

# THE CULVER CITIZEN

ON LAKE MAXINKUCKEE • INDIANA'S MOST BEAUTIFUL LAKE

69TH YEAR, NO. 20

CULVER, INDIANA, WEDNESDAY, MAY 15, 1963

TEN CENTS

## Contestants In The Queen Contest



CHERYL DILLON

Culver



MARTHA McALLISTER

Culver



PATRICIA KLINE

Culver



JOHANNA HUGHES

Culver Military Academy

Pictured above are four of the young ladies, who are contestants in the Jaycee Queen Contest. They, with the other six, whose pictures have appeared in two previous issues of The Citizen, make up the ten entries. One of these ten young ladies will be chosen Queen, by votes cast for her, prior to the Jaycee Ball, June 15.

Of the ten girls entered, seven attend the Culver High School, one attends the Culver Military Academy, one is a resident of Monterey, and one resides near Leiters Ford.

The honor of being the Jaycee Queen of the Ball, will go to the young lady who receives the most votes. The girls receive four votes for every dollar they take in by donation or tickets for the

ball. The standings of the young ladies can be seen in Kline's Appliance Store windows. Dolls, with each girl's name attached, resembling the contestant, are walking up the ramp. The doll nearest the top of the ramp is ahead with other dolls behind the first one according to their standing. The color TV to be given away is also displayed.

The Queen Contest standings as of Tuesday morning are as follows: Charlene Lucas, 1st; Pamela Phelps, 2nd; Martha McAllister, 3rd; Patricia Kline, 4th; Johanna Hughes, 5th; Carmen Grotter, 6th; Phyllis Shaffer, 7th; Cheryl Dillon, 8th. Judy Kimmel and Diana Brettmann have not as yet turned in their votes.

## Baccalaureate On May 19 For 42 1963 CHS Seniors

Baccalaureate services will be held at 8 p.m. Sunday, May 19, in the Community Building for 42 members of the 1963 graduating class of Culver High School.

Rev. Warren Sorenson, pastor of the Burr Oak Church of God, will be the speaker, using as his theme, "Facing Light."

Rev. Walter S. Chisholm, pastor of the Culver E.U.B. Church, and Rev. Harold W. Hohman, pastor of Culver's Grace United Church, will assist in the service.

Special music will be provided by the High School Girls' Chorus, under the direction of Richard Hambrook. Paul White will serve as organist.

The sixty-third annual commencement exercises will be held in the Community Building at 8 p.m. Friday, May 24.

Mr. and Mrs. Clarence Kline were in Rochester Monday afternoon where they attended the funeral of Mrs. Ray Woodcox, mother of Mrs. Guy Kline of California.

## Next Year's First Graders To Attend School On May 22

The Culver Elementary School will be holding an orientation day for next year's first graders from North Bend Township as well as for children from Union Township who did not attend kindergarten this year.

The children may be at the school all day on May 22 or for the forenoon or afternoon session. The group will meet in the kindergarten room and will be under the direction of Mrs. Lulu Melton and Shelton Kaiser, the elementary principal. Since this day's activities will give new pupils an opportunity to get acquainted with the school facilities and program, school officials urge parents to have their children present for at least part of the day. Mr. Kaiser has pointed out that this day's program also will give him a more definite idea regarding the number of first graders to expect in September.

Children who are to be eligible for first grade in the fall must be six years of age before the end of September, 1963. Those who are to enter kindergarten must be five years of age before September first. The pupil's age must be verified by a birth certificate.

## Two Civic Groups Meet With Culver School Board

In its meeting on Tuesday evening, May 14, the Board of School Trustees of Culver Community Schools conferred with representatives of two Culver civic groups regarding certain school policies.

Wilber Taylor, William Taber, and Andrew Venum, representing Culver business men and the Culver Chamber of Commerce, reviewed the objections of merchants to the sale by the school of many items which could be purchased at local stores. They indicated that the sale of such articles at the school has led to a decrease in the sales in local business establishments. They expressed the feeling that the school should not sell in competition with retailers who are local taxpayers. The School Board indicated that a careful study would be made to determine the extent to which such a situation could be corrected.

Mrs. Earl Dean Overmyer and Mrs. Donald Davis, representing the Culver City Club, presented an appeal for continuation of Senior trips after unification of the high schools of the school corporation. They expressed the feeling of their organization that the values of such trips were worth the money which is raised by pupil projects and that the community would be willing to have the trips continue.

Following the review of the problems and values of such trips, the School Board voted favorably on a motion to continue the trips on a trial basis after unification of the high schools in the fall of 1964. The board members stipulated that the trips would have to be held during the week of spring vacation and that the trips ought to be shortened somewhat to cut down on the cost per pupil in order to minimize the financial burden of such projects.

In further business, the School Board reviewed the teacher situation and considered the problem of filling certain vacancies. Openings still exist in the Commerce, Music, Industrial Arts, Library, Elementary, and General Science areas at either Aubbeenaubee or Culver. Superintendent McLane indicated that two or three candidates are to be interviewed during the week and that some of the vacancies may be filled before the close of the term. The School Board decided to

## Park 'N Shop To Open New Store This Week

### Culver Clothiers Robbed Of Nearly \$7,000 In Clothing

### Search For Well-Dressed Yeggs

Articles of clothing valued between \$6,000 and \$7,000 were taken in a burglary of the Culver Clothiers, Inc., on South Main Street late Saturday night or early Sunday morning. It is thought the time might have been between 12 and 12:30 a.m.

Approximately 70 suits, 50 to 60 pair of shoes, jewelry, nylon shirts, sweaters and \$42 in cash were reported missing after the theft was discovered about 10:30 a.m. Sunday by William Taber, who noticed the front door of the store swinging open.

The front door of the store was pried open to gain entry after the burglars had made an unsuccessful attempt to get in by removing a storm window from a rear window, which was bolted shut. The back door showed signs of attempted entrance.

The burglars left by the back door, leaving a suit on the floor near the rear door. A coat hanger had caught on to a spool of sewing thread, which unwound as they carried the merchandise across the yard to Madison Street, where it is assumed a vehicle was waiting. The iron bar used to jimmy the doors was left behind on Mr. Haig's work table.

Robert L. Haig, William M. Rasmussen and Andrew Venum are the owners of the store.

Investigating the Culver theft are Sheriff Greenlee, Culver Police Chief Don Mikesell and State Detective Robert Wilson.

### PAPER DRIVE TO BE HELD SATURDAY, MAY 25 BY LOCAL BOY SCOUTS

Culver Boy Scout Troop 290 will conduct a paper and rag drive on Saturday, May 25. Proceeds from this drive will be used to purchase needed equipment and to support various activities of the local Troop.

The drive will start at 8:30 a.m. and will cover the town of Culver, East, West, and South Shore Drives, and the Academy homes. Rural folks wishing to contribute to the drive may drop their bundles of papers and rags at The State Exchange Bank parking lot.

The public is reminded to please place their bundles on the street curb by 8:30 a.m. Saturday, May 25.

### CULVER MEMORIAL DAY OBSERVANCE PLANNED

The annual observance of Memorial Day in the Culver area will feature a ceremony honoring our local war dead and a parade which will march, following the ceremony, from the Culver Public Library to the Culver Cemetery.

The bands of the Culver Consolidated Schools will participate and Rev. Dr. Ronald C. Williams, pastor of the Culver Methodist Church, will be the speaker.

Units of the Veterans of Foreign Wars and the American Legion, and all others participating will assemble in front of the Library at 10 a.m., May 30.

More details will be listed in next week's issue of The Citizen.

### FIRE DEPARTMENT calls should be made to Viking 2-2121.

re-visit the two schools on its meeting date next week in order to determine the nature of certain repairs that should be made during the summer period.

Mr. Charles Rhodes, owner of the Park 'N Shop Supermarket, announces that the initial opening of the new Culver Park 'N Shop will be Thursday, Friday, and Saturday of this week. The store is located on East Jefferson Street in the downtown section of Culver.

The new store will be under the management of James McCombs. Albert Schlabach will manage the produce department and the meat department will be under the management of Harley Evans.

At a Wednesday evening reception, prior to the Thursday opening, several business and professional people of Culver will inspect the new Park 'N Shop Supermarket.

This week's issue of The Citizen and The Crier carries a four-page advertisement in which Mr. Rhodes formally announces the opening of this attractive Culver shopping facility.

## Funeral Services Held Monday For Ann Aylsworth

Mrs. Ann Louise Aylsworth, 411 N. Main St., Culver, died at 1:30 p.m. on Saturday, May 11, at Parkview Hospital in Plymouth following an illness of one year.

Mrs. Aylsworth was born in Redkey, Ind., the daughter of Arthur and Sarah Mahan, and grew up in Muncie. Her husband, Cleve Aylsworth, preceded her in death and Mrs. Aylsworth has made her home in Culver with her sister, Miss Mary Francis Mahan, for the past 16 years.

Survivors, in addition to Miss Mahan, are a son, Robert C. Aylsworth of Cleveland, Ohio; a daughter, Mrs. Eloise Long of Detroit, Mich.; and five grandchildren. Two brothers preceded her in death.

Services were held at 10:30 a.m. Monday at the Van Gilder Funeral Home, 104 Lake Shore Drive, Culver, with Dr. Ronald C. Williams, pastor of the Culver Methodist Church, officiating. Burial was in the Beech Grove Cemetery at Muncie, Ind.

## After-Prom Party Sponsored By Culver Lions Club

The Culver Lions Club will sponsor an After-Prom party at the Plymouth Country Club for the Juniors and Seniors of Culver High School, following their prom activities Friday night, May 17. The After-Prom Party will start at 12:30 a.m., Saturday morning, May 18, and will be concluded at 4:00 a.m. with a breakfast at the Country Club.

Music for the party will be furnished by the Bob McFarland Combo. Other entertainment will be presented during inter-mission about 2:30 a.m.

The event will be completely chaperoned by members of the Lions Club and their guests. Lions Club committee consists of James McAllister, Don Davis, Harold Fitterling, Walter Thompson and others.

## Culver Lions To Hold Fish Fry

Culver Lions Club will sponsor a Fish Fry, Friday, May 31 at the Culver Town Park. Serving will be from 5:30 p.m. to 8 p.m. In case of rain, serving will be at the Lions Den. The food will be prepared by the Men's Class of the Monterey Methodist Church.

Typewriter ribbons and adding machine tape at The Citizen



## C.M.A. Faculty Wives Publish Cook Book



### Cook Book

The Culver Cook Book, sponsored by the Mothers' Club and the Faculty Wives Association of Culver Military Academy, went on sale Mothers' Weekend at the Academy and is now available to the public.

Cook books can be purchased at The Culver Inn or the Quartermaster Store at the Academy. Purchase price is \$3.00. Books may also be obtained for mailing by contacting Mrs. Patrick Hodgkin or Box 121 at the Academy. A mailing charge of 25 cents includes postage and packaging.

Publication of the Cook Book culminates a year of work and is a compilation of 200 recipes submitted by alumni and faculty wives and mothers of present and former cadets.

The idea for the book was conceived by Mrs. Delmar T. Spivey, wife of the superintendent. Although emphasis was placed on gourmet recipes, less fancy recipes also appear.

The profits from the book will go to Culver's Program for Excellence and will be put into endowed funds for scholarships and faculty salaries.

The recipes are divided into categories of Appetizers and Sandwiches, Breads, Cakes and Cookies, Casseroles, Desserts, Meats and Fish and Fowl, Pies and Salads.

The Cook Book is plastic bound and has a three-color stain resistant cover with the Culver seal on it. The cover was designed by Mrs. Warner Williams. The book was printed by The Culver Press, Inc.

Mrs. Spivey served as honorary chairman. Mrs. Williams, Mrs. Hodgkin, Mrs. William Covington, Mrs. James Bishop, Mrs. John Edgeell, Mrs. Robert Matson, Mrs. Thomas Walker, Mrs. Norman Wagner and Mrs. Kermit Zieg assisted her.

You can place a Card of Thanks in The Citizen for only \$1.25.



FRIDAY, MAY 17  
Francis McFarland  
Trula McKee  
Sue Ellen Sedlacek  
SATURDAY, MAY 18  
Glenn Doll  
Lance Overmyer  
Sharon Ann Sedlacek  
Kathryn Lynn Tasch  
Martin Easterday  
SUNDAY, MAY 19  
Jimmy Downs  
Clyde Hickman  
John Newman  
Deborah Bean  
Jake Johnson  
Neal Shock  
Nancy (Prosser) Guess  
Douglas Hartz  
WEDNESDAY, MAY 22  
Melvin E. Thomas  
Everett Wilson  
THURSDAY, MAY 23  
Stephen and Penney Downs

### Women's Bowling

Team Standings:	W	L
Snyder Motors	45	19
Marshall County Lbr.	42	22
Miller's Dairy	41	23
Trone's	40	24
Chesty's Mink	39	25
Poppe's Appliance	33	31
Wicker Ford	32 1/2	31 1/2
Kline's T.V.	31	33
Parkview Trailer	28	36
M. & M. Restaurant	21	43
State Exchange Bank	16	48
V.F.W. Auxiliary	15 1/2	48 1/2
High game scratch:	Elsie Engle	200.

Culver Women's Bowling Banquet at  
The Culver Inn  
May 23rd

- \* Dinner — 6:30
- \* Presentation of awards
- \* Election of officers

### Soil Stewardship Week May 19-26

Soil Stewardship Week, a nation-wide observance which places emphasis on man's obligations to God as stewards of the soil, water and other related resources, will be celebrated locally May 19-26, according to Harold Warner, chairman, Marshall County Soil and Water Conservation District.

The Marshall County Conservation District will distribute, upon request to churches of all faiths, programs, bulletin inserts, posters, and booklets created particularly for this year's observance. The materials were prepared by the National Association of Soil and Water Conservation Districts, in cooperation with a Soil Stewardship Advisory Committee composed of leading churchmen in the nation.

Typewriter ribbons and adding machine tape at The Citizen.

## "Dell" Wells, Former Resident, Dies At Age 95

Colonel Ellsworth ("Dell") Wells, 95, died Sunday morning, May 12, at the home of his daughter, Mrs. Helen Timmons, in Riverside, Calif.

Mr. Wells was born in Rhode Island May 5, 1868, and came to Indiana as a child, living most of his life in the Culver area. He went to California 16 years ago.

Married Jan. 1, 1893, to Nora E. Davis of Culver who passed away June 6, 1958, he was employed as a yard man at Culver Military Academy for many years and attended the E.U.B. Church in Culver.

Surviving with Mrs. Timmons are another daughter, Mrs. Dessie Cook of Fort Wayne; six grandchildren; 10 great-grandchildren, and many cousins in the Culver community.

Services are being held this afternoon at the Graham Funeral Home in Riverside with interment there.

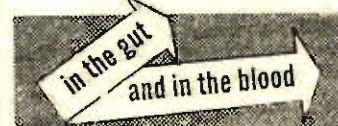
### Air Force Base To Hold Open House

Bunker Hill Air Force Base, Peru, Ind. will hold its annual Armed Forces Day Open House Saturday, May 18, from 10:30 a.m. to 3:00 p.m. (Est.). Gates will be open to the public during these hours.

## HALF SAVED IS DEAD WRONG



### FIGHTS DISEASE BOTH WAYS (NOT JUST ONE)



AVAILABLE AT:

**Buckeye Feed  
& Supply**  
MONTEREY

As Advertised in  
Farm and Home Section

## Organizations To Sell Poppies



When you are asked to purchase a poppy on May 24 or 25 remember the original conception of "Poppy Day" has changed.

When poppies were first offered, it was solely "TO COMMEMORATE OUR WAR DEAD." Today, the annual poppy campaign honors our veterans of all wars Living and Dead.

Today, with so many veterans, of such varied ages, the annual poppy program is vital in raising money to care for all needy veterans and their families and, when you consider that 56% of the population in the United States are veterans' children — you realize how big the job is to obtain the needed funds.

Therefore, the slogan today is far more encompassing — "REMEMBER THE DEAD BY HELPING THE LIVING."

## Florence Boys, Noted Plymouth Resident, Dies

Mrs. Florence Riddick Boys, wife of the publisher of the Plymouth Pilot-News, died Friday night, May 10, in her home.

Mrs. Boys, 89, of 110 W. Ewing Ave., was long active in Republican politics in Marshall County and once served on the GOP National Committee.

Mrs. Boys was a former state probation officer and served as president of the Pilot-News. Surviving are her husband, Samuel E. Boys, and four daughters.

Services were held at 2 p.m. Tuesday, May 14, in the First Methodist Church with the Rev.

Vernon Lallement, pastor, officiating. Burial was made in the memorial addition of Oakhill Cemetery. Van Gilder Funeral Home, Plymouth, was in charge of arrangements.

## MUTUAL OF OMAHA

Hospital - Health & Accident

Special Representative  
Life

**WILBER "Bob" TAYLOR**  
Culver - VI 2-2929

39eow

## ASSOCIATE BSC DEGREE



## INTERNATIONAL COLLEGE

Phone 742-1354

Fort Wayne, Ind.

Summer Term June 10

- \* Business Administration & Finance
- \* Secretarial Science
- \* Professional Accounting

With  
**I.B.M.**

15, 17, 20n

## HALF SAVED IS DEAD WRONG



### FIGHTS DISEASE BOTH WAYS (NOT JUST ONE)



AVAILABLE AT:

**Stockman  
Feed Mill**  
ARGOS

As Advertised in  
Farm and Home Section

## Order Your Fertilizer and Seed NOW

### FOR SPRING PLANTINGS —

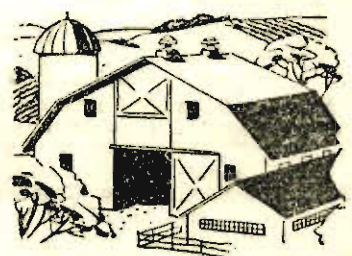


## YOUR FARM BUREAU CO-OP

PLYMOUTH, TIPPECANOE, AND CULVER

20n

it's good business to  
**SAVE HERE**



## Is There A Farm In Your Future?

There can be — if you plan for it now! Your regular savings, plus our liberal dividends will help you reach your goal.

**CURRENT RATE 3 1/2 %**

## Marshall County Building & Loan — Association —

201 N. MICHIGAN ST.

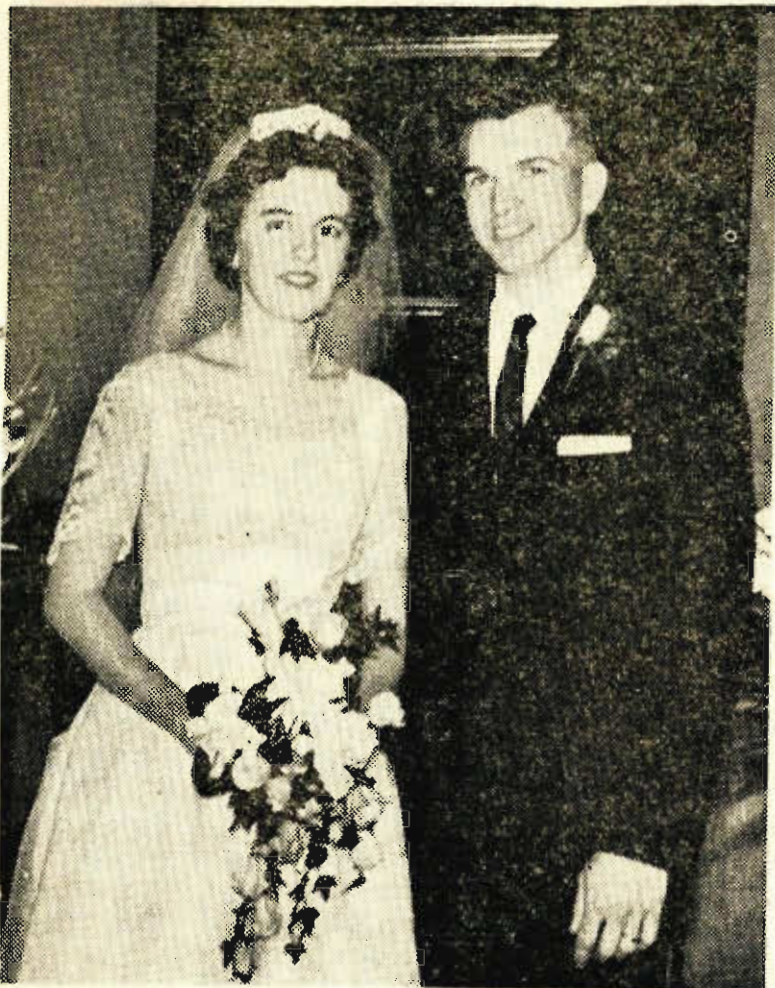
PLYMOUTH

D. L. McKESSON, Secretary

20n



Joyce Ann Drapalik Becomes Bride Of  
Max A. Gibbons In Church Ceremony



MR. AND MRS. MAX A. GIBBONS  
Photo By Tom Ross

Miss Joyce Ann Drapalik, daughter of Mr. and Mrs. Edward J. Drapalik of Argos, became the bride of Max. A. Gibbons in a nuptial service Sunday afternoon, May 5, at 3 o'clock in the Argos Methodist Church. The bridegroom is the son of Mr. and Mrs. Everett Gibbons of Route 1, Culver.

The Rev. Arthur A. Schenck, pastor of the Methodist Church officiated at the double ring ceremony before an altar flanked with twin candelabra, palms and arrangements of white gladioli. White satin bows with white and yellow mums and ivy marked the guest pews along the white carpeted bridal aisle. Miss Harriet Bonine of Rochester, organist, played several classical selections before the ceremony and accompanied Miss Judy Dickenson, vocalist.

The bride was escorted to the altar by her father who gave her in marriage. For her wedding the bride chose a gown of silk organza and hand-clipped Chantilly lace. The molded lace bodice was fashioned with a sabrina neckline touched with sequins, and short scalloped sleeves. A panel

of lace accented the front of the controlled bell skirt which was styled in back with a shaped pepulum of organza trimmed with a lace bow, and a full bustle that fell into a chapel train. A crown of seed pearls and sequins held the bride's bouffant elbow-length veil of French silk illusion. She carried a cascade bouquet of white gardenias, white roses and ivy.

Miss Jane Ellen Drapalik, sister of the bride, was maid of honor. She wore a gown of yellow organza over taffeta. The dress was made with a contoured neckline, short sleeves, and a short bell skirt accented in front with a small matching bow. Dresses in similar fashion were worn by the bridesmaids, Miss Elsa Foltz, cousin of the bride, from Indianapolis, and Mrs. Royce Hartsough of South Bend. Each of the bride's attendants wore crowns trimmed in seed pearls with short veils of silk illusion. They carried identical cascades of white mums and ivy.

Merle Gibbons of Plymouth was best man for his brother and Danny Savage and Brent Gocheour were the groomsmen. The

guests were ushered to their seats by Darrell McGriff and John Drapalik, brother of the bride, from Brownsburg.

The bride's mother wore a tan and gold color silk organza over taffeta sheath dress with beige accessories. The mother of the bridegroom wore a beige silk linen sheath dress with a beige flowered hat and accessories. The mothers' corsages were of white gardenias and yellow tea roses.

A reception was held in the social rooms of the church immediately following the ceremony for 200 guests. Serving at the bridal table were Mrs. L. O. Welker, Van Wert, Ohio, Mrs. Howard Rentschler, Fulton, and Mrs. Merle Eley of Argos.

The bride graduated from the Argos Community School and for the past three years has been employed at The State Exchange Bank in Culver. The bridegroom was graduated from the Culver High School and is employed at Ritz-Craft in Argos.

After a trip through Southern Canada the couple will be at home on Nutmeg Road, Route 3, Argos.

§-§-§  
Mrs. George Ogden Is  
Hostess To May 20  
Tri Kappa Meeting

The regular monthly meeting of Tri Kappa Sorority will meet Monday evening, May 20, at 8 o'clock in the home of Mrs. George Ogden, East Shore Road.

Assisting hostesses will be Mrs. J. Dick Newman and Mrs. Robert Rust.

§-§-§  
Every minute of anger is 60 seconds of lost happiness.

since *beginning*

Integrity has been the watchword of our business, and our faithful, conscientious devotion to service has built us a reputation for ability and dependability that is our most valuable asset.

**Van GILDER**  
Funeral Home

Phone VI. 2-2020 CULVER, IND.

## QUALITY GROCERS

Fine Groceries and Meats  
At Low Prices

109 S. MAIN ST.  
CULVER

LOCKER PLANT  
PHONE VI 2-2071

**POTATOES** Idaho ..... 10-lb. bag **59¢**

Marlene

**Margarine**

**3 lbs. 49¢**

Chase & Sanborn

**Drip or Reg. COFFEE** ..... lb. **59¢**

Campbell's

**TOMATO SOUP** ..... can **10¢**

Family Pack

**Scott NAPKINS** ..... pkg. of 60 **10¢**

**VELVEETA CHEESE** ..... 2-lb. box **75¢**

Borden's

**Biscuits**

**3 pkgs. 25¢**

Del Monte Cream Style

**Corn**

303 can

**2 cans 29¢**

Pepperidge Farm

**Apple Dumplings  
Strawberry  
Turnovers**

**pkg. 59¢**

We Take Orders For Fingerhut Bakery Goods

**STEAKS — STEAK SALE — STEAKS**

**T-BONE STEAK** Choice Grade ..... lb. **89¢**

**Round Steak** lb. **79¢** | **Rib Steak** lb. **69¢**

**SIRLOIN STEAK** Choice Grade ..... lb. **85¢**

**BOILED HAM** Oscar Mayer Sliced or Chunk ..... lb. **79¢**

**BOLOGNA** or Liver Sausage Oscar Mayer All Meat ..... lb. **39¢**

**SLICED BACON** Stark & Wetzel No. 1 - Packaged ..... lb. **45¢**

Also Fresh Dressed Fryers

**ANNOUNCE OPENING**

of the

**FROSTY CREME**

**Saturday, May 18**

**12 Noon to 11:30 P.M.**

**Open 7 Days A Week**

20\*

**HINKLE'S IDEAL CLEANERS**

108 East Washington St., Culver

ALL GARMENTS CLEANED BY US DURING THE  
MONTH OF MAY WILL BE MOTH-PROOFED  
FREE OF CHARGE!

HATS CLEANED AND BLOCKED  
FUR COATS CLEANED AND GLAZED

GIVE US A TRY!

20n



# CULVER CALENDAR FOR THE WEEK

**Wednesday, May 15—**  
 7:30 p.m.—Crescent Class meeting in Grace Church Social Rooms.  
**Monday, May 20—**  
 7:00 p.m.—Boy Scouts will meet at the Methodist Church.  
 8:00 p.m.—Tri Kappa will meet in the home of Mrs. George Ogden, East Shore Road.  
 8:00 p.m.—V.F.W. Ladies Auxiliary meeting at Post home, Installation of officers.  
**Tuesday, May 21—**  
 7:30 p.m.—Stated meeting of Order of Eastern Star in Masonic Hall.

## Piano Recital To Be Presented Monday, May 20

Piano pupils of Mrs. Esther Whan will present a public recital at 7:30 p.m. on Monday, May 20, at the State Exchange Bank Auditorium.

Students participating in the recital will be Jim Stevens, Michael Stevens, David Martin, Eric Hughes, Christine Stevens, Carol Kline, Renee Schultz, Marsha Estey, Ruth Benner, Jeanne Adams, Pat Ogden, and Janet Branaman.

## W.S.C.S. Officers To Be Installed Sunday Morning

The Woman's Society of Christian Service of the Methodist Church met Thursday evening in Fellowship Hall. Mrs. Donald Parson, president opened the meeting and conducted the business.

It was announced that the rummage sale will open on Wednesday, May 15, and Mrs. Earl Foreman will be in charge of the sale each Wednesday during the summer. It was also announced that Mrs. A. E. Adams, president-elect, and the other newly elected officers of the W.S.C.S. will be installed at the morning service at the church Sunday, May 19.

After the business, Mrs. Loyde Moore gave the devotionals using

as her theme, "An Appointment With The Lord." Mrs. Ralph Osborn, Jr., program chairman, introduced Mrs. Frank Bryant who reviewed the book, "These Ruins Are Inhabited," by Muriel Beadle.

During the social time following the program Mrs. Lyman Morris was chairman of the hostess committee. Mrs. Parson and Mrs. Adams presided at the tea table which was centered with an arrangement of bridal wreath and purple lilacs.

## Senior Livewires Meet In Behmer Home

The fourth meeting of the Senior Livewires was held Monday evening at the home of John and Linda Behmer.

The pledges to the flags were given by Andrea Siple and Patty Overmyer. All members were present. New business included the discussion of money making projects and it was decided on a float and a carwash.

The Health and Safety lesson on home accidents was given by Steve Ulery. Wayne Neidlinger was in charge of recreation.

Five new members were initiated and refreshments were served by Linda Behmer and Jerry Nelson.

The next meeting will be May 27 at 8 p.m. at the home of Hershel and Joyce Odle.

You can place a Card of Thanks in The Citizen for only \$1.25.

## Bridge Winners At Culver Inn Duplicate Club

The Culver Inn Duplicate Club is proud to announce the following winners on May 8 which was Master Point Day:

**North-South —** First prize, Paul G. Kraut and Jack Saadi of Logansport; second prize, Mrs. Hill Leavitt and Mrs. Sam Helvie of Logansport; and third prize, R. H. Shanks and H. W. Walmer of Culver.

**East-West —** First prize, Mrs. Don O'Neill and Mrs. Burnell Combs of Logansport; second prize, Mrs. Florence Viney and Mrs. Jack Saadi of Logansport; and third prize, Mrs. Gilbert Brown and Mrs. John Beety of Logansport.

**FIRE DEPARTMENT** calls should be made to Viking 2-2121.

**Mrs. Walker Winslow Hostess To Indianapolis Bible Group**  
 The Adult Round Table Bible Class of the Second Presbyterian Church, 77th & Meridian St., Indianapolis, will attend services at Culver Military Academy on Sunday, May 19.  
 Following a luncheon at The Culver Inn, a discussion will be held in the home of Mrs. Walker W. Winslow, hostess.

Your dreams come true with **PLAID STAMPS**



## A&P's GIANT 10¢ SALE!

### OUR FINEST—GRADE A CORN

# 10¢

**GOLDEN WHOLE KERNEL**  
 Who ever said you can't enjoy good quality and have savings, too, hasn't shopped at A&P. There's a taste-enticing variety to choose from at low, low prices that are sure good to your budget.

1-lb. 10¢  
 1-oz. can 10¢

<b>Root Beer</b>	Strawberry, Gingerale or your favorite flavor—Hill's or Yukon Club	24-oz. btl.	10¢
<b>Dole Pineapple Juice</b>		12-oz. can	10¢
<b>Mashed Potatoes</b>	Blue Label Instant	3 1/2-oz. can	10¢
<b>Frozen Cut Corn</b>	Tru Pack Brand	10-oz. pkg.	10¢
<b>French Fries</b>	Frozen—Reg. or Crinkle Cut West Pak Brand	9-oz. pkg.	10¢
<b>Libby's Fruit Drink</b>	Frozen Your choice of 4 Flavors	6-oz. can	10¢
<b>Red or Kidney Beans</b>		16-oz. tin	10¢
<b>Short Grain Rice</b>	River Brand	10-oz. pkg.	10¢
<b>Vegetable Soup</b>	American Beauty Brand	10-oz. can	10¢
<b>Prune Juice</b>	Lake Shore	6-oz. can	10¢
<b>Del Monte PINEAPPLE-Grapefruit Drink</b>		12-oz. tin	10¢
<b>Baby Lima Beans</b>		16-oz. tin	10¢
<b>Pik-Nik Potatoes</b>		1 3/4-oz. can	10¢
<b>Stuffed Olives</b>	Seville Brand	jar	10¢

Super Right

## Skinless Franks

lb. 45¢

14-oz. btl.

## Ann Page Ketchup

6 btl. 89¢

Angel Soft—Absorbent

## Facial Tissues

WHITE

pkg. of 200

# 10¢

## AMERICAN BEAUTY BRAND VEGETABLES

SLICED CARROTS - 15 1/2 OZ.  
 GREEN & WHITE LIMA BEANS - 15 1/2 OZ.  
 MIXED VEGETABLES - 15 1/2 OZ.  
 TOMATO JUICE - 14 OZ.  
 SPAGHETTI - 15 1/2 OZ.  
 NAVY OR NORTHERN BEANS - 15 1/2 OZ.

each 10¢

## Golden Ripe Bananas

lb. 10¢

## Large Green Cucumbers

each 5¢

Special Low Price—Save 10¢

## Potato Chips

Reg. 65c  
 Jane Parker  
 Twin Pack

# 55¢

SAVE CASH AND PLAID STAMPS, TOO!

AMERICA'S FOREMOST FOOD RETAILER... SINCE 1859



## BUTTER

Sunnyfield—93 SCORE

1-lb. pkg. 65¢

# NOBODY CARES FOR YOUR FORD

LIKE WE DO!



We work on Fords every day . . . we know them inside out. And not only can we service your Ford best . . . we care more about doing it! Ford owners are our most important customers. We want to take care of your present Ford today, your future Fords tomorrow. Let our Ford know-how and care-how save you time, money and worry . . . bring your Ford home for service.



## RAY WICKER FORD SALES

Culver

Phone VI 2-2791



The Hibbard Evangelical United Brethren Ladies Aid held their regular meeting in the church social rooms, Thursday evening, May 9, at 8 o'clock. Members of the families were guests, in observance of family night.

Mrs. Irvin Overmyer, president, opened the meeting with an appropriate thought for the theme "Love in the Home," after which devotions were given under the direction of Mrs. Alfred Large assisted by Mrs. Vance Albert. A poem was read by Mrs. Albert followed by the hymn "The Church in the Wildwood" sung by the group. The topic, "Love is a Household Word" was then presented, during which Mrs. Albert read the poem "Beatitudes for Women."

A missionary offering was then taken and the devotions were closed with a prayer by Mrs. Albert.

Mrs. Overmyer welcomed the guests and roll call was answered by remarks of "what the month of May means to me."

During the business session it was decided to hold an ice-cream social on the evening of June 29, the project being in charge of Mrs. Harry Leffert and Mrs. Raymond Lowry. The meeting closed with a poem "In Flanders Field" by Mrs. Overmyer. Refreshments were served by Mrs. Harry Leffert and Mrs. James Jones.

Entertains S.K. Club

Mrs. Earl Eckman entertained in her home Friday evening for the members of the S.K. Bridge Club and a guest, Miss Cecelere Brown. A dessert course was served preceding the games and prizes were won by Mrs. A. Adams, Mrs. Charles Ferrier, and Mrs. Russell Burns.

## Gayble Theatre

NORTH JUDSON

Tonight's The Night To Go Out To A Movie!

WED., THURS., FRI., SAT.,

MAY 15, 16, 17, 18

Matinee Saturday at 2:30 Cont.

In Technicolor and with Stereophonic Sound

"Ben Hur"

with Charlton Heston

At Regular Prices!

Adults, 75c; Children, 30c

SUN., MON., TUES.,

MAY 19, 20, 21

Matinee Sunday at 1:30 Cont.



Glen Ford, Shirley Jones

—2nd Feature—

"Cairo"

with George Sanders

WED., THURS., FRI., SAT.,

MAY 22, 23, 24, 25

Matinee Saturday at 2:30 Cont.

3 Full Length Features!

"Motorcycle Gang"

—2nd Feature—

"Hot Rod Gang"

—3rd Feature—

"Road Racers"

The Culver Rebekahs held their regular meeting Tuesday evening, May 14, in the Lions Den.

Mildred Johnson of Leeters Ford, district deputy president of district 23, was present for inspection of the lodge. Mrs. Johnson, Mrs. Gertrude Reichard, left supporter to Mrs. Johnson, Ellen Poppe, district treasurer, and Alice Mikesell, Banner guard of Ladies Auxiliary, were all introduced and welcomed.

The Rebekah Degree was bestowed on Anita Newman during inspection. There were 17 members and three guests, all from Leeters Ford, present. Mrs. Johnson gave a short talk in connection with the inspection.

Refreshments were potluck.

§-§-§

It Pays To Advertise

The Misses Edna, Clara, and Osie Stahl returned to their Culver home last Wednesday after spending the winter in St. Petersburg, Fla.

They report that the winter was a pleasant one with the exception of two days and one night which brought the coldest weather of the century to this Florida area and inflicted heavy damage to the citrus fruits, ornamental shrubbery, and shade trees.

The Stahls enjoyed their trip home and spent the weekend in the Blue Ridge Mountains and also visited with Mrs. Claude Newman at the Methodist Memorial Home in Warren, Ind.

§-§-§

Demonstration Club Enjoys

"Come As You Are" Breakfast

Twenty-four members of the Culver Home Demonstration Club

## BRUNDIGE'S A-1 GARDENS

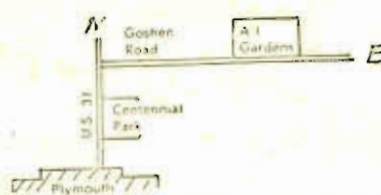
Vegetable — Flower Bedding — Sweet Potato and Pansies. Also Canna, Gladiolus and Dahlia Bulbs

All our plants are grown from available hybrid and certified seed planted in fumigated soil to give you healthy, well rooted plants.

First Road North Of Centennial Park,

PLYMOUTH

East 1/2 Mile On Goshen Road



20-2n

## TREAT THE FAMILY TO DINNER AT

The **CULVER** Inn

ON LAKE MAXINKUCKEE  
CULVER, INDIANA

Saturday, May 18

Buffet Supper Will Be Served In The Shack Because of the Monterey High School Dinner and Prom In Our Dining Room

Served 5:30 to 7:30 P.M. — \$2.45

Featuring:

SWISS STEAK A LA GEORGE  
CHICKEN A LA KING  
DEEP SEA SCALLOPS, TARTARE

Sunday, May 19

Buffet Dinner 12:00 to 2:00 — \$2.85

Featuring:

ROAST LOIN OF YOUNG PORK  
SEAFOOD NEWBURG  
BEEF RAGOUT

Family Supper 5:30 to 7:30 — \$1.50

If you play Contract Bridge, you will enjoy Duplicate. Play Duplicate Bridge with the Culver Inn Duplicate Club every Wednesday, 10:00 A.M. to 2:00 P.M. For information, call us.

THE CULVER INN

Viking 2-3331

20n

and two guests, Mrs. Harold Hohman and Mrs. Carol Schmidlapp, Marshall County Extension Agent, enjoyed a, "Come As You Are," breakfast at the lake cottage of Mrs. D. Hatten Thursday morning.

Games and contests were enjoyed with prizes going to Mrs. Errol Culter, Mrs. Harry Sheppard, Mrs. Ferris Zechiel and Mrs. Bernard Miller. Mrs. D. Hatten won the door prize.

Breakfast was served by the



Open 6:50 P.M. Week Nights

Closed Wed. and Thurs.,  
May 15 and 16

FRI., SAT., MAY 17, 18

Connie Francis, Paula Prentiss

"Follow The Boys"

In Panavision - MetroColor

SUN., MON., TUES.,

MAY 19, 20, 21

"Lolita"

James Mason, Shelley Winters,  
Peter Sellers, Sue Lyon

For Persons Over  
18 Years of Age

Closed Wed. and Thurs.,  
May 22 and 23

officers, Mrs. Wilfred Craft, Mrs. Delbert Jordan, Mrs. George Kerrigan, and Mrs. William Easterday.

## REES

PLYMOUTH, IND.

THURS., FRI., SAT.

"Young Guns Of Texas"

In Deluxe Color

James Mitchum, Alana Ladd,

Jody McCrea

—And—

"Day Mars Invaded Earth"

Kent Taylor, William Mims,  
Marie Windsor

The excitement of the great outdoors—the thrills of outer space! An action double-feature.

SUN., MON., TUES., WED.

"Follow The Boys"

In CinemaScope & Color

Paula Prentiss, Connie Francis,  
Russ Tamblyn

The story of the gals who follow their gals from port to Riviera port!

Color Cartoon & News  
Sunday Continuous, 2 P.M.

## FREE ADMITTANCE

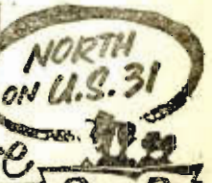
TO THE

BIG CINEMASCOPE SCREEN

**TRI-WAY**

drive-in theatre

CHILDREN FREE WIDE SCREEN PLAYGROUND



3 Miles North of Plymouth On U. S. 31

ALL NIGHT, WEDNESDAY, MAY 22

Continuous Showings So Long As Necessary

## FREE - FREE - FREE

500 SMALL BAGS POPCORN—500 PRETZEL STICKS  
500 SMALL ORANGE DRINKS  
20 PIZZAS AWARDED DURING EVENING

See The Displays Of 1963 Chevrolets  
presented by

Jim Labas Chevrolet, Inc., Plymouth

Come Early and Look Over These Fine Cars

## SOMEONE WILL WIN THESE PRIZES

A Dressmaker

**SEWING MACHINE**

courtesy of

MAIN

**SEWING CENTER**

Elkhart

FIVE

**\$3 SAVINGS ACCOUNTS**

courtesy of

**Marshall County TRUST & SAVINGS BANK**

Plymouth

FIVE

**\$5 BAGS OF GROCERIES**

courtesy of

**G & G SUPER**

Plymouth

Western Convertible

**BICYCLE**

courtesy of

**BUCHTEL'S HARDWARE**

Plymouth

GATES OPEN 7 P.M. - FIRST FEATURE 8:30

"CHARTROOSE CABOOSE"

with Molly Bee, Ben Cooper, Edgar Buchanan

SECOND FEATURE AT 10:15

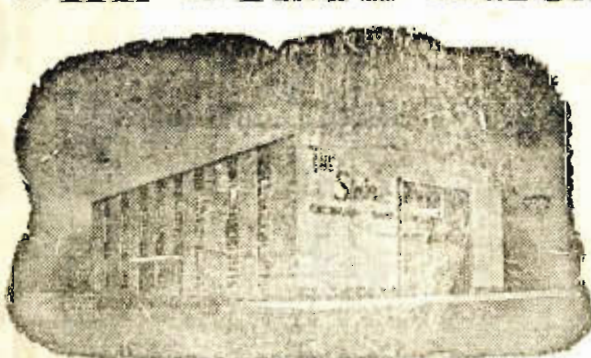
"THE WILD AND THE INNOCENT"

Audie Murphy, Joanne Dru, Gilbert Roland

3 BIG CARTOONS

ONE NIGHT ONLY - MAY 22

## THE STATE EXCHANGE BANK



Culver, Indiana

and

Argos, Indiana

DIRECTORS

W. O. Osborn

A. N. Butler

Hampton Boswell

O. C. Shilling

Glen Overmyer

W. L. Johnson

Carl M. Adams

George E. Eley

Margaret Swanson

MEMBER FEDERAL DEPOSIT INSURANCE CORPORATION



Mrs. James Burkett and Mrs. Eva Heiser visited with Mrs. Grace Malott at Knox Saturday afternoon. "The greatest of faults is to be conscious of none." — Eugene N. Marten, LaGrange (Ind.) Standard.

## CONGRATULATIONS

To The New  
**PARK 'N SHOP**

### BAUGHMAN ELECTRIC CO.

Residential — Commercial — Industrial

Phone 784-3551 LaPaz, Ind.

ELECTRICAL CONTRACTORS FOR THE

NEW PARK 'N SHOP BUILDING

20n

Hats off —  
to the new

**PARK  
'N  
SHOP**

**POPPE'S APPLIANCE**  
Culver

Best Wishes —

**PARK  
'N  
SHOP**

**DON STUBBS**  
Excavating

CULVER

Viking 2-3176

# CONGRATULATIONS TO **PARK 'N SHOP** FOR THEIR BEAUTIFUL NEW FOOD MARKET

They have selected the new Stran-Steel  
building with Stran-Satin color.

We are proud to have been a part of  
building a better Culver.

YOUR  BUILDING DEALER

### DAVID POOR COMPANY

Road 15 North - P. O. Box 797

**WARSAW, INDIANA**

Phones 267-8814 or 267-8931

CONGRATULATIONS TO THE  
NEW AND MODERN

**PARK  
'N  
SHOP**

**McCray Refrigeration and Equipment**  
Furnished By

**SOUTH BEND STORE FIXTURES CO.**

742 South Eddy St.

Phone AT 9-1161

**SOUTH BEND, INDIANA**



# NEW PARK 'N SHOP OPENS TOMORROW

## CELEBRATES WITH 3-DAY EVENT

**Special Prices On Thurs., Fri., Sat.**

### Park 'N Shop Opens New Store Tomorrow

Thursday, May 16, at 8:00 a.m. will mark the opening of the sparkling new Park 'N Shop Supermarket, at downtown East Jefferson Street, Culver, situated in a brand new Stran-Steel building of latest design, which is centrally located on an area that will afford parking space for over 100 cars. While many, many food values will be offered at the store opening, the formal grand opening is being planned for early September, with sensational values to mark this event.

The interior of the store will feature six wide aisles for convenient shopping. Many display spots are provided for the access of featured items. The large produce department will be self-service type, combined with bulk displays of seasonable items out of doors under the front entrance canopy. The meat department will be service type with some items packaged for customer convenience. Large departments for the display of housewares, soft goods, frozen foods, greeting cards, magazines, records, drugs, ice cream and children's toys are also included.

The decorating decor of the interior of the building is one of soft, pleasant colors. The east and west walls are a soft pink. The large window and plate glass doors take up much of the north wall space with the balance of the wall being done in a harmonizing soft pastel green. The dairy case and meat departments occupy the south wall, which boasts a very attractive wall papered valance above these departments. The ceiling is done in a very attractive off-white shade of acoustical tile with gold metal banding.

### Grocery Personnel Who Will Help With Your Shopping

Personnel, other than Mr. McCombs, Mr. Evans and Mr. Schlach, who will serve you at the new supermarket are: Denny Keener, grocery and meat clerk; Chris Hartle, Bonnie Workman, Alta Wynn and Faye Rhodes, checkers; and Arl Altman and Bruce Lindvall, grocery clerks.

The spacious floor is tiled in alternating white and soft pastel green splattered tile which makes for a very neat appearance.

On entering the new market through the automatic door, which opens by electric beam, in order to get the full benefit of the spacious displays offered, customers will turn to the left, and go to the far side of the building. Here will be displayed the soft drink items. Next to this department is the houseware department; as you walk to the back of the store, on your left is the large fresh vegetable and fruit department, which is under the management of Mr. Schlach. On the right will be found the beginning of the staple canned goods department.

As the customer reaches the end of this first aisle, he comes face to face with the large dairy case, which will contain a wide selection of cheese, milk and pre-packaged meats, all self-service and prominently displayed for easy selection.

To the right of the dairy department, the customer approaches the spacious meat department. This department has been planned as a self service type operation, but special cuts of meats will be gladly prepared by Mr. Evans and his assistants.

On leaving the meat department, one has the choice of moving up any of the six aisles, which are widely spaced for easy

### James McCombs Will Manage New Store



**JAMES MCCOMBS**

James McCombs will take over as store manager of the new Park 'N Shop Supermarket. He filled the same position at the old location, just west of the new supermarket.

He comes to Culver with several years' experience in the grocery business, having worked in all departments in the store. Mr. and Mrs. McCombs attend the Trinity Lutheran Church and are the parents of four children. The McCombs reside at 317 West Washington Street, Culver.

maneuvering. Items on these long "B" lines are grouped for easy selection.

The far west aisles, just to the right of the meat department, are being used to display the large frozen food department, which is self-service. On the right the shelves contain items of the bakery department. At the end of the bakery department will be found the ice cream counter. On the left will be found the drug, greeting card, and record section.

Having made the complete trip through the spacious aisles loaded with a wide selection of staples, foods, and special items, you will have the privilege of check-

### Meat Dept. Is Managed By Harley Evans



**HARLEY EVANS**

The spacious meat department of the new Park 'N Shop Supermarket will be under the management of Harley Evans. The meat department is equipped with the finest equipment and will carry choice meats, cut to suit your needs.

Mr. and Mrs. Evans attend St. Mary's of the Lake Church and reside at 321 W. Washington St., here in Culver.

ing out at one of the three check-out counters. The checking counters are of the latest design which are arranged to speed up check-outs to eliminate waiting. Carry-out service will also be available.

Every possible arrangement of food and other items has been arranged to make your shopping much easier. To the left of the checkout counters, Mr. McCombs, store manager, will have his office.

The building is lighted by ten strips of fluorescent lights, which are mounted in pairs. The building is also air-conditioned.

To the back of the trading area proper will be found a room

### Produce Dept. To Be Managed By A. Schlach



**ALBERT SCHLABACH**

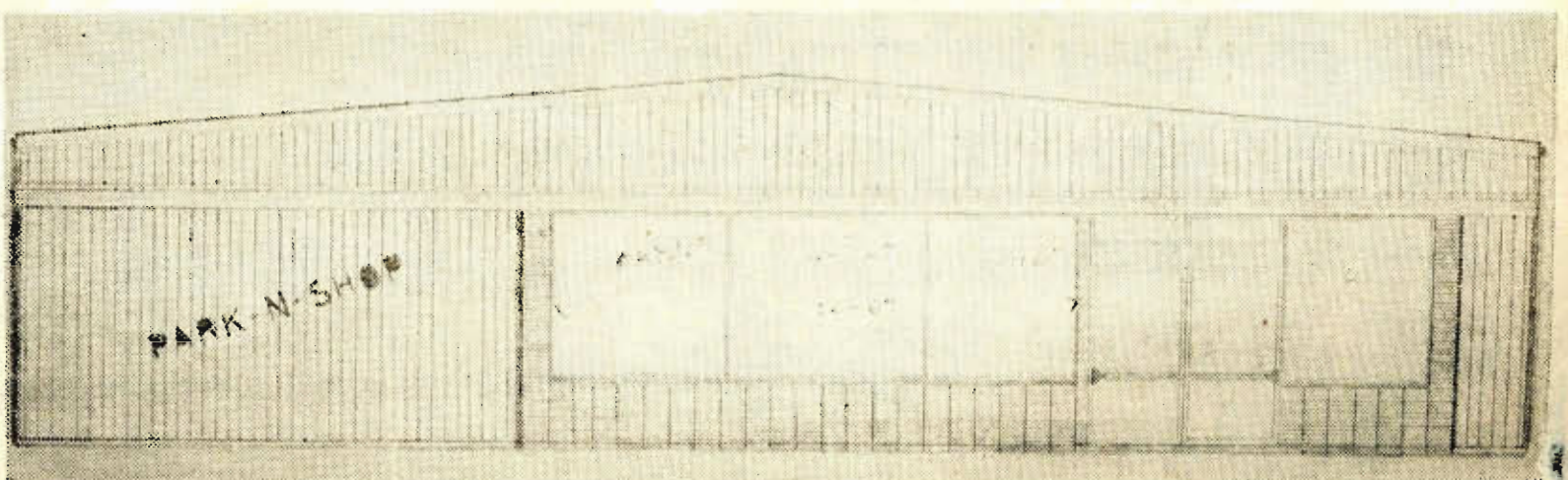
The produce department of the new Park 'N Shop Supermarket will be managed by Albert Schlach. A veteran of over 15 years in the fresh fruit and vegetable business, Mr. Schlach promises to offer the Park 'N Shop customers the finest in fresh produce.

Mr. and Mrs. Schlach are the parents of six children and reside at 312 Plymouth Street, Culver.

which will be used for pre-packaging produce, a produce cooler, and frozen food storage and a grocery storage area. Immediately behind this room, is another room which houses the air compressor which operates most of the equipment in the store. The meat department also has a large walk-in cooler.

The building affords over 6,000 feet of floor space. The parking lot outside the building can accommodate over 100 cars. Mr. Rhodes, owner of the Park 'N Shop Supermarket, has spared no expense to bring to Culver a food market that reflects the progress of the community.

## THE PARK 'N SHOP'S NEW STORE







Prices Good  
Thru Saturday

Quantity  
Rights  
Reserved

Free Parking  
For Over  
100 Cars

# STORE OPEN

**FREE DOOR PRIZES** — Be sure to register each and every time you visit Park 'n Shop on Thurs., Fri. and Sat. No purchase is necessary. Winners' names will be posted at Park 'n Shop during week of May 20 to 25.

- 1st PRIZE — BOY'S or GIRL'S BICYCLE
- 2nd PRIZE — BOY'S or GIRL'S BICYCLE
- 3rd PRIZE — MAN'S or LADY'S WRIST WATCH
- 4th PRIZE — MAN'S or LADY'S WRIST WATCH
- 5th PRIZE — STAINLESS STEEL TABLEWARE
- 6th PRIZE — BAR-B-Q SET
- 7th PRIZE — SKILLET SET

**FREE — One Loaf of Bread  
To The First 200  
Customers On  
Thursday Morning**

**PARK 'n SHOP**  
THIS COUPON IS WORTH  
15¢ TO YOU!!  
SAVE 15¢  
WHEN YOU BUY  
A 2 POUND CAN OF  
FOLGER'S COFFEE  
Clip this coupon, and  
present with your purchase  
of a 2 pound can of  
FOLGER'S COFFEE!  
Coupon each valued 1/20 of 1¢



**SPECIAL  
PRICE  
89¢**  
with coupon

**FOLGER'S  
Coffee**



**2**

Lb.  
Can

**89¢**

WITH COUPON AND \$5 ORDER

# BOAT LOAD SALE

- Red Label APRICOTS (2½ size)
- GRAPEFRUIT SECTIONS (303 size)
- Red Label PEACHES (2½ size)
- Raggedy Ann PINEAPPLE (No. 2 size)
- Red Label FRUIT COCKTAIL (2½ size)
- Red Label BARTLETT PEARS (2½ size)
- Packer's Label PRUNE PLUMS (2½ size)
- Red Label TOMATO JUICE ( 46-oz. size)
- Red Label TOMATOES (2½ size)

**4**

**For**

**\$1.00**

BOAT AND MOTOR FOR DISPLAY  
FURNISHED THROUGH COURTESY  
OF CULVER BOAT COMPANY



Every Day  
Low Prices  
To Help Your  
Food Budget

Automatic Doors  
For Your  
Shopping  
Pleasure

Wide Aisles  
For Your  
Shopping Ease

Opening Week  
Store Hours:  
8 A.M. to 9 P.M.

High Speed  
Checkouts For  
Your Shopping  
Convenience

# ING SALE

Thurs., Fri. & Sat.,  
May 16, 17 & 18

WHOLE WHITE ROCK

# FRYERS



LB.

# 19¢

**Stark & Wetzel**  
**Lunch Meat**  
3 8-oz. pkgs.  
**\$1.00**

**Oscar Mayer**  
**All Meat**  
**Wieners**  
**lb. 49c**

**Stark & Wetzel**  
**Sliced Bacon**  
**lb. 37c**

**Winesap**  
**Apples**  
**doz. 59c**

**Sweet Corn**  
**5 for 39c**

**Texas**  
**Yellow Onions**  
**3 lbs. 29c**

**Smoked Polish**  
**Sausage**  
**lb. 39c**

**Ward's**  
**ANGEL FOOD**  
**CAKES**

# 39¢

**Farm Crest**  
**Coconut Cream**  
**Pies**  
**each 39c**

**Borden's 1/2-Gal. Choc.**  
**Flavored Milk**  
**29c**

**Carrots**  
**Cello Bag**  
**10c**

**Home Made**  
**Ham Salad**  
**lb. 39c**

**Blue Ribbon**  
**Rib Steaks**  
**lb. 69c**

**Polish**  
**Sausage**  
**lb. 59c**

**Purina**  
**Dog Chow**  
25-lb. bag  
**\$2.59**

**Borden's**  
**Cottage Cheese**  
**2 lbs. 39c**

**Fresh, New**  
**Cabbage**  
**10c**

**Fryers**  
**NECKS & BACKS**  
**lb. 10c**

**Fryers**  
**LEGS & BREASTS**  
**lb. 39c**

**Sealtrest Eskima**  
**Rocket Bars**  
**doz. 39c**

**Birdseye**  
**Meat**  
**Pies**  
**5 for \$1.00**

**FLOWER and VEGETABLE**  
**PLANTS (Most Kinds)**  
**dozen 39c**

**Fresh**  
**Head**  
**Lettuce**  
**each 23c**

**Pascal**  
**Celery**  
**Per Stalk**  
**19c**

# FRYERS

**CUT UP**  
**PAN READY**  
**TRAY PACKED**

# 29¢

**County Line**  
**Cheese**  
**lb. 59c**

**Borden's**  
**Biscuits**  
**3 tubes 29c**

# BANANAS

**Golden**  
**Ripe**

LB.

# 10¢



# PARK 'N SHOP

## EVERYDAY

## LOW

**FREE  
BALLOONS  
FOR THE  
KIDDIES**

**FREE Yardsticks For  
The Men**

**FREE Coffee Measurers  
For The Ladies**

**FREE Carnations For The First  
100 Ladies On Friday and  
Saturday Mornings**

Red Label

**Margarine**

**2 lbs. 25c**

Sun Valley

**Applesauce**

**2 cans 23c**

Blue Bonnet  
**Margarine**  
**lb. 21c**

**FREE Valuable Coupons For  
Future Use At Park 'n Shop**  
(Value Over \$1.00)

# PRICES

Red Label <b>Apricots</b> <b>4 for \$1.00</b>	Gerber's Strained <b>BABY FOOD</b> jar <b>8c</b>	<b>MILNOT</b> TALL CAN <b>8c</b>	Bremner's <b>Saltines</b> lb. box <b>21c</b>	Snider's <b>Catsup</b> 14-oz. btl. <b>2 for 25c</b>
Red Label <b>Peaches</b> <b>4 for \$1.00</b>	<b>Miracle Whip</b> qt. <b>49c</b>	Heinz <b>TOMATO SOUP</b> can <b>10c</b>	Red Label <b>Green Beans</b> can <b>10c</b>	Koop's <b>Mustard</b> qt. <b>19c</b>
Red Label <b>Fruit Cocktail</b> <b>4 for \$1.00</b>	Red Label <b>Salt</b> box <b>10c</b>	<b>TOMATO SOUP</b> can <b>10c</b>	Paw-Paw <b>Vinegar</b> pt. btl. <b>10c</b>	Buddy Boy <b>Popcorn</b> lb. <b>15c</b>
Country Delight <b>Fig Bars</b> <b>2 lbs. 39c</b>	Red Label <b>Pears</b> <b>4 for \$1.00</b>	Raggedy Ann <b>Pork &amp; Beans</b> <b>2 cans 25c</b>	Crystal Springs <b>BUTTER</b> <b>59c</b>	Folger's <b>Instant Coffee</b> 10-oz. jar <b>95c</b>
Good Luck <b>Margarine</b> lb. <b>23c</b>	Red Label <b>Tomato Juice</b> <b>4 for \$1.00</b>	Gerber's Junior <b>BABY FOOD</b> jar <b>14c</b>	A-1 <b>Toilet Tissue</b> <b>4 rolls 29c</b>	Red Cross Elbo <b>Macaroni</b> 7-oz. pkg. <b>2 for 25c</b>
Flavor Kist <b>Corn Cheezees</b> pkg. <b>39c</b>	Raggedy Ann <b>Fruit Cocktail</b> <b>2 cans 45c</b>	Red Label <b>POTATO CHIPS</b> Full Pound <b>59c</b>	Flavor Kist <b>Fudge Cremes</b> <b>1 1/2 lbs. 49c</b>	Doumak <b>Marshmallows</b> 10-oz. pkg. <b>19c</b>
Flavor Kist <b>Sugar Wafers</b> pkg. <b>39c</b>	100-count <b>PAPER PLATES</b> <b>79c</b>	<b>POTATO CHIPS</b> Full Pound <b>59c</b>	<b>OVER 3,000 OTHER ITEMS AT EVERY DAY LOW PRICES!</b>	
Gilma <b>Tide or Cheer</b> box <b>74c</b>	Red Label <b>Corn</b> can <b>10c</b>	Raggedy Ann <b>Pineapple</b> <b>4 for \$1.00</b>	Red Label <b>Tomatoes</b> <b>4 for \$1.00</b>	Raggedy Ann <b>Grapefruit</b> <b>4 for \$1.00</b>



## Do You Remember 'Way Back When?'

Highlights of Culver News  
of 10, 20, 30, 40, and 50  
Years Ago This Week

MAY 13, 1953 —

Services will be held this afternoon for Owen Banks, 67, who died Sunday in a Rochester hospital.

The Maxinkuckee Playhouse will open its fourth season here June 23.

At the regular meeting of the Culver Fire Department Monday evening at the Town Hall, a gold 50-year firemen's badge was presented to Monton H. Foss.

Services were held Monday in the Monterey Methodist Church for Mrs. Harriet Young who died Friday in a Rensselaer hospital. She was the grandmother of Mrs. Ora Reed of Culver.

Mr. and Mrs. Charles W. Wentzell of near Leiters Ford celebrated their 50th wedding anniversary with a family dinner in their home Sunday.

MAY 19, 1943 —

OPA officials have announced that the maximum sugar allotment for home canning will be 25 pounds per person in 1943.

Fire of unknown origin destroyed an automobile and garage and damaged part of the side of the house at Donald Miller's late Wednesday night.

The heavy rains of the past week have resulted in flooded rivers all over the State, with Logansport again suffering from the Wabash and Eel Rivers overflowing their banks. As in 1913, Logansport has called on the Culver Military Academy for their aid in rescuing marooned people

cutters and a power boat were sent to the stricken city by special freight train.

Funeral services were held Monday afternoon at Herscher, Ill., for Mrs. Ben Oberlin's father, Charles Lane.

MAY 17, 1933 —

Plans for the annual flower garden and vegetable contest for Union Township school children have been announced by Mrs. J. Dick Newman, chairman of the contest committee.

The famous Black Horse Troop of the Culver Military Academy and escort of honor to many notables, has been invited to escort the Queen of the Century of Progress Exposition in Chicago on Saturday, May 27.

Catherine McFarland won first prize in the Culver Chamber of Commerce oratorical contest last night. Her subject was "The Rebirth Of Europe."

The almost unprecedented season of rain during the past month or so has resulted in the farmers being thrown far behind in their spring planting.

MAY 16, 1923 —

Bess Ralston, formerly of Culver, won the city-wide championship in the South Bend swimming tournament.

The Loudon launches are at the depot pier, being placed in readiness for summer traffic.

Work will be resumed on the Memorial Library at the Academy after a suspension of work for over a year on account of high construction costs. A new recreation building to replace the old one destroyed by fire last winter, has also been started.

MAY 22, 1913 —

S. C. Shilling has traded his old Ford car to Howard Mikesell for

bourne addition. A broncho struck with his fore feet at Dean Walker while he was feeding it in the Pontius livery stable last week. Dean was pretty badly bruised and had a narrow escape from serious injuries.

The ladies are doing some fishing too. Mrs. Charles McLane recently caught a three-pound salmon off the depot pier.

The school census of Culver and Union Township for 1913 shows a gain of 18 in the former and a loss of 38 in the latter compared with last year. The population of the Township, between the ages of 6 and 21, is 259 males and 225 females, total 484. In Culver the school population is 122 males and 127 females.

## Annual Mailbox Improvement Week Is Set

The Post Office Department has designated the week of May 20 to 25 as Mail Box Improvement Week. Postmaster E. W. Mattox urges the patrons of Culver's City delivery and rural routes to take a good look at their mail box. If it is not in good condition now is the time to make the necessary repairs.

The main thing that the department emphasizes is that the boxes be easy and safe to serve and that they give protection to the mail as well as presenting a neat ap-

## TV SERVICE

Best in Equipment  
Best in Experience  
Reasonable Rates

**Kilne's  
Appliances**

CULVER — VI 2-2861

tfn

## audivox HEARING AIDS

Licensed under patents of American Telephone and Telegraph Company, Western Electric Company, Inc., and Bell Telephone Laboratories, Inc.

## Cords - Batteries

For All Makes!

**George L. Collins**

U. S. 31 North - Plymouth

OR

**McKinnis  
Pharmacy**

Culver - Phone VI 2-2871

19-Su

## BEST OF LUCK PARK 'N SHOP

## BENNETT FLOOR COVERING

Box 72 — Atwood, Indiana

PHONE UL 8-2471

Also Linoleum and Ceramic Tile

For Floors and Walls



### A Living Memorial

Contributions for Research to  
perpetuate the memory of an  
associate, relative, or friend!

MAIL GIFTS TO  
INDIANA HEART FOUNDATION  
615 N. Alabama St., Indianapolis

Memorial Gifts Gratefully Acknowledged  
Through the Generosity of

**THE STATE EXCHANGE BANK**

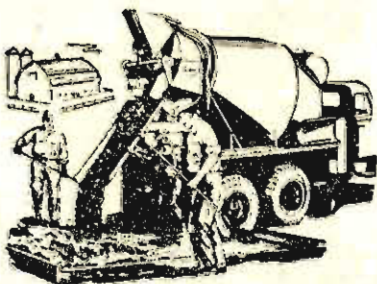
A community service project of the  
Indiana Federation of Business and Professional Women

tfn

We were pleased to furnish  
**READY-MIXED CONCRETE**

for

**PARK  
'N  
SHOP**



**Congratulations and Best Wishes  
For Your Continued Success  
In Culver**

**MARSHALL COUNTY  
CONCRETE COMPANY**

20n

*Pleasure time...every time...enjoy Stroh's at your favorite  
tavern. Taste what fire-brewing does for beer flavor.  
Stroh's is always good company—a smoother, more  
refreshing glass of beer. Next time have a Stroh's, America's  
only fire-brewed beer. Premium quality always...popular  
prices everywhere.*

THE STROH BREWERY COMPANY, DETROIT 26, MICHIGAN



**MAY IS NATIONAL TAVERN MONTH**



# THE CULVER CITIZEN

ON LAKE MAXINKUCKEE • INDIANA'S MOST BEAUTIFUL LAKE

Established July 13, 1894

Devoted to the Interests of Nearly 20 Communities  
in Marshall, Starke, Fulton, and Pulaski Counties  
Having an Estimated Population of 12,000

Published Every Wednesday by The Culver Press, Inc.  
Plymouth, Washington, and Lake Streets, Culver, Indiana

Entered as Second Class Matter at the Post Office at Culver, Indiana,  
Under the Act of March 3, 1879

## SUBSCRIPTION RATES

	Indiana	Out-of-State	Indiana	Out-of-State
1 Year	\$4.00	\$4.50	6 Months	\$2.25
2 Years	\$6.50	\$7.00	3 Months	\$1.25

JOHN A. CLEVELAND, Business Manager  
W. L. THOMPSON, Editor  
MARJORIE FERRIER, Assistant Editor  
MARGARET McDONALD, Assistant Editor  
DALE DAVIS, Printing Superintendent

Sunday afternoon and evening  
supper guests, observing Mother's  
Day, in the home of Mr. and Mrs.  
Clarence Kline were Mr. and Mrs.  
David Lee Smith and family of  
Argos, Mr. and Mrs. Walter Hol-  
derread and family, and Mr. and  
Mrs. Duane Winrowitt and family,  
all of Plymouth, Mr. and Mrs.  
Harold Flora and children of  
South Bend were afternoon call-  
ers.

## Dr. Allen Frew Is Noted CMA Sunday Speaker

Dr. Allen MacLachlan Frew,  
pastor of the First Presbyterian  
Church of Detroit, will be guest  
minister for 10:30 a.m. chapel  
services Sunday, May 19, at Cul-  
ver Military Academy.

One of a series of guest minis-  
ters to speak at the Academy dur-  
ing the winter and summer  
schools, Dr. Frew will deliver a  
sermon during services con-  
ducted by the Rev. Allen F. Bray III,  
Academy chaplain.

**HOUSE OF MAPLE**

Exclusive Early American  
Shoppe

MAPLE & CHERRY FURNITURE

Full Line of Accessories

LARGE SELECTION OF WELL KNOWN BRANDS  
Come In and Browse Around  
116 N. Michigan St.  
Plymouth

Ph. Plymouth 938-3754  
Hours 2 a.m. to 5:30 p.m.  
Closed Thurs. Afternoon  
Sat. Open 9 a.m. to 9 p.m.

Dr. Frew was educated in Glas-  
cow, Scotland, and became a citi-  
zen of the United States in 1938.  
He was educated at Davidson  
N.C. College, Princeton University  
Graduate School, and Princeton  
Theological Seminary. Waynes-  
burg (Pa.) and Davidson College  
have conferred upon him the  
Doctor of Divinity degree.

For 17 years, Dr. Frew served  
as pastor of the First Presbyter-  
ian Church, Ardmore, Pa., before  
moving to Detroit. He serves as  
a member of the Commission on  
Ecumenical Mission and Relations  
of the United Presbyterian  
Church in the United States. He  
is a member of the board of trust-  
ees of Princeton Theological  
Seminary, vice-president of the  
Board of Church Extension, Pres-  
bytery of Detroit, and a member  
of the General Council of the  
Synod of Michigan.

Dr. Frew will be the honored  
guest at an open house from 2  
to 4 p.m. Sunday at the home of  
Chaplain Bray.

Mr. and Mrs. Ben Oberlin re-  
turned to their Culver home Mon-  
day after spending the past six

## Notice To Non-Resident

STATE OF INDIANA  
MARSHALL COUNTY, ss.  
IN THE MARSHALL  
CIRCUIT COURT  
JANUARY TERM, 1963  
IN THE MATTER OF THE  
ADOPTION OF INFANT STEW-  
ART BY HENRY H. SPIER AND  
HELEN L. SPIER, ADOPTING  
PARENTS.

PETITION FOR ADOPTION  
The petitioners in the above-  
entitled cause, by Clifford A.  
Goodrich, attorney, have filed in  
my office their Petition to Adopt;  
and, it appearing by the affidavits  
of two disinterested persons and  
by endorsement on the petition  
that George L. T. Stewart, father  
of said Infant Stewart, is a non-  
resident of the State of Indiana;  
George L. T. Stewart, therefore,  
is hereby notified of the filing  
and pendency of said petition to  
adopt and, unless he appears and  
answers thereto on or before the  
calling of said cause on Tuesday,  
the 10th day of September, 1963,  
being the 8th judicial day of the  
September Term of said Court, to  
be begun and held at the Court-  
house in Plymouth, Marshall  
County, Indiana, on the First  
Monday of September A. D., 1963,  
said petition and the matters and  
things therein alleged will be  
heard and determined in his ab-  
sence.

WITNESS the Clerk and Seal  
of said Court, at Plymouth, Indi-  
ana, this 10 day of May, 1963.

HARVEY E. PHILLIPS,  
Clerk, Marshall Circuit Court  
CLIFFORD A. GOODRICH  
Plaintiff's Attorney

months in Fort Myers, Fla. Wil-  
liam Oberlin of Indianapolis flew  
to Fort Myers and drove the  
Oberlins to the Hoosier capital  
where they spent the weekend.

Mrs. Jerome Zechiel, Sr., and  
Mr. and Mrs. Wilfred Craft were  
the dinner guests on Sunday.  
Mother's Day, of the family of  
Mr. and Mrs. Jerome Zechiel Jr.  
and family.

Mrs. Russell R. Hippensteel,  
Mrs. K. K. Kraning, Mrs. Charles  
W. Crowe, and Mrs. Walter J.  
Muehlhausen were the guests on  
Wednesday of Mrs. Foster Sheller  
at a luncheon, followed by  
bridge, in the Sheller home in  
Fort Wayne. The other club mem-  
bers attending the bridge were  
from Logansport. The Shellers  
are well known in Culver, hav-  
ing lived here for some time  
while Doctor Sheller was a prac-  
ticing dentist.

**THE EQUITABLE LIFE  
ASSURANCE SOCIETY  
OF THE UNITED STATES**

Represented by

**MARION E. JONES**

Culver, Indiana  
Phone Viking 2-2731

**HENRY H. CULVER LODGE**  
No. 617 F. & A. M.

Stated meetings first  
and third Thursdays of  
each month at 7:30  
p.m. Visiting brothers  
welcome.

Thursday, May 16, Stated  
Meeting, M. M. Degree.  
Edward L. Easterday, W.M.  
Harry Winkler, Secretary

**H. L. RECTOR**  
Boat House Frames  
Metal Piers, Steps, Ladders  
410 South Shore Drive  
Phone Viking 2-3143

**O. T. SMITH  
TREE SURGERY  
AND LANDSCAPING**  
W918 Long Point

**R & J  
FOOD MARKET**

Groceries  
Beverages - Meat

Maxinkuckee Landing  
Phone Viking 2-2608

Sinclair  
Gasoline and Oil

Every  
SUNDAY  
9:15 A.M.  
WSBT  
960 k.c.

THE  
BIBLE  
SPEAKS  
TO YOU

NEW CHRISTIAN SCIENCE RADIO SERIES

**Totipot Bath  
and MASSAGE**

For Ladies and  
Gentlemen

**MRS. VERLY SMITH'S  
HEALTH FARM**  
Phone Viking 2-2287  
Culver, Route 2 (County Line  
Road, West of Burr Oak at  
Yellow River Bridge)

Mrs. Chester W. Cleveland of  
East Shore Drive had as her  
guests on Sunday afternoon Mrs.  
A. M. Cleveland, Mrs. Philip R.  
Melancton, Mrs. Arthur M.  
Cleveland, and Mrs. T. C. Eley,  
all of Plymouth. The group en-  
joyed supper that evening at The  
Culver Inn, honoring Mrs. A. M.  
Cleveland.

Attend Church Every Sunday

## Professional Directory

### PHYSICIANS

**REED MEDICAL CENTER**  
121 College Avenue  
Office Phone - Viking 2-2591  
**DONALD W. REED, M.D.**  
General Medicine  
Office Hours:  
1-5 p.m. Monday, Tuesday,  
Thursday & Friday  
7-9 p.m. Mondays & Thursdays  
Saturday, 10 a.m.-12 noon  
Residence Phone Viking 2-2110  
SPECIALISTS' CONSULTATION  
READILY AVAILABLE

**R. HIPPENSTEEL, M.D.**  
Infants and Children  
Office Hours:  
By appointment only  
10-12 a.m. except Thursdays  
Residence Phone Viking 2-3061

**JOSEPH D. HOWARD, M.D.**  
PHYSICIAN  
General Medicine & Obstetrics  
Office: 917 Lake Shore Drive  
Office Hours By Appointment  
Mon.: 1-5, 7-9 P.M.  
Tues., Wed. & Fri.: 1-6 P.M.  
Sat.: 9-12 A.M.  
Office & Residence Phone  
Viking 2-3550

**ERNEST B. NORRIS, M.D.**  
PHYSICIAN  
General Medicine  
Special Attention to  
Eyes & Glasses  
Office Hours by Appointment  
2805 E. Shore Drive  
Viking 2-2853

**OSTEOPATHIC  
MEDICAL PHYSICIANS**

**E. D. POWERS, D.O.**  
PHYSICIAN  
General Practice  
and Rectal Diseases  
Office Hours by Appointment  
Culver Clinic - 222 N. Ohio  
Office Phone Viking 2-3251  
Residence Phone Viking 2-2710

**W. H. FISH, D.O.**  
PHYSICIAN & SURGEON  
General Practice and Urology  
Office Hours by Appointment  
Culver Clinic - 222 N. Ohio  
Office Phone Viking 2-3251  
Home Phone Viking 2-3561

**DENTISTS**

**TROY L. BABCOCK, D.D.S.**  
DENTIST  
Office Hours by Appointment  
Phone Viking 2-2463  
2388 East Shore Drive

**JOHN W. OLDHAM, D.D.S.**  
DENTIST  
Office Hours by Appointment  
Phone Viking 2-2118  
Northern Indiana Public Service  
Company Building

**OPTOMETRISTS**

**DR. F. L. BABCOCK**  
OPTOMETRIST  
Phone Viking 2-3872  
Office Hours:  
8 a.m. to 5 p.m.  
Closed Wednesdays  
203 South Main Street

**COMPLETE  
Optical Service  
Eyes Examined  
OPTOMETRIST**  
222 North Ohio Street  
Phone Viking 2-2257

**GLASSES**  
CONTACT LENSES  
Acousticon Hearing Aid  
Glasses  
**DR. HERSCHELL R. COIL**  
102 W. Main - SYRACUSE  
Call 457-2712 for Appointment

**PODIATRIST**

**RICHARD J. DIETER, D.S.C.**  
Foot Orthopedics  
Surgical Chiropody and  
**FOOT SPECIALIST**  
Thursdays by appointment

## IT'S TIME TO REMEMBER



## CONGRATULATE THE GRADUATE



**Gibson**  
**GRADUATION  
CARDS**  
**CULVER**  
**NEWS AGENCY**  
108 S. Main St.  
20n

## HALF SAVED IS DEAD WRONG



**FIGHTS DISEASE BOTH  
WAYS (NOT JUST ONE)**



**AVAILABLE AT:**  
**Forest Farms**  
ROCHESTER  
As Advertised in  
Farm and Home Section

## What Is Christian Science?

Many who are not Christian Scientists feel that  
this religion is making a vital contribution to the  
moral and spiritual well-being of the nation. Do  
you know why?

You are invited to come to a free, public lecture and learn for  
yourself what Christian Science is and how it can help you gain  
freedom from sin, sickness, and limitation.

First Church of Christ, Scientist, Plymouth, Indiana invites  
you to this lecture entitled:

### "Christian Science:

ITS STABILIZING INFLUENCE IN A CHANGING WORLD"  
by Mary Wollington Gale, C.S.B., of San Francisco, California

8 p.m., Friday, May 24, 1963  
FIRST CHURCH OF CHRIST, SCIENTIST  
420 SOUTH MICHIGAN STREET  
PLYMOUTH, INDIANA

—All are welcome—

Christian Science lectures are for the public. They are free. No  
collection is taken. No obligation of any kind is involved by  
attending. Lectures last one hour and are delivered by members  
of The Christian Science Board of Lectureship of The Mother  
Church, The First Church of Christ, Scientist, in Boston,  
Massachusetts.





# CHURCH NEWS



**FULTON METHODIST CHURCH**  
"The Church With The Chimes"  
Rev. Dr. Ronald C. Williams,  
Pastor  
Robert Lindvall, Superintendent  
Sunday School 9:30 a.m.  
Morning Worship 10:40 a.m.

## Methodist Group Ministry

(A fellowship of Methodist  
Churches in the area south and  
east of Lake Maxinkuckee.)

### FULTON COUNTY PARISH

Theodore R. Roberts, Pastor

### MONTEREY METHODIST

Valentine Reinhold,  
Superintendent

Worship at 9:15 a.m.

Church School at 10:05 a.m.

### DELONG METHODIST

Wally Dinsmore,  
Superintendent

Church School at 9:15 a.m.

Worship at 10:15 a.m.

### LETTERS FORD METHODIST

Leon Welling, Superintendent

Church School at 10 a.m.

Worship at 11:15 a.m.

M.Y.F. on 2nd and 4th Sundays

### CULVER CIRCUIT

Rev. Clyde Beckner Jr., Pastor

### MAXINKUCKEE METHODIST

Enoch Andrews, Superintendent

Worship at 9:30 a.m. every  
Sunday.

Church School at 10:15 a.m.

### MT. HOPE METHODIST

Rev. Clyde Beckner Jr., Pastor

Wayne Kline, Superintendent

Church School at 10:00 a.m.

Worship at 11:00 a.m. on every  
2nd and 4th Sunday.

### SANTA ANNA METHODIST

Rev. Clyde Beckner Jr., Pastor

Philip Peer, Superintendent

Church School at 10:00 a.m.

Worship at 11:00 a.m. on every  
1st and 3rd Sunday.

Evening Worship at 7:30 on  
2nd and 4th Sundays.

### POPLAR GROVE CHARGE

W. Ray Kuhn, Pastor

William Lake, Superintendent

Church School at 10:00 a.m.

Worship at 10:45 each Sunday.

### SAND HILL CIRCUIT

Russell Good, Pastor

Glen Hart, Superintendent

Church School at 10:00 a.m.

Worship at 11:00 a.m. on 1st  
and 3rd Sundays.

### GILEAD METHODIST

Grover Shaffer, Superintendent

Church School at 10:00 a.m.

Worship at 11:00 a.m. on 2nd  
and 4th Sundays.

### RICHLAND CENTER CIRCUIT

Calvin McCutcheon, Pastor

### RICHLAND CENTER METHODIST

Herbert Warner, Superintendent

Sunday School at 9:30 a.m. on  
1st and 3rd Sundays, (10:30 on  
2nd and 4th Sundays).

Worship at 9:30 a.m. on 2nd  
and 4th Sundays, (10:45 on 1st  
and 3rd Sun.).

M.Y.F. at 7:00 p.m.

Prayer and Bible Study on  
Thursdays at 7:00 p.m.

### BURTON METHODIST

William Belcher, Superintendent

Sunday School at 9:30 a.m. on  
2nd and 4th Sundays, (10:30 on  
1st and 3rd).

Worship at 9:30 a.m. on 1st  
and 3rd Sundays, (10:45 on 2nd  
and 4th Sun.).

M.Y.F. at 7:00 p.m.

Evening Worship at 7:30 on  
2nd and 4th Sundays.

Prayer and Bible Study on  
Wednesdays at 8 p.m.

### PRETTY LAKE EVANGELICAL UNITED BRETHREN CHURCH

Thomas Routh, Pastor

Frank Bair Jr., Superintendent

Morning Worship 9:15 a.m.

Sunday School 10:00 a.m.

Evening Worship 7:00 p.m. on  
alternate Sundays.

Prayer Meeting 7:00 p.m. Wed-  
nesday.

### SAINT ANN'S CATHOLIC CHURCH, MONTEREY

Rev. Edward Matuszak,  
Pastor

Sunday Masses: 7:30 and 9:30  
a.m.

Weekday Masses: 8:05 (Win-  
ter) 7:00 (Summer).

Holy day of Obligation: 6:30  
a.m. Evening as announced on  
Parish bulletin.

Holy Communion distributed  
each weekday at 7:00.

Confession: Saturday 4 to 5  
p.m. and 7 to 9 p.m. Before Sun-  
day Masses.

**HIBBARD E.U.B. CHURCH**  
Rev. L. K. McKinley, Pastor  
Richard Behmer, Superintendent  
Sunday School 10:00 a.m.  
Morning Worship 11:00 a.m.

### BURR OAK CHURCH OF GOD

R. Warren Sorenson, Pastor

Mrs. Mary Hatten, Superintendent

Larry Norman, Ass't. Supt.

Sunday School 9:45 a.m.

Worship Service 10:45 a.m.

Evening Study Hour 7:30 p.m.

Holy Communion observed the  
first Sunday of each month dur-  
ing the morning worship service.

A cordial welcome is extended  
to all to worship with us.

### MEMORIAL CHAPEL

CULVER MILITARY ACADEMY

Chaplain Allen F. Bray, USNR

Holy Communion — 8:00 a.m.

Chapel Service — 10:30 a.m.

The Chapel is open daily for  
personal prayer and meditation  
from 7 a.m. until 10 p.m.

Visitors always welcome!

### ST. THOMAS' EPISCOPAL

Center and Adams Sts., Plymouth

Father William C. R. Sheridan,  
Pastor

Winter Schedule

7:30 a.m. Holy Communion

9:30 a.m. Family Eucharist

9:30 a.m. Church School, Nur-  
sery

### CULVER BIBLE CHURCH

718 South Main Street

Donald Taylor, Assistant Pastor

Sunday School 10:00 a.m.

Classes for all ages.

Morning Worship 11:00 a.m.

Separate services for pre-  
schoolers through fourth grade.

Training Hour 6:30 p.m.

Evening Service 7:30 p.m.

Nursery available for all Sun-  
day services.

Prayer Meeting and Bible Study  
7:30 p.m. Wednesday.

### BURR OAK E.U.B. CHURCH

Rev. L. K. McKinley

Morning Worship 9:00 a.m.

Sunday School 10:00 a.m.

### GRACE UNITED CHURCH

Rev. H. W. Holman, Pastor

Music

Mrs. Robert T. Rust

Margaret Swanson

Sunday School 9:30 a.m.

Morning Worship 10:30 a.m.

### UNION CHURCH OF THE BRETHREN

State Road 17

Clyde Lehman, Pastor

Joe Helser, Superintendent

Sunday School 9:30 a.m.

Morning Worship 10:30 a.m.

### TRINITY LUTHERAN CHURCH

City Library (Culver)

R. J. Mueller, B.D. pastor

(phone: Rochester: CA 3-5624)

Worship Services every Sunday  
at 9:00 a.m.

Sunday School at 10:00 a.m.

Children's Confirmation Class  
at 5 p.m. Fridays.

Communion on last Sunday of  
the month.

### ST. MARY'S OF THE LAKE CATHOLIC CHURCH

"The Church With The  
Gold Crosses"

Rev. Joseph A. Leuk, Pastor

Sunday Mass 7:00 a.m., 8:00  
a.m. and 11:00 a.m.

Daily Mass 9:00 a.m.

Confessions Saturday 7:00 a.m.  
to 9:00 p.m.

Confessions Sunday 7:00 a.m.  
to 9:00 a.m.

### ZION GOSPEL CHAPEL

Rev. Donald Miller, Minister

Marion Kline, Superintendent

Dwight Kline, Class Leader

Manson Leap, Lay Leader

Sunday School 9:30 a.m.

Preaching Service 10:45 a.m.

Evening Worship 8 p.m., every  
4th Sunday of the month.

Prayer Meeting Thursday 8:00  
p.m.

Everyone Welcome.

### TRINITY EVANGELICAL UNITED BRETHREN CHURCH

Thomas C. Routh, Minister

Roger O. York, Superintendent

Sunday School 10:00 a.m.

Morning Worship 11:00 a.m.

Evening Worship 7:30 p.m. on  
alternate Sundays.

Choir Practice 6:30 p.m. Thurs-  
day.

Prayer Meeting 7:30 p.m.  
Thursday.

Ladies Aid 1:00 p.m. Second  
Thursday of each month.

### TEMPLE OF FAITH MISSION

Rev. B. R. Cross, Pastor

Located west of State Road 35

on State Road 10 to California

Township School and one mile  
north.

Sunday School 9:30 a.m.

Morning Service 10:30 a.m.

Song Service 7:00 p.m.

Evening Service 7:30 p.m.

Fourth Sunday evening of each  
month there will be a full evening  
of spiritual singing and special  
music with vocal and instrumen-  
tal numbers.

To those who do not attend  
elsewhere. We welcome you.

### SEVENTH DAY ADVENTIST

M. G. Johnson, Pastor

Worship Service 9:30 a.m.

Sabbath School 10:30 a.m.

### EMMANUEL EVANGELICAL UNITED BRETHREN CHURCH

Rev. Walter Chisholm, Pastor

George Warner, Superintendent

Sunday School 9:30 a.m.

Morning Worship 10:30 a.m.

Youth Fellowship 7:15 p.m.

Evening Worship 8:00 p.m.

### FIRST CHURCH OF CHRIST SCIENTIST

423 S. Michigan St., Plymouth

Sunday School 10:30 a.m.

Morning Worship 10:30 a.m.

A Bible Lesson on the subject  
of "Mortals and Immortals" will

### The Culver Citizen — Culver, Indiana — May 15, 1963 — Page 13

be read this Sunday at First  
Church of Christ Scientist, Plym-  
outh.

Golden Text: "This corruptible  
must put on incorruption, and  
this mortal must put on immor-  
tality" (I Cor. 15-53).

Related readings from the  
Christian Science textbook in-  
clude these lines: "Either here  
or hereafter, suffering or Science  
must destroy all illusions regard-  
ing life and mind, and regener-  
ate material sense and self. The  
old man with his deeds must be  
put off" ("Science and Health  
with Key to the Scriptures" by  
Mary Baker Eddy, p. 296.)

## Mt. Hope

By Mrs. Guy B. Davis  
Phone TRinity 1-2765

On May 16, 75 years ago the  
local church was officially or-  
ganized and became known as  
Mt. Hope, affiliated with the  
Methodist Protestant denomina-  
tion. In memory of the occasion  
an anniversary service will be  
held next Sunday morning, May  
19, following Sunday School. A  
cordial invitation is extended to  
friends and old members of the  
church to attend the service.  
Mr. and Mrs. Paul Mathias of

Bloomington, Ill., were Saturday  
overnight guests in the home of  
Mr. and Mrs. Guy Davis.

Mr. and Mrs. Don Davis and  
family entertained Mr. and Mrs.  
Whitney Kline, Mrs. Effie Kline  
and Mr. and Mrs. Guy Davis at  
dinner Sunday in honor of Meth-  
er's Day.

## Lutheran Church Bible School Begins May 27

The Trinity Lutheran Church  
has announced plans for the an-  
nual Church Vacation Bible  
School to be held in the American  
Legion Hall on Highway 10 just  
west of State Road 17. The hours  
are 1:30 to 4:00 p.m. on May 27,  
28 and 29, also the week of June  
3 to 7.

The theme of the course to be  
studied is "Walking With God."

Non-members are cordially in-  
vited to attend these sessions.  
Contact Richard O. Hambrook at  
VI 2-2412 or Hugo Anderson at  
VI 2-2192. Certificates will be  
awarded to those who complete  
the Vacation Bible School.

**FIRE DEPARTMENT** calls  
should be made to Viking 2-2121.



the  
MOTHER  
who couldn't  
take it

Once there was a mother who had  
a normal, healthy boy. And he liked  
to do the things that normal, healthy  
boys like to do.

But, for a long while, Mother  
couldn't take it. She kept saying,  
"DON'T Bobby — you'll hurt your-  
self!"

Then one day, as she passed the  
playground, she marveled at a bold  
youngster's feats on the horizontal  
ladder. And, coming closer, she dis-  
covered it was Bobby!

Now she has more confidence in  
her son . . . and better understands  
his confidence in himself.

Sound religious training begins  
with confidence and understanding.  
In churches of our community youth-  
ful eagerness is directed toward right  
motives, high ideals, clean activities.  
Moral and spiritual conviction begin  
to supersede daring and pride as in-  
centives for action.

Your child already has faith in  
himself. Through the Church's guid-  
ance and your example this rudimen-  
tary faith can be enriched and tem-  
pered by faith in God.

### THE CHURCH FOR ALL • ALL FOR THE CHURCH

The Church is the greatest factor  
on earth for the building of charac-  
ter and good citizenship. It is a store-  
house of spiritual values. Without a  
strong Church, neither democracy  
nor civilization can survive. There  
are four sound reasons why every  
person should attend services regu-  
larly and support the Church. They  
are: (1) For his own sake. (2) For  
his children's sake. (3) For the sake  
of his community and nation. (4)  
For the sake of the Church itself,  
which needs his moral and material  
support. Plan to go to church regu-  
larly and read your Bible daily.

Copyright 1963, Keister Advertising Service, Inc., Strasburg, Va.

Sunday	Monday	Tuesday	Wednesday	Thursday	Friday	Saturday
Proverbs 8:21-27	Proverbs 14:24-30	Isaiah 30:12-18	II Corinthians 3:1-6	Ephesians 3:7-19	Colossians 3:12-17	Hebrews 10:32-39

This Feature Is Made Possible By The Following Firms Who Invite You To  
Attend A House Of Worship Each Week

### Culligan Soft Water Service

1122 W. LaPorte St.  
Phone 936-3556  
Plymouth, Ind.  
Serving all of Marshall Co.

### The State Exchange Bank

Member FDIC  
Culver, Ind.

### Cook Bros. Furniture

Carpet & Bedding Specials  
Phone 936-2223  
113 S. Michigan St.  
Plymouth, Ind.

### Crabb Furniture Store

Where Quality and Prices  
Go Hand In Hand  
220 N. Main St.  
Phone Viking 2-2521  
Culver, Ind.

### Walter Price's Abattoir

Wholesale & Retail Meats  
1/4 Mile South of Plymouth  
on Muckshaw Road

### Gates & Calhoun Chevrolet, Inc.

Complete  
Automotive Service  
West Jefferson  
Viking 2-3000  
Culver, Ind.



# CLASSIFIED ADS



## Culver's Four-County Trading Area's Recognized Market Place

RATES: Up to 25 words, 75c; 2 weeks, \$1.30; 3 weeks, \$1.65; 4 weeks, \$1.80. Up to 50 words, \$1.50; 2 weeks, \$2.60; 3 weeks, \$3.30; 4 weeks, \$3.60. Additional words 3c each. Minimum charge 75c. Special discount for 26 or 52 consecutive insertions. RATES quoted are for cash with order; add 25c if charged. Service charge of \$1 for blind ads in care of The Citizen. Classified display, \$1 per inch. Card of Thanks, In Memoriams, and Obituaries, \$1.25. Front page reading notices, up to 35 words, \$10. Local display advertising rate 70c per column inch. Ads accepted until 9 a.m. Wednesday, day of publication.

### NOTICES

**PLANE TRANSPORTATION** to most Midwest cities, east of Chicago and west of Washington, D.C., at saving of 40% of regular fare, plus federal tax. If interested phone or call at The Citizen office 35tfn

## ALL KINDS OF JOB PRINTING

THE CULVER PRESS  
SPECIAL SERVICES

**HILLTOP BEAUTY SHOP**  
1/4 mile south 110. Open Mondays, Thursdays, Fridays and Saturdays. Also evenings. Big permanent sale — Reg. \$10.00 for \$6.50, etc. Call 871-2732. Audrey Mishler, Route 1, Culver, 19-2n

**POWER MOWER & MARINE**  
Bolens, Certified, Jacobsen, Lawn Boy, Wheel Horse, Evinrude Motors, Razor-Back Boats, 2-cycle gas, MIKE FITZGERALD'S, Phone Viking 2-3535, 439 S. Main St. — CULVER tfn

**FIX-IT SHOP**, 116 N. River St., Plymouth, Ind., Charles Abert, Repairs made on all appliances, toasters, vacuums, power tools, electric controls, etc. 18-4\*

**ADDIE'S PIE SHOP**  
119 E. LaPorte St. — Plymouth  
Featuring Home Style Baked Goods  
FRESH DAILY  
Pies — Cakes — Cookies  
Breakfast & Dinner Rolls  
Doughnuts  
Complete Line Of Delicatessen Foods  
Phone 930-3867 2tfn

**FELKE FLORIST**  
Plymouth  
Cut Flowers and Potted Plants Of All Kinds  
Funeral Work A Specialty  
We are as close as your phone 930-3165 COLLECT 15tfn

**LIMESTONE DRIVEWAYS** — \$4.30 ton spread. Also gravel, top dirt, fill. Agricultural limestone, Calcium 56.55%, magnesium 42.10%, neutralizing value 106. A.S.C.P. approved \$4.50 ton spread. George Hopple Trucking, Viking 2-2514. 11-4\*tfn

**Free! Free! Free!**  
Moth Proofed - Mildew Proofed - Odor Proofed  
DO YOUR DRYCLEANING, WASHING & DRYING WHILE-YOU-SHOP  
Dry 10c  
Wash 20c  
Drycleaning \$1.50  
It's All New  
Coin Operated

**Downtown Laundromat Drycleaner**  
Behind Culver Hardware 20n

**ATTENTION FARMERS:** Specialists in tractor, generator, and starter repair. Rochester Armature and Ignition Co., 510 Main Street, Phone Capital 3-2314, Rochester, Ind. 0tfn

**ABSTRACTS OF TITLE** to Real Estate in Marshall County by LACKEY AND MURPHY, Phone 936-2229 or 936-4421. 22tfn\*

**CALL US FOR** the ceramic wall and floor tile, new kitchen cabinets or that aluminum siding that your home needs now. Maxinkuckee Homes, 110 S. Main St., Culver, Ind. 19-2\*

**SILOS & SILO REPAIRS** — Concrete Stave, Roofs, Chutes, Innercoats, Banding, all accessories. UNLOADERS, Screw feeders, STORMOR storage and Drying bins. BATCH dryers. Chester C. Diettert, North Judson, Ind. 19-27\*

**CONCRETE SEPTIC TANKS** \$50 and up. Grease traps and distributions tanks. Shirar Brothers, 1203 Chester St., near Cemetery, Plymouth, Ind. Phone 936-3410. 10-52\*

**HUDON TYPEWRITER SERVICE**, 101 1/2 North Michigan St., Plymouth. Sales-Service-Rentals. Typewriters and Adding Machines. Repairs on all makes. Royal Portable dealer. Phone 936-2728. 38tfn

### HELP WANTED

**HELP WANTED:** Machine operators for semi-skilled jobs. Should be able to read micrometer and blue prints. We are an equal opportunity employer. Apply employment office. Sealed-Power Corp., Rochester, Ind. 20-3n

**Wanted** — Single man for year around farm work. Experienced with livestock and machinery. References. BLACK ARROW FARM, Route 6, Rensselaer, Ind. Phone 866-3436. 20n

**WANTED:** Household help, by day or week. 810 West Shore Dr., Culver. 18tfn

## WANTED

**WANTED!**  
Shoppers Who  
Are Looking  
For Bargains  
In Ladies' and  
Children's Wear —  
WE ARE GOING  
OUT OF BUSINESS  
Town & Country  
120 S. Michigan St.  
ARGOS 19-3n

### FOR SALE

Now 10 pct. more useable space at no additional cost in a "Pace-maker" building by Smiley Buildings. Write or call Leonard Stackhouse, R. 1, Bourbon, Ind. Millwood NI 6-2515. 20n

**FABRIMATCH PAINTS**, alkyd flat wall, latex flat wall, satin semi-gloss enamel — over 1400 colors. CULVER HARDWARE. 13tfn

**FOR SALE:** Combination baby buggy and car bed, also "Teeter Babe." Phone Viking 2-2957. 18tfn

**YOU DON'T HAVE** to put up with a too-small home! Live it up in the "big space" National Homes for as little as \$60 a month. Maxinkuckee Homes, Charles Edgington VI 2-3002, Harry Edgington VI 2-2657, Culver, Ind. 8tfn

**FOR SALE:** Wooden 14-ft. fishing boat. Phone Viking 2-2926, J. C. Spencer, West Terrace, Culver. 20-3\*

**SPINET PIANO**  
May be had by assuming small monthly payments. See it locally. Write Credit Dept., Box 172, Elkhart, Ind. 19-2\*

**FOR SALE:** One "York" mellophone and one large drum. Phone 936-2229 or 936-4421. 22tfn\*

**Impreg. 1/2" sheathing board 4x8**, \$49.50M c-c. Spruce 10" shiplap and boards 100% useable \$94.50M c-c. Red Cedar bevel siding B \$112.50M c-c. Low cash warehouse prices and special quantity prices on nearly everything for building. Prompt deliveries in Tri-State area - lowest total costs. Phone collect for free estimates and plans. Leesburg Lumber, Leesburg, Ind. 453-3144. 20n

**FOR SALE:** 12 Horse Elgin Boat Motor, \$65.00. Dale Davis, Culver, Ind., Ph. VI 2-3178. 20tfn

**Log Cottages, A-Frames, Plywoods** — pre-cut to be exactly as planned. Lowest possible cost. Delivered and erected anywhere. Catalog 30 cents. Mills Cabin Mills, M-75, Boyne City, Mich. 20n

**Strawberry Plants** — Michigan certified virus free. Grown in cooperation with Michigan State University's program of indexing. Isolation grown, 10 day spray schedule throughout growing season to control virus carrying Aphids, fumigated soil, plus irrigation & proper cultural methods. Robinsons, Early Dawns, Tennessee Beauty, Midway, Sparkle, Empire, Catskill, Surecrop and Dunlap. Dean Foster & Sons, Hartford, Mich., phone 621-3460 or 621-3789. 20n

**Brand New 1 or 2 row 3-point** cultivators will fit Ford, Ferguson or any 3-point hitch. 1 row \$100, 2 row, \$165. Also other farm implements. Alex Kniec, 2 1/2 miles West of Rolling Prairie on U.S. 20. 20n

**FOR SALE:** Small piano, \$250. Call Viking 2-2971 after 5 p.m. Mrs. Charles Ferrier. 18tfn

### BOATS FOR SALE

**WEST SHORE BOAT SERVICE**  
• Sales • Service • Storage  
• Rentals • Gas & Oil • Launching  
— Mercury Motors —  
Crosby and Lone Star Boats  
— All Marine Supplies —  
588 West Shore Drive, Culver  
Phone Viking 2-2100 tfn

### FARM EQUIPMENT FOR SALE

**JOHN DEERE**  
"Quality Farm Equipment"  
Plymouth Farm Supply  
Bargains — New & Used 26tfn

### LIVESTOCK FOR SALE

**For Sale** — 20 Reg. Angus Cows with calves at side and 15 Reg. Angus Heifers. BLACK ARROW FARM, Route 6, Rensselaer, Ind. Phone 866-3436. 20n

**Registered Angus Cattle.** Quality stock. Bred and open heifers. Excellent conformation. Top Eileen-mere breeding. Walnut Hill Farm R2, Lawrence, Mich. 20n

### AUTOMOBILES FOR SALE

**FOR SALE:** 1948 Reo 1 1/2 ton truck, in fair condition, 8:25 tires. After 5 p.m. see or call Kenneth Shei, Viking 2-2352. 20-2n

### REAL ESTATE FOR SALE

**Sales REAL ESTATE**  
see  
**C. W. EPLEY REALTY**  
Lake Residential 11tfn

**Wawasee** — Ranch type year-around home 2 years old, all modern with attached garage. Furnished. Will sacrifice for quick sale. Call or write C. E. Warner, R.R. 4, Syracuse, Ind. 457-3465. 20n

**FOR SALE:** Three-bedroom house and five-bedroom house, both one block north of Town Park. Phone VI 2-2411. 18tfn

**Business Lake**  
To Buy or Sell  
**REAL ESTATE**  
Call  
Dale or Rebecca Jones, Salesmen  
Chipman, Jenkins & Chipman,  
Brokers  
Phone VI 2-3128  
Residential Farm 1-26\* tfn

**"WINNS BARN"** — Beautiful 16-acre Tippecanoe River estate, rustic main lodge, modern, three-bedrooms, 1 1/2 baths, built-in kitchen, two guest cottages, bath house, two-car garage. Owner leaving state, sacrifice price, \$42,500. Smith-Downs, Rochester, CA 3-3011. 19-4n

**160 ACRES.** Good land and buildings. Smith-Downs, Rochester. 19-4n

**TIPPECANOE RIVER:** Modern home, nearly new, only \$6,750. Smith-Downs, Realtors, Rochester, CA 3-3011. 19-4n

**A DOLL HOUSE:** Year around lake home tastefully furnished, only \$10,900. Smith-Downs, Rochester, CA 3-3011. 19-4n

### APARTMENTS FOR RENT

**FOR RENT:** Three-bedroom apartment, newly redecorated, new gas furnace. Near the lake. A. R. McKesson, phone VI 2-2605. 20tfn

**FOR RENT:** Light airy apartment, oil heat, hot water, electric stove and refrigerator. Furnished. Phone Viking 2-3021. 19tfn

### FOR RENT

**FOR RENT:** 3 bedroom, modern house. Close to Culver, Glen Snyder, VI 2-2629. 20-2\*

**FOR RENT, GUEST HOUSE.** A home away from home, completely furnished. Available days, week, month, or season. Lake Maxinkuckee privileges. Call Viking 2-2684. 8-26\*

### MISCELLANEOUS

**Love's Resort** — Diamond Lake, Modern housekeeping cottages. Bass, Bluegill, Perch fishing. \$35 to \$55.00 weekly, including boat. Safe sandy beach, near golf and archery courses. For reservation, phone 3082 or write White Cloud, Mich. 20n

## LOST

**LOST OR STOLEN** from school locker: brown pocket-sized Zenith transistor radio. Phone Viking 2-2018. 20\*

**LOST:** 5 skin Kol-linsky fur stole Sunday on Main St. in the neighborhood of Don Trone's Sport Shop. Call Mrs. Chauncey Simmons, Viking 2-2633. 20-2\*

### FOUND

**FOUND:** Pair of dark grey shell rimmed glasses. Found in the area of South Plymouth St., near the lake. Owner may claim glasses by calling at The Citizen office and paying for this ad. 20n



**CARDS OF THANKS**  
We wish to express our sincere gratitude to all our friends and neighbors for the many kindnesses and expressions of sympathy, including the lovely flowers and cards sent during the illness and passing of Mrs. Ann Aylsworth. THE FAMILY. 20n

## Girl Scout News

By PAM THOMPSON

Members of Girl Scout Troop 143 held their regular meeting recently at St. Mary's of the Lake Catholic Church.

The meeting began in the usual manner, after which the girls made plastic planters for their mothers in observance of Mother's Day. They practiced for the Brownie Fly Up.

Refreshments were furnished by Sharon King.

By KATHY TASCH

Troop 52 opened the meeting on May 14 at the St. Mary's of the Lake Catholic Church.

After the opening there was discussion on whether or not to keep the Clover Leaf Patrol Schedule. Refreshments were served and Janet Helber gave a demonstration on embroidery. Songs were directed by Karen Banks.

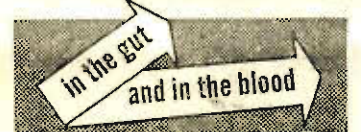
Next week Troop 52 will entertain the second grade brownies at the home of Mrs. Robert Zechiel.

Mr. and Mrs. Robert Riewoldt spent the weekend in New Castle with their daughter and family. Mr. and Mrs. Herbert Bunch and Lisa.

## HALF SAVED IS DEAD WRONG



**FIGHTS DISEASE BOTH WAYS (NOT JUST ONE)**



AVAILABLE AT:

**Leiters Ford Elevator**  
LEITERS FORD

As Advertised in Farm and Home Section

## See Us For Your INSURANCE NEEDS!

- Auto
- Home
- Farm
- Commercial
- Boats
- Motors
- Bonds
- Personal Effects
- Accident & Health
- Travel
- Life
- Hail



## STATE EXCHANGE INSURANCE AGENCY

State Exchange Bank Building — CULVER  
Phone Viking 2-3321

Hampton Boswell, Manager  
Robert Cultice, Agent F. Norman Witt, Solicitor 8tfn



## Santa Anna

By Mrs. Guy Kepler  
Phone Argos TWinoaks 2-5459

Attendance at Sunday School was 105. Mothers were honored by gifts. The eldest mother was Mrs. Eldora Snyder; the youngest, Mrs. Shirley Trump; and the family with most children present, Mr. and Mrs. Jim Davis. The M.Y.P. met at this church Sunday evening. The Home Builders Class will have a class party at the church next Friday evening, May 17.

Mrs. Charles Goheen fell and hurt her leg Thursday and is now

home. Mrs. and Mr. Melvin Ferguson and Jim, Mr. and Mrs. Floyd Crow, Mr. and Mrs. Wayne Crow, Mrs. Everett Gibbons and Mrs. Olive Quimby.

## Burr Oak

By Mrs. Floyd Carrothers  
Phone Viking 2-2028

The E.U.B. Mothers and Daughters party will be Friday evening, May 17, at 8 p.m. in the annex.

Mr. and Mrs. Ralph Condon, Sr. attended the birthday dinner for their grandson, James Allen Condon, in the home of Mr. and Mrs. Ralph Condon Jr. at Knox Sunday.

A Mother's Day party was given in honor of Mrs. Sylvester Harness at her home Sunday. Those present were her husband, Mr. and Mrs. Rocky Sullivan and daughter Janet of Plymouth, Mr. and Mrs. James Kuchel and Jimmie, Mrs. Jacob Kuchel, Doris, Evelyn, and Juanita of Grovertown, Mr. and Mrs. Lawrence Harness, Clarence, Paul and Bob, and Mr. and Mrs. Raymond Kuchel of Culver.

## Leiters Ford

By Treva Leap  
Phone Leiters Ford 2676

The Zion Gospel Chapel Missionary Society met with Mrs. Ruth Sopher on Wednesday evening, May 8. The meeting opened by the group singing, "Trust and

followed by prayer by Mrs. Lucy Guise. The lesson was given by Mrs. Romaine Wentzel on the topic "Abigail," and scripture was read by Patricia Hamilton. Several Mothers' Day poems and readings were read by Mrs. Tot See and Mrs. Lucy Guise. Roll call was answered with a scripture verse with the word "good" in it by 12 members, 2 guests and 2 children present. It was decided to have the June meeting start at 8 o'clock at the home of Mrs. Tot See. Mrs. Lucy Guise had the invocation after which the hostess served refreshments.

The Seniors of the Aubbeenaubee High School entertained their mothers at a supper at the Wil-Wood Restaurant in Leiters Ford Wednesday evening.

## Poplar Grove

By Mrs. Carroll Thompson  
Phone Argos TWinoaks 2-5028

Attendance at Sunday services was 66. Mothers honored with a gift of a plant were Mrs. Herbert Blocker, Mrs. Lawrence Hissong and Mrs. Allen Dennie.

Six members of the W.S.C.S., the Rev. Ray Kuhn and Carol attended the W.S.C.S. visitation meeting at Ober on Wednesday afternoon. W.S.C.S. secretaries of lines of work met at the Carroll Thompson home Friday evening to fill out reports. The next meeting of the W.S.C.S. will be a work meeting at the church, the date to be announced later.

"Living With Christ" is the

theme of the Bible School to be held at the church May 27-June 1, 9:00 to 11:30 a.m. There will be classes for preschool, primary and junior groups. All children are welcome.

An ice cream social, sponsored by the Education Committee and Fellowship Classes, will be held at the church Saturday evening, June 1.

## Christian Science Lecture To Be Given At Plymouth

The stabilizing power of prayer will be brought out in a free public lecture on Christian Science to be given in Plymouth at 8 p.m. on Friday, May 24, by Mary Wellington Gale of San Francisco.

A member of The Christian Science Board of Lectureship, Mrs. Gale will speak in The Edifice of the Christian Science Church, 428 S. Michigan St., Plymouth, under the auspices of First Church of Christ, Scientist, Plymouth. Her subject will be "Christian Science: Its Stabilizing Influence in a Changing World."

A native of Belmont, Mass., Mrs. Gale was educated at Smith College and the University of Chicago. She was in the advertising business before entering the public practice of Christian Science. She has been an authorized teacher of Christian Science since 1952. She has lectured throughout the United States and Canada, in the British Isles, and on

the Continent.

## 146 Attend The Alumni Banquet At Leiters Ford

The Leiters Ford-Aubbeenaubee Alumni held their annual dinner-dance at the Aubbeenaubee gym last Saturday evening, May 11.

The Leiters Ford Methodist Church served a delicious ham dinner to 146 alumni and their guests.

Officers elected for the 1964 alumni banquet are: Thomas Russell, president; Gary Fields, vice-president; Mrs. Fred Dittmire, secretary; and Mrs. Wayne Hissong, treasurer.

Following the dinner and program, the evening was spent socializing and square and round dancing.

## MARKETS

Shelled Corn	1.10
Oats	.75
Ear Corn	1.08

## THE WEATHER

Tuesday	77	50
Wednesday	86	64
Thursday	89	67
Friday	73	39
Saturday	59	29
Sunday	59	45
Monday	77	46
Tuesday		54

It Pays To Advertise

## HALF SAVED IS DEAD WRONG



FIGHTS DISEASE BOTH WAYS (NOT JUST ONE)



AVAILABLE AT:

**Burr Oak Hardware**  
BURR OAK

As Advertised in Farm and Home Section

## Gates & Calhoun IS WHY CHEVY'S THE BUY!

## OK USED CAR SALE

SOLD WITH OUR FAMOUS OK USED CAR WRITTEN WARRANTY

### CHEVROLETS

1962 Corvair Monza: 2-dr., 4-speed, 102 h.p. engine, radio, white wall tires \$1998

1962 Chevrolet BelAir: 4-dr., V-8, powerglide, power steering \$2198

1962 Chevrolet BelAir: 4-dr. station wagon, V-8, powerglide, power steering, radio, extra low mileage. Really sharp! \$2498

1960 Corvair "700": 2-dr. coupe, 3-speed trans. Very clean \$1198

1959 Chevrolet Impala: 2-dr. sport coupe, V-8, auto. trans. A nice one! \$1398

1957 Chevrolet "210": 2-dr., 6 cyl., stick, extra low mileage \$ 698

1957 Chevrolet BelAir: 4-dr., 6 cyl., stick, new paint \$ 798

1956 Chevrolet BelAir: 2-dr., 6 cyl., p.g., one owner \$ 598

1959 Chevrolet Parkwood: 4-dr., 9-pass. wagon, 6 cyl. A nice one! \$1298

### OTHER MAKES

1957 Oldsmobile "98": 2-dr. htdp., full power \$ 398

1957 Mercury: 4-dr. sedan, auto. trans., all black \$ 398

1958 Buick: 4-dr. sedan. Looks like new \$ 898

1959 Ford: 2-dr. convertible, V-8, auto. trans. A clean one \$1198

### TRUCKS

1952 G.M.C.: 1/2-ton pickup \$ 198

1957 International: 3/4-ton pickup, new paint \$ 798

1959 Chevrolet: 1-ton panel \$1198

1960 G.M.C.: 1/2-ton pickup \$1298

1961 Corvair "95": 1/2-ton pickup \$1498

TWO LOCATIONS TO SERVE YOU

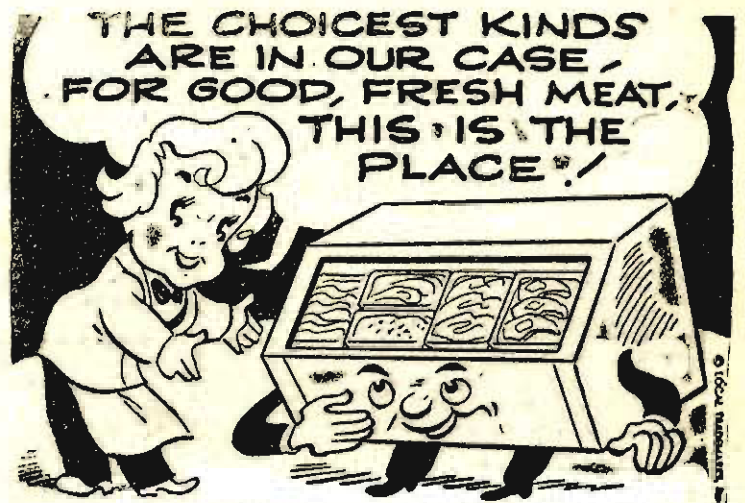
"Remember, for a better deal and quality service, see"

## Gates & Calhoun Chevrolet



ARGOS, IND. U.S. 31 N.  
TEL: 892-5156

CULVER, IND. W. JEFFERSON ST.  
TEL: VI 2-3000



OSCAR MAYER ALL MEAT

## WIENERS

**lb. 49¢**

Prem. Proten Beef

**Pot Roast lb. 49c**

Prem. Proten Standing

**Rib Roast lb. 69c**

Tender, Delicious

**Ck. Steak lb. 65c**

For Barbecueing

**Beef Ribs lb. 39c**

Lean Shoulder

**Pork Steak lb. 39c**

Country Style

**Back Bone lb. 39c**

CRYSTAL SPRINGS

## BUTTER

PACKED IN QTRS.

**lb. 59¢**

Defiance Salad

**Dressing qt. 39c**

Gerber's Strained

**Baby Food 3 - 29c**

"It Whips"

**Milnot 3 - 29c**

Defiance Red Kidney

**Beans 308 cans 8 - \$1**

Defiance Tomato

**Juice 46-oz. cans 4 - \$1**

Argo Heavy Syrup

**Plums 2 1/2 can 4 - \$1**

WEBER'S

## BREAD

REG. 21c LOAF

**6 for \$1.00**

No. 1 White

**Potatoes 10 lbs. 39c**

Fresh, Golden

**Carrots cello bag 10c**

Jonathan

**Apples cello bag 49c**

Family Fare Liquid

**Detergent quart 49c**

Facial Tissue

**Puffs 400 ct. 23c**

Colored Bathroom

**Tissue 10 rolls 99c**



## GRETTHER'S

"ACROSS from THE BANK"



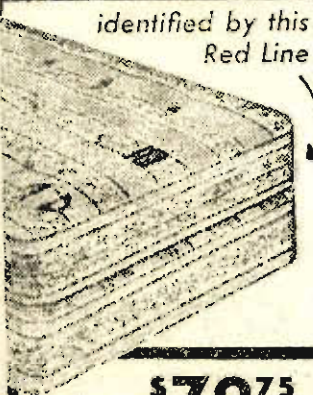
## FOOD MART

Custom Cut QUALITY MEATS  
106 N. MAIN ST. CULVER

## Sleep Away Tension

ON THE ENGLANDER TENSION-EASE

identified by this Red Line



**\$79.75**

matching box spring \$79.75

Also

available in Foam Latex

REMEMBER — Your dollar buys more at the

**ARGOS FURNITURE STORE**

117-119 N. Michigan St. ARGOS

Open Wed. and Sat.

Until 8:30 P.M.

Owned and Operated by

Fred and Mary Steffy

WE DELIVER

Phone 892-5235





DAVID KELLY, Troop Scribe

Thirty-three Boy Scouts attended the second meeting of May. Pre-opening games were "tug-of-war" and "steal-the-bacon." The Panther Patrol won the tug-of-war contest. Opening ceremony was conducted by the Beaver

Patrol. Announcements were given and Carl Strang was then inducted as Den Chief of Pack 290. Cubmaster James McCombs was present for this ceremony. Scouts Greg Easterday and Terry Powers demonstrated whipping of a rope and diagonal lashings. Patrol corners were held with dues and attendance being taken. "Circle pull" was the closing game with the Wolf Patrol winning. Tim Frain, Richard Snyder, David Curtis and Perry White were inducted into the Troop as Tenderfoot Scouts in an investiture ceremony conducted by the Scoutmaster. John Cook passed his Life rank before the Board of Review. The meeting was closed with the Scout Benediction.

Jeff Adams has been elected the new Assistant Patrol Leader

of the Beaver Patrol. Congratulations!

Next week the Flaming Arrow Patrol will be in charge of the Scoutcraft demonstration. Be prepared for a uniform inspection.

Has your patrol begun work on a pioneering model? There will be a prize for the best scale model of a bridge, tower, etc.

## Local Items

Mother's Day visitors of Mrs. Eva Heiser were Mrs. Martha Lakey of Fort Wayne, Miss Sue Slonaker of South Bend, Mr. and Mrs. Joe Heiser, and Mrs. Erma Slonaker, all of Plymouth.

Sunday dinner guests of Mr. and Mrs. Charles Ferrier and Tina were Mr. and Mrs. Harry

Hawkins of LaPorte, Mrs. Clark Ferrier, and Mr. and Mrs. Elza Hawkins.

Mr. and Mrs. Lewis E. Listenberg of Hammond were Sunday evening supper guests of Mr. and Mrs. Roy Listenberg in observance of Mother's Day.

Paul O. Overmyer of Akron, Ohio, and his fiancée, Miss Peggy Fleming, of Marion, Ohio, were weekend guests of the former's parents, Mr. and Mrs. Albert Overmyer, and family of Route 2, Culver.

Mrs. K. K. Kraning of West Shore Drive entertained the Mothers' Club of Kewanna Friday night at a Mothers' Day dinner at The Culver Inn. Afterwards the group attended the concert of the Cadet Chapel Choir of Culver Military Academy in the Memorial Chapel. There were 21 club

members who attended the affair.

## School Menu

By Anne Waite and Carolyn Reynolds  
(Beginning Monday, May 20)  
MONDAY: Sauer Kraut and hot dogs, mashed potatoes, celery sticks, fruit, bread, butter, and milk.

TUESDAY: Creamed chicken on biscuit, buttered carrots, cole slaw, ice cream cup, cookie, bread, butter and milk.

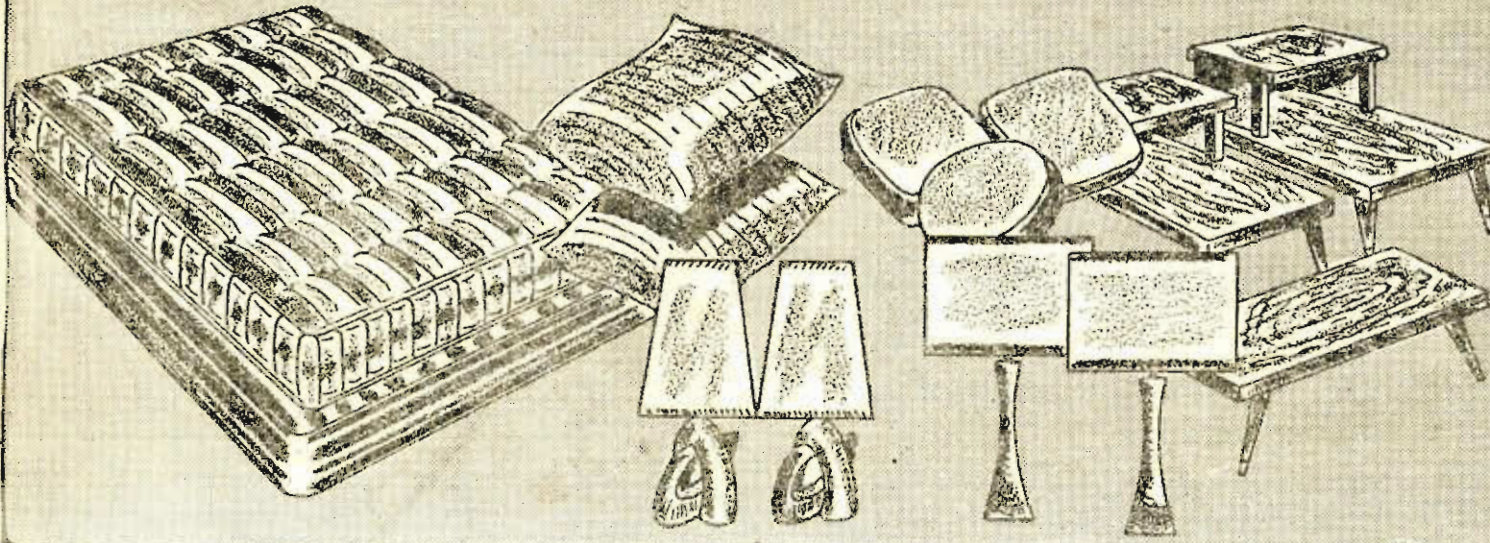
WEDNESDAY: Hamburger and noodles, lettuce salad, green beans, cherry cobbler, bread, butter, and milk.

THURSDAY: Barbecued hamburger, corn, macaroni salad, apple crisp with cheese, and milk.

# JOIN MFDW'S 3-ROOM CLUB PLAN TODAY

TAKE IMMEDIATE DELIVERY OR FREE LAYAWAY UP TO ONE FULL YEAR

## ALL EXTRAS INCLUDED!

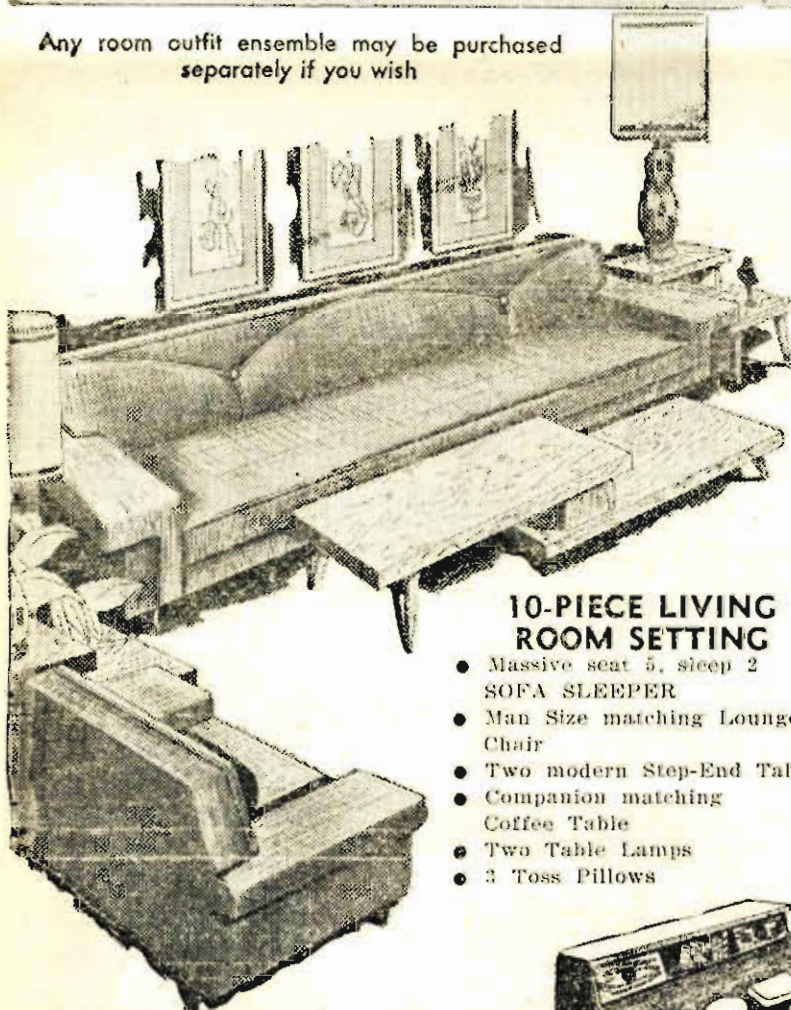


Any room outfit ensemble may be purchased separately if you wish

OPEN MONDAY, FRIDAY & SATURDAY  
9:30 A.M. to 8:30 P.M.  
TUESDAY & THURSDAY 'til 5:30 P.M.  
SUNDAY 1 P.M. to 5 P.M.  
Closed Wednesday

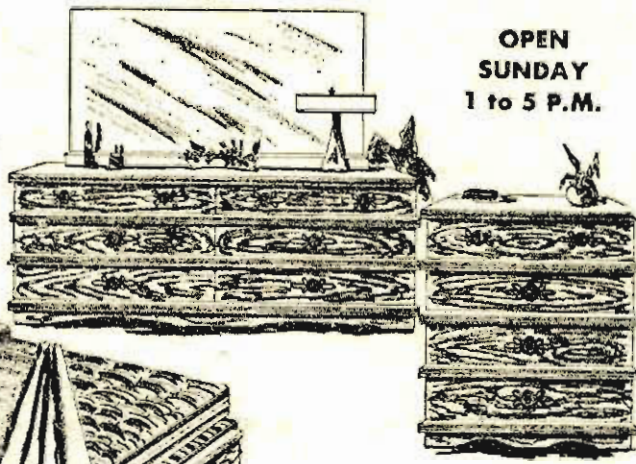
3-ROOM OUTFIT SPECIAL—ONE WEEK  
Regular \$598 Value — YOU SAVE \$140  
120 FABULOUS PIECES IN ALL

DISCOUNTED TO **\$448** ONLY AT MFDW



### 10-PIECE LIVING ROOM SETTING

- Massive seat 5, sleep 2 SOFA SLEEPER
- Man Size matching Lounge Chair
- Two modern Step-End Tables
- Companion matching Coffee Table
- Two Table Lamps
- 2 Toss Pillows



### 10-PIECE BEDROOM ENSEMBLE

- Mr. & Mrs. Double Dresser • Mirror
- Full Size Bookcase Bed • Chest of Drawers
- Quality Innerspring Mattress • Box Spring
- Two fluffy Bed Pillows • Two Vanity Lamps



### DINETTE INCLUDED

Popular heat, mar and stain resistant top table with extra table leaf and 4 matching upholstered dinette chairs! IF YOU BUY THIS WEEK—95-PC. BONUS SPECIAL INCLUDED!

**MFDW**  
MANUFACTURERS FURNITURE DISCOUNT WAREHOUSE

705 E. Jefferson  
**PLYMOUTH**  
Indiana  
Located on Rte. 30

**PLUS  
95  
PIECE  
BONUS**  
IF YOU BUY  
THIS WEEK

