

Monthly "FARM and HOME" Section With This Week's Edition

THE CULVER CITIZEN

ON LAKE MAXINKUCKEE • INDIANA'S MOST BEAUTIFUL LAKE

70TH YEAR, NO. 33

CULVER, INDIANA, WEDNESDAY, AUGUST 12, 1964

TEN CENTS

Proposed Culver Tax Rate Is Set At \$1.246

Culver's tax rate for the year 1965 will be \$1.246 per hundred dollar valuation, if it passes the county and state tax boards. There is a slight difference in the proposed rate from the one published in The Citizen last week. The error was made in the Motor Vehicle Highway refund amount as reported to the town clerk. The first figure was \$12,000. This was later corrected to the sum of \$11,300. This required the change of 2 cents levy in the street fund, changing it from 39 cents to 41 cents.

The Culver Town Board met in special session to make the necessary correction in the proposed budget and to pass on the new proposed levies.

The including of the Motor Vehicle Highway fund in the budget is required by law, since the new law governing the refund of gasoline taxes to the various taxing units, will be in effect starting Jan. 1, 1965. Since it is a refund to the town treasury from the state, it must be shown in the proposed budget as funds received.

The proposed tax rate of \$1.246 is broken down into the following funds: General Fund — \$0.766 needed to raise \$19,964.26; Street Fund — \$0.41 needed to raise \$10,780.41; Park Fund — \$0.07 needed to raise \$1,906.00. The town board recently approved the establishing of a park fund (park expense has been paid out of the General Fund in the past). The fund must be approved by the State Board of Accounts. The board received this approval a few days ago for the establishing of such a fund for 1965, but informed the board that such a fund could not be established for the remainder of 1964.

The proposed levy is \$0.046 higher than last year's levy. The increase is due to the town's share in paying for a new fire truck over a three year period. To meet the obligation needed for the fire truck, the levy had to be raised \$0.17. This would have made the proposed levy of the General Fund higher by \$0.124. By reducing other operations paid for out of the General Fund and Street Fund, the net increase was held to only \$0.046 higher than the proposed levy for 1964. After studying the proposed budget, the present town board has done a good job in keeping the proposed rate at a minimum.

For comparison, last year's proposed rates were: General Fund — \$0.73; Street Fund — \$0.47. There was no park fund.

SUMMER SCHOOL STUDENTS TO PARTICIPATE IN CHICAGO MUSIC FESTIVAL

The Culver Summer Schools Band and seven mounted Black Horse Troop members from Culver Military Academy will take part in the Chicagoland Music Festival, Saturday, Aug. 15.

The 85-member Summer Schools Band will take part in the Musieland Festival concert competition in the early afternoon against bands from Iowa, Indiana and Illinois. Trophies and plaques will be awarded.

The Band under the direction of John Kitts will march behind the Black Horse Troop and lead the Parade of Stars into Soldier Field at 7 that evening. Featured stars include Wayne King, Johnny Cash, Pete Fountain and others. Sixteen bands will be in the parade following the Culver Band.

Fred Ditmire Barn Destroyed By Fire

A large barn, located near the house on the Fred-Ditmire farm, located about five miles south of Culver, burned to the ground Monday evening, Aug. 10. The fire was started from an undetermined source at approximately 9:30 p.m. Mr. Ditmire was not home at the time but Mrs. Ditmire was, but did not know the barn was on fire until a passing motorist stopped and informed her the barn was on fire. The motorist helped remove livestock from the barn area.

The barn contained several thousand bales of hay and straw, which were a total loss. Insurance covers a part of the loss. Fire companies from Leiters Ford and Monterey were called, but were unable to save the barn. The house, which is very close to the barn, was hosed down to keep it from catching on fire. Mrs. Ditmire had just returned home from visiting relatives in Phoenix, Ariz., on Sunday.

HOSPITAL NOTES

Mrs. John S. Kittle of Indianapolis, a summer resident at 874 East Shore Drive, Culver, underwent a cataract operation in April following which she was hospitalized twice more because of two detached retinas. She has been unable to spend the summer here this year, but asks to be remembered to all her Culver friends and hopes to be here for a couple days in October.

Miss Esther Stahl was taken from Parkview Hospital in Plymouth on Saturday to the Fairview Nursing Home, sometimes called the Beam Nursing Home, located on State Road 31, about three miles south of Plymouth.

Neal Shock, well-known Burr Oak barber, was released Thursday, Aug. 6, to his Burr Oak home from Parkview Hospital in Plymouth where he had been confined since July 22 after suffering a mild heart attack. He is recuperating nicely and is able to have visitors.

Mrs. W. G. Gregory, State & College Streets, Culver, was admitted to Plymouth's Parkview Hospital Sunday afternoon where she underwent surgery Monday morning. She is recuperating satisfactorily.

Leroy D. Davis, Academy Road, Culver, returned home Friday after being a patient in the Veterans' Hospital at Fort Wayne for several weeks.

Miss Anne Ellsworth remains a patient at the Evanston Hospital at 2650 Ridge Ave., Evanston, Ill., and would enjoy hearing from her Culver friends.

Don G. Trone, 2324 East Shore Drive, proprietor of the Trone Shop in Culver, is still a patient in room 100 at Parkview Hospital in Plymouth, but is steadily improving.

SUBSCRIBE TO THE CITIZEN

MARKETS

Shelled Corn	1.14
Oats	.70
Ear Corn	1.12
Wheat	1.30
Soybeans	2.36

Steven Kelly To Get Scouting's Highest Award



STEVEN P. KELLY

Next Monday, Aug. 17, Steven P. Kelly, son of Mr. and Mrs. Norman Kelly, 310 College Ave., Culver, will receive Scouting's highest award — the Eagle Rank — at Court of Honor ceremonies in the Culver Methodist Church Fellowship Hall.

To earn this coveted medal, a Scout must pass a rigorous merit badge program, be active and dependable in Troop meetings and activities, serve actively as a Troop officer, carry out service projects, and show that he has done his best to live up to Scouting's ideals.

Steven, age 13, has been very active in local Boy Scout Troop 290 for two years. He has served as patrol leader and has earned the 1962 and 1963 Conservation Award, of Merit, 50-Miler Award, Mile Swim Award, Junior Leader Training Award, and a one-year perfect attendance pin. He has recently become a member of the Order of the Arrow — an honorary camping fraternity of the Boy Scouts of America.

The Court of Honor ceremonies will be preceded by a potluck supper beginning at 6:30 p.m. During the ceremonies a special charter presentation will be held, awards that have been earned by Scouts during the past five months will be given, and a program on the 1964 National Jamboree will be presented.

Area Eagle Scouts and Scoutmasters, former Scoutmasters of the Troop, and the public are cordially invited to attend.

Annual Jaycee Ball To Be Held August 29

The Annual Jaycee Ball will be held on Saturday evening, Aug. 29, at The Culver Inn, beginning at 9:00 p.m. It was announced this week by Joseph Anderlohr, chairman of the ball. At the same time, merchandise valued at \$450 will be given away. The prizes include a FM and AM Stereo set, compact TV set, and a movie camera and zoom projector.

Jaycee president Ron McKee states the proceeds of the ball will be used in further civic improvements. Last year the ball was attended by over 100 couples, who enjoyed the music of the Robert McFarland Combo. Due to public demand they will make a return engagement for the evening for the dancing and listening pleasure of those who will attend. A buffet supper will be served by the efficient and

Summer Schools Choir To Present Concert Sunday

The Culver Summer Schools Naval-Cavalry and Woodcraft Camp Choirs will present a choral concert Sunday, Aug. 16, at 4 p.m. in Culver Military Academy's Eugene C. Eppley Auditorium.

Choirmaster Thomas Richardson will conduct the 28-member Naval-Cavalry Choir and 60-member Woodcraft Choir in popular and religious selections.

Selections include "Alleluja," "Battle Hymn of the Republic," "Good Night Ladies," and songs from "My Fair Lady." The latter will be presented by a Naval Theater Ensemble of six midshipmen and six co-eds.

Milford Myhre and Madeline Ann Richardson will alternate accompanying on the piano.

The public is invited to attend without charge the annual choral recital, which replaces the usual band concert held on Sunday afternoons.



TO

FRIDAY, AUGUST 14

Barbara Ann Brucker
Louis Cooper

Mrs. Judith Currens

SATURDAY, AUGUST 15

Michael Baker

Mrs. Betty Thomas

Randy Wakefield

Roy D. Price

Gloria Bean

SUNDAY, AUGUST 16

James O'Connor

Naomi Rector

MONDAY, AUGUST 17

Mrs. Estelle Pletka

Kathy Ann Listenberger

TUESDAY, AUGUST 18

Ruth L. Overmyer

Betty Jane Voreis

Martha Joan (Busart) Shaw

Mrs. Zuleme Mueller

Billy Liette

WEDNESDAY, AUGUST 19

Charles Hodges

Pearl Spaid

Linda Stevens

THURSDAY, AUGUST 20

Lucinda Ricciardi

Maria Thomas

Dolores Busart Jones

HAPPY HOUR NURSERY TO OPEN SEPTEMBER 14

The Happy Hour Nursery School, which has been operated for the past 17 years in Culver by Mrs. Alice McCarthy, will open Monday, Sept. 14.

Registrations are now being taken for entry of pre-schoolers in the nursery school located at the McCarthy residence on Old State Road 17. Contact Mrs. McCarthy at VIKING 2-2270.

courteous staff of The Culver Inn, managed by Jim Kurz. Invitations will be extended to the surrounding Jaycee Clubs to attend.

Final arrangements for the Jaycee Ball are under the chairmanships of Kenneth Miller, prize tickets; Lance Overmyer, ball arrangements; and Eddie Amond, publicity. Ticket reservations may be made by calling Ron Tusing, ball ticket chairman at VI 2-2344.

Academy Summer Schools To Close Saturday, Aug. 22

Woodcrafters To Graduate Aug. 19

The eight-day Culver Summer Schools Commencement program will feature athletic, dramatic and military exhibitions. Commencement activities will last from Saturday, Aug. 15, to Saturday, Aug. 22.

A formal dance at 8 p.m. in the Recreation Building and the Woodcraft Camp boxing match finals at the Woodcraft Camp at 8:15 p.m. will highlight Aug. 15. Woodcraft pony and little league baseball will be played at 2:30 p.m. Sunday on the athletic field. A choral concert and garrison parade are scheduled at 4 and 6:30 p.m. respectively.

The final Council Fire will be held in the Council Ring Monday night at 8. Tuesday, a garrison parade is scheduled at 4 p.m. at the Riding Hall Terrace. A carillon recital by Milford Myhre, Academy carillonneur, will follow the parade.

Activities Wednesday, Aug. 19, start with Woodcraft graduation at 9:45 a.m. at the Riding Hall Terrace. A water ski exhibition will be held in front of the Culver Inn at 2 p.m. and at 8:15 the Theater School will stage "The Matchmaker" at the Eugene C. Eppley Auditorium.

The Navy drill team and Lancers — Cavalry drill team — will hold exhibitions starting at 10:50 a.m. Thursday at the Riding Hall Terrace. A polo game in the Riding Hall will start at 2 p.m. The summer's final Band Concert will be held in Eppley Auditorium at 8:30 p.m.

The Riding Hall will be the scene of a horse show at 10 a.m. and a squadron drill at 3:45 p.m. Friday, Aug. 21. The latter will be followed by a garrison parade. A SCUBA demonstration will be given at the swimming pool in the Recreation Building at 2:30 p.m. The traditional final ball will be held in the Recreation Building from 9 p.m. to 1 a.m.

The Naval School and School of Horsemanship Commencement exercises start at 8 p.m. Saturday, Aug. 22, officially bringing the Summer Schools to a close. Visitors are welcome at all events.

CULVER HIGH SCHOOL ATHLETES REPORT

MONDAY, AUGUST 17
Coach Eugene Crosley, athletic coach of Culver Community Schools, has issued the call for all boys of Culver High School who are planning on trying out for Fall or Winter sports for the 1964-65 school year to report to the Culver High School gym for their physical examinations at 9 a.m. Monday, Aug. 17.



THE WEATHER

Tuesday	91	65
Wednesday	84	61
Thursday	83	61
Friday	90	62
Saturday	76	48
Sunday	72	47
Monday	84	54
Tuesday		72

Society

CHURCH EVENTS
CLUB NEWS

of the MAXINKUCKEE AREA

Please Phone Or Deliver All Items Direct To
The Citizen — Viking 2-3377
DEADLINE: 1 P.M. Tuesday of Each Week

Engagements

Baker-Banks

Mr. George Baker, Culver, and Mrs. Alice Baker, 213 White Street, Culver, announce the engagement and approaching marriage of their daughter, Gloria Jean, to Randal E. Banks, son of Mr. and Mrs. Fred Banks, Tulip Road, Culver.

The wedding has been set for Sunday, Aug. 23, at Culver's Grace United Church of Christ.

§-§-§

Tri Kappa To Meet Monday, August 17

The regular monthly meeting of Tri Kappa Sorority will meet at 8 p.m. Monday, Aug. 17, at the home of Mrs. Walker Winslow, 1640 East Shore Drive.

Assisting hostesses will be Mrs. Richard Middleton, Miss Kathy Clyne, and Mrs. Norman A. Perry.

§-§-§

Miss Shari Croy Honored At Bridal Shower

The Misses Janet and Barbara Rosebaum entertained in their home on State Road 17 Tuesday evening at a surprise miscellaneous bridal shower honoring Miss Shari Croy, daughter of Mr. and Mrs. James Croy, 520 South Plymouth Street, Culver, whose marriage to Ray Groves will take place Saturday, Aug. 22, in the Culver Methodist Church.

The refreshment table was effectively decorated in the bride's colors and carried out the wedding shower theme.

After the bride-elect opened her lovely gifts, games and a social time were enjoyed.

Dainty refreshments were served to the 14 guests present to conclude the evening.

§-§-§

Rebekahs Hold Regular Meeting

The Culver Rebekahs met for their regular meeting in the Lions Den Tuesday evening, Aug. 11, with Mrs. Peter Onesti in the chair.

During the business session, a picnic was planned for Tuesday, Aug. 25, in the Culver Town Park with Burr Oak and the officers of district 23 as guests.

Mrs. June Wynn, district vice president, was present.

Anyone interested in Christmas cards may contact Mrs. Ellen Poppe, who has a beautiful assortment of cards in the interest of the Rebekahs.

Lodge was closed in due form.

§-§-§



FORT BUCKNER, OKINAWA — Army 1st Lt. Robert H. Blair, of Culver, received the Purple Heart, July 20, in ceremonies on Okinawa.

Lieutenant Blair received the award for wounds received in combat in Vietnam.

The 29-year-old lieutenant entered the Army in August 1952.

He was graduated from Upper Darby (Pa.) High School and Temple University, Philadelphia, Pa.

His parents, Mr. and Mrs. Russell Blair, live at Culver Military Academy.

FORT SHERIDAN, ILL. — Army Reserve Colonel John E. Maier, son of Mrs. Lena Maier, 341 Washington Ave., Medford, Wis., participated in a two-week

annual field training as commandant of the Army Area Intelligence School, Fort Sheridan, Ill., ending Aug. 8.

Colonel Maier is a mathematics instructor at Culver Military Academy. The colonel was graduated from Northwestern University, Evanston, Ill., in 1937 and received his M. A. degree from Lehigh University, Bethlehem, Pa., in 1941.

Maier and his wife, Kathryn, live in Culver.

James P. Sperry, son of Mr. and Mrs. James W. Sperry, 545 South Ohio Street, arrived home from Ansbach, Germany, Sunday, SP/4 James Sperry received his discharge after serving three years in the United States Army, 30 months of which he spent in Germany.

CULVER BOWLING ASSOCIATION TO MEET

The Culver Bowling Association, in conjunction with the Monday Night League and the Tuesday Night League, will hold their annual meeting on Monday, Aug. 17, at 7:30 p.m., in the Lions Den.

Election of officers and organization of leagues for the coming season will be the main order of business.

All association and league officers, team captains, and others interested in bowling this season are urged to attend.

If you cannot attend this meeting and would like to enter your name or team, contact Jim DeWitt at the bowling lanes.

GET LOST — The Indianapolis Star's columnist, Lowell Nussbaum, suggests: "Losing your temper is the best thing you can do with it, provided it stays lost."

SUBSCRIBE TO THE CITIZEN

New Arrivals

Mr. and Mrs. Jack C. Anderson Jr., 198 North Terrace, Culver, announce the birth of a daughter on Sunday, Aug. 9, at Parkview Hospital in Plymouth.

Mr. and Mrs. James McAfee, West 16th Road, Route 2, Culver, announce the birth of a 10 pound, 1 ounce daughter, Julie Bea, on Friday, Aug. 7, at the Bremen Community Hospital in Bremen.

Order Of Eastern Star Joint Inspection Set For Tuesday, August 25

The Plymouth, Argos, and Culver chapters of the Order of Eastern Star will go to Plymouth on Tuesday, Aug. 25, for joint inspection scheduled for 7:30 p.m. in the Masonic Hall.

A 6 p.m. supper at the Methodist Church will precede the inspection which will be conducted by Mrs. Peggy Scott of Oaktown, Ind., Worthy Grand Matron.

Baby dedication will convene at 7 p.m. and 50-year awards will be presented at 7:10 p.m.

All members are urged to attend.

§-§-§

Danny L. Thomas Marks Birthday

Thursday evening guests in the home of Mr. and Mrs. Eugene Thomas and children were Mr. and Mrs. Don Bruce and Mrs. Trula McKee.

The affair honored the birthday of Danny L. Thomas. After the guest of honor unwrapped his gifts, the group sang "Happy Birthday" to him. Birthday cake, ice cream, and coffee were served.

§-§-§

McKee Reunion Set For August 16

The annual McKee Reunion will be held Sunday, Aug. 16, in the West end of the Culver Town Park.

§-§-§

SUBSCRIBE TO THE CITIZEN

The Jacob Pedersens On Year's Visit To Native Norway

Mr. and Mrs. Jacob Pedersen, long-time residents of Culver, left Sunday, Aug. 9, from O'Hare Airport, Chicago, by jet plane for native Norway where they visit relatives for about a year. They also plan a visit to relatives in Denmark.

Mr. Pedersen, born in Stavanger, Norway, and Mrs. Pedersen, born in Bergen, Norway, came to Culver directly from Norway in 1930 with their three children, then 11, 9, and 3 1/2 years of age, and the former was employed as a painter at Culver Military Academy for 20 years.

The vacationing couple's daughter, Ruth, is now Mrs. Wallace Donovan of Anaheim, Calif. Their older son, Peter, resides in Bay Village, Ohio. Their younger son, Ralph, lives in Columbia, Mo. They have eight grandchildren.

Sunday morning, preceding the Pedersens' departure, they and their son, Ralph, and family, were breakfast guests of Mrs. E. Zechiel. Following breakfast, the group attended morning worship at Culver's Grace United Church.

At this service Rev. Harold W. Hohman, pastor of the church, unveiled an oil painting, "Christ Bearing The Cross", which was painted by Mr. Pedersen, and presented to Grace Church.

The Pedersens, accompanied by their sons, left immediately after the service for Chicago.

§-§-§

Watch out for school children, especially if they're driving.

MANOR MARKET

Groceries
Beverages - Meat

Maxinkuckee Landing
Phone Viking 2-2608

Sinclair
Gasoline and Oil

See Us For Your INSURANCE NEEDS!

- Auto
- Home
- Farm
- Commercial
- Boats
- Motors
- Bonds

- Personal Effects
- Accident & Health
- Travel
- Life
- Hall

STATE EXCHANGE INSURANCE AGENCY

State Exchange Bank Building — CULVER
Phone Viking 2-3321
Hampton Boswell, Manager
Robert Cultice, Agent F. Norman Witt, Solicitor
8th fl.

QUALITY GROCERS

Fine Groceries and Meats
At Low Prices

109 S. MAIN ST. LOCKER PLANT
CULVER PHONE VI 2-2071

Giant-size TIDE

..... box **59¢**

Fleischmann's Margarine 2 lbs. 69¢	Aunt Jane's Iceberg Dills 26-oz. jar 31¢	Del Monte Sauerkraut No. 303 10¢
--	---	---

CHERRY PIES

Mrs. Smith's Frozen Ready to Bake 8-in. **49¢**

Michigan No. 1 Potatoes 10-lb. bag 55¢	For Applesauce and Pies Duchess APPLES 3 lbs. 29¢ Drip or Reg. Folger's COFFEE lb. 75¢ Reynolds FOIL 25-ft. roll 27¢
--	--

BOILED HAM Oscar Mayer lb. 89¢	MINCED HAM or Old Fashioned Loaf Eckrich lb. 59¢
GROUND BEEF Very Lean 3 lbs. \$1.39	PORK CHOPS First Cut lb. 43¢
CANNED HAM Oscar Mayer 3-lb. \$2.49	

Also Fresh Dressed Fryers

CULVER CALENDAR FOR THE WEEK

Thursday, August 13—
 1:00 p.m.—Stitchery Club will meet with Mrs. Hattie Wickizer Krueger.
 6:30 p.m.—Golden Rule Builders' Class will meet at summer home of the Lewis Withams for potluck picnic supper.
 7:30 p.m.—Women's Guild meeting in Grace Church social rooms.
 8:00 p.m.—Business meeting of the American Legion at Legion Home. Installation of officers will be held at this time.

Monday, August 17—
 6:30 p.m.—Potluck picnic of the V.F.W. Ladies Auxiliary in Culver Town Park.
 6:30 p.m.—Potluck supper precedes Boy Scout Court of Honor at Methodist Church.
 7:30 p.m.—Order of Rainbow For Girls meet in Masonic Hall.
 8:00 p.m.—Tri Kappa will meet in the home of Mrs. Walker Winslow, 1640 East Shore Drive.

Wednesday, August 19—
 7:30 p.m.—Crescent Group of Grace Church will meet in the social rooms.

Tuesday, August 25—
 7:00 p.m.—Joint inspection of Culver, Plymouth, and Argos chapters of Order of Eastern Star at Plymouth.



EDITOR, Citizen:

It has recently come to my attention that various property owners on the shores of Lake Maxinkuckee are under the mistaken impression that disagreeable odors from the Culver sewage Disposal Plant are caused by the volume of sewage the Academy pumps into the town system.

The total volume of sewage pumped from the Academy is greatly reduced since the relocation of the Woodcraft Camp in 1963. In its present location, Woodcraft Camp sewage is handled in its own septic tanks and field tile system. None of it, therefore, comes to the Academy collection point and does not, therefore, go to the Disposal Plant. Any odors stemming from the Plant itself have nothing to do with the volume pumped from the Academy since that volume has been reduced within the past year. At the present time, the pumping of Academy sewage is controlled by a cycling device which operates approximately five minutes out of twenty.

Culver Military Academy pays equitable fees under a contractual arrangement to the town of Culver for the handling of Academy sewage. In fact, the town of Culver was able to procure the necessary funds through borrowing, to construct a Disposal Plant and sewer system only after securing the Academy's guarantee that the Academy would participate with the town of Culver in the sewer project. The Academy, therefore, has no greater or lesser responsibility for the operation of the Disposal Plant than any other customer. The capacity of the Disposal Plant is more than adequate to handle the total vol-

ume now being pumped from all sources. To the best of my knowledge, the Disposal Plant has never been operated at more than half its actual capacity.

We are, of course, sympathetic with residents who suffer from disagreeable odors, but we must protest any implication that the Academy is responsible. I suggest that those affected discuss the matter with the proper authorities of the town of Culver.

In this, as in all areas, the Academy tries at all times in a variety of ways to be a good citizen of the community and to do everything in its power to make Culver an ever better place in which we can live and work together in harmony. This purpose is not achieved, however, by the spreading of rumors based upon misinformation or the reaching of unjustified conclusions based upon insufficient evidence.

DELMAR T. SPIVEY
 Major General, USAF (Ret.)
 Superintendent

Culver Eagle Lodge To Meet On Thursday

A meeting of the newly organized Eagles Lodge will be held next Thursday, Aug. 13, at the Lions Den at 8 o'clock.

All charter members are requested to be present when the date for the institution of the new Aerie will be set.

Housing, that is procuring a permanent home, will be reported on by Paul Kaley, Frank Cihak and Robert Kyle, the committee who are surveying all possibilities for buying a suitable residence.

By-laws will be discussed and arrangements made for the installation Aug. 30, at which time Eagles lodges from throughout Northern Indiana will be represented. The installation will be held at the American Legion Post on Indiana 10 and an all-day affair is anticipated, according to Robert G. Hinkle, organizer, from Logansport.

TO RECEIVE DEGREES AT BALL STATE COMMENCEMENT

Among the 840 students receiving degrees from Ball State Teachers College at the August 21 commencement are three from Culver. The commencement ceremony will be at 5 p.m. on the south terrace of the Arts Building.

Dr. Elvis J. Stahr, Jr., president of Indiana University, will give the commencement address. Degrees will be conferred by

President John R. Emens of Ball State.

Ball State will confer 370 bachelor's degrees, 460 master's, two education specialist's, five Ed.D. and one Ph.D. to bring the total for June and August, 1964, to 2,014 degrees granted by the

college.

Culver students receiving degrees include the following:

Master of Arts in Education — Dale Richard Long and David Wrigley Smith.

Bachelor of Science in Education — Betty Jean Hosmer.

The Misses Judy Price, Diane Boots, and Suzanne Overmyer were in South Bend Saturday where they acted as pages for Marshall County during the Aug. 7-9 state convention of the Young Republicans which convened at the Pick Oliver Hotel in that city.

COFFEE SALE!



Eight O'clock 3 lb. bag **1.98**
 Reg. \$2.15

15c OFF — Plus A Free Measuring Spoon

RED CIRCLE 3 lb. bag **2.04** Save 15c Reg. \$2.19
 BOKAR 3 lb. bag **2.10** Save 15c Reg. \$2.25

CANTALOUPE

Serve with Ice Cream for a Delicious Combination

4 Jumbo Size for **69c**

Drip or Reg.

A&P 2-Lb. Coffee \$1.49

Dated Daily — Jane Parker

Fresh Cherry Pie 43c ea
 Each and Every Bite Is Bristling With Goodness

Buy Now and Save

French Dressing 21c
 Ann Page Brand Our Finest Quality 8-oz. btl.

Buy Now and Save — Iona Yellow Cling

Sliced Peaches 55c
 Or Halved Your Choice 2 29-oz. cans

New Every Day Low Price — Sultana

Fruit Cocktail 35c
 Stock Up and Save At This Low Price 30-oz. can

Banquet Dinners

Frozen Turkey, Chicken, Beef, Ham or Salisbury Steak 11-oz. dinner **39c**

Your Choice—Regular 49c

Strawberry Preserves

Or Raspberry — Ann Page 3 16-oz. jars **\$1.00**

30c OFF SALE!

SEAMLESS

NYLONS

2 Pair \$1.39 in pkg. Save 30c

Stretch Full Fashion 2 in pkg. 99c

60 Gauge, 15 Denier 2 in pkg. 99c

ALL PRICES EFFECTIVE THRU AUG. 15, 1964

Turkish BATH and MASSAGE
 For Ladies and Gentlemen
MRS. VERLY SMITH'S HEALTH FARM
 Phone VIKing 2-2287
 Culver, Route 2 (County Line Road, West of Burr Oak at Yellow River Bridge)

ERNIE'S FIRESIDE INN
 South Heaton St. — Phone 772-3746 — Knox, Indiana
 SERVING YOU SINCE 1938
STEAK — CHICKEN — SEA FOOD
BEER, WINE and LIQUOR
 AIR CONDITIONED 23-13n

LOCALS



John Cleveland and son, Peter, accompanied by Earl Mishler, The Citizen's sports writer, were in Chicago Friday where they attended the baseball game at Comiskey Park between the Chicago White Sox and Boston.

Sunday guests of Mr. and Mrs. Harold Hatten and Paul were Mr. and Mrs. L. J. Gibbons, and Timothy Gibbons of Rochester, Karen, John, and Brenda Gibbons of Plymouth, and Miss Karen Banks of Culver.

Mrs. Anna Reasoner of Hibbard was the houseguest of Mrs. Trula McKee from Friday evening until Tuesday. Callers in the McKee home on Saturday were Mr. and Mrs. Sam Griffith of Hammond; Mr. and Mrs. Donavon Overmyer and sons, Mr. and Mrs. Eugene Thomas and children, and Vern McKee and daughters, all of Culver. Sunday callers were Mr. and Mrs. Thomas E. Rick of Hammond, Mr. and Mrs. Robert Rich of Long Beach, Calif., Mrs. Margaret Rich of Knox, Mrs. Lotus Lowry of Hibbard, and Miss Ellen Day of Elkhart.

Tom Overmyer, son of Mr. and Mrs. Donavon Overmyer, 303 White Street, Culver, was one of the winners of the recent Plymouth Pilot-News carrier subscription contest and enjoyed an all-expense paid trip to Riverview amusement park in Chicago last Thursday afternoon.

Dr. and Mrs. Thomas Mead, Patty, Tommy, Linda, Bobby, and Martha, of Spearfish, S.D., were guests from Thursday until Tuesday of their Culver relatives, Miss Bess Easterday, Mr.

and Mrs. William Easterday, Mrs. Clark Ferrier, and Mr. and Mrs. Charles Ferrier and Tina. Family dinners in their honor were held Friday evening at the Charles Ferrier home, Saturday at the home of Miss Easterday, and Sunday at the William Easterdays. Other dinner guests of Miss Easterday on Saturday were Mr. and Mrs. Chester Easterday of Logansport.

Edna, Clara and Osie Stahl visited at the home of Mr. and Mrs. Clarence Meeker in Burnettsville, Ind., last Friday where they joined five other members of the Indiana Society of St. Petersburg, Fla. They also visited Mrs. Elizabeth Hubbell at Wesley Manor at Frankfort, Ind.

Wallace Scott of Chicago returned home Tuesday after visiting with his parents, Mr. and Mrs. Harold Scott. Mr. Scott will fly to New York on Thursday where he will be visiting friends for the next two weeks.

Mr. and Mrs. Joe Schweidler entertained over the past weekend for old Cleveland, Ohio, friends, Mr. and Mrs. Anton Zillich and Mr. and Mrs. Matthew King and son. They have also entertained this summer for their grandson, Joe Schweidler Jr. from Ft. Lauderdale, Fla.

COUNTY REPUBLICAN WOMEN'S CLUB TO MEET AT BOURBON

The Marshall County Republican Women's Club will meet at 7:30 p.m. on Friday, Aug. 21, at the School Cafeteria in Bourbon. Mrs. Marvin Heckaman of Bourbon will be in charge of the program and Mrs. Faith Shearer of Bourbon is the refreshment chairman.

Dr. Otis Bowen and Will Erwin will be the speakers for the meeting and all interested ladies are urged to attend.

RARE BIRD — A cattle egret, a water bird which has never before been reported in Indiana, was found recently in Franklin Township of Pulaski County. It has been turned over to Purdue University for its bird collection. The Pulaski County Journal says the bird, which is similar to a heron but much smaller, was caught by Gayland Bretiman. He reported the find to Kenneth Nettles, supervisor of the Winamac Fish and Game area, who in turn notified Prof. Russell Mumford of Purdue. Mumford made definite identification of the bird and said it was the first ever reported in Indiana although others had been found previously in Illinois and Ohio. The Purdue professor said the cattle egret derives its name from the fact that it is often seen feeding in fields where cattle are pastured and sometimes lights on the backs of cattle.

Subscribe To The Citizen

Every SUNDAY 9:15 A.M. WSBT 960 k.c.



NEW CHRISTIAN SERVICE RADIO STATION

CAR TROUBLE?

Don't Forget **CHARLEY'S LAKE SHORE GARAGE** Across From Town Park CULVER Phone VI 2-2500

30eow



Slender and Socially Correct

Rytex Princess Informals

PERSONALIZED WITH YOUR NAME

For invitations, thank you notes, gift enclosures and brief messages. Fine quality, paneled, white informals in the popular slender size with your name Rytex-Hylited in black ink in choice of styles shown. 100 Informals and 100 Envelopes.

\$2.99

plus tax

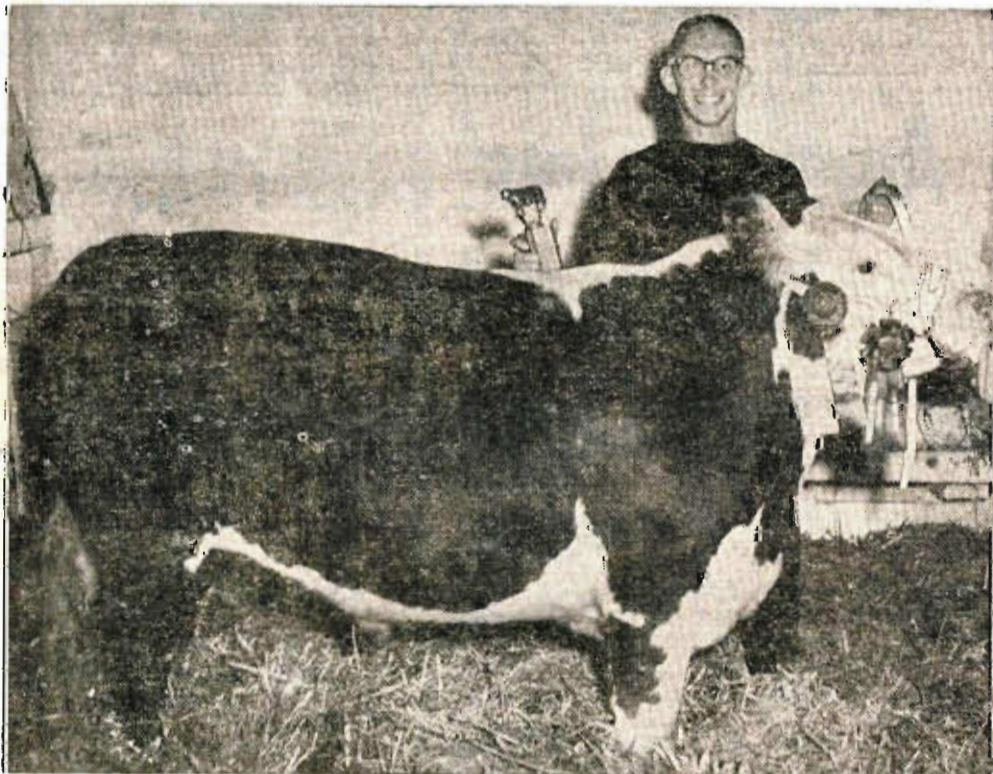
Plan ahead for Christmas Gifting. Order these lovely, personalized Rytex Informals now.

THE CULVER PRESS, INC.
Press Bldg. — CULVER

CONGRATULATIONS!



To The 4-H Beef, Swine and Lamb Winners AT THE MARSHALL COUNTY 4-H FAIR AT ARGOS



Dennis Redman
Owner and Feeder of the Reserve Grand Champion Beef
Purchased by Farmers State Bank LaPaz
61c per lb. 970 lbs.



Duane Kreighbaum
Owner and Feeder of the Grand Champion Swine
Purchased by The State Exchange Bank Argos — Culver
71c per lb. 190 lbs.

We are proud to have purchased the Grand Champion Swine, the Reserve Grand Champion Beef and other fine 4-H beef, swine and lambs from other 4-H exhibitors!

THE STATE EXCHANGE BANK
Culver — Indiana — Argos

STATE EXCHANGE FINANCE CO.
Culver — Indiana — Argos

FARMERS STATE BANK
LaPaz

MEMBER FEDERAL DEPOSIT INSURANCE CORPORATION

LaPaz 4-H'er Wins Grand Champion At County Fair

Last week's annual Marshall County 4-H Fair drew large crowds from opening day on Monday, Aug. 3, through the closing events on Saturday, Aug. 8, to the fairgrounds in Argos.

The weatherman cooperated with fair-goers and provided a rain-free week with extremely high temperatures for the beginning of the event and cooled it down to really chilly readings for the Saturday closing.

North Township's 17-year-old 4-H'er, Terry McCollough, son of Mr. and Mrs. Clyde McCollough of LaPaz, entered his 900-pound Black Angus steer, "Tubb," and won grand champion on his entry which sold, at 92 cents per pound, for \$828 to the LaPaz Grain Company.

Phil White, son of Mr. and Mrs. Jesse White of Culver, won reserve champion on his 201-pound barrow entry which sold at 72 cents per pound for \$144.72 to Transit-Mix Concrete Co. of Plymouth.

Other Union Township winners at the 1964 4-H Fair are listed below:

Steers, 1,000-1,099 pounds. Alan Mahler; Registered Angus Heifers, Alan Mahler, Victor Triplett, and Patty Overmyer.

Registered Hampshire Boar, George Hall Jr.; Registered Landrace gilt, Sheryl Fisher; 180-184-pound Barrows, Jack Lucas; 192-194-pound Barrows, Jill Odle; 199-201-pound Barrows, Phil White and Joyce Odle; 202-204-pound Barrows, Claudia DePoy; 220-224-pound Barrows, Alan Mahler; 225-230-pound Barrows, Alan Mahler.

Junior Calf, John Behmer; Senior Calf, John Behmer; Junior Yearling, John Behmer; Senior Yearling, John Behmer; Two-Year-Old Cow, John Behmer; Three-Year-Old Cow, Steve Ulery.

Forestry, division III, advanced, John Behmer.

Squirrel Season Opens Saturday, August 15

The open season for hunting squirrels in Indiana for the year 1964 will open Saturday, Aug. 15 and run until Tuesday, Oct. 13, both dates inclusive. No Sunday hunting.

Both fox and grey squirrels are included. There is no open season on black squirrels or flying squirrels. Daily bag limit is five squirrels, possession limit

five squirrels. The open season was set by discretionary order for the years 1962, 1963 and 1964.

ASCS COMMITTEE ELECTIONS TO BE HELD SEPTEMBER 7

The Chairman of the Marshall County Agricultural Stabilization and Conservation Committee, Carl Price put particular emphasis on the coming community elections of ASC Farmer-Committeemen in this county.

The elections will be held during the week of Sept. 7, 1964. The exact time and place will be announced in plenty of time to allow farmer-voters an opportunity to weigh their choice of the candidates.

Mr. Price said the elected Chairman of each Community Committee becomes the delegate to the ASC County Convention at which the County Committee is

elected. The Vice-Chairman of each Community Committee becomes the Alternate Delegate and the Regular Member is the Second Alternate Delegate to the Convention. The County Extension Agent, if not selected as secretary to the County Committee, is an ex officio member of the County Committee.

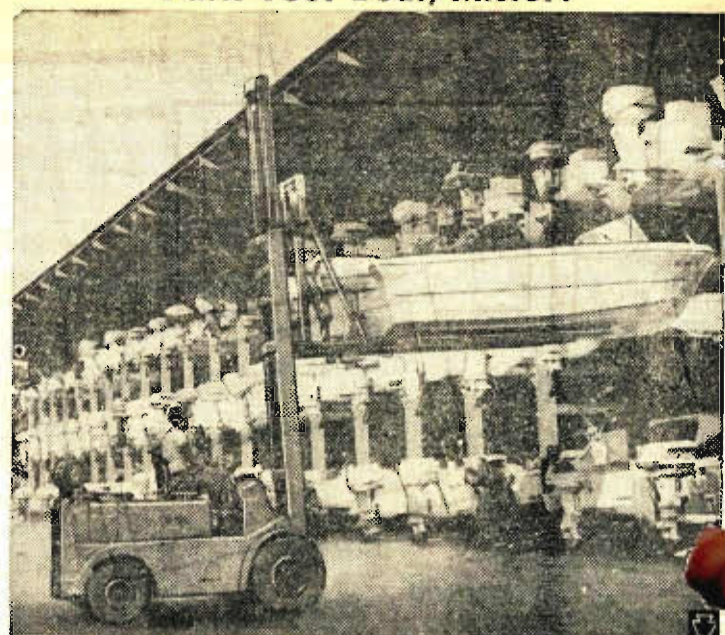
These County Committees are in charge of local administration of USDA acreage allotment and marketing quotas; price-support loans, purchase agreements and incentive payments; the ACP Program; the Land Use Adjustment Program; Sugar Program; Wool Program; Wheat Stabilization and Feed Grain Programs; and any other programs which the Secretary of Agriculture may designate.

The County ASC official said that Committee elections are an example of the democratic process in action.

Each eligible voter is encouraged to cast his vote for the persons of his choice to be members of his Community Committee.

FIRE DEPARTMENT calls should be made to Viking 2-2121. Note this number near your home phone.

Park Your Boat, Mister?



Here's the answer — a "pigeon hole" marina. Small-boat owners on Florida's west coast, near Sarasota, just cruise into a slip where a fork-lift truck picks up the boat, holds it while attendants hose off salt water, then slips it into a rack. Steel-framed shed, roofed with corrosion-resistant galvanized steel, provides high and dry — and storm-proof — haven for boat until owner returns, calls "My boat, please," and is under way within five minutes.

Classified Ads Give So Much For So Little

A Completely NEW concept in firearms engineering

REMINGTON nylon 66

22 AUTOLOADER

Remington DU PONT

"As Advertised in the Farm & Home Section"

HOLLAND'S HARDWARE

Argos

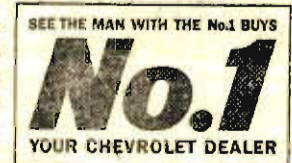


America's best sellers... Your best buys! Now at your Chevrolet Dealer's



Stands to reason: America's number one cars have got to be your best buys. Again this year that means your greatest buys in any size are at your Chevrolet dealer's one-stop shopping center. Take your pick. Perhaps the Jet-smooth Chevrolet—America's best selling automobile. Or maybe the fun-loving Chevy II so many young families go steady with these days.

Or possibly you'd prefer the carefree Corvair. So come ahead. Choose your favorite from among the 45 best ways in the world to go in the number one automobiles. But hurry. The way they're going, no telling how soon they'll all be gone. Better see your Chevrolet dealer before a thing like that happens!



Chevrolet-Chevle-Chevy II-Corvair and Corvette...
No.1 Cars, No.1 Values, No.1 Time to buy—Now at your dealer's

13-2065

GATES & CALHOUN CHEVROLET, INC.

ARGOS, INDIANA

it's good business to

SAVE HERE

For Long-Range Savings Plans . . .

Our dividends are high and keep growing with time! Let us serve you, too.

CURRENT RATE 4%

Marshall County Building & Loan

— Association —

201 N. MICHIGAN ST. PLYMOUTH

D. L. McKESSON, Secretary

33n

MUSICAL PROGRAM TO BE PRESENTED AT MONTEREY METHODIST CHURCH

A musical program of choral and organ music will be given in the Monterey Methodist Church, on Sunday, Aug. 30, at 7:30 p.m. The church organist, Miss June Ellen Zechiel, will play on the organ which has recently been installed in the church.

Also on the program will be the Group Ministry Choir, under the direction of Mrs. Kenneth Olin of Letters Ford. This group is made up of young people from Methodist Churches in the area. Guest organist will be Paul White of Culver. The public is invited to attend.

The Chicago Motor Club advises drivers always to pull completely off the highway when stopping to change a tire. If there isn't enough room on the shoulder drive on slowly. It's better to lose a tire than lose a life. At night, have a flare or flashlight handy to warn approaching traffic.

THURSDAY SPECIALS

1963 Volkswagon
4-dr., sedan, 23,000 actual miles, radio, four-in-the-floor shift, bumper guards, white walls, other extras. An immaculate car inside and out. Especially priced at . . . \$1395.00

1962 Pontiac Catalina
4-dr. sedan, radio, automatic trans., nearly new white walls. A beautifully cared for one owner car. Like new inside and out. Especially priced at \$1795.00

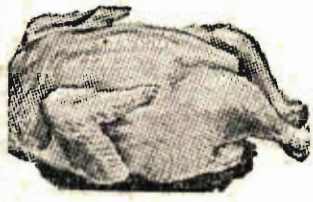
Bank Financing with Credit Life Insurance Included

Jeffers Motor Company, Inc.

EDMUND JEFFERS
MICHAEL JEFFERS
1601 W. Jefferson St.
PLYMOUTH
Phone 936-2331

33n

PARK 'N SHOP supermarket
Culver, Ind.



WHOLE FRYERS

Chicken
Legs, Breasts **lb. 49¢**

25 Lb. **25¢**

FRESH GROUND

HAMBURGER

3 Lbs.

\$ 1.00



MINUTE STEAKS

Just Right For That Quick Meal

10 each

MILK

Borden's Finest

3 Paper 1/2-gal. ctns.

\$ 1.00

SPECIALS DOLLAR DAY!!!

Del Monte

PEACHES



4 No. 2 1/2 cans

\$ 1.00

Sun Valley
Margarine

8 lbs. \$1.00

Del Monte
Peas

303 size
5 cans \$1.00

Red Label
Beverages

24-oz. size
6 btls. \$1.00

Facial Tissue
Puffs

4 pkgs. \$1.00

Soft Q
Toilet Tissue

10 rolls \$1.00

Chef Boy-ar-dee — with Cheese
Spaghetti

40-oz. size
3 cans \$1.00

Mott's
Applesauce

303 size
5 for \$1.00

Red Potatoes **10 lbs. 59c**

Del Monte 14-oz. btls.
Catsup 7 btls. \$1.00

Terry Kitchen
Towels 3 for \$1.00

MIX 'EM OR MATCH 'EM

Red Label CORN
Raggedy Ann RED KIDNEY BEANS

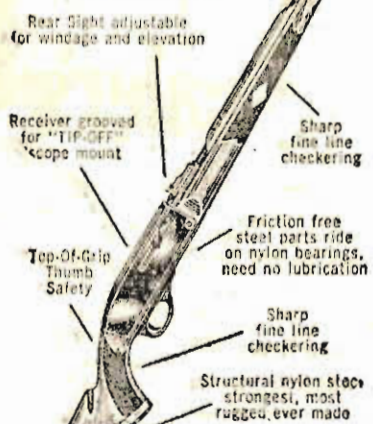
8 Cans **\$ 1.00**

Fresh Tomatoes **2 lbs. 29c**

Folger's 10-oz. jar
Instant Coffee \$1.39

Vita Boy Twin Pack
Potato Chips 59c

A Completely NEW concept in firearms engineering
REMINGTON nylon 66
22 AUTOLOADER



The Remington Nylon 66, 22 autoloader marks a great stride forward in rifle making. This new rifle is tops in dependability, accuracy and ruggedness; yet weighs only 4 lbs. This is the 22 autoloader you have been looking for. Come in and see one today!

Remington OUPONT

"As Advertised in the Farm & Home Section"

BUCHTEL'S HARDWARE
Plymouth

Culver Schools Officially Open Monday, Aug. 31

Bookstore Open Aug. 27-29

Grades 1 through 12 of the Culver Community Schools will officially open at 1 p.m. on Monday, August 31, 1964, at which time all students will complete registration and take care of other organizational matters. School buses will pick up boys and girls who live in the country in time to unload at school at 1 p.m. Students will not be kept at school over one hour on Aug. 31; however, full school in every sense will begin Tuesday morning, Sept. 1, 1964, at 8:10 a.m.

The school bookstore will be open from 8 a.m. through 4 p.m. on Thursday, Friday, and Saturday, Aug. 27, 28, and 29. Patrons are urged to come in at their convenience on one of the aforementioned dates and take care of their students' book rental fees.

Parents and/or students having questions about school in connection with grades 7 through 12 should call at the high school office or dial Viking 2-3275 any time between now and the opening of school. Those having questions dealing with kindergarten through grade 6 should call Elementary Principal Kaiser at Viking 2-3660 after Aug. 10, 1964.

Ham Am Golf Tourney Set For August 26

The Ham Am Invitational golf tournament will be held on Wednesday, Aug. 26, at 1 p.m. at the Maxinkuckee Country Club golf course. P.G.A. Rules, Improve lie, fairway only and shot gun start. Following the tournament, prizes, food and beverages will be presented between the hours of 5:30 and 8:30 p.m. at 2450 E. Shore Lane, Wildernuth and Wilkinson are the sponsors. This is important — register by mail or telephone on or before Aug. 20, phone VI 2-3037.

Team and Tee No. 1	Hdcp.	1
Russell Oliver		
Thomas Baker		5
Glenn Miller		3
Bob Lowe		4
Team and Tee No. 2	Hdcp.	1
Sam Medbourn		
Robert Florsheim		6
Kay Hilkert		5
Dick Buck		6
Team and Tee No. 3	Hdcp.	9
Dr. M. Baker		
Charles Maull		9
Oscar Miller		4
Dick Elliott		6
Team and Tee No. 4	Hdcp.	12
Col. Covington		
Capt. Bolton		16
John Kelly		14
Emory Baxter		16
Team and Tee No. 5	Hdcp.	12
W. F. Crise		
G. T. Graham		10
Gene Furry		12
Ed Becker		18
Team and Tee No. 7	Hdcp.	

Erv. Nelson	10
Dr. Crowe	18
Dick Howard	12
Dr. Babcock	16
Team and Tee No. 8	Hdcp.
Sam Strang	12
Jack Kowatch	14
Charles Lowe	8
Dick Martin	18
Team and Tee No. 9	Hdcp.
Charles Muehlhausen	24
Frank Osborn	24
Freda Hanna	20
M. J. Raub	20

Poplar Grove

By Mrs. Carroll Thompson
Phone Argos 802-3058
Attendance at Sunday services was 56. Representatives of the congregation attended a Group Ministry Council meeting at Mt. Hope Sunday afternoon.
Mr. and Mrs. John Strycker attended a family dinner at the home of Mr. and Mrs. Clifford Layman of Rural Route, Rochester, on Sunday.
Mr. and Mrs. Tom McPherron and family of Lakeville were Sunday dinner guests of Mr. and Mrs. Harry McPherron and Kathy.
Rev. and Mrs. W. Ray Kuhn and Carol attended funeral services in Akron on Saturday afternoon for a friend of many years, Frank Smith.
Mr. and Mrs. Eldon Cowen visited Mr. and Mrs. Alan South in Kokomo on Sunday afternoon. Mrs. South is recuperating satisfactorily at her home after having been dismissed on Saturday from Howard County Community Hospital where she had been a patient for the past week, suffering a serious kidney infection. Miss Charla Cowen, of South spent Thursday with her sister at the hospital.
Mr. and Mrs. Richard Hagan and family and Mr. and Mrs. Alton Frye of South Bend camped out at Turkey Run State Park over the weekend.
Mrs. Flossie Ashby of South

Bend and Archie Minx of Plymouth visited at the Frank Cowen home Sunday afternoon.
Mary Alice and Paula Zehner spent several days last week with their grandparents, Mr. and Mrs. Harold Zehner, near Plymouth.
The Oscar Zehners attended a picnic gathering of Mrs. Zehner's schoolmates at Rochester Park last Sunday and visited Mr. and Mrs. Dean Newcomb of Rochester in the evening.
Sunday guests of Mr. and Mrs. Ellis Clifton were Mr. and Mrs. Tom Sausman and family of Portage and Mr. and Mrs. Edgar Clifton and family of Lapaz. Dawn Sausman returned home after a two-week vacation here and Tom Sausman remained for a longer visit with relatives here.
Mr. and Mrs. William Lake showed Holy Land pictures at a meeting of the Gilead congregation on Sunday night.

FIRE DEPARTMENT calls should be made to Viking 2-2121. Note this number near your home phone.

**O. T. SMITH
TREE SURGERY
AND LANDSCAPING**
W918 Long Point

**THE EQUITABLE LIFE
ASSURANCE SOCIETY
OF THE UNITED STATES**
Represented by
MARION E. JONES
Culver, Indiana
Phone Viking 2-2731

You'll get fast and satisfactory service through the Want Ad section of The Culver Citizen.

A Completely NEW concept in firearms engineering
REMINGTON nylon 66
22 AUTOLOADER

Labels: Rear Sight adjustable for windage and elevation, Receiver grooved for "TIP-OFF" scope mount, Sharp fine line checkering, Friction free steel parts ride on nylon bearings, need no lubrication, Sharp fine line checkering, Structural nylon stock strongest, most rugged ever made, Top-Of-Grip Thumb Safety.

The Remington Nylon 66, 22 autoloader marks a great stride forward in rifle making. This new rifle is tops in dependability, accuracy and ruggedness; yet weighs only 4 lbs. This is the 22 autoloader you have been looking for. Come in and see one today!

Remington DU PONT

"As Advertised in the Farm & Home Section"

HANSEN'S SPORT SHOP
Culver

Swift's Premium Proten Beef Exclusive at Gretter's Food Market



- Swift's Premium Proten SIRLOIN TIP or RUMP ROAST lb. 89c
- Swift's Premium Proten CHUCK STEAK lb. 65c
- Fresh, All Beef GROUND BEEF 3 lbs. \$1.39
- Price's Country Kitchen WIENERS 2 lbs. 89c
- Plus btl. deposit Borden's MILK gal. jug 69c
- Libby's 46-oz. can TOMATO JUICE 29c
- Philadelphia 8-oz. pkg. CREAM CHEESE 29c
- Campbell's TOMATO SOUP can 10c
- Plain or Iodized 26-oz. size Morton's SALT 10c
- New Fashion 400 count FACIAL TISSUE 19c

GRETTER'S
"ACROSS FROM THE BANK"
Phone VI-2-2262
FOOD MART
Kustom Kut QUALITY MEATS
106 N. MAIN ST. CULVER

Notice To Taxpayers Of Tax Levies

In the matter of determining the tax rates for certain purposes by Union Township, Before the Township Advisory Board Marshall County, Indiana.
Notice is hereby given the taxpayers of Union Township, Marshall County, Indiana, that the proper officers of said township, at their regular meeting place, on the 25th day of August, 1964, will consider the following budget.

Township Fund	TOWNSHIP BUDGET CLASSIFICATION	Recreation Fund
Pay of Trustee, Rent, Clerical and Travel Expenses \$2,827.50	Other Justice of the Peace Expense 100.00	Total Recreation Fund \$1,600.00
Books, Stationery, Printing and Advertising 500.00	Other Civil Township Expenses 685.00	Township Poor Relief Fund
Care of Cemeteries 700.00	Total Township Fund \$4,852.50	B. Direct Relief
Justice of the Peace Salary and Fees 40.00	Fire Fighting Fund	3. Total Direct Relief \$2,000.00
	Fire Protection \$5,479.00	Total Township Poor Relief Fund \$2,000.00
	Library Fund	
	Total Library Fund \$4,954.00	
	ESTIMATE OF FUNDS TO BE RAISED	
FUNDS REQUIRED FOR EXPENSES TO DECEMBER 31st OF INCOMING YEAR		
1. Total Budget Estimate for incoming year, Jan. 1 to Dec. 31, 1965, inclusive	Township Fund	Fire Fighting Fund
2. Necessary Expenditures, July 1 to Dec. 31, present year, to be made from appropriations unexpended	\$4,852	\$5,479
5. Total Funds Required (Add lines 1 and 2)	3,470	1,750
FUNDS ON HAND AND TO BE RECEIVED FROM SOURCES OTHER THAN PROPOSED TAX LEVY	8,322	7,229
6. Actual Balance, June 30th of present year		2,600
7. Taxes to be collected, present year (December Settlement)	4,301	
8. Miscellaneous Revenue to be received, July 1 of present year to Dec. 31 of incoming year (Schedules on file in office of Township Trustee):	1,643	
a. Special Taxes (See Schedule)	108	899
b. All Other Revenue (See Schedule)	230	821
9. Total Funds (Add lines 6, 7, 8a and 8b)	6,282	1,770
10. NET AMOUNT REQUIRED TO BE RAISED FOR EXPENSE TO DEC. 31st OF INCOMING YEAR (Deduct line 9 from line 5)	2,040	830
11. Operating Balance (Not in excess of expenses from Jan. 1 to June 30, less miscellaneous revenue for same period)	2,000	900
12. AMOUNT TO BE RAISED BY TAX LEVY (Add lines 10 and 11)	4,040	830
Net Taxable Property — Union Township \$7,117,620; Town of Culver \$2,605,160; Total \$9,722,780		
Funds	Levy on Property	Amount to Be Raised
Township	\$.04	\$ 4,040
Fire Fighting (Township only)	.08	5,394
Library (Township only)	.07	4,954
Recreation	.01	830
Total	.20	\$15,218

COMPARATIVE STATEMENT OF TAXES COLLECTED AND TO BE COLLECTED

(Tabulate below amount to be collected in present year and amounts collected in each of the previous three years.)

Funds	Collected 1961	Collected 1962	Collected 1963	To be Collected 1964
Township	\$ 5,393	\$ 5,361	\$ 4,986	\$ 3,764
Fire Fighting (Township only)	1,096	1,089	2,154	1,423
Library (Township only)	4,386	4,921	5,000	4,954
Tuition	\$7,189	\$9,139	\$9,275	
Special School	\$7,565	\$8,646	\$9,827	
School Bond	19,786			
Civil Bond	19,786			
Recreation				
Total	\$207,201	\$199,156	\$198,242	\$12,102

Taxpayers appearing shall have a right to be heard thereon. After the tax levies have been determined and presented to the county auditor not later than two days prior to the second Monday in September, and the levy fixed by the county tax adjustment board, or on their failure so to do, by the county auditor, ten or more taxpayers feeling themselves aggrieved by such levies, may appeal to the state board of tax commissioners for further and final hearing thereon by filing a petition with the county auditor on or before the fourth Monday of September or on or before the tenth day after publication by the county auditor of tax rates charged, whichever date is later, and the state board of tax commissioners will fix a date for hearing in this county.

Dated August 3, 1964

GLENN OVERMYER, Trustee
Union Township
32-2n

**Do You Remember
'Way Back When?**

**Highlights of Culver News
of 10, 20, 30, 40, and 50
Years Ago This Week**

AUGUST 11, 1954—

Classes at Culver Public Schools will enroll on Tuesday, Aug. 31, with regular schedules getting underway on Thursday, Sept. 2.

Glen S. Tibbetts was re-elected president of the Culver-Union Township Community Chest at its annual meeting in the Library basement Friday evening.

The Lions Club's annual Kid-dies Day is all set for Thursday afternoon.

Mr. and Mrs. Dale Godlove of Monticello announce the engage-ment and forthcoming marriage of their daughter, Arlene, to Robert A. Simpson, son of Mrs. Ruth Simpson of Culver.

A goodly portion of Culver, in-cluding the Main Street business district, was in total darkness for nearly two hours late last Wednesday night during the elec-trical storm. Considerable dam-age was done during the storm, about 10 p.m., when lightning hit a tree and house on the Mr. and Mrs. Asa Walker property in Burr Oak.

AUGUST 9, 1944—

Mary Lou Buswell, daughter of Mrs. Lillie Buswell, was awarded a state scholarship to Indiana University. This replaced the special merit certificate she had received previously.

Leo Butler and Charles Cook have purchased the restaurant owned by Paul Snyder.

Dr. and Mrs. Milan D. Baker are the parents of a son, Milan Daniel Jr.

Donald Speyer, who was in-jured in a plane crash, has been transferred to a hospital in Aus-tralia.

David Mawhorter returned to Shephead Bay after spending a furlough with his parents, Mr. and Mrs. Rex Mawhorter.

Attracting attention in the annual art exhibition at the John Herron Art Institute in Indianap-olis is a finished over-mantel painting by Bill Kennedy, son of Col. and Mrs. W. R. Kennedy.

AUGUST 8, 1934—

The Naval School Band of the Culver Summer Schools gave a public concert in Vandalia Park.

A salute of 19 guns was fired in honor of Governor T. F. Green of Rhode Island when he visited the Culver Military Academy.

At a meeting of the Poplar

Grove Methodist Episcopal Church it was decided to rebuild the basement.

One of the loveliest weddings of the season occurred when Maxine Currens, daughter of Mr. and Mrs. J. W. Currens of Burr Oak, became the bride of Henry Bryan, son of Mr. and Mrs. W. Bryan of LaPorte.

The office of the Culver Grain & Coal Company has been more than doubled in size by the erection of an addition.

Col. F. L. Hunt, chairman of the Culver Military Academy faculty, spoke over Station WRBF at Indianapolis, giving a short history of the school and its poli-cies.

AUGUST 6, 1924—

Mr. and Mrs. Lester Young an-nounce the birth of a son, Ever-ett Evan.

Gen. L. R. Gignilliat is one of the men appointed by Governor Emmett Branch to make plans for the Mobilization Day program in Indiana.

Mr. and Mrs. Ed Cook an-nounce the birth of a son.

The Fred Cook garage has been appointed an official ser-vice station for the Hoosier Motor Club in this community.

Good progress is being made in the State Street paving pro-ject and it will soon be open for traffic.

The popular annual boat races of the local post of the American Legion were held the week of Aug. 6.

AUGUST 13, 1914—

The drought was partially broken on Monday afternoon by a 40-minute rainfall.

Mrs. Woodrow Wilson died in the White House Thursday after-noon after an illness of several months. She was 50 years old and when she went to the White House was in perfect health.

The huckleberry marshes west of Town, covering about 60 acres on the O'Connor and Keen land, have been burned off. It is the intention of the owners to use the ground next year for pepper-mint.

Arthur E. Castleman, Culver grain dealer, is making prepara-tions for the erection of an ele-vator at Ober.

Sparks from the 11:30 north-bound train Sunday set fire to the grass and tall weeds along the right-of-way adjoining Charles McFeely's place on Bun-ker Hill. No property damage was done.

Definite progress is being made on the public library.

Miss Pickerl of Bremen has been engaged to teach Latin and

English in the high school at \$75 per month. The faculty is now complete.

On Wednesday evening, Aug. 5, Miss Myrtle Medbourn of Cul-ver and Chester Zechiel of Indi-anapolis were united in marriage at the home of the bride's mother, Mrs. Mary E. Medbourn, by the brother of the bridegroom, Rev. E. E. Zechiel of Stoutsville, Ohio.

The seven-year-old son of Lou-is Overmyer several days ago suffered the loss of the thumb and three fingers of his left hand due to the explosion of a dynamite cartridge.

Raymond Mikesell has started construction of a five-room and basement bungalow on his lot north of the Christian Church, and hopes to have it ready for occupancy in six weeks.

Santa Anna

By Mrs. Guy Kepler

A shower was given for Mr. and Mrs. Lloyd Keefer of Oak Forest, Ill., at the church Sunday evening. He is the son of Mr. and Mrs. Emmett Keefer. The gift table was decorated with a pink umbrella with miniature umbrella's and streamers hang-ing from the ceiling. "In the Garden" was sung and they opened their gifts. Prayer was given by Norman Davis. Re-freshments were served from a table covered with a white cloth and centered with a bouquet of flowers by Mildred Goheen, Lucille Davis, Isabel Brockey, Ann Gibbons and Doris Kepler.

Mr. and Mrs. Guy Kepler, and Mr. and Mrs. Robert Kepler, Mark and Vaughn, had Sunday dinner with Mr. and Mrs. Ralph Masten and sons of Plymouth, Rural Route.

Mrs. Mollie Yates spent last



Open 6:50 P.M. Week Nights

WEDNESDAY, AUG. 12
Double Feature Program
In Color

**"The Evil Of
Frankenstein"**
Starring Peter Cushing
—Also Supernatural Thriller—
"Nightmare"

THURS., FRI., SAT.,
AUG. 13, 14, 15

"The Long Ships"
Technicolor - Technirama
Richard Widmark, Sidney Poitier, Russ Tamblyn, Rosanna Schiaffino, Oscar Homolka

SUN. to THURS.,
AUG. 16, 17, 18, 19, 20
Sunday 3, 5, 6:50, 8:45
Jerry Lewis as

"The Patsy"
Technicolor
Ina Balin, Everett Sloane,
Phil Harris, Keenan Wynn,
Peter Lorre, John Carradine

REES

PLYMOUTH
AIR CONDITIONED

WED. through SAT.
**"The Pink
Panther"**

In CinemaScope & Color
David Niven, Peter Sellers,
Capucine

One of the greatest comedies of the year! The phantom is after a priceless jewel!

Also Color Cartoon
Shows at 7 and 9:05 P.M.

SUN. through WED.
**"The Unsinkable
Molly Brown"**

In CinemaScope & Color
Debbie Reynolds, Harve Presnell, Ed Begley
A big and bouncy, happy and hil-arious musical. It's top-notch entertainment!

Sunday Shows at 2, 4:20,
6:40 and 9 P.M.
Mon. thru Wed., 7 & 9:20

week with Irene Cox and Mary Castleman in Argos.

Bobbie and Debbie McGriff of Rochester spent last week with Mr. and Mrs. Charles Goheen and Sonja. Mr. and Mrs. Goheen and Sonja and Mr. and Mrs. Everett Gibbons spent Sunday afternoon with Mrs. Harold Abbott in Roch-ester.

Attendance at Sunday School was 68. Rev. and Mrs. Starke and Kay are visiting Mrs. Starke's mother and sister in South Caro-lina. The W.S.C.S. will have a picnic at Lake Maxinkuckee next week on Thursday with meeting in the afternoon.

Mr. and Mrs. Harvey Gruna-walt attended the funeral of her brother, William Bolenbaugh, at LaPorte Monday.

Mr. and Mrs. Walter Starr of Culver recently took Mr. and Mrs. Walter Peer to visit their chil-dren, Mr. and Mrs. Ernest Starr, and sons at Bremen.

Mr. and Mrs. Ernest Rose of Battle Creek, Mich., were recent guests of Mr. and Mrs. Stephen Savage and Danny. Mrs. Wanda



PLYMOUTH, IND.

Open At 7:00
Shows Start At Dusk
Children under 12 Free

WED., THURS., FRI.,
AUG. 12, 13, 14
Both in Color

"Bye Bye Birdie"
Janet Leigh, Dick Van Dyke
**"The Courtship Of
Eddie's Father"**
Glenn Ford, Shirley Jones

SATURDAY, AUG. 15
3 Features

**"Man's Favorite
Sport"**
In Color
Rock Hudson, Paula Prentiss
**"Gidget Goes
To Rome"**
In Color
James Darren, Jessie Landis
"Jacktown"

SUN., MON., TUES.,
AUG. 16, 17, 18
In Color

"Diamond Head"
Charlton Heston, Yvette Mimieux
"Captain Sinbad"
In Color
Guy Williams, Heidi Brühl

TUESDAY, BUCK-A-CAR NIGHT
— All you can haul for \$1.00!

Mahler was also a guest. Mr. and Mrs. Savage and Mr. and Mrs. Rose took a trip through the Smoky Mountains, Renfro Val-ley, North Carolina, and Tennes-see. They visited Miss Ethel Sav-age at a Teacher's Home in Greenwood, Ind., and Mrs. Sav-age talked by phone to Miss Bea-trice Mitten, a former Argos teacher at Coal City, Ind.

Fatigue and drowsiness at the wheel are invitations to accidents, says the Chicago Motor Club. Fight fatigue in the following ways: Get plenty of rest before any trip so that you start re-freshed; stop for a break every two hours, even if it's just to get out of the car and stretch your legs; and stop for the day when you begin to have difficul-ty concentrating on your driving.

Watch out for school children, especially if they're driving.

Gayble Theatre

NORTH JUDSON
AIR CONDITIONED
Cooled by Refrigeration

ONE FULL WEEK!
WEDNESDAY, AUG. 12 to
TUESDAY, AUG. 18

Matinee Saturday and Sunday
with Stereophonic Sound

**THE NO. 1
ATTRACTION OF ALL TIME**

SPECIAL POPULAR PRICES!



Elizabeth Taylor, Richard
Burton, Rex Harrison

WED., THURS., FRI., SAT.,
AUG. 19, 20, 21, 22
Matinee Saturday at 2:30 Cont.



—2nd Feature—
In Technicolor

"Bullet Badman"
with Audie Murphy
Also Tom and Jerry
Color Cartoon Carnival

SALAD BAR

Friday, Aug. 14

11 A.M. to 1:30 P.M.

In Fellowship Hall

Of Methodist Church

For Reservations, Phone

Mrs. Earl Foreman,

Viking 2-3589

32-2n

DANCE

The Super Sports

Will Play For Dancing

From 8 to 11 P.M.,

Saturday, Aug. 15

At The Park 'N Shop

Parking Lot

Admission: 50c per person

33n

**ATTENTION
BOWLERS**

Men - Women

Mixed Leagues - Church Leagues

Individuals and teams — let's get organized for the coming season.

Lake Shore Lanes will complete remodeling in time for the coming bowling season. We know you will enjoy bowling at the new, up-to-date Lake Shore Lanes.

Mixed league bowling for Friday night available if enough couples are interested. Don't wait—Enter now!

**LAKE SHORE LANES
CULVER**

33n

**LIGHTNING DUDE RANCH
HORSE PALACE**

NOTHING LIKE IT ANYWHERE!
ADVENTURE and GOOD EATING!

Featuring
BROASTED CHICKEN

Carry Out
BUCKET OF CHICKEN
16 Pcs. - \$3.50

Carry Out
BOX OF CHICKEN
8 Pcs. - \$1.65

WHAT IS BROASTED CHICKEN?

Our Broaster subjects heat units instantaneously, sears the chicken, seals in all flavorful natural juices, and cooks through to the bone in six minutes. BROASTER CHICKEN is served to you golden brown, tender, and wonderfully palatable. It's the world's finest eatin' chicken!

In addition to Chicken, the Ranch Dining Room has a complete menu of Steaks, Fish, and Shrimp featured with an appetizing Relish Tray. We also have Half Chicken or 4 pieces for 95c. The Lightning Ranch is for Boys and Girls 11 to 16. We have been in operation for 19 years. We raise Quarter Horses - Give Riding Lessons - Have a Western Store. Every Thurs. afternoon we have a Playcamp from 1 to 4. Cost \$1.50.

The Palace is brand new and one of the largest and finest of its kinds in the U.S.A. It is just 2 feet shorter than the Chi-cago International Amphitheater. There is NOTHING LIKE IT ANYWHERE!

MR. and MRS. CED WHITE
BASS LAKE, IND. Phone 772-2441 & 772-2811
10 Miles West of Culver on State Road 10

30-4n

CULVER WORLD FAIR VISITORS CAN SEE

POSTOFFICE OF THE FUTURE

Visitors to the New York World's Fair from Culver have an unusual opportunity to see a post office of the future. Postmaster E. W. Mattox said today.

A carefully-chosen group of 80 employees from New York area post offices man the facility which handles all the Fair's mail and some from the Flushing, New York area. The outside mail is used to keep the highly mechanized devices operating at "full tilt."

The post office handles approximately 250,000 pieces of mail each day.

Postcards to friends and relatives back home are a big item. About 30,000 are mailed from the Fair each day. One third of these are addressed to persons overseas.

Foreign visitors have no trouble understanding U. S. postal operations. The facility has staff members who speak twenty languages.

Postmaster Mattox notes that residents of Culver who attend the Fair and wish to try out their foreign language ability can either talk with the multi-lingual window clerks or listen to a tape recorded presentation in the post office lobby which features individual earphones for those who speak Japanese, French, German, Italian and Spanish.

New equipment on hand includes an experimental Pitney-Bowes Centrifeed which spins envelopes rapidly around a wheel-like mechanism and places them upright on their longest side. They then move into a machine

which cancels stamps and postmarks envelopes at a rate of 500 letters a minute.

Letters are sorted to go all over the world by machines which position the mail so that the addresses are visible to an operator who sits in front of a keyboard similar to that on a typewriter. By pressing the correct buttons, 100 letters a minute are automatically directed to bins for 50 different destinations.

A larger device, the Burroughs sorter, drops letters and cards into 131 different bins at a rate of 58 letters per minute for each of the twelve operators.

The work area is surrounded by a ramp and gallery for visitors which is open from 11 a.m. to 6 p.m., seven days a week. Tape recorded vignettes explain the action on the work floor and describe the operations of each machine.

Outside the building, mail boxes from 21 countries serve as background for the red, white and blue box of the United States.

A prototype stainless steel mail box being tested as an eventual replacement for the standard box used for the past 40 years is located at one of the Fair's busiest intersections.

Postmaster Mattox suggests that Culver area visitors to the Fair express their comments on the new box by dropping a note addressed to the "Superintendent, World's Fair Post Office" through the modernistic mail slot. Postage is not necessary. If they wish, visitors may discuss their reactions with clerks at the post office building.

SUBSCRIBE TO THE CITIZEN

HOW TO KILL WASPS, HORNETS

Wasps and hornets often build paper-like nests under eaves of houses, in shrubs and other protected places, says Glen Lehker, Purdue University extension entomologist.

These insects can best be destroyed by spraying their nests with one per cent DDVP or with dieldrin or chlordane. Such mixtures are generally available for the control of roaches and other

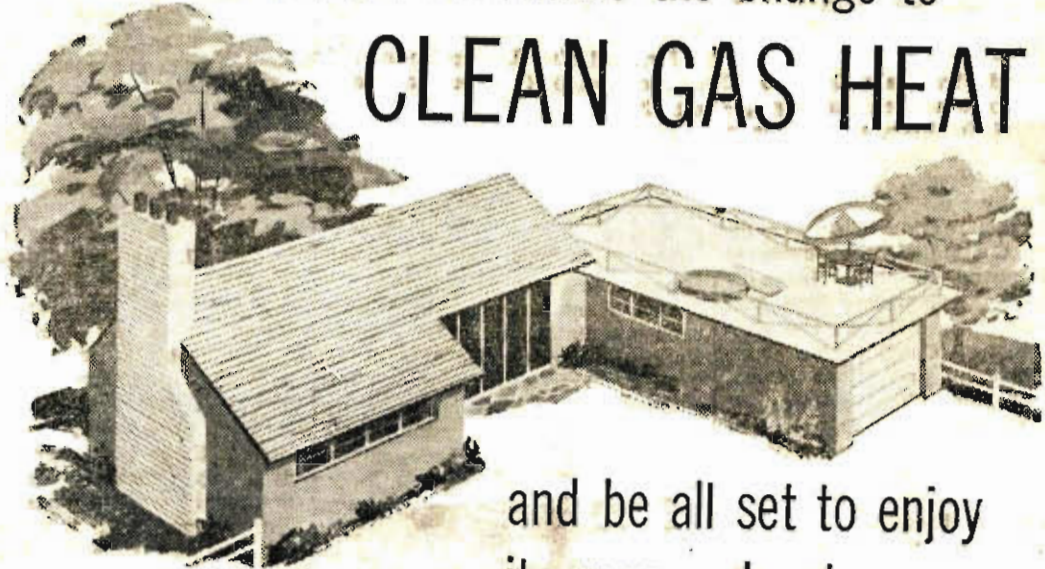
household insects. A 0.5 per cent dieldrin or two per cent chlordane spray can also be obtained by purchasing an emulsifiable concentrate of the insecticide and diluting with water to obtain the correct percentage. When treating hornets nests, apply the initial spray directly into the nest opening to kill the insects as they attempt to come out. The nest itself should then be soaked with the material. Use a sprayer large enough to do the job quickly

without getting too close to the nest.

Treatment is best made late in the evening when the bees are less active and when most of them are inside colony. To avoid stings, wear a bee veil and gloves and tie shirt sleeves and trouser legs to keep the insects from getting inside clothing.

The qualifications of a Culver Citizen Classified Ad are fast, profitable results. Call VI 2-3377.

NOW... make the change to CLEAN GAS HEAT



and be all set to enjoy its many advantages

NOW... when your furnace is shut down... is an excellent time to have automatic gas heating equipment installed in your home. By doing so now, you will avoid the rush when the new heating season starts.

Gas costs less... is fully automatic, too!

NORTHERN INDIANA Public Service COMPANY

Notice To Taxpayers Of Tax Levies

In the Matter of Determining the Tax Rates for Certain Purposes by the Library Board of Culver Before the Library Board Marshall County, Indiana.

Notice is hereby given the taxpayers of Culver, Marshall County, Indiana, that the proper legal Library Board officers of said municipality, at their regular meeting place, on the 31st day of August, 1964, at 8:00 PM, CDT, will consider the following budget:

BUDGET CLASSIFICATION

Library Operating Fund	
1. Services Personal	\$ 5,050.00
2. Services Contractual	1,950.00
3. Supplies	350.00
5. Current Charges	1,290.00
7. Properties	2,600.00
Total Library Operating Fund	\$11,240.00
Library Improvement Reserve Fund	
2. Services Contractual	\$ 1,000.00
7. Properties	700.00
Total Library Improvement Reserve Fund	\$ 1,700.00

(Complete Detail of Budget estimate may be seen in office of Library)

ESTIMATE OF FUNDS TO BE RAISED

FUNDS REQUIRED FOR EXPENSES TO DECEMBER 31st OF INCOMING YEAR:	Library Operating Fund	Improvement Reserve Fund
1. Total budget estimate for incoming year, Jan. 1 to Dec. 31, 1965, inclusive	\$11,240.00	\$1,700.00
2. Necessary expenditures, July 1 to Dec. 31 of present year to be made from appropriations unexpended	5,550.00	
5. Total Funds Required (Add lines 1 and 2)	16,790.00	1,700.00
FUNDS ON HAND AND TO BE RECEIVED FROM SOURCES OTHER THAN PROPOSED TAX LEVY:		
6. Actual balance, June 30th of present year	2,866.00	915.00
7. Taxes to be collected, present year (Dec. Settlement)	1,824.00	
8. Miscellaneous revenue to be received July 1 of present year to Dec. 31 of incoming year — Schedules on file:		
a. Special taxes	432.00	
b. All other revenue	8,306.00	800.00
9. Total Funds (Add lines 6, 7, 8a, and 8b)	13,428.00	1,715.00
10. NET AMOUNT REQUIRED TO BE RAISED FOR EXPENSE TO DEC. 31 OF INCOMING YEAR (Deduct line 9 from line 5)	3,362.00	0.00
11. Operating Balance (Not in excess of expenses from Jan. 1 to June 30, less misc. revenue for same period)	1,800.00	
12. AMOUNT TO BE RAISED BY TAX LEVY (Add lines 10 and 11)	5,162.00	0.00

PROPOSED LEVIES

Net Taxable Property	Levy on Property	Amount to Be Raised
\$2,605,160.00	.20	\$ 5,210.00

COMPARATIVE STATEMENT OF TAXES COLLECTED AND TO BE COLLECTED

(Tabulate below amount to be collected in present year and amounts collected in each of the previous three years.)

Funds	Collected 1961	Collected 1962	Collected 1963	To Be Collected 1964
Library Operating	\$3,775.00	\$4,002.00	\$4,741.00	\$4,168.00

After the tax levies have been determined, and presented to the county auditor not later than two days prior to the second Monday in September, and the levy fixed by the county tax adjustment board, or on their failure so to do, by the county auditor, ten or more taxpayers feeling themselves aggrieved by such levies, may appeal to the state board of tax commissioners for further and final hearing thereon by filing of petition with the auditor on or before the fourth Monday of September on or before the tenth day after publication by the county auditor of tax rate charged, whichever date is later, and the state board will fix a date for hearing in this county.

JESSE SIMS, President of Library Board
BETTY JEAN DAVIS, Secretary of Library Board
PETER D. TRONE, Treasurer of Library Board

Dated this 10th day of August, 1964.

Notice To Taxpayers Of Tax Levies

In the matter of determining the Tax Rates for School Purposes of the School Corporation of Culver Community Schools, Marshall County, Indiana Before the Board of School Trustees.

Notice is hereby given the taxpayers of Culver Community Schools, Marshall County, Indiana, that the proper legal officers of said school corporation at their regular meeting place on the 27th day of August 1964 will consider the following budget:

BUDGET CLASSIFICATION FOR SCHOOL CORPORATION

Special School Fund		I. Capital Outlay	
A. General Administration		I. Capital Outlay	2,500
1. Bd. School Tr. & Sec. Office	\$ 3,800	Total Special School Fund	\$227,460
2. Office of Supt. of Schools	13,300	Tuition Fund	
B. Instruction	19,150	B. Instruction	\$420,000
		F. Fixed Charges	4,000
		Total Tuition Fund	\$424,000
		ESTIMATE OF FUNDS TO BE RAISED	

FUNDS REQUIRED FOR EXPENSES TO DECEMBER 31st OF INCOMING YEAR:

1. Total Budget Estimate for ensuing year, Jan. 1 to Dec. 31, 1965, inclusive	Special Fund	Tuition Fund	School Bond Fund
\$227,460	\$227,460	\$424,000	\$222
2. Necessary Expenditures July 1 to Dec. 31, present year	\$3,336	147,124	
3. Additional Appropriations to be made July 1 to Dec. 31 of present year	4,058	33,947	
4. Outstanding Temporary Loans to be paid before Dec. 31 of present year — not included in line 2 or 3		20,000	
5. Total Estimated Expenditures (Add lines 1, 2, 3 and 4)	314,854	625,071	322

FUNDS ON HAND AND TO BE RECEIVED FROM SOURCES OTHER THAN PROPOSED TAX LEVY

6. Actual Balance June 30th of present year	7. Taxes to be collected, present year (December Settlement)	8. Miscellaneous Revenue to be received July 1st of present school year to Dec. 31st of next school year (Schedule on file in office of School Board)	9. Total Funds (Add lines 6, 7, 8a and 8b)	10. NET AMOUNT REQUIRED TO BE RAISED FOR EXPENSES TO DEC. 31st OF ENSUING YEAR (Deduct line 9 from line 5)	11. Operating balance (Not in excess of expenses from Jan. 1 to June 30, less miscellaneous revenue for the same period)	12. AMOUNT TO BE RAISED BY TAX LEVY (Add lines 10 and 11)
51,572	46,566		244,950	69,904	23,000	92,904

PROPOSED LEVIES

Net Taxable Property	Levy on Property	Amount to Be Raised
\$15,366,445	\$.60	\$ 9,219.87
	1.86	286,992
	\$2.46	\$379,896

COMPARATIVE STATEMENT OF TAXES COLLECTED AND TO BE COLLECTED

(Tabulate below amount to be collected in current year and amounts collected in each of the previous three years.)

Funds	Collected 1961	Collected 1962	Collected 1963	To be Collected 1964
Special				\$110,973
Tuition				170,260
Total				\$281,233

After the tax levies have been determined and presented to the county auditor not later than two days prior to the second Monday in September, and the levy fixed by the county tax adjustment board, or on their failure so to do, by the county auditor, ten or more taxpayers feeling themselves aggrieved by such levies, may appeal to the state board of tax commissioners for further and final hearing thereon by filing a petition with the county auditor on or before the fourth Monday of September or on or before the tenth day after publication by the county auditor of tax rates charged, whichever date is later, and the state board of tax commissioners will fix a date for hearing in this county.

Dated this 3d day of August 1964

CEDRIC WHITE
WALTER JOHNSON
WOODIE MCGLOTHIN
OSCAR WESSON
EVERETT DOWD
Board of School Trustees

Babson Discusses Continual Rise Of Labor Costs

Fringe Benefits Play Big Part

Babson Park, Mass. — Any man who owns a business, no matter what kind it is — store, service station, laundry, or factory — is going to see more of his money go for labor costs in the months ahead. This is fine, of course, for the employees, if the company is prospering and can manage to stay afloat; but it means more problems than ever for the owners.

No End In Sight

There are plenty of good solid reasons to expect the rise in labor costs to continue, and both business operators and their workers should be interested in keeping their company thriving under these conditions. I am talking as much to employees as I am to their bosses, because only through their joint efforts can jobs and incomes be safe for both. If even a small firm goes under, it means a further burden of unemployment, not only for the families involved but also for the whole community.

A look at union contracts in practically all of the important industries shows that the trend of both wages and fringe benefits is still strongly upward. I predict that for at least the rest of this year and next there will be no leveling off. Profits of nearly all the big corporations are high, and the union leaders are dead set on earning their keep by getting the biggest possible slice of the profits pie for their members. Remember, too, that it doesn't take long for the gains in unionized organizations to spread out to the workers in nonunion plants.

Bigger Gains To Come

Let me stress that there not only will be continued increases in pay rates and in fringe benefits, but that these increases may be bigger than they have been. Package raises (wages plus worker benefits) have been running about 3%-4%. Upcoming agreements may be stepped up closer to 5%. If so, this will be due not only to union hammerings for them, but also to the fact that management is always more willing to allow larger gains when business is booming and profits are sizable.

Fringe benefits will play a bigger part in labor costs over the period ahead. The unions highlight them in practically every bargaining session; and nonunion businesses are forced to give them serious consideration in order to attract high-grade people to work for them. I understand that most of those who go looking for work ask the personnel

directors about health programs, pensions, vacations, holidays, insurance, and such. Once in a while it seems as if an applicant is more interested in whether or not he will get a coffee break than he is in the basic wage rates or in the working hours he will have. There is no doubt about it — fringe benefits are here to stay; and both employers and employees should realize that such fringes are very costly — even though the cost may not be so immediately evident as that of wages.

Government Guidelines Ignored

I suppose nobody really wants to flout the government's plan to hold the line on wages and prices; but the fact is, they are doing it! Pay and price inflation has become such a habit in this country that with things going well it is easy to forget that serious difficulties can result if such inflation becomes "runaway." So, until government gets more excited about pay-price inflation, I look for labor leaders and businessmen to keep a careful eye on both wages and production costs.

As I have pointed out, the inching ahead of labor costs will mean a tighter squeeze on labor outlays for businesses all along the line. The only way that employers can avoid raising prices to hold profit margins is by lowering other costs. This means in-

creasing efficiency, installing time-saving and labor-saving equipment, and cutting out all possible waste. Even then, it will test the ingenuity of executives to come out ahead or at least hold their own. With high materials and service costs, still huge taxes, and the endless expenditures necessary to meet the bitter competition in promotion and sales, the very best and the highest-grade executives should be secured and encouraged.



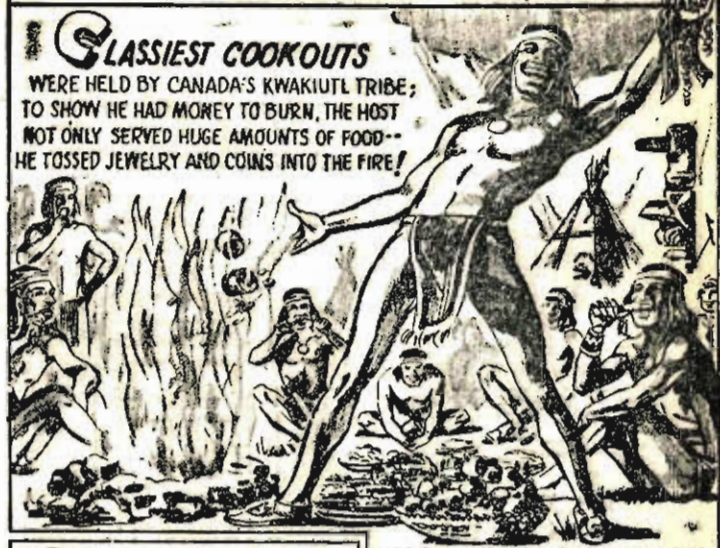
Ed Behnke, John Cook, Greg Easterday and Dave and Steve Kelly cleaned car windows as a good turn to promote Scouting at the monthly Scouter's Roundtable held at the C.M.A. Woodcraft Camp, last Thursday, Aug. 6. Dave and Steve also showed slides on the National Jamboree.

A campout was held at Indiana Dunes State Park over the past weekend. Ten Boy Scouts and two adult leaders attended.

The Troop met Monday, Aug. 10, with 11 Boy Scouts and one guest present, at the C.M.A. Woodcraft pier. The Beaver Patrol won the "freestyle relay" and the Beaver and Panther Patrols each won an "Air Mattress relay" contest.

An Eagle Court of Honor will be held at the Methodist Church on Monday, Aug. 17, beginning

IT'S A FACT!.....by Thompson



WORLD'S FIRST BARBECUES

WERE WOODEN FRAMEWORKS ON WHICH WHOLE OXEN WERE GRILLED OVER A FIRE! SPANISH EXPLORERS SAW INDIANS USING THE DEVICES-- LATER APPLIED THE WORD "BARBECUE" TO THE ROASTED OX!



BIGGEST BARBECUE ENTHUSIASTS

ARE THE AMERICAN FAMILIES WHO WILL BUY \$750 MILLION WORTH OF FOOD AND SPICES FOR OUTDOOR MEALS THIS YEAR. TO ADD FLAVOR TO BARBECUE MEATS KITCHEN BOUQUET IS FAVORED BY THE 81% OF AMERICAN FAMILIES WHO CELEBRATE NATIONAL BARBECUE MONTH (JUNE 1-30) G

with a potluck supper at 6:30 p.m. All awards and honors earned during the past five months will be presented.

Mr. and Mrs. Roy Listenberg were weekend guests of Mr. and Mrs. George Brand and family of Lafayette.



A Completely NEW concept in firearms engineering
REMINGTON nylon 66
22 AUTOLOADER

Rear Sight adjustable for windage and elevation

Receiver grooved for "TIP-OFF" scope mount

Sharp fine line checkering

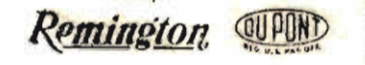
Friction free steel parts ride on nylon bearings, need no lubricator

Top-Of-Grip Thumb Safety

Sharp fine line checkering

Structural nylon stock strongest, most rugged ever made

The Remington Nylon 66, 22 autoloader marks a great stride forward in rifle making. This new rifle is tops in dependability, accuracy and ruggedness; yet weighs only 4 lbs. This is the 22 autoloader you have been looking for. Come in and see one today!



"As Advertised in the Farm & Home Section"

BAILEY'S HARDWARE
Rochester



... make a duplicate list of your stock certificates, bonds, deeds, insurance policies and other valuable papers. Then place them (and one copy of the list) in an economical safe deposit box here... where they'll be safe from fire, theft, flood, misplacement and prying eyes!

Rent your Safe Deposit Box here today!

We Pay 4% On Time Certificates Of Deposit — 3½% On Savings Accounts

Member of the Federal Deposit Insurance Corporation

Our Drive-In Window Is Open Continuously From 8 A.M. to 5 P.M., Including The Noon Hour



THE STATE EXCHANGE BANK
CULVER — Indiana — ARGOS

FOR BETTER BOTTLED GAS SERVICE
Call For
Thermogas Company
Formerly Liquid Flame
Bottles and Tankwagon
THERMOGAS COMPANY
113 W. LaPorte St. Phone 936-2725
Plymouth, Indiana

Sunday guests of Mr. and Mrs. Arthur Prosser, Laurel and Velda, were Mr. and Mrs. John Mattiya and family of Markham, Ill., Mr. and Mrs. Cecil Guess and daughters of Harvey, Ill., Mr. and Mrs. Tony Warner and sons of South Bend, Mr. and Mrs. Charles Garrett and Tami Rae of Gary, and Mrs. Lewis Jones of Route 2, Culver.

Mrs. Lowell Ayres and Victor of Plymouth were Saturday guests of Mrs. Lloyd Maxson and Doris.

Mr. and Mrs. F. E. Carrothers were Sunday dinner guests of Mr. and Mrs. Frank Miller at La-

Luncheon guests on Wednesday of Mr. and Mrs. Ralph Condon were Mr. and Mrs. Joe Hartman and daughters, Theresa and Debbie, of Mesa, Ariz.

Sunday evening lunch guests of Mr. and Mrs. Floyd Carrothers were Mr. and Mrs. T. J. Pimper of Route 1, Plymouth. Mrs. W. D. Crossgrove and Cindy called later in the evening.

Sunday afternoon and evening dinner guests of Mr. and Mrs. Wayne Bishop were Mrs. Maggie Woolington, Mrs. R. D. Rogers, Gary and Mark, Mr. and Mrs. Arthur Woolington and sons, and Miss Tena Himes of Plymouth.

Miss Hermena Schipplock of Lakeville and Miss Mary Edle and Marion Schipplock of South Bend were weekend guests of their mother, Mrs. Marie Schipplock.

Mrs. Marie Schipplock returned home Saturday from Southern Illinois where she has been attending Pentecostal Camp meeting the past six weeks.

HISTORICAL DAY — The Lebanon Reporter recently published an account of the first appearance of an automobile on the streets of the Boone County seat. The date was May 23, 1900. The car was a steam-powered Locomobile. It was driven to Lebanon from Attica by its owner, Harry L. Kramer, an Attica businessman. The Reporter's account of the pioneer car said Kramer invited several Lebanon citizens to take "spins" with him around the business district "at breath-taking speeds of 12 to 15 miles an hours."

BRIGHT IDEAS

FOR A SAFE HOME



You can help lower the high percentage of home accidents with properly located lighting. A three-way control switch governing lights at the top and bottom of stairs lessens the danger of tripping on your stairway.

To make the front stairs of your home safe for family and friends, install Sylvania incandescent lamps in porch or stoop fixtures on both sides of your front door.



When working in your shop, be sure that your lighting covers all of your work surface. Supplement a large fluorescent fixture with a 150 watt flood in an adjustable socket for close, exacting work.



Burr Oak

By Mrs. Floyd Carrothers
Phone VIKING 2-2028

Sunday evening dinner guests of Mrs. Iris Hyland and Debbie were Mr. and Mrs. W. D. Crossgrove and Cindy of Plymouth, Mrs. F. E. Carrothers, and Buster Goble of Knox.

Mr. and Mrs. Wallace King and daughter Sharon visited

Wednesday and Thursday with Mr. and Mrs. Al. Heeb at Louisville, Ky.

Mr. and Mrs. Melvin Shriver of Mishawaka were Sunday evening supper guests in the home of their daughter, Mrs. Margaret McDonald, and family.

Sunday evening dinner guests of Mrs. Rossie Moore and son Robert were Mr. and Mrs. Virgil Bennett, Linda, Eddie and Virgil

HAVE A BALL!

Second Annual
CULVER JAYCEE BALL
The Culver Inn
on Lake Maxinkuckee
Buffet
Jaycee Raffle Drawing
Saturday, Aug. 29
9 P.M. to ?
Robert McFarland Combo
Donation \$5.00 a couple

Professional Directory

PHYSICIANS

REED MEDICAL CENTER
121 College Avenue
Office Phone — VIKING 2-2591
DONALD W. REED, M.D.
General Medicine
Office Hours:
10-11 a.m. 2-5 p.m. Monday,
Tuesday, Thursday & Friday
Saturday, 10 a.m.-12 noon
Residence Phone VIKING 2-2110
SPECIALISTS' CONSULTATION
READILY AVAILABLE

R. HIPPENSTEEL, M.D.
Infants and Childrer
Office Hours:
By appointment only
10-12 a.m. except Thursdays
Residence Phone VIKING 2-3064

JOSEPH D. HOWARD, M.D.
PHYSICIAN
General Medicine & Obstetrics
Office: 917 Lake Shore Drive
Office Hours By Appointment
Mon.; 1-5, 7-9 P.M.
Tues., Thurs. & Fri.: 1-6 P.M.
Sat.: 9-12 A.M.
Office & Residence Phone
VIKING 2-9550

OSTEOPATHIC MEDICAL PHYSICIANS

E. D. POWERS, D.O.
PHYSICIAN
General Practice
and Rectal Diseases
Office Hours by Appointment
Culver Clinic - 222 N. Ohio
Office Phone VIKING 2-3351
Residence Phone VIKING 2-2710

DENTISTS

TROY L. BABCOCK, D.D.S.
DENTIST
Office Hours by Appointment
Phone VIKING 2-2463
2388 East Shore Drive

JOHN W. OLDHAM, D.D.S.
DENTIST
Office Hours by Appointment
Phone VIKING 2-2118
Northern Indiana Public Service
Company Building

OPTOMETRISTS

DR. F. L. BABCOCK
OPTOMETRIST
Phone VIKING 2-3372
Office Hours:
9 a.m. to 5 p.m.
Closed Wednesdays
203 South Main Street

COMPLETE
Optical Service
Eyes Examined
OPTOMETRIST
GLASSES
CONTACT LENSES
Acousticon Hearing Aid
Glasses
DR. HERSCHELL R. COIL
102 W. Main - SYRACUSE
Call 457-3712 for Appointment

PODIATRIST

RICHARD J. DIETER, D.S.C.
Foot Orthopedics
Surgical Chiropody and
FOOT SPECIALIST
Thursdays by Appointment

9x12' Axminster Rugs . . \$49.95

9x12' Rug Pads \$10.00

Your dollar buys more at the

ARGOS FURNITURE STORE

Owned and Operated by Fred and Mary Steffy

Mon. thru Fri. 8 to 5:30 — Sat. 8 to 8:30

We Deliver PHONE 892-5235 We Deliver

33n

BACK-TO-SCHOOL FEATURE



YES!
we feature . . .

CONTINENTALS
in wash and wear

Waist Sizes 26 to 38
\$4.98 and \$5.98

WHITE LEVI'S SLIMFITS
and PRE-SHRUNK
DENIM

Waist Sizes 26 to 44
\$4.49

Lauer's "of course"
MEN'S and BOY'S APPAREL

Plymouth

33n

CLOSING OUT 1964 MODELS

TRADE NOW
for

Chrysler — Plymouth — Valiant
Barracuda — 4-drs. — Wagons

HIGHEST TRADES AT

HATTEN MOTOR SALES

Across from High School

Call VIKING 2-2727 CULVER

33n



CHURCH NEWS



TEMPLE OF FAITH MISSION
Rev. B. R. Cross Pastor
Located west of State Road 35 on State Road 10 to California Township School and one mile north.

Sunday School 9:30 a.m.
Morning Service 10:30 a.m.
Song Service 7:00 p.m.
Evening Service 7:30 p.m.
Fourth Sunday evening of each month there will be a full evening of spiritual singing and special music with vocal and instrumental numbers.
To those who do not attend elsewhere. We welcome you.

Methodist Group Ministry

(A fellowship of Methodist Churches in the area south and east of Lake Maxinkuckee.)

FULTON COUNTY PARISH

Theodore R. Roberts, Pastor
MONTEREY METHODIST
John Ringen, Superintendent
Worship at 9:15 a.m.
Church School at 10:05 a.m.

DELONG METHODIST

Elizabeth Hoover, Superintendent
Church School at 9:15 a.m.
Worship at 10:15 a.m.

LEITERS FORD METHODIST

Ralph Stayton, Superintendent
Church School at 10 a.m.
Worship at 11:15 a.m.

CULVER CIRCUIT

Rev. O. Leon Stark, Minister
MAXINKUCKEE METHODIST
Worship at 9:30 a.m. every Sunday.

Church School at 10:15 a.m.

MT. HOPE METHODIST

Paul E. Winn, Superintendent
Church School at 10 a.m.
Worship at 11 a.m. every 2nd and 4th Sunday.

SANTA ANNA METHODIST

Phillip Peer, Superintendent
Church School at 10 a.m.
Worship at 11 a.m. every 1st and 3rd Sunday.

POPLAR GROVE CHARGE

W. Ray Kuhn, Pastor
William Lake, Superintendent
Church School at 10 a.m.
Worship at 10:45 each Sunday.

SAND HILL CIRCUIT

SAND HILL METHODIST
Russell Good, Pastor
Glen Hart, Superintendent
Church School at 10 a.m.
Worship at 11 a.m. on 1st and 3rd Sundays.

GILEAD METHODIST

Grover Shaffer, Superintendent
Church School at 10 a.m.
Worship at 11 a.m. on 2nd and 4th Sundays.

RICHLAND CENTER CIRCUIT

Calvin McCutcheon, Pastor
RICHLAND CENTER METHODIST
Herbert Warner, Superintendent
Sunday School at 9:30 a.m. on 1st and 3rd Sundays, (10:30 on 2nd and 4th Sundays).

Worship at 9:30 a.m. on 2nd and 4th Sundays, (10:45 on 1st and 3rd Sundays).

M.Y.F. at 7:00 p.m.
Prayer and Bible Study on Thursday at 8:00 p.m.

BURTON METHODIST

William Belcher, Superintendent
Sunday School at 9:30 a.m. on 2nd and 4th Sundays, (10:30 on 1st and 3rd).

Worship at 9:30 a.m. on 1st and 3rd Sundays, (10:45 on 2nd and 4th Sun.)

M.Y.F. at 7:00 p.m.
Evening Worship at 7:30 on 2nd and 4th Sundays.

Prayer and Bible Study on Wednesdays at 8 p.m.

PBETTY LAKE EVANGELICAL UNITED BRETHREN CHURCH

Thomas Rough, Pastor
Frank Bair Jr., Superintendent
Morning Worship 9:15 a.m.
Sunday School 10:00 a.m.
Evening Worship 7:00 p.m. on alternate Sundays.
Prayer meeting 7:00 p.m. Wednesday.

SAINT ANN'S CATHOLIC CHURCH, MONTEREY

Rev. Edward Matyszak Pastor
Sunday Masses: 7:30 and 9:30 a.m.
Weekday Masses: 8:05 (Winter) 7:00 (Summer).
Holy day of Obligation: 6:30 a.m. Evening as announced on Parish bulletin.
Holy Communion distributed each weekday at 7:00.
Confession: Saturday 4 to 5 p.m. and 7 to 9 p.m. Before Sunday Masses.

ROLLINS CHAPEL

Rev. Hiram H. Walker, B.D.
Afternoon Worship, 3:30 p.m.
1st and 3rd Sundays each month.

CULVER METHODIST CHURCH
School-Lewis Streets
Dr. Ronald C. Williams, Minister
Mrs. Ted Strang, Director
Christian Education
9:30 A.M.—Church School
10:40 A.M.—Morning Worship
4:30 P.M.—Junior MYF (1st and 3rd Sundays)
5:30 P.M.—Senior MYF (2nd and 4th Sundays)

CULVER BIBLE CHURCH
718 South Main Street
Edwin B. Cockrill, Pastor
Sunday School 10:00 a.m.
Classes for all ages.
Morning Worship 11:00 a.m.
Training Hour 6:30 p.m.
Evening Service 7:30 p.m.
Nursery available for all Sunday services.
Prayer Meeting and Bible Study 7:30 p.m. Wednesday.

TRINITY LUTHERAN CHURCH
City Library (Culver)
R. J. Mueller, B.D., Pastor
(Phone: Rochester: CA 3-5624)
Worship Services every Sunday at 9:00 a.m.
Sunday School at 10:00 a.m.
Children's Confirmation Class at 5 p.m. Fridays.
Communion on last Sunday of the month.

ST. MARY'S OF THE LAKE CATHOLIC CHURCH
"The Church With The Gold Crosses"
Rev. Joseph A. Lenk, Pastor
Sunday Mass 7:00 a.m., 8:00 a.m., 10:00 a.m. and 11:00 a.m.
Daily Mass 9:00 a.m.
Confession Saturday 7:00 a.m. to 9:00 p.m.
Confession Saturday 7:00 p.m.

ZION GOSPEL CHAPEL
Rev. Ben Tollison, Minister
Marion Kline, Superintendent
Dwight Kline, Class Leader
Manson Leap, Lay Leader
Sunday School 9:30 a.m.
Preaching Service 10:45 a.m.
Evening Worship 8 p.m., every 4th Sunday of the month.
Prayer Meeting Thursday 8:00 p.m.
Everyone Welcome.

TRINITY EVANGELICAL UNITED BRETHREN CHURCH
Rev. Robert Berkey, Minister
Raymond Morrison, Supt.
Sunday School 10:00 a.m.
Morning Worship 11:00 a.m.
Evening Worship 7:30 p.m. on alternate Sundays.
Choir Practice 6:30 p.m. Thursday.
Prayer Meeting 7:30 p.m. Thursday.

CULVER LARGER PARISH E.U.B. CHURCHES
Rev. Dwight McClure, Pastor
Leonard Epp, Assistant Pastor
EMMANUEL EVANGELICAL UNITED BRETHREN CHURCH
Jesse White, Superintendent
Sunday School 9:30 a.m.
Evening Worship 8:00 p.m.
Morning Worship 10:30 a.m.
Youth Fellowship 7:15 p.m.
HIBBARD E.U.B. CHURCH
Jack Quivey, Superintendent
Sunday School 9:45 a.m.
Morning Worship 10:45 a.m.
BURR OAK E.U.B. CHURCH
Bert Crumer, Superintendent
Morning Worship 9:00 a.m.
Sunday School 10:00 a.m.

MEMORIAL CHAPEL CULVER MILITARY ACADEMY
Chaplain Allen F. Bray, USNR
Holy Communion — 8:00 a.m.
Woodcraft Service — 10:00 a.m.
Naval, Horsemanship, and Theater Schools Service — 11:00 a.m.
The Chapel is open daily for personal prayer and meditation from 7 a.m. until 10 p.m.
Visitors always welcome!

ST. THOMAS' EPISCOPAL
Center and Adams Sts., Plymouth
Father William C. R. Sheridan, Pastor
Summer Schedule
7:00 a.m. Holy Eucharist.
9:00 a.m. Family Eucharist.
9:00 a.m. Parish Nursery

GRACE UNITED CHURCH
Rev. H. W. Hohman, Pastor
Music
Mrs. Robert T. Rust
Margaret Swanson
Sunday School 9:30 a.m.
Morning Worship 10:30 a.m.

SEVENTH DAY ADVENTIST
M. G. Johnson, Pastor
631 Thayer St., Plymouth
Worship Service 9:30 a.m.
Sabbath School 10:30 a.m.

BURR OAK CHURCH OF GOD
R. Warren Sorenson, Pastor
Burton Feece, Superintendent
Larry Davis, Ass't. Supt.
Sunday School 9:45 a.m.
Worship Service 10:45 a.m.
Evening Study Hour 7:30 p.m.
Holy Communion observed the first Sunday of each month during the morning worship service.
A cordial welcome is extended to all to worship with us.

UNION CHURCH OF THE BRETHREN
State Road 17
Clyde Lehman, Pastor
Joe Heiser, Superintendent
Sunday School 9:30 a.m.
Morning Worship 10:30 a.m.

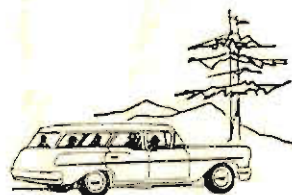
The Culver Citizen — Culver, Indiana — Aug. 12, 1964 — Page 13

FIRST CHURCH OF CHRIST SCIENTIST
428 S. Michigan St., Plymouth
Reading Room open in Church Edifice 2 to 5 - Wed., Thurs., Fri., & Sat.
Morning Worship 10:30 a.m.
Evening Worship Wednesday 7:45 p.m.
Sunday School 10:30 a.m.
Continuing a series of Bible Lessons on names which belong to God, the subject at Christian Science services on Sunday will be "Soul."
The Bible readings will include this verse from Psalms: "Give unto the Lord the glory due unto his name; worship the Lord in the beauty of holiness."
Related readings from the Christian Science textbook will include these lines: "Immortality, exempt from age or decay, has a glory of its own, — the radiance of Soul . . . Beauty is a thing of life, which dwells forever in the eternal Mind and reflects the charms of His goodness in expression, form, outline, and color" (Science and Health with Key to the Scriptures, by Mary Baker Eddy, p. 247).

SUBSCRIBE TO THE CITIZEN



A NEW ROAD



"Let's find a new road!" That's a game we play often when we take a family ride. These little journeys of discovery have led us to some beautiful, serene sections of our community that we never would have seen if we'd stayed on the busy highway. At times, life itself can seem like a crowded, noisy highway. The years rush by . . . we promise ourselves that some day we'll take the time to look around us and try to understand where we are and why . . . but worldly interests tend to fill every minute to the brim. We wonder why the pleasures that we work so hard to obtain fail to bring us happiness . . . and we sense that life has a deeper meaning, if we could find it. The Church can guide you and your family to a new, wonderful road. Discover the warm fellowship, the renewed courage, the refreshing peace of mind that grow from membership in your neighborhood church.

Sunday	Monday	Tuesday	Wednesday	Thursday	Friday	Saturday
Leviticus 26:3-13	Leviticus 26:14-20	Psalms 25:1-10	Isaiah 30:15-21	Jeremiah 31:7-14	Matthew 23:1-15	John 16:4-15

This Feature Is Made Possible By The Following Firms Who Invite You To Attend A House Of Worship Each Week

<p>The State Exchange Bank Member FDIC Culver, Ind.</p>	<p>Gates & Calhoun Chevrolet, Inc. Complete Automotive Service East Jefferson Viking 2-3000 Culver, Ind.</p>	<p>Nelson Equipment Co., Inc. Intl. Trucks - Farmall Tractors McCormick Farm Equipment 504 Lake Shore Drive Viking 2-3354 Culver, Ind.</p>
<p>Hawthorn-Mellody Ice Cream and Milk Plymouth, Ind. Phone 936-2161</p>	<p>Walter Price's Abattoir Wholesale & Retail Meats 1/4 Mile South of Plymouth on Muckshaw Road</p>	<p>McKinnis Pharmacy Phone Viking 2-2871 Culver, Ind.</p>
<p>Park 'N Shop Super Market 207 E. Jefferson Phone Viking 2-2450 Culver, Ind.</p>	<p>Ray Wicker Ford Sales Has the answer to your transportation problems Culver, Ind. Phone Viking 2-2791</p>	<p>Manor Market At Maxinkuckee Landing East Shore Drive Culver, Ind.</p>
<p>Coca-Cola Bottling Co., Inc. of Plymouth Plymouth, Ind.</p>	<p>The Country Store Open 8 A.M. to 8 P.M. Daily 7 Days A Week Groceries - Meats - Sundries 138 West Shore Drive On The S Curve Culver, Ind.</p>	<p>Photo Supplies Newspapers Greeting Cards Fannie May Candy Culver News Agency 108 S. Main St. Culver, Ind.</p>

CLASSIFIED ADS



Culver's Four-County Trading Area's Recognized Market Place

RATES: Up to 25 words, \$1.00; 2 weeks, \$1.80; 3 weeks, \$2.40; 4 weeks, \$2.80. Up to 50 words, \$2.00; 2 weeks, \$3.50; 3 weeks, \$4.80; 4 weeks, \$5.60. Additional words 4c each. Minimum charge \$1.00.

RATES quoted are for cash with order; add 50c if charged. Service charge of \$1 for blind ads in care of The Citizen. Classified display, \$1 per inch. Card of Thanks, In Memoriams, and Obituaries, \$1.50. Front page reading notices, up to 25 words, \$7.50. Local display advertising rate 70c per column inch. Ads accepted until 9 a.m. Wednesday, day of publication.

NOTICES

ICE CREAM SOCIAL: Saturday, Aug. 15, 5 to 8:30 p.m., Hibbard E.U.B. Church. Barbecue sandwich, pie or cake, ice cream, coffee or cold drink, donation 50¢. 33n

ALL KINDS OF JOB PRINTING

THE CULVER PRESS

SERVICES OFFERED

A NEW NURSERY SCHOOL for four-year-olds held in home of Mrs. Alice Neff, 321 West Washington St., Culver. For information and reservations phone Viking 2-2092. 33*

SCHOOL GIRL SPECIAL: Better permanents, now \$6.95. Good until end of August. Village Beauty Shop, Viking 2-3511. 33-2n

LIMESTONE DRIVEWAYS \$4.30 ton spread. Also gravel, top dirt, fill. Agricultural limestone, A.S.C.P. approved \$4.50 ton spread. Also backhoe work, excavating, filter beds, etc. George Hopple Trucking. Viking 2-2514. 11-4*1fn

SILOS & SILO REPAIRS — Roofs, chutes, banding, inner-combs, UNLOADERS, SCREW FEEDERS, STORMOR bins (drying or storage). Batch dryers, Grain augers, aerators, CHESTER C. DIETERT, NORTH JUDSON, IND. 18-27*

ABSTRACTS OF TITLE to Real Estate in Marshall County by LACKEY AND MURPHY, Phone 936-2226 or 936-4421. 23t1*

ADDIE'S PIE SHOP
410 E. LaPorte St.—Plymouth
Featuring Home Style Baked Goods
FRESH DAILY
Pies — Cakes — Cookies
Breakfast & Dinner Rolls
Doughnuts
Complete Line Of Delicatessen Foods
Phone 936-3867 2tfn

BILL STOKES SEWING MACHINE REPAIR. Service for all makes. For free check over call Argos, 892-5012.. 39tfn

FELKE FLORIST
Plymouth
Cut Flowers and Potted Plants Of All Kinds
Funeral Work A Specialty
We are as close as your phone
936-3165 COLLECT 15tfn

CONCRETE SEPTIC TANKS \$50 and up. Grease traps and distributions tanks. Shirar Brothers, 1203 Chester St., near Cemetery, Plymouth, Ind. Phone 936-3410. 10-52*

HUDON TYPEWRITER SERVICE, 103 W. LaPorte Street, Plymouth. Sales-Service-Rentals Typewriters and Adding Machines. Repairs on all makes. Royal Portable dealer. Phone 936-2728. 38tfn

HELP WANTED

HELP WANTED: Married man, \$3.00 per hour full time or \$2.00 per hour part time. Local. (Please give phone number). Write P.O. Box 254, LaPorte, Ind. 34-4n

Subscribe To The Citizen

WANTED TO BUY

WANTED TO BUY: Junk. Will haul trash. Call Viking 2-2145, or write Oscar Workman, Burr Oak. 33*

SITUATION WANTED

TREE WORK of any kind. Free estimates. Phone evenings — VI 2-3008. 31-5*

FOR SALE MISC.

ATTENTION FARMERS
We have a large stock of 1 1/2, 2 1/2 inch corrugated galvanized steel roofing, also 5 v-crimp, Tyl Lyk roofing in all sizes at a saving. Knox Junk Yard
Phone 772-3718, Knox, Ind. 31-3n

SPINET PIANO BARGAIN WANTED: Responsible party to take over low monthly payments on a spinet piano. Can be seen locally. Write Credit Manager, P. O. Box 215, Shelbyville, Ind. 30-4*

"GARAGE SALE": 1424 & 1444 East Shore Drive, Culver, Saturday, August 15 — 10 a.m. Beds (complete), rugs, windows, shutters, dishes, oil burner, washing machines, furniture, miscellaneous. 33*

GENERAL MOTOR SCOOTERS are smooth, safe and simple. Buy direct from factory and save. Complete with 4 HP engine, automatic clutch, electric lights and horn, \$149.50. Come in for a ride demonstration or write for catalog. Factory and show room at 511 E. Colfax, South Bend, Ind. 33-4n

FOR SALE: 1959 4-D Catalina Pontiac sedan. Heater. Excellent condition. 34,000 miles. Price \$800. M. R. Robinson. VI 2-2752. 33-2n

FARM EQUIPMENT

JOHN DEERE
"Quality Farm Equipment"
PLYMOUTH FARM SUPPLY
Bargains — New & Used 36tfn

PRODUCE FOR SALE

Peaches, Potatoes, Haag's best pink prunes and Dungleburger plums ready now. Bartlett pears Sept. 1st. Haag Orchards, 3 miles east of Walkerton on rd. 6 then 1 1/2 miles south. Ph. Walkerton 386-2692. 33n

SWEET CORN FOR SALE: Golden Bantam, three dozen for \$1.00. First farm east of Academy on State Road 10 — south side — watch for sign. Jim Doty. 30-4*

BOATS FOR SALE

WEST SHORE BOAT SERVICE
• Sales • Service • Storage
• Rentals • Gas & Oil • Launching
— Mercury Motors —
Crosby and Lone Star Boats
— All Marine Supplies —
588 West Shore Drive, Culver
Phone Viking 2-2100 tfn

REAL ESTATE FOR SALE

Sales Rentals
REAL ESTATE
see
C. W. EPLEY REALTY
Lake Residential
11tfn

Michigan - Excellent Farm Home in middle of southwestern Michigan industrial area. 45 acres. Good soil in good community. Write Box 45, Lawrence, Mich. 33n

FOR SALE, RENT, OR TRADE: House in Hibbard. L. Schoff, 5 C Road, north of Plymouth. Phone 936-7066. 33*

FOR SALE: Two-bedroom home, \$8500, \$500 down. A four-bedroom home, \$12,500. A three-bedroom home, \$5750. C. W. Epley Realty 32-2n

Business To Buy or Sell Lake
REAL ESTATE
Call
Dale or Rebecca Jones, Salesmen
Chipman, Jenkins & Chipman,
Brokers
Phone VI 2-3128
Residential Farm
1-26* 1fn

FOR RENT

FOR RENT: Three-bedroom house with utility room and garage on Plymouth St., Culver. Located on the lake. Call Park 'N Shop, phone VI 2-2450. 22tfn

FOR RENT: Guest house apartment, completely furnished, warm in winter, cool in summer. Lake Maxinkuckee privileges. Rent day, week, month, or season. Viking 2-2684. 32-3n

FOR RENT: One-bedroom home, \$35 per month. C. W. Epley Realty. 32-2n

3 BEDROOM LAKE-FRONT cottage available to rent by month or season of 1965. Phone Viking 2-3598. 32-3*

APARTMENTS FOR RENT

FOR RENT: Five-room upstairs apartment. Available Aug. 1. Phone VI 2-2798. 30-4n

FOR RENT: Furnished apartment, air conditioned. Water and heat furnished. Phone VI 2-2641. 26tfn

FOR RENT: Newly decorated furnished apartment; sleeping rooms. 617 Pearl St. Viking 2-3442. 1tfn

DELUXE COLLEGE AVE. apartment for rent (near Lake). Two bedrooms with finished attic for more sleeping space, large living room and dining room, modern kitchen with stove and refrigerator furnished. Also has sundeck, utility room and attached garage. Prefer adults. Call Roth Clinic. VI 2-2566. 33n

BUSINESS OPPORTUNITIES

Shell — Gas station with 7-room house, attached on US131 and M42. For details write or see Chester Gullekson, Manton, Mich. 33n

Enter A Growing — And profitable business with products needed by 85 per cent of the homes and businesses in this area. Our water conditioning equipment is compact, easily installed, and includes a full line of sales and rental units. Unique features, extra compact size, and corrosion - proof construction give proven sales advantage. Build your own future with a minimum investment. Write or phone for complete details. Velvet Soft, Inc., 430 W. 21st St., Holland, Mich. EXport 6-5995. 33n

CARD OF THANKS

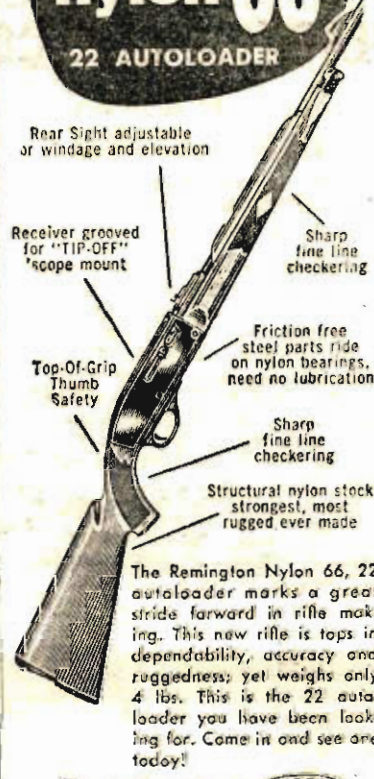
The family of Mrs. Herman Cook takes this means to express their heartfelt thanks and appreciation to friends and neighbors for their thoughtful expressions of help and sympathy extended during the illness and death of our loved one.
HERMAN COOK and FAMILY
33*

LOST AND FOUND

LOST: Set of keys on rectangular ring. If found call Crockett, Viking 2-2506. 33n

NEWSWORTHY — When a cow on the Bartholomew County farm of John Robertson gave birth to a single bull calf, the event rated this headline in The Hope Star-Journal: "Roberson's Cow Has Single Calf — And That Is News." The newspaper explained that the cow's birth of a single calf ended a record of eight consecutive twin births over a period of eight years. Robertson said the cow gave birth to a single calf 10 years ago and then started having twins as an annual occurrence for eight years.

A Completely NEW concept in firearms engineering REMINGTON nylon 66 22 AUTOLOADER



Rear Sight adjustable or windage and elevation
Receiver grooved for "TIP-OFF" scope mount
Sharp fine line checkering
Friction free steel parts ride on nylon bearings, need no lubrication
Sharp fine line checkering
Structural nylon stock strongest, most rugged ever made
The Remington Nylon 66, 22 autoloader marks a great stride forward in rifle making. This new rifle is tops in dependability, accuracy and ruggedness; yet weighs only 4 lbs. This is the 22 autoloader you have been looking for. Come in and see one today!

Remington OUPOND
"As Advertised in the Farm & Home Section"

VILLAGE HARDWARE

Leiters Ford

Notice

OF ADDITIONAL APPROPRIATIONS
Notice is hereby given the taxpayers of Culver Community Schools, Marshall County, Indiana, that the proper legal officers of said municipality at their regular meeting place, on 27th day of August, 1964, will consider the following additional appropriations which said officers consider necessary to meet the extraordinary emergency existing at this time.

Special School Fund:	
A-1f: General Administration	\$ 1,200
B-5: Clerical Service	180
B-7: Books and Repairs	80
B-9: Other Instructional Expense	200
D-4: Light and Power	750
F-5: Social Security	74
F-6: Official Bonds	500
H-1: Payment of Bonds	678
H-4: Payment of Bond Interest	200
H-6: Interest on Loan	200
Tuition Fund:	
B-1: Salaries of Principals	671
B-3: Salaries of Teachers	31,276
H-3: Legal Transfers	2,000
Taxpayers appearing at such meeting shall have a right to be heard thereon. The additional appropriation as finally made will be automatically referred to the State Board of Tax Commissioners, which Board will hold a further hearing within fifteen days at the County Auditor's office of Marshall County, Indiana, or at such other place as may be designated. At such hearing, taxpayers objecting to any of such additional appropriations may be heard and interested taxpayers may inquire of the County Auditor when and where such hearing will be held.	
WOODEE McGLOTHIN, Sec. Officer of Taxing Unit	

ORDER BLANK For Mail Order Want Ads

Write your classified ad on the lines below and mail to:

THE CULVER CITIZEN, Culver, Ind.

Enclosed find \$..... Please run the ad below for times. (Send Cash, Check or Money Order.) Count each word or initial, name, telephone number and address, when reckoning cost.

..... 5 Words
..... 10 Words
..... 15 Words
..... 20 Words
..... 25 Words
..... Add'l Words
..... Add'l Words

Name Address
Town Phone

Up To 25 Words Only \$1.00 Additional Words 4c Per Word

It Pays To Advertise



Citizen Advertising Is Your Best Buying Guide

Letters Ford

By Treva Leap

Phone Letters Ford 832-4551

The Zion Gospel Chapel will hold meetings each evening for a week beginning Sunday evening, Aug. 15. Rev. Dennis Lett of Winona Lake will be the guest speaker and will bring special music. The public is invited to attend the meetings which will begin at 7:30 p.m. each evening.

Mrs. Floy Leap was honored on her birthday Sunday when Mr. and Mrs. Manson Leap and family entertained with a dinner. Other guests were Mr. and Mrs. Arnold Adams and daughter of Kewanna, Mr. and Mrs. Jesse Sims and son, Mrs. Alta Olsen Culver, Mr. and Mrs. Loran and daughters of Warsaw, and Misses Eva and Treva Leap of Letters Ford. Mrs. Leap received many nice gifts.

Mr. and Mrs. Terry Mishler recently moved into their new home near the Zion Church.

The Hospital Auxiliary needs new members and articles are also needed for the booth at the Fulton County 4-H Club this week at Rochester. The booth will open Thursday for Aubbe-naubbee Township. Articles are to be taken to Rawles Grocery

where they will be picked up. Miss Patsy Leap of Bass Lake, visited Friday with her parents, Mr. and Mrs. Manson Leap, and family.

Mr. and Mrs. Clyde Overmyer, Mr. and Mrs. Charles Sopher and family, and Mrs. Floy Leap and daughters were dinner guests Saturday of Mrs. Ruth Sopher.

The Zion Gospel Chapel Missionary Society met with Mrs. Effie Shaffer on Wednesday evening, Aug. 5. The meeting opened with group singing followed with prayer by Mrs. Floy Leap. The lesson was presented by Mrs. Doris Overmyer who used the topic "Anna." Poems were read by Mrs. Tot See and Treva Leap. Mrs. Floy Leap told of Miss Luanne Adams' work in Child Evangelism during the summer months. The song, "Jesus Calls Us," was sung after which Mrs. Leona Overmyer dismissed the worship with prayer. Roll call was answered with a scripture verse with the word, "Serve," in it by 15 members and 5 children present. Mrs. Tot See was in charge of the entertainment, after which the hostess served refreshments. An auction sale will be held next month at the home of Ruth Sopher.

SUBSCRIBE TO THE CITIZEN

FULTON COUNTY COMMUNITY SALE

Rochester, Indiana

SOME OF OUR TOP PRICES OF SATURDAY, AUG. 8:

135-lb. Calf	cwt.	26.50
160-lb. Calf	cwt.	24.50
Holstein Cow		230.00
Hol. Cow Springer	Don Pressel	202.50
905-lb. Steer	cwt.	24.20
1090-lb. Steer	cwt.	24.00
905-lb. Steer	Gloria Birk, Macy	cwt. 23.50
1085-lb. Steer	Ronnie Lowe, Macy	cwt. 23.30
1305-lb. Hol. Str.	Tabler and Jarrette	cwt. 20.50
1225-lb. Hol. Str.	Tabler and Jarrette	cwt. 20.00
1150-lb. Hol. Cow	Charley Myers, Argos	cwt. 14.80
1125-lb. Cow	George Sheets, Akron	cwt. 14.40
1250-lb. Cow	George Sheets, Akron	cwt. 14.30
36-lb. Pigs	Ray Brown, Macy	ea. 10.00
8 Hogs, 1775 lbs.	Al Taylor, Winamac	cwt. 17.60
205-lb. Hogs	Bonnie Kinney, Silver Lake	cwt. 17.30
11 Hogs, 2440 lbs.	Robert Nelson, Peru	cwt. 17.10
8 Sows, 2620 lbs.	Earl Barkman, Rochester	cwt. 14.20
8 Sows, 2575 lbs.	Chester Adkins, Peru	cwt. 14.10
550-lb. Sows	Mikesell & Goodrich, Roch.	cwt. 12.10
105-lb. Lambs	George Smith, Peru	cwt. 24.00
100-lb. Lambs	Manford Rife, Kewanna	cwt. 24.00

Vern Schrader & Burdett Garner, Auctioneers Carl Newcomb

PUBLIC SALE

Having sold our farm and moving to town, we will sell the following personal property located 1 1/4 miles west of Argos on State Road 10 to Linden Road, then 3 miles south or 7 miles east of Culver on State Road 110 to Linden Road, then 1 1/4 miles north or 8 miles north of Rochester on State Road 31 to State Road 110 then 2 miles west to Linden Road then 1 1/4 miles north.

Saturday, Aug. 15

12:30 P.M.

Machinery & Miscellaneous

1962 Ford 801 Powermaster tractor; Ford plow; harrow; cultivator; corn picker; 1960 John Deere No. 10 frail chopper; mower; grain drill; combine; manure spreader; Oliver 9-ft. wheel disk; L.H.C. corn planter; 32-ft. Cross elevator; wagon and rack; unloading wagon jack; 10-ton hoist; Bellu garden tractor; lawnmower; one horse harrow; one horse drill; corn sheller; tractor carry all; bottle gas brooder stove; oil burner gas barrel; table saw; hog feeder; hog houses; 40-ft extension ladders and other articles too numerous to mention.

Livestock

20 Hampshire shoats, average weight 80 lbs.

Household Goods

Rose living room suite; blond end tables; blond night stand; telephone stand; magazine rack; plastic rocking chair; small rocker; odd chairs; card table and chairs; child's table and chairs; floor lamps; table lamps; Philco TV-radio; clock radio; bedroom suite; box springs; 4x9 rug; Crane breakfast set and 4 chairs; G.E. refrigerator; Kelvinator electric range; 20-ft. Cold Spot deep freeze; Speed Queen automatic washer; Conner pressure cooker; french frier; Minute Maid pressure cooker; Mix Master; sewing machine and many other articles.

Antiques

2 cane bottom chairs, just refinished; child's rocking chair; walnut drop leaf table; bed and dresser with stand.

TERMS: Time extended to those seeing our clerk before or on day of sale. To all others CASH. Not responsible for accidents.

Lunch Served by Jordan Ladies Aid

Orval and Gwendolyn Town

Auctioneers: Joe Pence, North Manchester and Bob Rosenbury, Rochester Clerk: Earl Mattix, Argos

33*

CLEARANCE

SEMI-ANNUAL

1/4 - 1/3 - 1/2 OFF

Sale!

Culver Clothiers

Sport Shirts

1.98 to 5.98

1/3 to 1/2 OFF

MEN'S SUMMER WHITE Dress Shirts

1/3 to 1/2 OFF

Osh Kosh B'Gosh

TAN MATCHED SET

PANTS — 3.77

SHIRTS — 2.77

6.49 per set

ASSORTED GROUP OF MEN and BOYS

Canvas Shoes

2.98 up

SLACKS

Wash-Wears, Wools, Dacrons

3.98 to 12.95

MEN'S SPORT COATS

Wash-Wears Wools - Dacrons

11.95 to 24.95

ENTIRE STOCK

Men's SUITS

Lightweight & Year 'Round

19.95 to 52.50

Boys' SUITS & SPORT COATS

Lightweight & Year 'Round

SPORT COATS from 4.98

SUITS from 12.98

Early-Bird Specials

While They Last

MEN'S TIES - Values to 2.50 - 1.00

1.00 FAMOUS BRAND SOCKS - 3 for 2.65

Regular 8 for 1.50 HANDKERCHIEFS NOW 1.00

MEN'S STRAW HATS - 1.00, 2.00, 3.00

SWIM SUITS

MEN'S AND BOYS'

20% to 50% OFF

MEN'S AND BOYS'

BERMUDAS

and WALKING SHORTS

1.98 & up

MEN'S and BOYS' SHOES

Work, Casual, and Dress Styles

FLORSHEIM - JARMAN - WEYENBERG -

WOLVERINE

3.95 to 24.95

1/3 to 1/2 OFF

BACK-TO-SCHOOL SPECIALS

BOYS' COTTON PANTS - 3.98 NOW 2.98

SPORT SHIRTS, JACKETS, SHOES

20% OFF

Culver Clothiers

Culver, Indiana

Summer Shoes

BALL BAND

SUMMERETTES

Greatly Reduced

All sizes and styles

LEATHER FLATS

Values to \$5.98

\$2.00 & \$3.00

Sandals

Leather & Straw

Reduced

Wind Breakers

Were \$5.98

Now \$3.98

LADIES'

**Night Gowns
& Pajamas**

Were \$2.98

Now \$1.98

Ladies' Blouses

Were \$1.99 **NOW \$1.49**

Were \$2.99 **NOW \$1.98**

Were \$3.99 **NOW \$2.98**

Were \$4.99 **NOW \$3.98**

Sizes 30 to 44

Summer Jewelry

2 for \$1.00

plus tax

Bargain Table

SOME GOOD BUYS

LADIES'

Knee Pants

Were \$5.98 **NOW \$3.98**

Were \$4.98 **NOW \$3.98**

Were \$3.98 **NOW \$2.98**

Were \$2.98 **NOW \$1.98**

Summer Purses

\$2.00

plus tax

THE Kelly SHOP

110 N. Main St. — Culver, Ind.

ANNUAL SUMMER CLEARANCE

(Our Largest Sale)

SALE

STARTS 8:30 FRIDAY, AUG. 14

Open 8:30 A.M. to 8:30 P.M. Friday — 8:30 to 5:30 Saturday

**A Complete Sell Out Of
CATALINA SWIMWEAR**

Ladies' Sizes 30-40

Were \$15.00	NOW \$ 9.98	Were \$18.00	NOW \$12.98
Were \$16.00	NOW \$10.98	Were \$20.00	NOW \$13.98
Were \$17.00	NOW \$11.98	Were \$24.00	NOW \$15.98
	Were \$26.00	NOW \$16.98	

Children's Sizes 4 to 14

Were \$2.98	NOW \$1.98	Were \$4.98	NOW \$2.98
Were \$3.98	NOW \$2.98	Were \$5.98	NOW \$3.98
	Were \$7.98	NOW \$4.98	

SALE OF 150 SPRING AND SUMMER DRESSES

Also A Selection Of Fall & Winter Dresses

Ladies' Sizes 7 to 20 — 12½ to 24½

Were \$3.98	NOW \$2.98	Were \$10.98	NOW \$ 7.98
Were \$5.98	NOW \$3.98	Were \$12.98	NOW \$ 9.98
Were \$6.98	NOW \$4.98	Were \$14.98	NOW \$10.98
Were \$8.98	NOW \$5.98	Were \$16.98	NOW \$12.98

SPORTS WEAR

Shorts, Jamaicas & Pedal Pushers

Were \$2.98	NOW \$1.98	Were \$4.98	NOW \$2.98
Were \$5.98	NOW \$3.98	Were \$3.98	NOW \$2.98

**Close Out
Maternity Wear**

A Kelly Shop Special

Half-Slips

Assorted Colors

each \$2.50

2 for \$4.00

LADIES'

Knit Tops

Lots of Colors and Styles

Were \$3.98 **NOW \$2.98**

Were \$2.98 **NOW \$1.98**

CLOSED THURSDAY IN PREPARATION

ALL SALES FINAL — NO RETURNS — NO EXCHANGES

No Gift Wrapping On Sale Merchandise

Ladies' Skirts

Were \$3.98 **NOW \$2.98**

Were \$4.98 **NOW \$3.98**

Were \$5.98 **NOW \$3.98**

Were \$7.98 **NOW \$5.98**

Size 22 to 32

Girls' Dresses

1 to 3x

3 to 6x - 7 to 14

Were \$2.98 **NOW \$1.98**

Were \$3.98 **NOW \$2.98**

Were \$4.98 **NOW \$3.98**

Were \$5.98 **NOW \$4.98**

GIRLS'

Summer Pajamas

Sizes 4 to 14

Were \$1.98

Now \$1.49

CHILDREN'S

**Shorts, Jamaicas
& Pedal Pushers**

Sizes 1 to 6x

Were \$1.98 **NOW \$1.25**

Were \$1.19 **NOW .79**

GIRLS'

Short Sets

Now

\$1.98 & \$1.49

Girls' Blouses

Were \$1.69 **NOW \$1.19**

Were \$1.00 **NOW .79**

Ladies' Slacks

Sizes 10 to 18

Were \$3.98 **NOW \$2.98**

Were \$4.98 **NOW \$3.98**

Were \$5.98 **NOW \$3.98**

Yard Goods

Group No. 1

3 yds. \$1.29

Group No. 2

1 yd. \$1.00

Extra Special Selection