

THE CULVER CITIZEN

ON LAKE MAXINKUCKEE ★ INDIANA'S MOST BEAUTIFUL LAKE

VOLUME 80, NUMBER 10

FIFTEEN CENTS PER COPY

MARCH 7, 1974

DRUGS TAKEN FROM McKINNIS PHARMACY

RELATED TO OTHER THEFTS

McKinnis Pharmacy was robbed last Thursday night in what local police believe to be a continuation of several other break-ins in this area.

The McKinnis robbery resulted in the loss of about \$1,200 worth of narcotic and other drugs. All items taken were narcotics, stimulants or depressants.

Entry into the pharmacy building was gained through the side door on the west side of the store building, using some power tools to drill out the lock from the door. Burned matches throughout the store indicated that the person or persons who committed the crime used matches from the check-out counter for illumination. The shelves behind the pharmacy were carefully emptied of most of the drugs containing the mind-affecting drugs, and the Federally-approved narcotic drug cabinet was easily broken open and emptied. Despite the large amount of drugs taken, no other drug-related hardware, such as smoking pipes or syringes, were taken.

The robbery resembled other recent area break-ins, reports Culver Police Chief Richard Woodward. On January 8, 1974, the Lake Shore Clinic was robbed of all injectables, including pain killer and some cocaine.

Another recent theft, on February 6, 1974, removed depressants and stimulants from the Culver Dental Clinic.

The presence of the burned matches on the McKinnis Pharmacy floor relates this latest robbery with the two earlier crimes, and also three recent thefts in Argos.

Culver police have several leads, including a radio transmitter discovered at the scene of the McKinnis crime. A request has been forwarded to the manufacturer to trace the owner through the



HOLDING THE BROKEN LOCK from his store door is Robert McKinnis, showing the way the

warranty registration. Another clue found at the scene of the Culver Dental Clinic was a pry tool that was manufactured in the high school shop. Attempts are being made to trace the original owner of this item.

In a late development, Chief Woodward reported that children lead police on Sunday morning to 140 vials of Novocain which were found around the railroad tracks just east of the town park between the park Lodge and the Culver Military Academy. This seemed to indicate that the items were dropped following the January robbery, and left undiscovered in the little-used area.

Chief Woodward reports that this drug is especially dangerous because it can act to stop heart action is injected into the blood.

CHAMBER OF COMMERCE TO MEET TUESDAY

The Culver Chamber of Commerce will hold its monthly meeting Tuesday, March 12th at 12:00 noon at the Culver Inn. All members are urged to attend.



CLUES TO RECENT ROBBERIES are here displayed by Culver Police Chief Woodward, showing the portable transceiver found at the McKinnis Pharmacy, and also the

pry tool found at the scene of an earlier robbery. The chain of drug-related crimes has not yet been solved. **CITIZEN photo**

thieves from last week's break-in gained entrance to his store. **CITIZEN photo**

Girl Scout Week

The Culver Girl Scout Service Unit held its regular monthly meeting on Thursday, February 28th, in the Fellowship Hall of Emmanuel United Methodist Church.

Among many items discussed was Girl Scout Week, March 10th through 16th. It was decided this year to set up a display in the Culver Public Library. Each troop has been asked to donate items for the display table depicting one of the phases of the Girl Scout Program: Homemaking, Citizenship, Health & Safety, International Friendship, The Arts, and the Out-Of-Doors. This display will be in the Library from March 7th through 18th. The public is invited to stop in and see the display.

Each year the Girl Scouts visit various churches throughout the Culver community on Girl Scout Sunday. This year the girls will be attending the Culver Military Academy Memorial Chapel on Sunday, March 10th. All Girl Scouts and their leaders are asked to meet in the Recreation Hall, across the street from the Chapel, at 10:45 a.m. in full uniform. The girls will proceed as a group to the chapel for the service at 11:00 a.m.

Troop Committee Training will take place in the Girl Scout Center in Plymouth on Monday, March 18th, starting at 7:00 p.m. All adult volunteers serving under this heading are invited to take advantage of this training.

CCHS RADIO SHOW TO HOLD PANEL DISCUSSION ON DRUGS

This Sunday, March 10th, the Culver Community High School program will feature a panel discussion on Drug Abuse. The weekly radio program is heard on station WICA, Plymouth. This program will be moderated by CCHS principal Donald French and will feature the school team which recently attended the Drug Abuse Workshop sponsored by the Indiana State Department of Education, held in Indianapolis. The team was composed of Bob Craycraft, 10th grade student at Culver; Mrs. Barbara Winters, vocational home-making teacher; Mrs. Connie Ervin, Culver School Nurse; Mr. Gene Reese, Health Teacher; and Mr. King, junior high science teacher.

Lower Speed Limit

Last week, as the statewide 55 mile-per-hour speed limit went into effect, marked the first time in 29 years that motorists have been forced to slow down on Hoosier highways.

According to State Police Superintendent Robert L. DeBard, Indiana traffic laws required "reasonable and prudent" speeds on the open road beginning in 1939. A 35 mile-per-hour limit, imposed during World War II, was lifted in August, 1945.

In 1953, the Indiana General Assembly added an amendment to the speed law declaring that speed in excess of 65 miles per hour was assumed to be in violation of the reasonable and prudent limits.

Not until 1967 did lawmakers attach an amendment that fixed an absolute speed limit of 30 in urban zones and 65 on rural roads and highways.

The patrol efforts of more than 600 State Troopers will, DeBard said, continue to be "routine" but that the new speed limit will be "strictly enforced."

"The burden of responsibility," DeBard said, "rests with each motorist to make certain they keep within the new limits. Considering the power and riding comfort of cars we drive today," he added, "drivers will have to pay much closer attention to their speed."

Since last December, State Police figures show traffic deaths down considerably from previous years. Superintendent DeBard predicted further reductions in the loss of life as a result of the new lowered speed limits.

DOERR RETIRES

NIPSCO MANAGER RETIRES SERVED 46 YEARS

Clarence G. Doerr, Plymouth District Manager for the Northern Indiana Public Service Company for the past seven years, retired on March 1st. His retirement ended a 46 year career with the utility.

He joined NIPSCO in 1928 as a cadet engineer in the company's Hammond district, advancing quickly to junior engineer and then assistant general foreman.

By 1933 Doerr had moved to Plymouth as superintendent, and was promoted to district operating superintendent in 1950. He was promoted to district manager for Plymouth in 1966.

He was born in Carmi, Illinois, where he was graduated from high school. He received a bachelor of science degree in electrical engineering from the University of Illinois.

Active in community affairs, Doerr is a member of the Plymouth Chamber of Commerce, the Masonic and Moose lodges, and the Plymouth Country Club.

Clarence and his wife, Kathryn, are the parents of two adult daughters, Mrs. Evelyn Heim of Canoga Park, California, and Mrs. Joanne Maher of Temple City, California, and they have five granddaughters. The Doerrs attend the First Presbyterian Church in Plymouth where Doerr also served as an elder and trustee.

CLERK'S OFFICE HAS VOTER REGISTRATION FORMS

Marizetta Kenney, Town Clerk, has announced that the Clerk's Office now has voter registration forms. Voters may be registered at the Clerk's Office in the Town Hall until March 23rd.

SLOW DOWN!



NEW SIGNS ON S.R. 17 serve to remind us all that the legal maximum speed limit is now 55 miles per hour in Indiana. The restriction went into effect on March 1st following action by the short session of the Indiana legislature and Governor Bowen. Here, Mike Ringle of the

Plymouth office of the State Highway Department changes a sign from 65 to 55 on the stretch between Plymouth and Culver. The conversion was made by covering the old number with a new one, making the change back an easy operation, if the fuel shortage is ever solved. **CITIZEN photo**

THE FAMILY LAWYER

Free Press In High School

Two high school seniors wrote and mimeographed an "underground newspaper," then distributed copies to students just outside the school grounds. The principal, incensed, suspended them from their classes. The two students, equally incensed, took the matter to court.

At the hearing, the principal pointed to a rule of the Board of Education forbidding students to hand out any printed material without his approval.

But the court decided that the Board's rule was a violation of freedom of the press. Ordering the students reinstated, the court said such a rule could even prevent one student from handing another student a bible.



"The purpose of education," observed the court, "is to spread, not to stifle, ideas and views."

This version of student rights is now followed by most courts. In particular, they look with tolerance on political, social, and economic criticism. As one judge commented, in upholding the placing of an anti-war advertisement in a high school newspaper:

"Free speech is not confined to classroom discussion."

On the other hand, the law recognizes that some limits may be justified by the necessities of orderly education. "Time and place" rules for distributing literature are generally held to be within the school's authority. Extreme vulgarity, too, has been condemned.

Furthermore, courts usually allow a lighter rein on high school students than on college students. In one case, a court upheld disciplinary action against a high school student because of a scurrilous leaflet denouncing the principal. The court said:

"Activities of high school students do not always fall within the same category as the conduct of college students, the former being in a much more adolescent and immature stage of life and less able to screen fact from propaganda."

"The line of reason must be drawn somewhere."

A public service feature of the American Bar Association and the Indiana State Bar Association. Written by Will Bernard.

© 1974 American Bar Association

VACUUM CLEANER Sales & Service

LEROY DAVIS
715 Academy Road
Culver, Indiana
Telephone 842-2219

LETTERS

March 1974
Culver Community High School

Dear School Patron:

At long last the Athletic program at CCHS is on the move! I know there are those who say that because the varsity basketball team did not provide a winning season during the 1973-74 school year that things are not as they should be. No one would argue that winning is better than losing, no matter what the game. Nevertheless studying the subject from an objective point of view gives every indication that sports here in Culver have a bright future.

First of all there is a new spirit toward athletics at CCHS, starting with the administration, continuing with the coaching staff and permeating through the entire school. It's heartening to see the co-operation and hard work displayed constantly by the entire staff. The "love of the game" as displayed by our coaching staff and the dedication provided by them toward building the right attitude and the proper skill is a "must" for any discipline.

Second is the organization. Through positive criticism and continual evaluation, the total program begins to get in perspective and to set a direction which we want to go. That is what happened this school year. The varsity basketball team set a desirable pace through their hard work. Other teams began the long awaited winning drive as witnessed by the freshman teams unprecedented 11-5 record or the Culver 8th grade's near unbeaten season. The wrestling team came along with a respectable five hundred record in dual meets and with providing our school with no less than three young men who qualified for the Regional play at South Bend (all of the qualifiers are underclassmen).

The girls too are not to be denied. This year's intersarsity play in girl's basketball along with volleyball and with the coming of spring track as a long awaited improvement from the traditional GAA play sessions not only in Culver but throughout Indiana schools. The program for girls can be just as impressive and meaningful as our own girls here desire.

Other sports will have their day. Tennis will soon be a reality on the local scene. Facilities in this regard will be second to none and how wonderful with the coming summer months arrival that not only will the community have fine courts but the courts will be lighted in the evening so that both young and old can take advantage of this fast growing popular game.

Much money and effort has gone into improving the local athletic field so that the long awaited day has at last arrived when track events can be held on our local field with ease. School authorities too are in the midst of studying the advisability of other sports added to meet the ever growing needs of our student body.

We are well aware that any sports program does not begin by waving a magic wand but by careful planning at every stage of the way. Such was the reasoning behind the fine junior high and elementary clinics conducted by Coach Ken Hass and other basketball staff members for the first time during the summer of 1973 and which will be improved and again offered during the coming summer.

Even as this article is written, the writer has just observed one session of the current junior high wrestling clinic now being conducted by Coach Anderson and which upwards of two dozen boys from

the three junior highs are participating.

The spirit spreads to the varsity letterman's club which is striving to be more than just another school club but has as its goals the improvement of its members total contribution to school and community. Every Thursday these young men make a colorful and impressive addition to the school scene in their letter sweaters as Thursday becomes Letterman's Day within the school.

In the school community the Adult Booster Club has become more than just a dream and the school year sees more and more responsible adults assuming new roles in their attempt to make every young man a member of the Culver Military Academy Tailor Shop at the time of her death. She was a member of VFW Post #6919 Auxiliary.

She was married May 8, 1930, in Rochester, to Alvin T. Ewing. Surviving along with Mr. Ewing are two sons, Robert L. Ewing, Rochester, and Richard L. Ewing, McClellan, California; one daughter, Mrs. Orion (Jean) DeRutter, Argos; one brother, William Mikesell, Huntsville, Alabama, and eleven grandchildren. Two brothers and a sister preceded her in death.

Services were held at the Bonine Funeral Home, culver, were conducted at 2:00 p.m. Wednesday, March 6th, with Rev. Robert Hansen, pastor of the Argos United Methodist Church, officiating. Burial followed in Culver Masonic Cemetery. Memorial services were conducted by the VFW #6919 Auxiliary at the funeral home. Memorials to the Heart Fund will be accepted by the family.

1. Make the most of what you have, as happiness depends on what you have and what you wish for.

2. Stay young forever - age is not measured by the calendar.

3. Seek a little self importance—a little applause never hurt anyone.

4. Live for today as though each day will be your last and one day you'll be right.

5. Accomplish a goal. Succeed and begin over.

6. Learn to live with yourself.

7. Don't be a perfectionist because you can't please everyone.

8. Laugh at life. Laugh at yourself.

9. Develop an educational heart: see the other fellow's point of view.

TO THE EDITOR:

We just completed our course in Transcendental Meditation and it has been a wonderful experience for all of us. Many inquiries have been made about another course. Carol Dixon, the teacher in our area, will try to offer it again in six weeks or so, if there is enough interest. Otherwise, we shall offer the course again in the fall. Anyone who is interested should call me or drop me a note for information.

Many thanks for the beautiful story in the Citizen.

Sincerely,
Martha Bernauer
C.M.A. Box 26
Phone 842-3788

THE CULVER CITIZEN

Established July 13, 1894

Published Every Thursday Except For
The Week of July Fourth And The Week Of December Twenty-Fifth By The
Culver Citizen Corporation
Post Office Box 90, Culver, Indiana 46511
All Hours Telephone (219) 842-2297
Second Class Postage Paid at Culver, Indiana 46511

SUBSCRIPTION RATES

One Year \$5.00
Two Years \$8.50
Fifty Cents Additional For Subscriptions Outside Indiana

OBITUARY

EFFIE E. EWING

Mrs. Effie E. Ewing, Route 1, Culver, died Sunday, March 3, 1974 at 8:00 a.m. at the Caylor-Nickel Clinic, Bluffton, following an illness of one year.

Mrs. Ewing was born December 25, 1911, in Marshall County, to Charles and Alice (Asper) Mikesell. She was a lifetime resident of the area, and had been employed at the Culver Military Academy Tailor Shop at the time of her death. She was a member of VFW Post #6919 Auxiliary.

She was married May 8, 1930, in Rochester, to Alvin T. Ewing. Surviving along with Mr. Ewing are two sons, Robert L. Ewing, Rochester, and Richard L. Ewing, McClellan, California; one daughter, Mrs. Orion (Jean) DeRutter, Argos; one brother, William Mikesell, Huntsville, Alabama, and eleven grandchildren. Two brothers and a sister preceded her in death.

Services were held at the Bonine Funeral Home, culver, were conducted at 2:00 p.m. Wednesday, March 6th, with Rev. Robert Hansen, pastor of the Argos United Methodist Church, officiating. Burial followed in Culver Masonic Cemetery. Memorial services were conducted by the VFW #6919 Auxiliary at the funeral home. Memorials to the Heart Fund will be accepted by the family.

POLICY REGARDING LETTERS TO THE EDITOR

All letters submitted for publication must bear the name and address of the writer, and authorship will be verified before publication.

THE CITIZEN will, however, honor requests to withhold the name of the author.

Address letters to the Editor to:

THE CULVER CITIZEN
Post Office Box 90
Culver, Indiana 46511

NIPSCO GAS SUPPLY COSTS INCREASE AGAIN

Northern Indiana Public Service Company has been notified by the Natural Gas Pipeline Company of America that effective March 1st, the cost of gas to NIPSCO will increase another \$266,504 on an annual basis.

To offset this increase, NIPSCO today filed new rate schedules with the Public Service Commission of Indiana in accordance with an order of the Commission issued December 11, 1970, authorizing gas distribution utilities in Indiana to recover such gas supply increases whenever they have been allowed by the Federal Power Commission.

As a result of this latest increase, the average NIPSCO residential customer using gas for home heating will pay approximately 1 1/2¢ per month or 18¢ per year more for gas service beginning in March, while NIPSCO residential customers using gas for household purposes other than home heating will pay 1/2¢ per month or 4¢ cents per year more.

The effectiveness of the new rate schedules is subject to the approval of the Public Service Commission of Indiana.

So says the VA... Sporteaser

By EDDIE GERMANO

THE VA WILL PAY VETERANS TO COMPLETE HIGH SCHOOL, GO TO COLLEGE, OR LEARN A TRADE, EITHER ON-THE-JOB OR IN AN APPRENTICESHIP PROGRAM



The information contained herein is for informational purposes only. It is not intended to constitute an offer of insurance or any other financial product. For more information, contact your local VA office or the Department of Veterans Affairs, 2125, 410 Wisconsin Ave., NW, Washington, DC 20420.

CRYPTOQUOTE — Here's how to work it:

A X Y D L B A A X R
is L O N G F E L L O W

One letter simply stands for another. In this sample A is used for the three L's, X for the two O's, etc. Single letters, apostrophes, the length and formation of the words are all hints, each day the code letters are different.

A Cryptogram Question

J P X A Z S K, D W W Q E W M Q, J W
K P M L P J Z P P X K J Z W S Q P K P M L
P K J — F V W W F X.

ANSWER

REVEAL THE ANSWER IN THE MARCH 14, 1974 ISSUE OF THE CITIZEN

Society

SENIOR CITIZENS MEET

The Culver Senior Citizens met last Tuesday afternoon in Zion Hall of Grace Church. A group of 20 attended, representing Culver, Rochester and Monterey.

Refreshments were served after the various games by Leona Michaels.

CULVER BIBLE CHURCH SCHEDULES BUSY SUNDAY

This Sunday, March 10, will be a busy day at the Culver Bible Church.

Services will begin with Sunday School at 9:30 a.m. Church Worship Services begin at 10:45 and in addition to the regular singing and Bible message there will be a baby dedication service for the son of Pastor and Mrs. Clark's son, Kenneth Edward.

There will also be a carry in dinner in the church basement right after church at 12:00 Noon.

This Sunday also marks the beginning of Junior Church at the Culver Bible Church, for children between the ages of 4 and 10 years.

Everyone is invited to come and share in these services.

UNITED METHODIST WOMEN HOLD SPECIAL MEETING

The United Methodist Women are called to Prayer and Self-Denial in March, coming together on Thursday, March 14, at 7:30 p.m. in Fellowship Hall of Wesley United Methodist Church to bring their offering and hear "The People's Story. The sharing of the self-denial gifts goes for Ministries to Young Children and Teen-Agers in the United States and to ministries of Peace and Justice overseas. Program chairman for the observance will be Mrs. Earl Sharp. Hostesses are Mrs. Ted Clarno, chairman, and the Mesdames Richard Dehne, Richard Shoddy, Frank Henderson, Frank Setzler, and Earl Graham.

What Is MAN?

Study the Christian Science Lesson-Sermon on MAN this week and you will learn much about Man and his relation to God as his image, likeness and reflection. From the Christian Science Textbook by Mary Baker Eddy: "It should be thoroughly understood that all men have one Mind, one God and Father, one Life, Truth and Love."

Acts 10:34 = Peter says "Of a truth I perceive that God is no respecter of persons: But in every nation he that feareth him, and worketh righteousness, is accepted with him." These thoughts show us how to pray for world problems!

All are welcome to all services, at 428 South Michigan Street, Plymouth. Children to the age of 20 years are welcome to the Sunday School.

Thoughts

From The Living Bible

For I will pass through the land of Egypt tonight and kill all the oldest sons and firstborn male animals in all the land of Egypt, and execute judgment upon all the gods of Egypt—for I am Jehovah. The blood you have placed on the doorposts will be proof that you obey me, and when I see the blood I will pass over you and I will not destroy your firstborn children when I smite the land of Egypt. "You shall celebrate this event each year (this is a permanent law) to remind you of this fatal night. The celebration shall last seven days.

Exodus 12:12-15
Religious Heritage of America

50th Anniversary

50th WEDDING ANNIVERSARY

Mr. and Mrs. Annis Crum of Route 2, Culver, will celebrate their 50th wedding anniversary with an open house on Sunday, March 17, at the Pretty Lake Trinity Church. The church is located on Slate Road 17 just west of Plymouth. Friends are asked to call between 2:00 and 5:00 P.M.

Grace McKesson and Mr. Crum were married on March 16, 1924 in Plymouth by Rev. Leeper; and have lived most of their married lives in this community. Mr. Crum was employed many years by the Bendix Corporation of South Bend, retiring from there in 1969.

The couple has seven children—two daughters and five sons, all of whom will host the reception. Annis and Grace also have 26 grandchildren and five great-grandchildren.



MR. & MRS. ANNIS CRUM

POWELL JOINS ACADEMY FACULTY

David B. Powell of Bluffton has been employed by the Culver Educational Foundation as a mathematics instructor. Powell, a December graduate of Indiana University, succeeds the late Col. John E. Maier who died unexpectedly of a heart attack last September while refereeing an intramural football game.

A native of Bluffton, he is the son of Mr. and Mrs. Harold E. Powell. He attended high school in Bluffton before entering IU, on an honorary Indiana State scholarship and a Franklin Electric scholarship. He majored in math and physics, graduating with honors, and a nomination to Phi Beta Kappa. In addition, he is a member of Sigma Pi Sigma and Pi Mu Epsilon honor societies.

While at IU, Powell instructed for a year as an undergraduate teaching intern in mathematics, and he is a member of the National Council of Teachers of Mathematics. He is married to the former Kim Brown of Bedford.

TRI-KAPPA WILL MEET

The Culver Chapter of Kappa Kappa Kappa will meet at the home of Mrs. Burton Curtis on Monday, March 11th at 8:00 p.m.

GRANDDAUGHTER GUEST OF MRS. ZICHIEL

Mrs. Jerome Zechel, Sr., 20 Lake Shore Drive, Culver, had as her guests last Wednesday through Friday her granddaughter and husband, Mr. and Mrs. Egan Loda, of Chapel Hill, North Carolina. Dr. Loda and the former Barbara Ann Zechel have two children, David and Margaret Amanda.

STEPHENSON RETURNS FROM PACIFIC REPAIR OPERATIONS

Navy Electrician's Mate First Class William J. Stephenson, whose wife Barbara is the daughter of Mr. and Mrs. Charles Brucker of Monterey, returned to his home port here aboard the fleet repair ship USS Hector after operating in the Western Pacific for six months.

A 1961 graduate of Valley High School, Egan, Iowa, he joined the Navy in September 1961.

EMBARRASSING, BURNING

Itching?

ZEMO relieves itching fast because its special "anti-itch" medication soothes inflamed surface tissues. Get relief with the first application of soothing, medicated ZEMO—Ointment or Liquid. **zemo**

Church Directory

CULVER BIBLE CHURCH
Rev. Edward Clark, Pastor
Sunday School 9:30 a.m. Morning Worship 10:45 a.m. Young People's Service 6:15 p.m. Evening Worship 7:00 p.m. Wednesday Night Prayer Meeting and Bible Study 7:30 p.m. Thursday Night Home Bible Study 7:30 p.m.

UNION CHURCH OF THE BRETHREN
At the corner of Slate Road 17 and 108 Road. Bert Gramer, Superintendent, Shared Pastorate; Bruce Weaver, Wesley Brubaker, Larry Branks.
Sunday Church School 9:30 a.m. Worship 10:30 a.m.

BURR OAK CHURCH OF GOD
Darell G. Maddock, Pastor. Mrs. John Drang, Sunday School Superintendent.
Sunday School 9:45 a.m. Morning Worship 10:45 a.m. Senior Youth Fellowship 6:30 p.m. Junior Youth Fellowship 6:30 p.m. Evening Worship 7:30 p.m. Wednesday Hour of Power Service 7:30 p.m.

ZION GOSPEL CHAPEL
Kleve Bradley, Pastor. Marion Stine, Sunday School Superintendent. William Sheridan, Assistant Superintendent.
Sunday School 9:30 a.m. Morning Worship 10:45 a.m. Evening Service 7:30 p.m. Mid-Week Service on Thursday at 7:30 p.m.

CULVER MILITARY ACADEMY MEMORIAL CHAPEL
Rev. Calvin R. Couch, Chaplain.
Worship Service 11:00 a.m. Visitors are always welcome.

GRACE UNITED CHURCH OF CHRIST
Rev. John Krueger, Pastor.
Church School Classes 9:15 a.m. Worship Service 10:30 a.m.

EMMANUEL UNITED METHODIST CHURCH
Rev. Maurice Kessler, Pastor.
Worship Service 9:30 a.m., Church School 10:35 a.m. Wednesday: Mid-week Service 7:00 p.m., Choir Rehearsal 8:00 p.m.

WESLEY UNITED METHODIST
On the corner of School and Lewis Streets. Rev. Earl W. Sharp, Minister. Mrs. Ted Strang, Director of Christian Education.
Church School 9:30 a.m., Worship Service 10:40 a.m.

SAINT MARY'S OF THE LAKE CATHOLIC CHURCH
"The Church With The Gold Crosses"
Rev. Joseph A. Lenk, Pastor.
Saturday Mass 5:30 p.m., Sunday Mass 11:00 a.m., Religious Instruction for Young Adults 9:30 to 10:30 a.m. Sunday, Confessions before Mass.

TRINITY LUTHERAN CHURCH
Located at 330 Academy Road, Culver. Rev. Roger L. Sommer, Pastor.
Sunday Worship 9:00 a.m., Sunday School and Bible Class 10:15 a.m., Women's Guild on First Mondays 8:00 p.m. and Alternate Thursdays 7:30 p.m.

GILEAD UNITED METHODIST
Rev. Ray Kuhn, Pastor. Grover Snaffer, Superintendent.
Worship Service 10:00 a.m. (11:00 a.m. on Second and Fourth Sundays).

LEITERS FORD METHODIST
Leon Weiling, Sunday School Superintendent.
Church School 10:00 a.m., Worship Service 11:00 a.m., M.Y.F. on Second and Fourth Sundays.

LEITERS FORD CIRCUIT
Rev. Phillip Lutz, Pastor

MONTEREY METHODIST
Worship Service 9:10 a.m., Church School 10:15 a.m.

MOUNT SANTA GROVE PARISH
Rev. Mark Day is pastor of the three churches that make up the Mount Santa Grove Parish. They are:

MOUNT HOPE UNITED METHODIST
Robert C. Kline, Superintendent.
Church School 10:00 a.m., Worship Service 11:00 a.m. every Second and Fourth Sunday.

SANTA ANNA UNITED METHODIST CHURCH
Phillip Peer, Superintendent. Church School 10:00 a.m., Worship Service 11:00 a.m. every First and Third Sunday.

POPLAR GROVE UNITED METHODIST
Ellis Clifton, Superintendent. Worship Service 10:00 a.m., Church School 10:45 a.m.

MONTEREY SAINT ANN'S CATHOLIC CHURCH
Sunday Mass 9:00 a.m., Weekday Masses 8:00 a.m. Monday, Tuesday and Thursday, 7:30 p.m. on Wednesday and Friday. Saturday Masses 8:30 a.m. and 7:30 p.m. Holy Days of Obligation 8:00 a.m. and 7:30 p.m. Confessions After Wednesday and Friday evening Mass, and Saturday from 4:00 to 5:00 p.m.

FIRST CHURCH OF CHRIST, SCIENTIST
Located at 428 South Michigan Street, Plymouth.
Worship Service 10:30 a.m., Wednesday Evening Service 7:45 p.m.

ST. THOMAS EPISCOPAL CHURCH
Located at the corner of Center and Adams Streets, Plymouth. Rev. James G. Greer, Pastor.
Sunday Services, Holy Communion 7:30 a.m., Family Eucharist 9:30 a.m., Parish Nursery 9:30 a.m.

Pretty Lake Trinity United Methodist
Rev. Ronald Covey, Pastor.
Morning Worship 9:30 a.m., Sunday School 10:20 a.m.

RICHLAND CENTER UNITED METHODIST CHURCH
Rev. John Worthinger, Pastor.
Robert J. Neilans, Lay Leaders, Howard Conrad, Superintendent, Telephone Rochester 223-3751.
Worship Service 9:30 a.m. on Second and Fourth Sundays, 10:30 a.m. on First and Third Sundays, Church School at Alternating Times.

BURTON UNITED METHODIST CHURCH
Rev. John Worthinger, Pastor.
John Cessna, Lay Leader, Margaret Belcher, Superintendent, Telephone Rochester 223-3751.

Worship Service 9:30 a.m. on First and Third Sundays, 10:30 a.m. on Second and Fourth Sundays, Church School at Alternating Times, Methodist Youth Fellowship 5:30 p.m. Sunday.

For corrections or additions, please contact:

The Culver CITIZEN
Post Office Box 90
Culver, Indiana 46511

COUNTY ZONING ORDINANCE

If you violate it, it could mean \$10 to \$300 fine per day upon conviction. Find out how you might unknowingly violate it. Attend the Open Meetings at McCord Union Hall, West Jefferson, Plymouth (2 doors east of Bennett's Restaurant) Wednesdays, March 13th AND 20th at 7:30 p.m.

Conversation With A Citizen

Cole Marionettes In Town

CUB SCOUT BANQUET VISITED BY LITTLE PEOPLE!

"Only a third life size," was how he described them, but to the audience of children (and adults) they were even bigger than life. This is how Ed Merrington described his marionette actor his wife, Evelyn, was manipulating from the bridge of their portable stage.

The Merringtons, who comprise unit number one of the Cole Marionettes, visited the Culver area last week to perform for the Cub Scout Blue and Gold Banquet at the V.F.W. Hall.

Ed and Evelyn presented a beautiful production of "Beauty and the Beast" to the audience of 60 people.

The show had the sparkle of professionalism, although the performers admitted later that it was their fourth show for the day, in a week that would average more than fifteen performances.

The Merringtons have been performing for the Cole Marionettes for 29 years, touring the

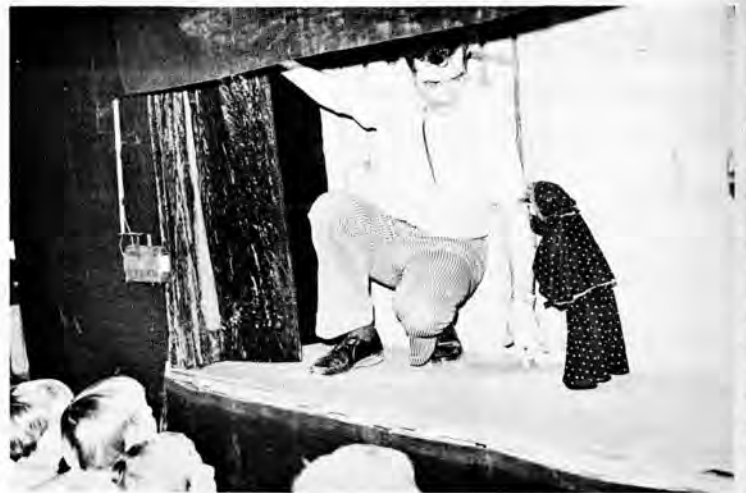
midwest from their home in Tinley Park, Illinois.

The Cole Marionettes are the original product of Mr. and Mrs. George Cole, of Lake Village, Indiana. The Coles have been mounting puppet productions for many years. They found that the joy of bringing high quality performances to school children demanded more time than they had available, so another unit was mounted to tour with a different show. Now, there are three units of the Cole Marionettes, and Mr. and Mrs. Cole stay at their home most of the year designing and building a new show for one of the units next year. The different units are organized in a franchise arrangement, with each separate man and wife troupe touring with their own stage and their own schedule of performances and their own public events.

Ed and Evelyn Merrington are the original separate unit for the Coles, and they have many memories from their years on the circuit.

"We have visited one Valporaiso school for 26 consecutive years," Evelyn says with obvious amazement. To us, this must mean that they started touring when they were about seven years old!

And not just the seven year olds in their audience last week enjoyed



RIGHT AFTER THE SHOW Ed Merrington visits the stage to show

everyone how their sense of scale is changed by the puppet show. He

looks like a giant when he appears at first! **CITIZEN photo**

the show, either, as the adults also sat in their chairs, laughing at the comedy and sitting wide eyed in the tense moments.

The Merringtons moved on their way that night, to stay in Plymouth and go on to South Bend for several performances this week. Their production next year will be "The Pied Piper of Hamelin," and who knows, maybe they will be back to Culver again next season!

We hope they do.



ED AND EVELYN MERRINGTON stand on the bridge of their huge portable stage so that Citizen readers can see what the people behind the people look like. **CITIZEN photo**



AFTER THE SHOW the fun thing to do is go backstage and look at the "actors." Here, several unidentified children (they pushed and moved so fast we couldn't get

names) look at the witch of the forest, one of the characters who leads Beauty to the Beast, who is also seen to the left. **CITIZEN photo**

This Knife and Fork Sausage Soup Makes A Satisfying Meal

A substantial and satisfying dinner can be served in a soup bowl. Are you skeptical? Sampling this savory sausage soup is believing. Serving-size pieces of large smoked sausage links, such as Italian or Polish, give stick-to-the-ribs substance and suggest that a knife and fork as well as a soup spoon be provided.

Both the sausage and a base of canned bean soup reduce the long hours of simmering required for most soups made from scratch with fresh meat, points out Reba Staggs, National Live Stock & Meat Board home economist. Other convenience foods—frozen potatoes and canned tomatoes—contribute to ease of preparation, while carrots and celery add texture and round out its wholesomeness.

Knife and Fork Soup

- 1 to 1½ pounds smoked sausage (large links)*, cut in 5 or 6 pieces
- 2 cans (11½ ounces each) condensed bean soup
- 1 can (16 ounces) tomatoes
- 1 package (12 ounces) frozen southern-style hash brown potatoes
- 2 cups water
- 1 cup sliced carrots
- 1 cup sliced celery
- ½ teaspoon chili powder
- ½ teaspoon salt

Stir together to combine soup, tomatoes, hash brown potatoes and water in Dutch oven. Add carrots, celery, chili powder and salt, cover, bring to boil, reduce heat and simmer 20 minutes, stirring occasionally. Add sausage and continue cooking slowly 40 to 45 minutes or until vegetables are tender, stirring occasionally. 5 to 6 servings.

*Sausage may be sliced before adding to soup, if desired.

THE STATE EXCHANGE BANK
 UNDER ONE MANAGEMENT
 CULVER
 PLYMOUTH
 ARGOS

"The Bank That GOOD WILL Build"

FARMERS STATE BANK
 LAPAZ

Home improvement, remodeling, sports, travel. For financing these or any other personal needs...see the interested bankers at The State Exchange Bank, Culver, Plymouth, Argos, or the Farmers State Bank, LaPaz. With money to loan they are interested in helping you arrange financing to nail down your project.

EQUAL HOUSING
LENDER

STATE EXCHANGE BANK PROMOTES THREE TO SENIOR VICE PRESIDENT

William O. Osborn, president of The State Exchange Bank, has announced the promotion of three veteran staff members including Hampton Boswell, Charlotte J. Jung, and Margaret L. Swanson from vice president to senior vice president.

Mr. Boswell, who joined the bank staff in 1935, is a member of the board of directors, treasurer of the affiliated State Exchange Finance Co., and for the past 23 years has been manager of the State Exchange Insurance Agency. Before becoming associated with the bank he was associated with the

accounting department of the James I. Barnes Construction Co., Logansport for five years and earlier with the Indiana Harbor Lumber & Coal Co., East Chicago, as bookkeeper.

A native of Wabash County, she is a member of Wesley United Methodist Church; the Lions Club, Chamber of Commerce, the Henry H. Culver Lodge, F. & A.M. #617; Plymouth Country Club, and Scottish Rite, Mr. and Mrs. Boswell are the parents of five children, Robert L., Thomas W., James B., and Mrs. Robert (Carolyn) Kline, and Susan Boswell.

A member of the board of directors, Miss Jung became associated with the bank staff in June, 1946. As vice president she has served for several years as secretary of the State Exchange Finance Co. and Building Corpora-



Margaret L. Swanson

tion, and as trust officer. A resident of Argos and Lake Manitou, she is a graduate of International College, Ft. Wayne. She is a member of the American Legion Auxiliary, Argos, the National Association of Bank Women, and the Methodist Church.

Miss Swanson, who is a director and vice president, is auditor of the bank. A Culver High School graduate, she continued her education at the Anthony Wayne Business College, American Institute of Banking, and LaSalle Extension. A member of National Association of Bank Women, she is also active as a member of the Culver City Club, the Emily Jane Culver chapter, Eastern Star, and the Women's Guild, Grace United Church of Christ. Miss Swanson is also organist for Grace Church.



Hampton Boswell



Charlotte J. Jung

Recovery Unit Meeting



OVER TWENTY VOLUNTEERS attended Saturday afternoon's organizational meeting for an Underwater recovery Unit at the Culver Eagles Lodge. The meeting brought potential volunteers together with Bill and

Nancy Smith of Elkhart, shown here talking to the assembly about the requirements for a course to be taught by the team at the Culver Military Academy pool. Response at the meeting was said to be favorable. CITIZEN photo

Corn Muffins A la Turkey - Delicious



Leftovers—or do you prefer planned-overs?—always taste better when served with something new. Especially something freshly baked like these Cranberry Corn Muffins! Combine leftover turkey (or chicken) with canned cream of mushroom soup and a package of cooked peas; ladle the hot mixture over the muffins. This is a delightfully different entree, and so easy to make because the muffins are made from a mix of course. Add a dollop of cranberry orange relish to the top of each just before baking. They're colorful, they're delicious!

CREAMED TURKEY ON CRANBERRY CORN MUFFINS
Makes 6 servings

- | | |
|---------------------------------------|--|
| Muffins: | Sauce: |
| One 12-oz. pkg. Flako Corn Muffin Mix | 2½ cups chopped cooked turkey |
| 1 egg | One 10-oz. pkg. frozen peas, cooked and drained |
| ¾ cup milk | One 10½-oz. can condensed cream of mushroom soup |
| 2 tablespoons cranberry-orange relish | ½ cup water |
| | ½ teaspoon salt |

Heat oven to hot (400°F.). For muffins, empty contents of package into bowl; add egg and milk, stirring only until dry ingredients are thoroughly moistened. Fill 12 greased medium-sized muffin cups half full. Spoon ½ teaspoon cranberry-orange relish on center of batter in each muffin cup. Bake in preheated oven (400°F.) about 15 minutes or until golden brown.

For sauce, combine all ingredients; heat thoroughly. To serve, spoon sauce over two cranberry muffins.

GRETTER'S

ACROSS from THE BANK

FOOD MART

PHONE 842 2262

100 N MAIN ST. CULVER

We Proudly Feature

TOP MEAT BUYS

<p>FRESH LEAN GROUND BEEF</p> <p>\$1.09</p> <p>LB.</p>	<p>SWIFTS PREMIUM PROTEIN CHUCK STEAKS</p> <p>LB. \$1.09</p>
<p>ELCONA PLATTER SLICED BACON</p> <p>LB. \$1.19</p>	<p>FRESH BULK—HOMEMADE PORK SAUSAGE</p> <p>LB. 89c</p>
<p>END PORTION SMOKED HAM</p> <p>LB. 89c</p>	

SAVE ON NAME BRANDS

<p>8 PACK COCA COLA</p> <p>16 OZ. BOTTLES 79c</p>	<p>HUNT'S YELLOW CLING PEACHES</p> <p>SLICED</p> <p>2½ SIZE CAN 49c</p>	<p>BANQUET FROZEN MEAT PIES</p> <p>3 FOR 79c</p>
<p>DELMONTE—#303 CAN PEAS</p> <p>4 FOR \$1.00</p>	<p>VETS 1 LB. CAN DOG FOOD</p> <p>2 FOR 25c</p>	

MORE BIG BUYS

<p>ROYAL SCOTT OLEO</p> <p>LB. 39c</p>	<p>CRYSTAL SPRINGS BUTTER</p> <p>LB. 79c</p>
<p>CALIFORNIA PASCAL CELERY</p> <p>33c</p>	<p>IVORY LIQUID</p> <p>QT. 49c</p>

SUBSCRIPTION ORDER

Name _____

Address _____

City _____ Zip _____

One Year \$5.00 Two Years \$8.50

ADD FIFTY CENTS FOR SUBSCRIPTIONS OUTSIDE INDIANA

SEND TO The Culver CITIZEN, Post Office Box 90, Culver, Indiana 46511
Please allow three weeks for entry of new subscription

LEGAL NOTICE

CLAIMS ALLOWED BY THE COUNTY COMMISSIONERS Meeting March 4, 1974

County General Fund

CLERK	
Joanne Price Van derWeele	\$ 121.20
IBM	3.00
Town & Country Press	37.00
Plymouth Office Supply	10.27
Lafayette Printing	483.00
Waddell Printing Co.	101.29
AUDITOR	
Burroughs Corp.	91.66
Lafayette Printing Co.	1,571.97
Waddell Printing	89.40
O Bixel	30.00
R Reese	15.10
TREASURER	
Pinney Bowes	139.85
H. Speyer	8.00
Jarrroughs Corp.	185.10
Lafayette Printing Co.	170.00
Plymouth Office Supply	13.60
RECORDER	
Lafayette Printing Co.	25.00
SHERIFF	
H. Phillips	9.25
Amoco	47.18
Arco	584.90
Gates & Calhoun	264.43
Plymouth Tire Co.	92.19
Berger Mfg. Co.	7.70
Jack's Uniforms	20.60
Zuckerberg Uniforms	401.88
Anca	3.00
K. Guild, M.D.	10.00
J. Kubley, M.D.	8.00
Meister Drugs	11.39
Parkview Hospital	11.75
People's Drugs	7.05
H. Phillips	929.50
Arrow Pest Control	7.00
Culligan	7.00
Simon Bros.	26.10
Shaffer Construction Co.	19.44
COUNTY HOME	
Treasurer, Mar. Co.	8.00
United Telephone Co.	40.38
A-1 Disposal, Inc.	5.00
NIPSCO	278.87
Doly's Electric	930.10
Morris Lumber Co.	7.74
G. & R. Enterprises	88.01
Layne Northern Co.	416.10
Standard Plumbing & Heating Co.	515.54
Holderman Farm Management, Inc.	99.02
Farm & Home Center	122.51
Laketon Asphalt Refining, Inc.	1,263.81
Ann's Fresh Eggs	143.40
Dave & Ray's Market	83.99
Plymouth Dairy	336.10
Price's Abattoir	468.47
Treasurer, State of Ind.	2.75
Harrison House	736.30
Lake City Wholesale	122.60
Simon Bros.	330.30
Stanz Cheese Co.	122.95
Culligan Soft Water	40.00
Economics Lab., Inc.	239.65
Med-Equip. Sales Corp.	9.00
Pioneer Manufacturing Co.	47.95
Precision Lab., Inc.	167.10
Sherwin-Williams Co.	95.72

DRAINAGE BOARD	
O. Paul Stackhouse	43.90
Plymouth Office Supply	1.40

WEIGHTS & MEASURES	
G. Schultz	130.65
Swani Publishing Co.	18.95
Town & Country Press, Inc.	26.00

COMMISSIONERS	
W. Weatherhead	83.20
The Bremen Enquirer	181.54
Bourbon News Mirror	8.62
Pilot News	212.68
Frederic Luther Co.	44.93
Plymouth Veterinary Clinic	240.00
Blue Cross-Blue Shield	992.53
Parkview Hospital	13,299.50
Ind. Girls' School	1,557.36
Grossman Funeral Home	100.00
Hemir Funeral Service	100.00
Johnson Funeral Home	100.00
Mishler Funeral Home	200.00
M. Blue	18.00
E. Stanley	200.00
H. Speyer	3.00
State Board of Accounts	1,190.00

COURT HOUSE	
United Telephone Co.	532.93
City of Plymouth	93.85
NIPSCO	1,453.00
Buchtel & Son's Hdwe.	16.53
A-1 Disposal, Inc.	10.00
Delp Electric, Inc.	18.00
Great Lakes Supply & Chemical	45.09
Simon Bros.	66.45
The State Manufacturing Co.	100.60
Xerox Corp.	362.68
Home-A-Rama, Inc.	56.95

JAIL	
K. Guild, M.D.	10.00
J. Kubley, M.D.	8.00
Meister Drugs	11.39
Parkview Hospital	11.75
People's Drugs	7.05
H. Phillips	929.50
Arrow Pest Control	7.00
Culligan	7.00
Simon Bros.	26.10
Shaffer Construction Co.	19.44
Treasurer, Mar. Co.	8.00
United Telephone Co.	40.38
A-1 Disposal, Inc.	5.00
NIPSCO	278.87
Doly's Electric	930.10
Morris Lumber Co.	7.74
G. & R. Enterprises	88.01
Layne Northern Co.	416.10
Standard Plumbing & Heating Co.	515.54
Holderman Farm Management, Inc.	99.02
Farm & Home Center	122.51
Laketon Asphalt Refining, Inc.	1,263.81
Ann's Fresh Eggs	143.40
Dave & Ray's Market	83.99
Plymouth Dairy	336.10
Price's Abattoir	468.47
Treasurer, State of Ind.	2.75
Harrison House	736.30
Lake City Wholesale	122.60
Simon Bros.	330.30
Stanz Cheese Co.	122.95
Culligan Soft Water	40.00
Economics Lab., Inc.	239.65
Med-Equip. Sales Corp.	9.00
Pioneer Manufacturing Co.	47.95
Precision Lab., Inc.	167.10
Sherwin-Williams Co.	95.72

CORONER	
J. Deaton	30.00
G. Deaton	2.60
PROSECUTING ATTORNEY	
D. Holmes	40.00
J. Fitzmaurice	3.50
United Telephone	53.53
U. of Notre Dame Law School	737.10
J. Holmes	100.00
IBM	150.00
ASSESSOR	
O. Bixel	828.46
M. Curtis	13.20
Lafayette Printing Co.	81.50
GERMAN TWP. ASSESSOR	
P. Andrews	6.70
LaFree Lumber Co.	300.00
ELECTION BOARD	
G. Miles	20.00
G. Davis	29.44
PLAN COMMISSION	
C. Middleton	31.00
M. Morrison	720.00
Ind. Plan. Ass'n	27.00



VERSATILITY IS THE KEY ingredient to be found in the 1974 Dodge Ramcharger. This rugged, four wheel drive vehicle is useable in both regular and off road conditions. The new Ramcharger boasts Dodge Truck's NP 203 full-time, four-wheel drive transfer case and four V-8 engines. Ramcharger goes on sale in March.

Research Inst.	36.00	Lloyd C. France, MD	315.00
Big Blue	129.99	Ind. Univ. Hosp.	152.15
Berger Farm & Welding	57.52	K. C. Kim, MD, Inc.	382.00
Bear-Cat	1.40	Memorial Hosp.	1,335.39
Zehner Mower Ser	16.15	St. Joseph's Hosp	925.45
Buchtel's Hardware	103.98	Treas. Mar. County	350.00
Holland's Hardware	17.81	Treas. State of Ind.	4,336.97
Smith-Alsop	2,622.00	Treas. State of Ind.	722.06
Sherwin-Williams	12.54		
Wekony Distrib	78.92		
Monarch Laundry	136.39		
Dave & Ray's Supermkt.	10.86		
Dalig Chem. Corp.	37.54		
Ridge Co.	54.92		
St. Joseph Mater. Co.	736.13		
Aggre. Ser.	469.65		
J & M Gravel	986.05		
France Stone Co.	3,363.13		
Engineering Aggre.	4,789.89		
C. L. Morris Lumber	68.08		
Walter Hampton	6.00		
McCormick Leasing Div.	1,400.00		
Harvey Hepler, Sr.	25.00		
Motorola, Inc.	231.50		
Emer. Radio Ser.	100.00		
City of Ply.	33.00		
NIPSCO	529.13		
Gates & Calhoun	50.81		
Labas Chev	1,485.20		
United Auto Supp	274.01		
Deed's Equip. Co.	956.48		
Reese Equip. Co.	19.30		
Kitchen Mach. Inc.	100.35		
Dick L. Woolley	217.36		
Ocean Restim	47.25		
Motor Fuel Tax Div.	270.48		
Marathon Oil Co.	468.05		
Amer. Oil Co.	1,493.47		
Ply. Tire Co.	2,222.70		
MacAllister Mach.	104.74		
Kar Products, Inc.	55.47		
W & W Truck	347.12		
Hite Equip. Repair	34.86		
Wiers Truck Ser.	102.76		
Berkey's Auto Prits	164.87		
Ply. Glass & Paint	2.75		
McCarthy GMC	943.65		
International Harvester	21.70		
Amer. Steel Supp	2,236.74		
Galbreath & Spring	80.00		
Power Brake, Inc.	106.00		
Breedings Farm Supp.	30.65		
Felix & Assoc.	106.00		
Blue Cross/Blue Shield	453.09		
Ply. Lumber Co.	163.22		
Fruhauf Dist. Co.	3,633.00		
Industrial Trans.	15.00		
Ralph C. Lentz	10.40		

Filed this 27th day of February, 1974
Robert Reese
Marshall County Auditor

MOTHER GOOSE DOT PUZZLE

Why is the snow like a maple tree? The Answer Because it

the spring



Let us help you get to know your new community as quickly as possible. Our hostess will call on you and present you with gifts, greetings and useful information.



Call Charlene Strang

Telephone 842-2986

COUNTY HIGHWAY

Lentz, Ralph C.	875.00
Kuhn, Norma	508.33
Mast, Lucille	237.50
Alderfer, W. C.	652.05
Baum, R.	659.93
Davis, D.	677.25
Fenimore, R.	652.05
Fritz, D.	678.83
Gibbons, Max	705.60
Gongwer, Albert	653.63
Grossman, P.	667.80
Hughes, R.	667.80
Jefferies, R.	669.38
King, F.	667.80
Lemler, W. R.	685.13
Lindsey, L.	670.95
Miley, M.	667.80
Miller, G.	666.23
Miller, Max	667.80
Muffley, L. E.	667.80
Powers, C.	652.05
Richter, T. K.	666.23
Samuelson, J.	664.65
Swihart, R.	677.25
Wilcox, S.	727.65
Berglund, L.	699.60
Deisch, J.	683.10
LeVoy, J. K.	683.10
McGriff, E.	683.10
McGriff, J. A.	709.50
Ruff, R.	691.35
Cook, D.	655.20
Kralovansky, J.	699.60
Grossman, Wayne Jr.	711.78
Barrett, J.	724.50
Fishburn, L.	714.15
Gibbons, F.	658.35
United Tele.	100.87
Ply. Office Supp.	55.72

ACCUMULATIVE BRIDGE

Logansport Metal Culvert	830.36
--------------------------	--------

WELFARE DEPARTMENT

Irene J. Berglund	33.25
Margaret DePrez	11.08
Richard H. Furst	62.96
Mary C. Kaufman	7.77
Donald E. Patton	12.75
Edna M. Reed	111.07
Barbara L. Rockaway	18.21
Doris Jean Smith	44.97
United Tele.	219.23
City of Plymouth	7.72
N. I. P. S. Co.	85.76
Anco Office Equipment	31.99
I. B. Reed	26.73
Plymouth Office Supply	16.12
Xerox Corp.	60.00
Bosworth's Home Shop	39.15
Buchtel & Son's	2.77
Ed-U-Press	5.00
Blue-Cross & Blue Shield	180.44
Grossman Funeral Home	400.30
F. W. Bosworth Co., Inc.	28.50
F. L. Babcock, OD	5.00
F. W. Bauer, OD	50.50
Walter R. Burns, DDS	43.00
James O. Coursey, Jr. MD	12.00
Kent Guild, MD	21.00
J. N. Hampton, M.D.	6.00
Parkview Hosp.	13.80
Ply. Comm. School	7.95
Walter J. Barkes, Jr., DDS	16.00
Family & Children's Ctr.	1,490.00
Group Treatment Home	10.00
D. S. Houser, MD	112.00

FIREWOOD !!
SAVE FUEL
SAVE MONEY
CUT YOUR OWN.



HOMELITE®
XL-2 CHAIN SAW
TWO TRIGGERS
ONE for big cutting jobs
ONE for little pruning jobs
LIGHTWEIGHT • POWERFUL • RUGGED
Only **\$119.95**
MANUFACTURER'S SUGGESTED PRICE
Look for your local Homelite dealer in the **YELLOW PAGES.**

Remember This?

CULVER MAIN STREET view is shown in this old picture from a black and white post card given to the Citizen by Verl Shaffer, local

barber. This shows the 100 North Main block, and other stores to the south of that block. The date of the picture is unknown.



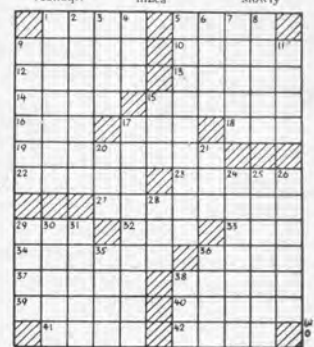
Nick's Favorite Crossword

ACROSS

- 1. Fuse partly
- 5. Vipers
- 9. European kite
- 10. Distributes
- 12. Levelled to the ground (var.)
- 13. Craze
- 14. Italian volcano
- 15. Literary theft
- 16. Greek letter
- 17. Distress call
- 18. Affirmative reply
- 19. Turtle
- 22. Missile weapon
- 23. Vexed
- 27. Famous Apache chief
- 29. Signs as correct
- 32. A vandal
- 33. Male adults
- 34. Sacred choral composition
- 36. Apple center
- 37. Rhee's country
- 38. Plunge forward
- 39. Turf
- 40. Hautboys
- 41. Health resorts
- 42. Game fish

DOWN

- 1. Aircraft carrier (slang)
- 2. Catch again
- 3. Notion
- 4. Spread
- 5. Grass to dry
- 6. Entrance
- 6. Scorch
- 7. Philippine island
- 8. Cut view
- 9. Salutes
- 11. Speaks
- 15. Hawaiian fool
- 17. Disgruntled persons (colloq.)
- 20. Child
- 21. Sea eagle
- 24. Dressing gowns
- 25. Comes to view
- 26. Recipients of gifts
- 28. Pirates' drink
- 29. Trees
- 30. Recognizes
- 31. Thong
- 35. Wife of Zeus
- 36. Castro's land
- 38. Toss slowly



STUCK FOR A GIFT IDEA? SEND A GIFT A WEEK!

ORDER A GIFT SUBSCRIPTION
Gift Cards Sent At No Charge

Gift Of _____

Name _____

Address _____

City _____ Zip _____

One Year \$5.00 Two Years \$8.50

ADD FIFTY CENTS FOR SUBSCRIPTIONS OUTSIDE INDIANA

SEND TO The Culver CITIZEN, Post Office Box 90, Culver, Indiana 46511
Please allow three weeks for entry of new subscription

Stomach Upset by Gas and Acid?

Di-Gel® with Simethicone quickly relieves both acid and gas. This unique discovery breaks up and dissolves trapped gas bubbles. Your relief is more complete because Di-Gel takes the acid and the gas out of acid indigestion. When you eat too well, demand Di-Gel. Tablets, liquid. Product of Plough, Inc.

Gas and heartburn?

Di-Gel® contains a unique anti-gas ingredient, Simethicone. This unique discovery breaks up and dissolves trapped gas bubbles. Your relief is more complete because Di-Gel takes the acid and the gas out of acid indigestion. Get Di-Gel tablets or liquid today. Product of Plough, Inc.

Weekend Traveler

Sports Cars In The Spring

SPORTS CARS IN REVIEW AT GREENFIELD VILLAGE

The annual Sports Cars in Review has for 22 years been a highlight of the special events calendar at Greenfield Village and Henry Ford Museum. Displayed along the unique setting of the Museum's Street of Early American Shops March 8th through 31st, this year's show features 65 cars from six countries tracing a full 70 years of sports car history.

The theme of the 1974 Review is "Great Italian Sports Cars," and nearly a third of the cars in the show are representatives of the great Italian manufacturers. They range from a 1904 Fiat Grand Prix Racer to contemporary models and include such names as Alfa Romeo, Maserati and Ferrari.

This year, Sports Cars in Review also hosts a series of "mini shows" incorporated into the overall exhibit. In a feature titled

"Safety-Fast," a collection of vintage and modern MGs depict the development of this popular sports car from its beginnings in 1925 to the present. A highlight of this display is a 1953 MG-TD chassis and running gear exhibited to illustrate the first major MG design change since the classic days of the thirties and to show the new concept in suspension and chassis construction. A full MG-TD is also on display.

A unique exhibit is located in the Special Exhibit Area near the MGs. Five cars, ranging from prototypes through regular production models to specially modified versions, trace the development of the design of a family sports car. Large-scale drawings illustrate the design problems encountered and point up how they were solved. In the same area, auto racing enthusiasts can examine a special display of required safety equipment specified by the Sports Car Club of America plus a variety of tires that are used on different types of racing cars.

Still another display features racing cars. Outstanding among them is a 1958 Ferrari Testa Rossa 250 from the Museum's collection. Among its other accomplishments, this victorious veteran of international Grand Prix racing, driven by Peter Collins and Phil Hill, broke all previous records in taking first place in the "12 Hours of Sebring" in 1958.

A special sports car film, "The Titans," is shown in the Museum Theater several times each week and throughout the run of the Review at no additional charge. Using actual motion picture footage from automobile races, the film illustrates the dominance of the great Italian cars, the Alfa Romeo and the Maserati, in international racing in the early thirties.

The Review's other special features include a lecture by Brock Yates, senior editor of "Car and

Driver" magazine, on March 15th; a sportswear fashion show on March 22nd and a special feature film presentation on March 28th.

The regular Museum hours will be extended for Sports Cars in Review. On Fridays and Saturdays, the Museum will remain open until 10:00 p.m., on Sundays until 6:00 p.m. Mondays through Thursday, the regular hours of 9:00 a.m. to 5:00 p.m. will be in effect. There is no extra charge for the Review or any of the special features beyond the regular Museum admission of \$2.25 for adults and \$1.00 for children 6 through 14. Children under six are admitted free. Greenfield Village and Henry Ford Museum are incorporated as the Edison Institute, a non-profit educational institution.

GIRL SCOUT SHOW NEXT WEEK AT SCOTTSDALE MALL

Girl Scout Week, March 10th to 16th, is the 62nd anniversary of the Girl Scout movement in America. During this celebration, over 3 million girls will be involved in various activities designed to inform the public of the Girl Scout program and philosophy. One such activity will be in South Bend, where girls will present displays and exhibits throughout the week at Scottsdale Mall.

Seven types of activity are emphasized during Girl Scout Week: Girl Scout Sunday, Homemaking (Monday), Citizenship (Tuesday), Health and Safety (Wednesday), International Friendship (Thursday), The Arts (Friday), Out-Of-Doors and Girl Scout Sabbath (Saturday).

Membership in Scouting is open to all girls, age 6 through 17, who subscribe to the Girl Scout Promise and Law. Scouting emphasizes deepening awareness of self as a unique person of worth, developing values to give life meaning and direction, contributing to society through personal talents and cooperation with others, and relating to others with increasing skill, maturity and satisfaction.

The Girl Scout movement in America is perpetuated through the efforts of over 600,000 registered adult volunteers. Singing Sands Council, which comprises 10 counties in Northern Indiana and Southwestern Michigan, serves 13,650 girls with 2000 adult volunteers. Anyone wishing to volunteer or to find out more about the Girl Scout program is invited to call the Council office in Niles, 684-3500.

Student Delegates



TO ATTEND CONFERENCE from Culver Community High School, these students have been chosen as delegates to the 1974 Indiana Youthpower Conference to be held in Indianapolis this week.

Shown here, left to right, are: Ginger Peterson, delegate from the state Sunshine Organization; Kim Thompson, and Martin McCombs, delegates for the Indiana State Health Careers organization.

Miss Peterson is the daughter of Mr. and Mrs. Amos Peterson of

Monterey. Miss Thompson is the daughter of Mr. and Mrs. John Thompson of Culver. Mr. McCombs is the son of Mr. and Mrs. James McCombs of Culver.

Shown with the students is Connie Ervin, CCHS Nurse and sponsor of the local Health Careers chapter.

The state-wide Youthpower Conference is sponsored each year by the food producing and processing industries, and is now entering its 14th year. CITIZEN Photo

BARENIE PREPARED TO SHOCK CLASS AT ANCILLA COLLEGE

Have you ever zapped yourself on an electrical wire and vowed never to mess with electricity again? Have you ever wanted to tackle a wiring job but were afraid to try? Have you ever wondered if the electrical wiring in your home or office is safe? When something goes wrong with a circuit do you immediately call an electrician? Do you have questions about electricity that remain unanswered? Well, Ancilla College is prepared to help you solve many of these problems.

Mr. Kenneth Barenie, superintendent of Ancilla Domini complex near Donaldson, will conduct a basic electrical wiring seminar on Wednesday evening, March 20th, at 7:30 p.m.

The course will be of special

interest to homeowners, employees of businesses who do electrical work, carpenters, farmers, housewives and all do-it-yourselfers.

Mr. Barenie will begin with the basics of electrical wiring and develop the subject as far as the class wants to go. No grades or tests will be given and emphasis will be placed on the practical.

Ancilla College is located west of Plymouth and just south of Route 30 near Donaldson. For additional information call (219) 936-9936. Reservations will be limited for this very interesting and helpful seminar.

NOTICE
NEW HATBANDS REPLACED IN GENTS' HATS. A SPECIAL SERVICE DURING THE MONTH OF MARCH ONLY. Albert The Cloth Doctor, Phone 842-3513.

For **SINUS** Discomfort TAKE **sinarest**



SPECIFICALLY FORMULATED FOR SINUS HEADACHE AND CONGESTION

PENWALT CORP. PHARMACRAFT

Box 1212 Rochester, New York 14603

Helps Shrink Swelling Of Hemorrhoidal Tissues

caused by inflammation

Doctors have found a medication that in many cases gives prompt, temporary relief from pain and burning itch in hemorrhoidal tissues. Then it actually helps shrink swelling of these tissues caused by inflammation.

The answer is Preparation H®. No prescription is needed for Preparation H. Ointment or suppositories.

New Gifts At The Little Gallery!

Jewelry, Import Gifts And Much, Much More

All Ladies Winter Clothing Has Been Reduced To 10% Below Cost. Tremendous Savings are Available for a Short Time Only.

The Little Gallery

211 East Washington Street Culver, Indiana



SALE CLOSE-OUT SALE CABINETS AND VANITIES

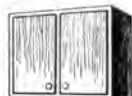
30-40-50% Discounts



All Close-outs Cash & Carry



BIG DISCOUNTS ON CABINET AND VANITY TOPS



Pre-Finished Panelings and Moldings In Stock at Our Regular Low Prices!

We carry a full line of materials for the "Do-It-Yourselfer"

BABCOCK Lumber & Supply

GAS TOO MUCH? WHY DRIVE FOR PARTS? CALL US INSTEAD!

Overnight delivery available from five area warehouses gives you ready access to nearly every automobile need...

CULVER AUTO SUPPLY

Call Us First — 842-3658

THE CULVER CRITIC

Busy Culture Scene

MANY GOOD SHOWS

FOR CULVER RESIDENTS
This past week saw many events worth the time and interest of Culver residents, including a puppet show, two theatre productions, and a visiting dance company.

"Tartuffe," a strange but funny comedy by Moliere, was presented by The National Players at the Epley Auditorium as part of Harvey Firari's Concert Series.

The presentation was polished and nicely staged, fitting the auditorium well. Lighting was excellent, and the performance had the general polish necessary for such a play.

While the dialogue seemed a bit slow at times, as the many characters bickered, argued and schemed, the full house seemed to enjoy the spectacle of the period costumes, the almost melodramatic plot, and the characterizations constructed by the cast. "Tartuffe" was high quality fun on stage.

The Cole Marionettes were brought to Culver by the Cub Scouts, who engaged this experienced troupe for their annual Blue and Gold Banquet. While the performance was not open to the public, the high quality show deserves mention here, because a professional puppet show is as much theatre as a production by live actors. There is more about this group in another portion of this issue, so nothing more need be said here.

Theatre 74, the dramatic group which represents the student efforts of the Culver Military Academy and the Culver Academy for Girls, presented a fine play, "The Physicists" last Friday and Saturday evenings in the Epley Auditorium. This play, by Friedrich Durrenmatt, is a dramatic tragedy of sorts, although it might as easily be termed a mystery.

The action takes place in a private German sanatorium, and involves four main characters - three patients and the head Doctor. The power-crazed Doktor von Zahnd was capably portrayed by Pam Hirsch. Dr. Mobius was Don Woodard, Einstein was Mark Swisher, and Newton was Harold Clarke. All four of these principals presented an evenly matched performance, supported by a large cast of policemen, nurses, doctors and guards.

The various murders, the many twists in the ironic plot, and the atmosphere of the sanatorium were all presented with sophistication by the high-school age cast.

The set was designed by Mark Swisher, who managed to convey the monotony of a medical institution without boring the audience. Unfortunately, the effective set was slightly interrupted by stage braces

that could be seen when the various doors were opened.

Harvey Firari managed to give his students a challenging script which was ably executed (no pun intended), and the special makeup by Gordon Uyttebroeck greatly helped the illusion of age needed in the play.

The performance was free, and those who have not as yet taken advantage of the student productions should do so at their next opportunity.

One interesting element that made the performance as much an educational experience as a theatrical performance was a reprise of the final scene of the play in the original German. Performers for this segment were Colonel Uebel, Lawrence Krauser, Tom Swisher, and Mark Swisher.

Very Interesting!

ELEMENTARY SCHOOL LUNCH MENU

Monday, March 11th—Ravioli, mixed vegetables, peanut butter sandwich, bread and butter, carrot sticks, bar cookies, milk.

Tuesday, March 12th—Pork chops, buttered corn, bread and butter, cottage cheese, pineapple, milk.

Wednesday, March 13th—Barbecue hamburger, dill pickles, buttered peas, macaroni salad, chocolate brownies, milk.

Thursday, March 14th—Beef stew, bread and butter, lettuce salad, pears, milk.

Friday, March 15th—Ham and beans, corn bread and honey, carrot sticks, bread and butter, juice, applesauce, milk.

HIGH SCHOOL LUNCH MENU

Monday, March 11th—Tomato soup, crackers, cheese slices, ham salad or peanut butter sandwich, apple crisp, milk.

Tuesday, March 12th—Barbecue hot dog, French fries, buttered corn, pineapple cobbler, milk.

Wednesday, March 13th—Pork and gravy, mashed potatoes, cabbage salad, cranberry sauce, fruit, bread, butter, milk.

Thursday, March 14th—Pizza burgers, mixed vegetables, macaroni salad, Jello with fruit, milk.

Friday, March 15th—Chicken pot pie, lettuce salad, peach caki, bread, butter, milk.

NOTICE
NEW HATBANDS RE-
PLACED IN GENTS' HATS. A
SPECIAL SERVICE DURING
THE MONTH OF MARCH
ONLY. Albert The Clothes
Doctor, 842-3513.

RECOVERY EQUIPMENT AVAILABLE FOR USE WITHOUT CHARGE

Residents have been reminded by Earl Eckman of the Culver Lions Club, and James D. Bonine of the Bolmine Funeral Home, that many items needed for recovery from various illnesses and injuries are available locally.

The Lions Club, in cooperation with the Bonine Funeral Home, has placed hospital beds, walkers, wheel chairs, crutches, canes, bedside tables, commodes, and other items with Mr. Bonine for distribution to those who need them for limited periods.

Individuals who have need of this service are encouraged to call Jim Bonine or a member of the Culver Lions Club.

This is a much-used service. Anyone who has an unused recovery item in their home might also consider donating it to the pool, to assist in providing even more people with these needed items.

HELP AVAILABLE FOR "NEW" GARDENER

Many Americans tried their hand at vegetable gardening for the first time last year and more are expected to join the "grower" ranks this spring.

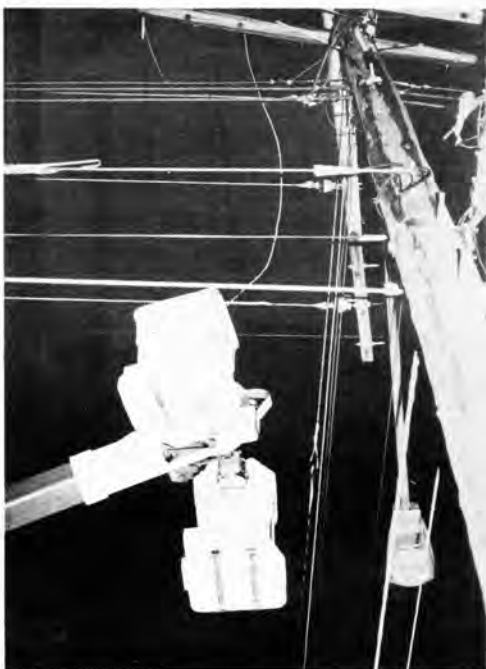
For those "new to the game," Indiana Cooperative Extension Service publication HO-101, "Recommended Vegetable Varieties" should prove profitable.

This publication provides a brief word about a particular vegetable and lists those varieties most suitable to Indiana soils and weather.

Many vegetables start from seed, but a few are propagated by crowns and roots. Still others are more conveniently started from plants (transplants) than from seeds. This is explained in the publication.

Single copies, obtainable at county Extension offices or by writing to Mailing Room, AGAD Building, Purdue University, West Lafayette, IN 47907, are available without charge to Indiana residents.

Power Failure



WHERE DO YOU GO TO PHOTOGRAPH A POWER BLACKOUT? Well, we went to find the NIPSCO truck, and we found it repairing the wires that fell as a result of high winds and heavy rain last weekend. Walking around town looking for

the repair crew we noticed many houses with the warm glow of candles and lamps. It looked very nice, and the breakdown wasn't all that inconvenient at that!

CITIZEN photo

LICENSE PLATES BY MAIL!

The Bureau of Motor Vehicles has mailed out more than 3.3 million pre-printed registration forms which will enable Hoosiers to purchase their 1974 license plate by mail, said Commissioner Ralph W. VanNatta.

VanNatta said over 70 thousand forms were returned to the Bureau because of bad addresses. These included cases where people had moved and improperly entered addresses.

If the person has not received a form by now, he will not, VanNatta said.

The number of returned forms is normal for such a state-wide mailing.

"Reactions to the mail-in service has been excellent, surpassing our expectations. The branches have been busy handling the mailed in requests and report lines are down this year," the Commissioner said.

The Bureau expects at least half the forms mailed out will be used either to purchase plates by mail or in person at the branch.

February is the deadline for private passenger cars belonging to people whose last name begins with the letters A to C to purchase their plates and also the deadline for all trucks to be plated.

People who do not receive a pre-print should use their 1973 registration copy they carry in their vehicle to obtain a plate at any of the 187 branches in the state.

SHYSM FEMININE SYRINGE

THE MODERN, CONVENIENT APPROACH TO FEMININE HYGIENE

ShySM is the unique feminine syringe. It expands to hold two quarts of your favorite solution. Convenient to use - no hoses, no hang-ups... easy to store... tucks away discreetly. ShySM feminine syringe is available at leading drug, discount and department stores.

Simplicity

How-To Books

Everything you always wanted to know about *

- Needlework & Crafts
- Tailoring
- Home Decoration
- Sewing For Men & Boys
- Sewing For Children
- How-To-Sew For Teens

In The Fabric Barn at

THE *Kelly* SHOP
Culver

*Don't Be Afraid To Ask!

Hallmark

ST. PATRICK'S DAY CARDS

Mr. T's

PHONE 842-2400

Rexall DRUGS

CULVER, INDIANA

PERSONAL SERVICE PHARMACY

PSP

Fannie May
KITCHEN FRESH CANDY

CULVER NEWS AGENCY



School Board

SCHOOL BOARD MEETING

The Culver Community School Corporation Board of Trustees met in regular session March 5th at the Superintendent's office. The meeting opened with a presentation by Mrs. Barbara Winters, High School Home Economics teacher, on the function and duties of a dietitian in a school system such as Culver's. She stressed the importance of the dietitian in unifying the four cafeterias in the system for maximum economy and efficiency, and said that planning menus to be similar at all cafeterias would save in food and manpower costs. She also stressed that the position of dietitian for the school corporation would have to be a full time job because of the size of the system.

After answering questions from the Board and Superintendent on possible overstaffing at the high school and cost of hiring a dietitian versus cost of hiring a home economics teacher with nutrition training, Mrs. Winters ended her presentation and the Board moved to request that Mr. Allen confer further with Mrs. Winters in drawing up a job description for a potential employee for this job, noting that a decision must be made before the end of the current school year.

In other business, the Board voted to present a compromise proposal to a request by Mr. John Strucker, driver for Special Education Student driver, for an increase in his salary due to increased costs. Mr. Strucker is presently paid \$12 per day for his services, and requested a raise to \$18 per day. The Board authorized Mr. Allen to present Mr. Strucker with a \$10 per day figure.

Superintendent Allen then reported to the Board on the activities of the JESSE (Joint Services Program In Special Education) program, in which ten school corporations in this area participate. Mr. Allen is chairman for the group this year. He explained that Jesse is not connected with the Marshall Starke Development Center, and that the services of the two do not overlap. He also briefly explained Culver's role in the program. Culver provides three classrooms, two in the junior high building and one in the senior high, for which the Corporation is reimbursed at a rate of \$500 per year per room. Students using the Culver facilities come from Argos, Plymouth and Knox, as well as from Culver. Mr. Allen also presented a plan which had been discussed at a meeting of the joint services group regarding transportation of the handicapped children involved. A plan to contract with a Fort Wayne firm is being considered, whereby the firm will supply ten-passenger vans and hire local drivers who will keep the vans at their homes when not in use. The vans then could be used for other school-related functions at extra cost.

Mr. Allen mentioned that JESSE is considering the feasibility of operating as an independent agency, but that no plans are definite yet.

Board member Harold Fitterling reported on the cost of a monthly mailing from the school corporation to families in the community. With special non-profit permits now available, a 2 oz. mailing would cost the school corporation about 1.7¢ apiece. Several suggestions were presented on how to compile the newsletter and what to include in one.

Mrs. Sue McCombs inquired from the audience about the possibility of advance publication of School Board agendas in the Citizen, and was informed by Mr. Allen that the Citizen's deadline made such publication impossible. Mrs. Bernadette Zoess then com-

mented from the audience that it might be possible to publish agendas in the Plymouth Pilot, since deadlines aren't as restrictive in the case of a daily paper. The Board noted that there would still be deadline problems, since some people receive the Pilot by mail. It was also noted that not all families in the school corporation take the Plymouth daily, particularly those who live in other counties. Mrs. McCombs then asked if it would be possible to have copies of the agenda available at the Superintendent's office Monday before each meeting day. Board member Paul Snyder, Jr. observed that in the past this had been done, and copies of the agenda posted in various public places such as the bank and Post Offices in the corporation. Board president Ralph Winter stated that he was opposed to such advance publication of proposed agendas, saying that "people come to fight" when they see certain items on agendas. Mr. Allen noted that people often place "interpretations" on phrases contained in agendas that may be taken the wrong way. Board member Fitterling noted that members are required to have

copies of agendas 72 hours in advance of meetings, which would be the Saturday prior to a Tuesday meeting. It was noted that because of slow mail service, some Board members do not receive their agendas till Monday. It was suggested that a partial agenda might be included in a monthly newsletter, along with a calendar of events. Board member Snyder proposed that the Board and Mr. Allen pursue the possibility of a newsletter further.

Mr. Allen then shared with the Board a communication received from School Nurse Connie Ervin on the Drug Abuse Seminar she attended with a team of representatives from the school corporation recently. Mrs. Ervin expressed the desire to share their experiences with the rest of the teaching staff of the corporation, possibly calling a day off to do so. Mrs. Ervin expressed in her letter her thanks to the Board for authorizing the attendance of the group, describing the experience as "most rewarding."

Board member Fitterling reported on a meeting he attended with Mr. Snyder sponsored by COPAD and discussing the recent Jaycees

survey with other town organizations. He shared with the Board his observations on the opinions expressed in the survey.

The Superintendent noted that he had personally inspected a slide at the Junior High that members of the Maxinkuckee Junior Womens Club had reported unsafe at a previous meeting. Mr. Allen found the slide to be set in cement and secure.

The Board next discussed funding for future budget items, including teacher contract renewals with a possibility of requests for salary increases on the part of teachers. Mr. Allen was asked to have more definite figures available by next week.

After discussion of other items, the meeting was adjourned. The School Board will meet in closed session Tuesday, March 12th at 7:30 p.m. to hear a report and recommendations by Athletic Coach Ken Hass concerning his staff.

**Sell It Fast
With A Citizen
Want Ad**

MAGIC MADE EASY



THIS BOX IN THE CLASSIFIED SECTION COSTS ONLY \$1.25! SHOULDN'T YOU USE THE CITIZEN?



Replace the old one now!

If your old stove is getting you down why not replace it with a modern, easy-to-use new gas range. It will give you time-saving features that will help you operate more efficiently in your kitchen. Features like the burner-with-a-brain which saves gas energy, the automatic rotisserie and the cook'n hold oven.

And what a work-saver the new continuous cleaning oven is! It actually cleans itself automatically while it's roasting or baking. All this without using additional gas energy.

Plan now to put a new gas range into your future.

See new models at your appliance store or a NIPSCO local sales office.

**NIPSCO Energy—
Use It Wisely!**

**Northern Indiana
Public Service Company**



THE CITIZEN BILLBOARD

Classified Advertising Rates Phone 842-2297
 Up to 25 words \$1.00 2 Weeks \$1.80 1 Week \$1.20 1 Week \$1.20
 Up to 30 words \$1.80 2 Weeks \$3.00 1 Week \$2.00 1 Week \$2.00
Cash In Advance For Classifieds, Please.

PERSONALS

CARD OF THANKS

I would like to thank all of those who were so kind to me during my recent period of loss. Your many kindnesses will be forever remembered.
 Robert L. McKee

CARD OF THANKS

During our recent time of bereavement we have been shown many, many kindnesses. This is a debt which we shall never be able to repay, and we thank the many who shared our loss with us.
 Mrs. Solon L. Emery
 Mr. & Mrs. S. Lane Emery and Family

SALE

FELKE FLORIST

Plymouth
 Call Us Collect For
 Flowers For Any
 Occasion
 We are as close as your phone
 936-3165 COLLECT TFN

Hudson Typewriter Service
 103 West LaPorte Street, Plymouth
 Sales - Service - Rentals, Typewriters and Adding Machines Repairs on all makes Royal Portable dealer
 Phone 936-2728 TFN

COMPLETE SERVICE—Rug cleaning any size, bulk cleaning professionally spotted, garments repaired-altered-restyled, Suits individually tailored.
 CULVER CLEANERS, Charles and Mary Werner Ricciardi, 842-2686 8012

Thomas Real Estate

Gerald Thomas
 Broker
 Virginia Thomas
 Salesman

Before Deciding, talk with us.
 321 West Terrace Parkway
 Culver 842-2311

CARPETS CLEANED FREE!! When you purchase a new vacuum cleaner, Call me for details. Leroy Davis 842-2219.

Real Estate C.W. Epley

450 Forest Place, Culver
 Phone 842-2061
 Sales Appraisals TFN

MATURE TIMBER - we buy logs and standing timber for top prices within 50 miles. Precision Pallets and Skids Inc., Walkerton, Indiana 46574. Phone 586-3068 Days, 586-3052 or 586-2688 Nights. My31

Powers Realty



Follow The Key!

Lake Sales and Rentals
 Town, Farm, Commercial
 Phones:
 Culver 842-2710
 Plymouth 936-3897

Fat? Overweight? Try the Diadex plan—Reduce excess fluid with Fluidex no prescription at McKinnis Pharmacy 6x8013P

WANTED TO BUY - Used pontoon raft. Will consider aluminum 16' or longer only. Call 842-2598 or write classified box "L." c/o The Citizen. TFN

FOR SALE: Used Bedroom Suite, Vanity, Chest, Bed with springs and mattress, \$75. Call 842-2626, Boetsma Home Furnishings. 8009

CUSTOM REMODELING AND BUILDING—Quality workmanship—prompt service—reasonable rates! Your satisfaction guaranteed! References available. Free estimates. Call Kowanna 653-2214. TFN8010

EARN UP TO \$100 WEEKLY addressing and stuffing envelopes at home, spare-time. For information send 25c and stamped, self-addressed envelope to: D & M Advertising Associates P.O. Box 4347-B, Colorado Springs, Colorado 80930. 8010

DAIRY AUCTION
 Sat., March 9 - 2:00 p.m.
 N. Ind. Ave., Auburn, Ind.
 33 Hol. Cows and Heifers
 Hay-Straw-Silage
 Milking Equipment
 KRUSE AUCTION CO
 Auburn Ph. 219-925-4004

TRAIN TO BE A SEMI DRIVER
 Transport Careers offers individualized instruction, veterans benefits, financing for non-veterans, job placement service. Call or write: Transport Careers 5320 Industrial Road, Fort Wayne, Ind. 219-483-0509. OT

ELKHART COUNTY HAMPSHIRE
 Swine Breeders Sale: Friday night, March 8, 7:30 p.m. Fairgrounds, Goshen, Indiana 30 boars, 70 open girls. OT

USE ROSE
Dry Clean Carpet and use instantly
 Please phone for information
Boetsma Home Furnishings, Inc.
 Culver 842-2626

LAND WANTED: Three to five acres in Marshall County. Phone 842-3278 or 772-3803. 8010p

TOPPING, Trimming, Removal. A. S. TREE SERVICE 804 South Main Street, Culver, Indiana 46511 Call 842-2778. 4x8012

IF YOU HAVE any old fountain pens, (the ones that use liquid ink), we need them for our collection! If you have something that you think might be interesting, please call us, even if the pens are broken or parts are missing. The Culver Citizen, Tom and Bernadette Zoss, 842-2297. Thank you!

RENT

SEVEN ROOM FARM HOUSE for rent. Newly remodeled, 4 1/2 mile west of Letters Ford on 400 North. No house pets. Call 289-3549 in South Bend. 8011p

FOR RENT Clean, nicely furnished three room apartments. Also sleeping rooms. Phone 842-3442. TFN

FOR SALE - Just about anything you like right here in the CITIZEN classifieds!

HELP WANTED

HELP NEEDED FOR SPRING CLEANING - if you are available for work for a few days, weekdays or weekends, in the immediate future, call 842-2598 TFN

PROFESSIONAL DIRECTORY

PODIATRIST

Dr. David H. Olson
 Culver Clinic
 820 Academy Road
 Wednesday Hours By Appointment
 Telephone 842-3351

CLINICS
CULVER CLINIC
 820 Academy Road
 Phone 842-3351

G. W. Stevenson, D.O.
 General Family Practice
 Office Hours By Appointment
 Phone 842-3351

OPTOMETRIST

Dr. F. L. Babcock

Office Hours by Appointment
 Tuesday, Thursday, Friday, 9 to 5
 Wednesday and Saturday 9 to 12
 Closed Monday
 Phone 842-3372

DENTIST

Thomas M. Pugh, R.P.H., D.D.S.
 Office Hours by Appointment
 1001 Lake Shore Drive
 Phone 842-3465

PHYSICIAN

LAKE SHORE CLINIC
 921 Lake Shore Drive
 Phone 842-3327

Michael F. Deery, M.D.

PHYSICIAN

General Medicine and Obstetrics
 Office Hours by Appointment
M. GEORGE ROSERO M.D.
 17 East Main Street, Kewanee
 Office Hours by Appointment
 Phone: Office 653-2383
 If no answer phone 653-2565

Our Library

News About Books

NEW BOOKS AT THE LIBRARY

A book of interest to all ages is **AIRPLANES**, from the dawn of flight to the present day, by Enzo Angelucci. The colored illustrations and designs are by Marco Roto.
HOW TO BE YOUR BEST FRIEND, a conversation with two psychoanalysts, was written by Mildren Newman and Bernard Berkowitz, Agatha Christie's latest novel, **POSTERN OF FATE**, will also interest many.
 Betty Crocker's **LOW-CALORIE COOKBOOK** is especially for teenagers, and **PARTIES FOR CHILDREN** also by Betty Crocker, will be welcomed by mothers of tots planning for birthdays.
 With quilts the latest craze, a beautiful book by Beth Gutcheon, **THE PERFECT PATCHWORK PRIMER**, those interested in needlework will want to spend their "hobby hour" studying the many illustrations by Barbara Stockwell and Jeffrey Gutcheon.
 The ever popular Phyllis Whitney has done it again with **THE TURQUOISE MASK**, as has Helen

MacInnes in **THE SNARE OF THE HUNTER**, both new novels recently added to the shelves.

CRAFTS FOR FUN AND PROFIT, by Eleanor Van Zandt, describes 18 different exciting crafts to do in your home and the book includes easy step-by-step instructions in full color.

BLOOD PRESSURE CLINIC THIS AFTERNOON

The local chapter of Tri-Kappa will sponsor its monthly Blood Pressure Clinic at the Culver Public Library today, March 7th, from 1:00 p.m. to 4:00 p.m. The service is offered at the library the first Thursday of each month, and all citizens are urged to take advantage of this important service.

FREEZONE IS FOR CORNS THAT HURT.

Why fool around with painful corns, when Freezone can help you remove them. Try it. You'll see. In just days, the corn will be gone - the hurt will be gone. Painlessly. No dangerous cutting. No ugly pads or plasters. Drop on Freezone - take off corns.



Agonizing Pain From Ingrown Toenail? Get Outgro For Fast Relief

Outgro gives you fast temporary relief from ingrown toenail pain. Outgro toughens irritated skin, eases inflammation, reduces swelling without affecting the shape, growth, or position of the nail. Stop ingrown nail pain fast with Outgro.



When it comes to money, I want the advice of a man who knows agriculture in this area. So I go to the PCA.

PCA / the go ahead people



talk to
CARROLL L. THOMPSON
 your local PCA man

440 East Jefferson Street
 Plymouth, Indiana 46563



CCHS Loses At Knox



SECTIONAL WOES—The Culver Cavaliers dropped their Friday night match against North Judson by a score of 73-43, after downing LaCrosse on Wednesday night by a score of 70-51.

This picture shows the problem faced by the smaller and lighter

Cavaliers, who played a clean and fast game, despite the spread in the final score.

The battle of the boards was lost to North Judson's taller five, who will travel to the South Bend Regional this weekend.

CITIZEN photo

CULVER ACADEMIES' ALUMNI WILL DISCUSS CAREERS

Forty alumni will return to the campus of Culver Military Academies and the Culver Academy for Girls to participate in a "Careers, Jobs and Interests" program Friday evening and Saturday morning, March 8th and 9th.

Sponsored by Culver's alumni association, the four-session program will include recognition of Amos G. Carter, Jr., Culver's Man of the Year for 1973 and a Fort Worth, Texas, publisher, broadcasting executive and civic leader. Carter will lead sessions on the mass media as molders of public opinion.

Illustrating their far-flung careers, the alumni have titled some of their presentations "Chasing the Bull and the Bear," "Doin' the Dozens While Rakin' Your Blowout," "Hard-Hat Businesswoman," and "Shrinking Heads and Expanding Minds." The program will include a clinical psychologist, a movie critic, an Olympic kayaker, a rancher, corporation presidents, educators, bankers, attorneys, stock brokers, politicians, franchise holders and a special agent.

First Application Relieves Itchy Skin Rash

Also Helps Promote Healing

Medicated Zemo quickly relieves itching, irritated skin. Then Zemo helps nature heal and clear red, scaly skin rashes externally caused. For fast relief, get Zemo Ointment or Liquid.

New Employee

KELDENICH NAMED TO BANK STAFF

Fred E. Adams, executive vice president, The State Exchange Bank, has announced the appointment of Jack Keldenich to the bank staff. Mr. Keldenich has been named assistant vice president.

Mr. Keldenich comes to The State Exchange Bank from Valparaiso. For the past seven years he has been a staff associate of Indiana Information Controls, Inc.

As customer services and sales representative for the Indiana Controls Center, he has served more than forty banking firms and many industries in the tri-state area. Earlier he served as director of marketing and customer services and as supervisor of processing operations.

A native of Hammond, Mr. Keldenich is a graduate of Howe Military School. Following graduation from Howe, he attended the Illinois Institute of Technology and Long Island University.

Continuing special training has included studies at the Automation Institute and Honeywell Information Sciences School, both in Chicago; Purdue University, North Central Extension Center; U.S.A.F. Data Processing Courses; and company sponsored courses in sales, marketing and management.

A U.S. Air Force veteran, Mr. Keldenich served three years at an Air Force Base in New York, and one year in Vietnam. Mr. and Mrs. Keldenich recently moved from Valparaiso to Culver where they



JACK KELDENICH

reside at 503 South Main Street. Mrs. Keldenich, the former Carol Jean Carl of Crown Point, a member of the staff of McGill Corporation. Valparaiso, for more than six years, has been transferred to the McGill offices at Culver.

EL DORADO
Theatre
CULVER

FRI-SAT-SUN
March 8-9-10

"THE EMIGRANTS"

"One of the year's 10 best"
Judith Crist, ABC T.V.

"One of the great movies about this country"
Rex Reed
Rated P.G. 7:15-9:50

Science Fair

REGIONAL SCIENCE FAIR TO BE HELD AT BETHEL COLLEGE

Students from grades four to twelve are gearing up for the annual Northern Indiana Regional Science and Engineering Fair to be held this spring at Bethel College.

Dr. Kenneth L. Esau, fair director, said that the intermediate level exhibits will be shown in Bethel's Goodman Auditorium on April 18th, while junior and senior levels will be on display April 20th.

Intermediate students are those in the fourth, fifth and sixth grades, while the junior level is grades seven and eight.

To be eligible, students must be enrolled in a public, private or parochial school in Elkhart, Fulton, Koscusko, Marshall, Miami, Huntington, St. Joseph or Wabash Counties.

Dr. Esau emphasized that although local science fairs in individual schools may be utilized as a screening device for entrants into the regional fair, this is not necessary. Students may enter the regional fair directly, after recommendation by a competent local school instructor.

Deadline for submitting entry blanks to the Fair Director is April 10th, according to Dr. Esau.

All students taking part in the regional fair will receive a certificate of merit, and first, second or third place ribbons will also be awarded to qualified entries.

A total of eleven categories in each of the three levels is available for selection by the entrants in the fair. The divisions are botany, chemistry, earth and space sciences, ecology and conservation, mathematics and computers, medicine and health, microbiology,

physics, social sciences and behavior and zoology.

The top awards at the senior level will be two all-expense paid trips, and the right to enter the International Science and Engineering Fair at Notre Dame University, South Bend. There will be numerous special awards at each of the levels.

Entry blanks for the fair will be available by request from Dr. Esau at Bethel after March 15th.

Honored At I.U.

CULVER STUDENTS HONORED AT I.U. FOUNDERS DAY

Three Culver students are among the Indiana University students at Bloomington who will be honored for scholastic excellence April 17th at the University's traditional Founder's Day program on the Bloomington campus.

The newly announced undergraduate honor students are those who made the Dean's List the first semester of this school year. To make the Dean's List, students must earn a 3.5 grade average or better in a minimum of 12 hours (3.3 average for freshmen). An all-A average is 4.0.

Also to be honored at the program will be those students, announced last summer, who made the Dean's List the second semester of the 1972-73 school year.

Families of the honor students will be invited to the Bloomington campus for the program.

First semester 1973-74 honor students from Culver are Daniel Chase, 30 South Shore Drive, Pamela J. Couch, 171 Academy Road, and Catherine E. Mitzell, Faculty Road.

SMALL CAR?

Nobody can match our selection... 24 choices in all!

NOW IN STOCK FOR IMMEDIATE DELIVERY! FORD MUSTANG II

—the luxurious economy car. The right car, at the right time. And when you take a close look at this car's luxury, comfort and elegance, you'll know why it's been named Motor Trend Magazine's "Car of the Year."



Here at Small Car Headquarters, you'll find three different sizes, three totally different concepts in small car driving. A total of 24 choices. All of them right for the times... one of them right for you!



See your Ford Dealer at Small Car Headquarters

VAN HORN Ford-Mercury

415 Lake Shore Drive

Culver