

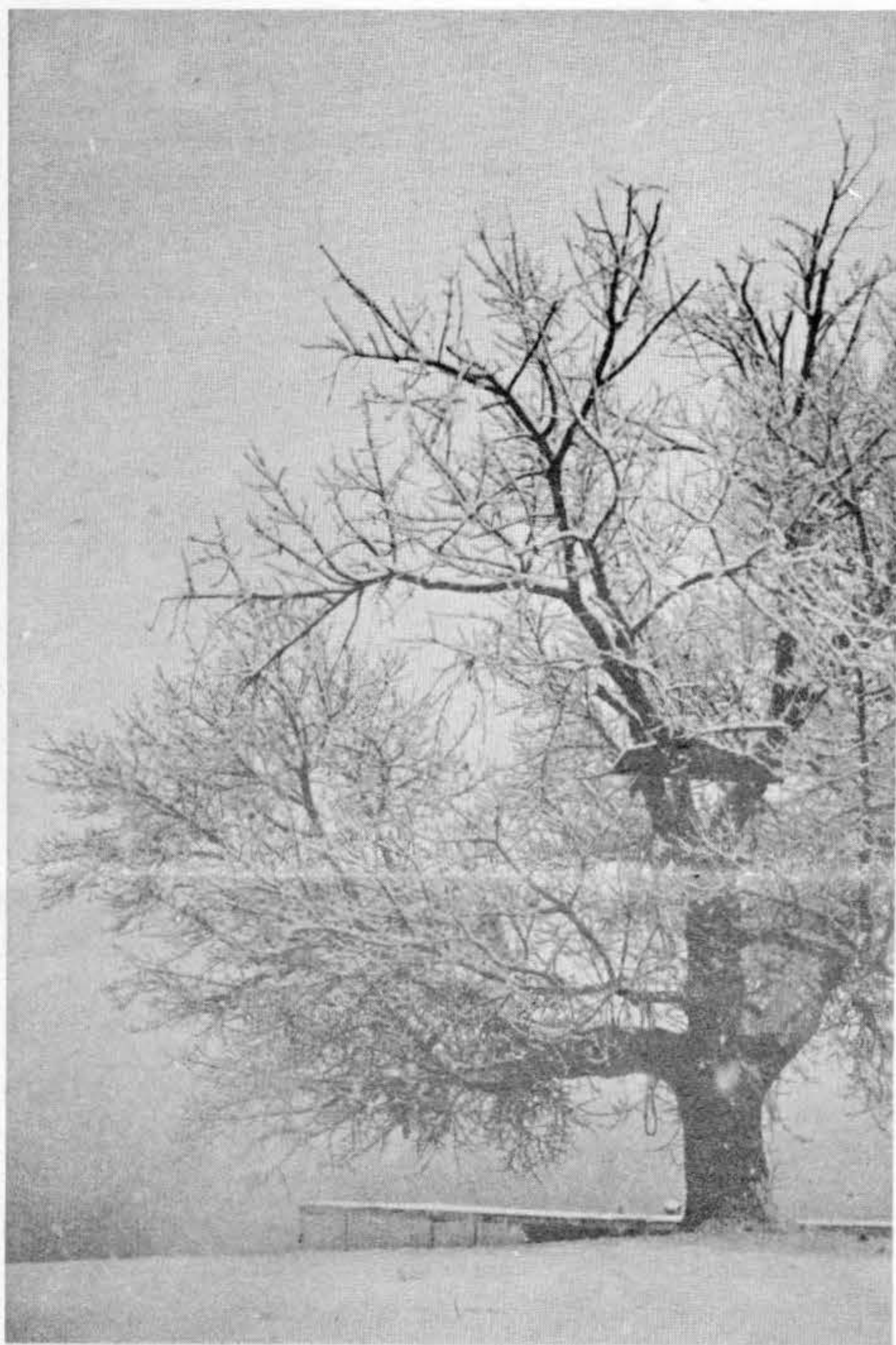
THE CULVER CITIZEN

ON LAKE MAXINKUCKEE ★ INDIANA'S MOST BEAUTIFUL LAKE

VOLUME 80, NUMBER 46

FIFTEEN CENTS PER COPY

NOVEMBER 20, 1974



OLD MAN WINTER'S opening snowstorm week, evidenced by this stately lakeshore tree painted a pretty picture around Culver last shaded with velvety fluffy snow.

Promotional tour heads South

Col. Ben A. Barone, Culver Academies' superintendent, embarked on a week-long admissions and development tour of the South Sunday.

Barone, accompanied by his wife, the director of development, director of admissions, public relations personnel, an alumni affairs representative and a Board of Trustees member, planned to visit five cities in the South and to meet with local alumni and parents associated with the Culver Clubs in the area.

Stops are scheduled in Memphis, Shreveport, New Orleans, Atlanta and Nashville.

According to Barone, the purpose of the promotional tour is

to match the enrollment to the facilities available at the Academies. At present, there are facilities for 850 students. Barone plans to increase enrollment from 600 boarding students to 700 in 12 months; and to 800 by the Bicentennial. To accomplish this, an additional 27 students must be enrolled monthly for the next 10 months.

Further tours are schedule in the following months: in December the entourage will visit the Western states, January is reserved for Texas, February will include a trip to Florida and the tour will be in the Eastern portion of the US in March.

Barone plans to visit each of the 65 Culver Clubs throughout the US.

Reward fund set up for Nellie Mikesell

Donations totalling \$2040.00, with more coming in is the status of the Nellie Mikesell Reward Fund recently set up at the Leiter's Ford State Bank.

According to Bank President Ed Stanley, most of the pledges and donations have been received from northern Fulton County, southern Marshall County and the Logansport area.

Contributions are still being accepted at the bank, the sum of which will be reward to the person releasing pertinent information leading to the arrest of Mrs. Mikesell's murderer.

Stanley told the CITIZEN all donations will be returned if they are not used as reward bounty.

Currently State Police, Sgts. Bob Burns and Don Smith are investigating the case, and will report up-to-date information and evidence to the Fulton County Grand Jury Nov. 26. The hearing will be conducted at the Courthouse in Rochester.

Culver marshall involved in fatal crash

Richard Woodward, Culver town marshall, was injured and Florence A. Eckstein, 60, R.R.1, Hamlet, was killed in a two-car accident on US 30 near the Indiana 39 intersection at 8 a.m. Monday.

According to Trooper Deutcher, of the Chesterton State Police Post, Eckstein pulled out of the Melco Truck Stop, located east of 39 on US 30, and pulled into the path of the Culver vehicle. The Eckstein car was struck broadside by the police car driven by Woodward. Deutcher stated that visibility was reduced to 100-150 feet due to extreme fog.

Eckstein was pronounced dead at the scene of the accident. Cause of death was a broken neck. Woodward suffered lacerations of the mouth and was treated and released from Parkview Hospital, Plymouth. He was reportedly on route to a Gary police laboratory when the accident occurred.

Census Bureau canvasses locally

Did you vote Nov. 5? Were you registered but did not vote?

The Bureau of the Census will ask these and other questions about voting activity in the 1974 election of persons 18 and older in a sample of households in this area this week.

Forrest P. Cawley Jr., director of the Bureau's Regional Office in Chicago, stressed that no questions will be asked about party affiliation or for whom a person voted. The survey will provide a profile of the typical American voter and non-voter: age, sex, residence, education, labor force status and family income.

In a similar survey following the 1972 presidential election, about 63 per cent of the civilian population of voting age, excluding persons residing in institu-

tions, were reported as having voted. This compares with voting turnouts reported in previous Bureau surveys of 68 per cent in 1968 and 69 per cent in 1964.

Voting questions are in addition to the usual ones asked in the monthly survey on employment and unemployment conducted nationwide by the Bureau for the US Department of Labor.

Results of this monthly survey provide a continuing measure of the economic health of the country. The September survey showed that both employment and unemployment continued to rise. Total employment rose by 350,000 from August to September, while the nation's unemployment rate rose to 5.8 per cent compared with 5.4 per cent in August.

Information supplied by individuals participating in the survey is confidential and results are used only to compile statistical totals.

Census Bureau interviewers visiting households in the area are Mrs. K. O'Guinn and Mrs. Amber Hyska.

THANKSGIVING PROGRAM

An evening of religious and inspirational music, especially for Thanksgiving, will be presented Wednesday, Nov. 27, during the Culver Community High School's Thanksgiving Program.

The program will take place in the school auditorium at 2 p.m. The public is invited and there is no admission charge.

SUBSCRIPTION ORDER

We're Growing.

Name _____

Address _____

City _____

Zip _____

One Year \$5.00

Two Years \$8.50

ADD FIFTY CENTS FOR SUBSCRIPTIONS OUTSIDE INDIANA

SEND TO: The Culver CITIZEN, Post Office Box 90, Culver, Indiana 46511
Please allow three weeks for entry of new subscription

THE CULVER CITIZEN

Established July 13, 1894

Published Every Wednesday Except For The Week Of July Fourth And The Week Of December Twenty-Fifth By The Culver Citizen Corporation, Post Office Box 90, Culver, Indiana 46511. All Hours Telephone (219) 842-2297

Peg Graham, editor Bob Nicolson, managing editor
Second Class Postage Paid At Culver, Indiana 46511

SUBSCRIPTION RATES
One Year \$5.00
Fifty Cents Additional For Subscriptions Outside Indiana

Member, Hoosier State Press Association National Newspaper Association
Culver Area Chamber of Commerce

Editorial

November's first weekend was just like old times. Indiana's traffic fatalities again made it into double figures with 12 dead.

Before the 55-mph speed limit, Indiana regularly registered five to eight traffic deaths a day, and 12 to 18 on weekends.

Fatalities dropped dramatically after the 55-mph limit went into effect and people began observing it. Three to five deaths became average on weekends, and some days the Associated Press reported no fatalities at all. Most often, the fatal crashes which did occur involved young drivers in one-car mishaps.

However, during last summer all drivers seemed to wonder about the 55-mph limit's real necessity. As gasoline became more plentiful, speed quickened--and fatalities rose.

November's first weekend was typical--one fatal motorcycle crash, one elderly pedestrian killed, two two-car crashes and a farm tractor hit by a train.

The toll pushed 1974's total past 1,000--but it's still almost 400 under 1973.

The 55-mph limit still is law and as winter approaches we hope all motorists will observe it faithfully. It'll save lives as well as gasoline and money.

OBITUARY

MRS. DOLYN H. WALKER

Funeral services for Mrs. Dolyn H. Walker, 79, 886 West Shore Drive, were Friday, Nov. 15, at the Bonine Funeral Home. Rev. Earl W. Sharp officiated the services.

Burial was at the Culver Masonic Cemetery.

Walker, wife of the late Ivan M. Walker, died at the Miller Merry Manor, Plymouth, after an extended illness. She was a long-time resident of Culver and was a member of the Wesley United Methodist Church, Wide Awake Sunday School Class, W.A. Fleet American Legion Auxillary and was past president of WSCS at the church.

Survivors include: one son, Thomas K. Walker, of Culver; one sister, Mrs. Charles Gray, Franklin, Ohio; one grandson and six great grandchildren.

A MISTAKE IS SOMETHING THAT CAN BE CORRECTED

And trusting God to show how the wrong can be put right is a well-tried way to go about it.

Broadcast this week over many stations including:

WSBT 960 kc
9:15 AM Sunday

the TRUTH
that HEALS

A Christian Science Radio series

POLICY REGARDING LETTERS TO THE EDITOR

All letters submitted for publication must bear the name and address of the writer, and authorship will be verified before publication.

The CITIZEN will, however, honor requests to withhold the name of the author.

Address letters to the Editor to:

Editor
THE CULVER CITIZEN
Post Office Box 90
Culver, Indiana 46511

TOMORROW

Tomorrow is an
Unpromised land,
Today is the day
We must take our stand.

Roth Cline

Church Directory

CULVER COMMUNITY SCHOOL LUNCH

MONDAY, NOV. 25--Tuna Casserole, Spinach with Vinegar, Finger Foods, Fruit Cocktail Dessert, Bread and Butter, Milk.

WEDNESDAY, NOV. 27--Hot Dog on Bun, Spaghetti and Tomato Sauce, Cheese Wedge, Fruit Dessert, Relishes, Milk.

TUESDAY, NOV. 26--"Thanksgiving Day Dinner:" Roast Turkey, Mashed Potatoes with Gravy, Buttered Green Vegetable, Cranberry Sauce, Brownie, Bread and Butter, Milk.

THURSDAY, NOV. 28--No School.

FRIDAY, NOV. 29--No School.

CULVER BIBLE CHURCH

Rev. Edward Clark, Pastor.
Sunday School 9:30 a.m., Morning Worship 10:45 a.m., Young People's Service 6:15 p.m., Evening Worship 7:00 p.m., Wednesday Night Prayer Meeting and Bible Study 7:30 p.m., Thursday Night Home Bible Study 7:30 p.m.

UNION CHURCH OF THE BRETHREN

At the corner of State Road 17 and 10B Road. Bert Cramer, Superintendent. Shared Pastorale: Bruce Weaver, Wesley Brubaker, Larry Banks.
Sunday Church School 9:30 a.m., Worship 10:30 a.m.

BURR OAK CHURCH OF GOD

Darrell G. Maddock, Pastor, Mrs. John Drang, Sunday School Superintendent.
Sunday School 9:30 a.m., Morning Worship 10:30 a.m., Senior Youth Fellowship 6:30 p.m., Junior Youth Fellowship 6:30 p.m., Evening Worship 7:30 p.m., Wednesday "Hour of Power" Service 7:30 p.m.

ZION GOSPEL CHAPEL

Steven Bradley, Pastor, Marion Kline, Sunday School Superintendent, William Sheridan, Assistant Superintendent.
Sunday School 9:30 a.m., Morning Worship 10:45 a.m., Evening Service 7:30 p.m., Mid-Week Service on Thursday at 7:30 p.m.

CULVER MILITARY ACADEMY MEMORIAL CHAPEL

Worship Service 11:00 a.m., Visitors are always welcome.

GRACE UNITED CHURCH OF CHRIST

Rev. John Krueger, Pastor.
Church School Classes 9:15 a.m., Worship Service 10:30 a.m.

EMMANUEL UNITED METHODIST CHURCH

Rev. Maurice Kessler, Pastor.
Worship Service 9:30 a.m., Church School 10:35 a.m. Wednesday: Mid-week Service 7:00 p.m., Choir Rehearsal 8:00 p.m.

WESLEY UNITED METHODIST

On the corner of School and Lewis Streets. Rev. Earl W. Sharp, Minister, Mrs. Ted Strang, Director of Christian Education.
Church School 9:30 a.m., Worship Service 10:40 a.m.

SAINT MARY'S OF THE LAKE CATHOLIC CHURCH

"The Church With The Gold Crosses"
Rev. Joseph A. Lenk, Pastor.
Saturday Mass 5:30 p.m., Sunday Mass 11:00 a.m., Religious Instruction for Young Adults 9:30 to 10:30 a.m. Sunday, Confessions before Mass.

TRINITY LUTHERAN CHURCH

Located at 330 Academy Road, Culver. Rev. Roger L. Sommer, Pastor.
Sunday Worship 9:00 a.m., Sunday School and Bible Class 10:15 a.m., Women's Guild on First Mondays 8:00 p.m. and Alternate Thursdays 7:30 p.m.

GILEAD UNITED METHODIST

Alva C. Ward, Pastor, Cecil Chartars, Superintendent of Studies. Sunday school every Sunday at 10:00 a.m. Worship every first and third Sundays at 11:00 a.m.

LEITERS FORD METHODIST

Leon Welling, Sunday School Superintendent.
Church School 10:00 a.m., Worship Service 11:00 a.m., M.Y.F. on Second and Fourth Sundays.

LEITERS FORD CIRCUIT

Rev. Phillip Lutz, Pastor

MONTEREY METHODIST

Worship Service 9:10 a.m., Church School 10:15 a.m.

MOUNT HOPE UNITED METHODIST

Alva C. Ward, Pastor, Eldon Davis, Superintendent of Studies. Sunday school every Sunday morning at 10:00 a.m. Worship on the second and fourth Sundays at 11:00 a.m.

SANTA ANNA UNITED METHODIST CHURCH

Rev. Roscoe Pheneger, Pastor, Phillip Peer, Superintendent.
Church School 10:00 a.m., Worship Service 11:00 a.m. every First and Third Sunday.

POPLAR GROVE UNITED METHODIST

Rev. Roscoe Pheneger, Pastor, Ellis Clifton, Superintendent. Worship Service 9:30 a.m., Church School 10:30 a.m.

MONTEREY SAINT ANN'S CATHOLIC CHURCH

Sunday Masses 7:30 and 9:30 a.m., Weekday Masses 8:00 a.m. Monday, Tuesday and Thursday, 7:30 p.m. on Wednesday and Friday. Saturday Masses 8:00 a.m. and 7:30 p.m. Holy Days of Obligation 7:30 a.m. and 7:30 p.m. Confessions after Wednesday and Friday evening Mass, and Saturday from 4:00 to 5:00 p.m.

FIRST CHURCH OF CHRIST, SCIENTIST

Located at 428 South Michigan Street, Plymouth.
Worship Service 10:30 a.m., Wednesday Evening Service 7:45 p.m.

ST. THOMAS EPISCOPAL CHURCH

Located at the corner of Center and Adams Streets, Plymouth. Rev. James G. Greer, Pastor.
Sunday Services, Holy Communion 7:30 a.m., Family Eucharist 9:30 a.m., Parish Nursery 9:30 a.m.

PRETTY LAKE TRINITY UNITED METHODIST

Rev. Richard Lewke, Pastor.
Morning Worship 9:30 a.m., Sunday School 10:20 a.m.

RICHLAND CENTER UNITED METHODIST CHURCH

Rev. Terry Shumaker, Pastor, Robert J. Neillans, Lay Leader, Howard Conrad, Superintendent. Telephone Rochester 223-3751.

Worship Service 9:30 a.m. on Second and Fourth Sundays, 10:30 a.m. on First and Third Sundays, Church School at alternating times.

BURTON UNITED METHODIST CHURCH

Rev. Terry Shumaker, Pastor, John Cessna, Lay Leader, Margaret Belcher, Superintendent. Telephone Rochester 223-3751.

Worship Service 9:30 a.m. on First and Third Sundays, 10:30 a.m. on Second and Fourth Sundays, Church School at alternating times. Methodist Youth Fellowship 5:30 p.m. Sunday.

For corrections or additions, please contact:

The Culver CITIZEN
Post Office Box 90
Culver, Indiana 46511



Let us help you get to know your new community as quickly as possible. Our hostess will call on you and present you with gifts, greetings and useful information.

Welcome Wagon
INTERNATIONAL, INC.

Call Charlene Strang

Telephone 842-2986



Cavaliers slide past Argos 59-55 in season opener

Matt Marshall attempts to break a fourth quarter tie during Culver Community High School's basketball opener against Argos Saturday night. CCHS was victorious over their number one rival 59-55. Tim Crowel, a 5'11" senior, was high point man for the Cavaliers with 18 followed by Don Zehner with 16 and Bob Thomas with 15. CCHS has a double slate this weekend facing Bremen away on Friday and LaVille Saturday on their home court. Games start at 8 p.m.

Valparaiso U. vespers present Bach cantata

Bach's "Cantata 80" will be featured at a Cantata Vespers in Valparaiso University's Chapel of the Resurrection Thursday, Nov. 21, at 8 p.m.

Directed by Frederick Telschow, the 65-voice Schola Cantorum will sing the cantata, with John Sumrall directing the Civic Orchestra.

This cantata by Bach, has as its heart "A Mighty Fortress is our God," one of the most widely sung hymns of Christendom.

The opening chorus is said to be one of Bach's greatest, with jubilant trumpets and festive orchestration of tympani, oboes and strings.

The public is invited to the Cantata Vespers, at which Dr. Walter Keller, chairman of VU's Department of Theology, will chant the liturgy.



CALORIE COUNTDOWN

BY SUSAN DUFF MASTRO

THANKSGIVING DIETING

Stuffing yourself come Thanksgiving Day won't add to your festive mood. Actually, when you think about it and possibly remember last year, all that overeating just makes you feel uncomfortably sluggish and it definitely wreaks havoc with a dieter's morale. You don't have to make a glutton of yourself just because it's a holiday - so don't use that as an excuse.

Let's start with the big bird: Turkey meat is not terribly fattening if you give up the skin. Four ounces of the light meat (that's two healthy slabs) amounts to 200 calories. The same amount of dark meat has 230 calories. If you just can't resist that crackly skin add about 125 calories to each slice you eat. Half a cup of turkey giblet gravy has 80 calories. If you must have it, don't have more than a quarter cup. Regular bread stuffing or dressing straight from the turkey has 180 calories per cup; corn bread or chestnut stuffing has less, 175 per cup. Better limit your quantity of this, too.

Everyone seems to have his own Thanksgiving favorite vegetables, but one favored by many is candied yams. They run high, 295 calories each. If you bake those sweet potatoes (the smaller ones) instead of candying them, they'll have only 155 calories each. Boiled, they're higher, 170 each.

Squash is another favorite. Mashed and baked, winter squash has 65 calories per half cup and that's something you can fill up on without filling out too much. Summer squash has even less - just 17 calories per half cup. Creamed onions are another seasonal choice and they're not bad at about 80 calories per half cup.

Salad is another good way to fill up. A whole cup of fresh raw vegetables won't amount to more than 25 or 30 calories. I know it's a drag to make yours separately and use diet dressing, but it's worth the trouble. Just one tablespoon of oil has 100 calories and most dressings are based on oil. Commercially bottled diet dressings have as little as 10 calories per tablespoon, and I've found that they're really quite tasty.

Cranberry sauce is a lot more fattening than some think: 405 calories per cup from the can, and only slightly less if you make your own from whole cranberries. If you love cranberries, better to have a glass of the juice rather than a mass of the sauce. Four ounces of cranberry juice has only about 83 calories. And, perhaps you'll want a little white wine with your special turkey dinner. You needn't abstain, but do limit yourself to one four-ounce glass which will add 95 to 100 calories depending on type - the dryer the better, by the way.

Traditional Thanksgiving desserts can run high - pumpkin pie has 150 to 160 calories per one-eighth of pie slice and mincemeat pie has 200 to 215 calories per slice, depending on the recipe. If it's pie or die, have just a half of a normal slice.

((c) 1974, McNaught Syndicate, Inc.)

GIRL SCOUTS

Girl Scout Troop 1053 has started a new year. Leaders are Pat Butler and Evelyn Lawson.

There are four patrols: private eyes, love bugs, busy bees and banana splits. Each patrol is responsible for either refreshments, clean-up, songs and games or the flag ceremony.

A total of 24 girls in fourth, fifth and sixth grades participate at the Grace United Church Tuesdays from 3:15-5 p.m. Last week Ray Boutillier demonstrated knots.

Get Action...



GO CLASSIFIED



Hundreds of Checks Were Received

In Early November
By 1974 Christmas
Club Savers Of The
State Exchange Bank,
Culver, Plymouth, Argos,
And The Farmers State
Bank, LaPaz

DID YOU RECEIVE ONE? Chances are you did.....

IF NOT, YOU CAN NEXT YEAR----
Here's how. Just visit any one of the conveniently located offices of The State Exchange Bank or the Farmers State Bank and ask to open your 1975 CHRISTMAS CLUB account. We pay INTEREST on Christmas Club Savings. You'll like our 50 week, 1975 Christmas Club Savings..... and with interest, too!

Just Save • Weekly [For 50 Weeks]	And You Receive [Plus Interest]
\$.25	\$12.50
.50	25.00
1.00	50.00
2.00	100.00
3.00	150.00
5.00	250.00
10.00	500.00
20.00	1,000.00

THE STATE EXCHANGE BANK

ONE MANAGEMENT

CULVER

PLYMOUTH

ARGOS



"The Bank That GOOD WILL Built"

FARMERS STATE BANK

LAPAZ

The **CULVER** Inn

Overlooking Beautiful Lake Maxinkuckee
Culver Military Academy - 842-3331

The Culver Inn wishes you a Happy Thanksgiving and would like to invite you to join us in the Dining Room, overlooking beautiful Lake Maxinkuckee, for our traditional Turkey Dinner. We will be open from 12:00 to 4:00 P.M. November 28th and shall look forward to serving you. No reservation necessary. Children under ten years old may eat at half price and children under two years old at no cost.

Meals will be served from our regular menu plus

ROAST YOUNG VERMONT TURKEY	\$4.50
BAKED VIRGINIA HAM WITH GLAZED PINEAPPLE	\$4.50
ROAST PRIME RIB OF BEEF AU JUS	\$6.80

GUITARIST AT ANCILLA

"El Rubio," Kent Newman, a flamenco guitarist, will entertain area residents with fiery flamenco music and dancing at the Ancilla College auditorium Sunday, Nov. 24, from 2-3:30 p.m.

Newman and his group "Los Hijos de Dorados" (children of a legendary gypsy king) have received rave reviews during their US concert tour, playing principally at colleges and universities.

A native of Greencastle, Newman received his formal education at Purdue University, then worked as an engineer in Los Angeles. His love for flamenco music took him to a gypsy camp outside Los Angeles where he learned his art. He also studied with Mario Escudero, Mariano Cordoba and Enrique de Lusriaga.

Before forming his own troupe consisting of guitarist, dancer and percussionist, Newman was a member of an instrumental and dance group named Los Alegres in California.

Admission is \$1. Tickets may be purchased at the door.



Our Library

News About Books

THREE AGAINST THE WILDERNESS, by Eric Collier is the amazing true story of a modern pioneer family and the miracle they wrought in the barren northern wilderness.

Warm memories of growing up in a small town in the 1930's is told by John Craig in **HOW FAR BACK CAN YOU GET**.

Ruth Lana, a travel consultant to 600,000, shows you how to put together the trip that suits you best and how to make the travel industry work for you in **TRAVEL SENSE**.

Bernard Schwartz is the editor for American Heritage that has just published a most informative book, **THE LAW IN AMERICA**.

To read history that flows smoothly with a touch of humor, select a book from the Rivers of America series. The latest one published is **THE PASSAIC RIVER**, written by Norman F. Brydon.

Not a dictionary, but a complete guide to the tricks, strategies and trial-and-error systems used by experts for solving crossword and other puzzles is explained by Norman Hill in **HOW TO SOLVE CROSS-WORD PUZZLES**.

Jessie Bernard, in **THE FUTURE OF MOTHERHOOD**, interprets an ultra-provocative

forecast of the psychological, political, social and economic status of women in the next generation.

Nate Shaw at 85, a cotton farmer born in Alabama in 1885, the son of former slaves, pours out the truth of his life in the rural South through almost a century in the extraordinary autobiography in **ALL GOD'S DANGERS**.

THE WORLD OF THE AMERICAN INDIAN is a beautiful new book published by the National Geographic Society. Profusely illustrated in color with numerous maps.

Here is a book directed to men. **TEACH YOUR WIFE HOW TO BE A WIDOW**, edited by Joseph Newman for US News and World Report. Most wives are unprepared to assume financial responsibility for their families, or even for themselves alone, in the event of the death of their husbands.

COMMUNITY CHURCHES

Culver Community Churches will join in a Community Thanksgiving Celebration Sunday, Nov. 24, at 7:30 p.m. at the Wesley United Methodist Church.

A community choir, under the direction of Clayton Moon, and community handbell ringers, directed by Lloyd Moseng, will highlight the service. Mrs. Clayton Moon is organist.

Each of the churches will contribute to the celebration with special music. An offering will be taken for CROP, the Community Hunger Appeal of Church World Service.

Participating churches are: Burr Oak Church of God, Emmanuel United Methodist Church, Grace United Church of Christ, Trinity Lutheran Church and Wesley United Methodist.

The public is invited to attend the Thanksgiving observance. A fellowship period will follow the service.

Tel-Med library answers health questions

Can medicines in the home poison your child? Is masturbation harmful? How can I reduce the risk of a heart attack?

Answers to these and many other health questions are provided as a free public service by the doctors of the Indiana State

Medical Association to Indiana residents through the Tel-Med system.

Tel-Med is a library of more than 200 tapes which can be listened to in the privacy of your home by dialing toll-free 1-800-382-5681.

All tapes were written by

doctors of the ISMA in a straightforward, easy to understand style. They run from three to five minutes in length and are delivered by professional speakers.

No names or questions are asked when a call is made. Give the operator the number of the tape and it will be played. To hear the tape repeated, hang up and call back.

The information obtained from the tapes can help recognize signs of disease and better equip persons to handle serious illness.

Tel-Med, which began as a pilot program in Indianapolis over a year ago, has been offered state wide since May. Since that time, the average daily calls have jumped from 444 to 794. For the statistical minded, that breaks down to 79 calls an hour or a little over one call each minute.

All this traffic is handled on 10 local and 10 state telephone lines from 10 a.m. to 8 p.m., Monday through Friday and from 10 a.m. to 6 p.m. Saturday.

Some of the areas covered are: children, birth control, drug abuse, heart, dental care, first aid, cancer, respiratory, skin disorders and 55 tapes logged under general.

Copies of the tape list may be obtained from your physician or by writing the Indiana State Medical Association, 3935 N. Meridian St., Indianapolis, 46208.

Methodist women elect officers

Pictures of nine European countries, along with music by 57 members of the Sounds of Hope Choir, were the highlights of the program when the United Methodist Women met Nov. 14 at Wesley Church.

Diane Thomas, a member of the church, told of her experiences as a member of the choir that spent a summer month abroad, furthering international understanding through music. The choir, directed by Varner Chance, consisted of youth from

Indiana, Michigan, Ohio and Florida.

Election of officers was conducted with the following elected for 1975: president, Mrs. Ray Houghton; vice president, Mrs. Bill Allen; secretary, Mrs. Robert Lindvall; treasurer, Mrs. Gerald Thomas; Christian global concerns, Mrs. Fred Lane; Christian personhood, Mrs. Leila Graber; supportive community, Mrs. Earl Graham; membership, Mrs. F.L. Babcock.

Also: nominating committee, Mrs. Gerald Thomas, Mrs. Richard Dehne, Mrs. Ronald Tusing and Mrs. Hampton Boswell; thrift shop, Mrs. Roth Cline; flowers, Mrs. Harry Speyer; publicity, Mrs. Robert Lindvall; representative to Culver community churches, Mrs. Wilber Taylor.

Officers Training Day will be Nov. 25 at Winamac for an afternoon session, or at Peru for an evening session.

DAUGHTERS OF RUTH

Seventeen members of the Daughters of Ruth, Culver Bible Church, met Monday, Nov. 11, at the home of President Mrs. Joe Boetsma Jr. with Mrs. Tony Follmer assisting.

New officers were elected including: Mrs. Robert Kirkland, president; Mrs. Al Jenkinson, vice president and Mrs. Walt Miller, secretary treasurer. Mrs. Edward Clark was appointed reporter and Mrs. Vernon Clem and Mrs. Al Jenkinson were appointed "Cheer Ladies." The group also packed boxes of canned foods for the Baptist Children's Home in Kouts.

CULVER BIBLE CHURCH

Sunday, Nov. 24, is another special day at Culver Bible Church. Services will begin with Sunday School at 9:30 a.m. with classes for the entire family. At 10:45 a.m. the church worship hour will begin with special singing followed by a chalk art drawing by Mark Weaver, a church member.

Wednesday, Nov. 27, will be a special Thanksgiving and Praise service at 7:30 p.m. The public is invited.

YOUTH GROUPS MEET

A hay ride was enjoyed by the Junior High United Methodist Youth Fellowship of Wesley Church Sunday, Nov. 10. The youth group, accompanied by Mr. and Mrs. Bill Snyder, Mrs. Ken Thomas and Mike Overmyer, then returned to the church for supper and games.

The Senior High group had a Pizza party Sunday evening as they met for the first meeting of the Fall season with their counselors Mr. and Mrs. Ken Turner. A hay ride was planned for last Sunday. Election of officers will be conducted soon.

**give him
the best seat
in the house....
LA-Z-BOY**




He'll love the comfort and ruggedness to La-Z-Boy Reclina-Rockers... and you'll love their handsome good looks and low price. Choose from a terrific selection of covers, including leather-like vinyls and crushed velvets. Over 40 to select from right now. And we'll even hold your selection until Christmas Eve.

now sale priced from 189.95



Boetsma
HOME FURNISHINGS, INC.
Culver, Indiana

we have a beautiful selection of Christmas gifts for the home



GRETTER'S

"ACROSS from THE BANK"

PHONE 842 2262

FOOD MART
Custom Kill QUALITY MEATS
106 N MAIN ST CULVER

SWIFT'S PREMIUM PROTEN	
CHUCK ROAST LB.	79c
SWIFT'S PREMIUM PROTEN	
RIB STEAK LB.	\$1.39
FRESH LEAN	
GROUND BEEF LB.	89c
SWIFTS' PREMIUM PROTEN	
CHUCK STEAKS LB.	95c
SWIFTS PREMIUM PROTEN	
T-BONE STEAKS LB	\$1.69
BORDENS	
HALF AND HALF PINT	39c
RICHELIEN Y.C.	
PEACHES 2 1/2 SIZE CAN	55c
U.S. NO. 1	
POTATOES 10 LBS.	89c
COOKING	
ONIONS 3 LB. BAG	39c
DONALD DUCK FROZEN	
ORANGE JUICE 3-6 oz. CANS	69c
DELMONTE	
PUMPKIN 2 1/2 SIZE CAN	39c



BARBARA OGDEN, assistant librarian, replaces books on new shelving units, installed last week at the Culver City Library. The new all-steel units supersede original shelves installed in 1915. Not only do the new

shelves increase space for the teenage fiction section of the library, they create better access to the first floor from the main floor. Purchase of the units was made possible through the library's "furniture fund."

Osborn Center dedication at CMA

Dedication of the Osborn Center and the dinner celebrating the 90th birthday of William O. Osborn are scheduled Saturday, Feb. 1, at Culver Academies.

Superintendent Ben A. Barone insists that honors to Osborn should be conducted where he has been a trustee for many years, an attorney and a life-long friend of Henry Culver, founder

of the internationally known secondary school.

Dedication of Osborn Center will be staged at the Center at noon with community participation. The program at the Academy will begin with a social hour from 5:30 - 6:30 p.m. at the Inn. Dinner will begin at 6:30 and will adjourn at 7:30 to Eppley Auditorium where the ceremony will be conducted, according to Mildred Kyle, president of Osborn Center, Inc.

Further announcements will be made concerning arrangement details as they develop.

KROFT IN TURKEY

The daughter of a Monterey couple has been assigned to Karamursel Common Defense Installation, Turkey, following her graduation from the communications systems operator course at Keesler AFB, Miss.

Airman First Class Glenda L. Kroft, daughter of Mr. and Mrs. Frank C. Kroft, received specialized training in the operation of electronics equipment used in monitoring USAF communications systems. She will serve with an Air Force support unit. Kroft graduated in 1973 from Winamac Community High School.

MADRIGAL DINNER

Tickets for this year's Madrigal Christmas Dinners at Saint Mary's College are now available.

The dinners, which will be presented Dec. 4, 5, 6 and 7 in Regina North Lounge, resemble an English yule feast typical of the Renaissance period.

Costumes, food and entertainment are all authentic recreations of the splendor of the Sixteenth Century.

Tickets are \$6.50 per person. Reservations may be made by calling 284-4176, 9 a.m. to 4 p.m. Monday through Friday.

CUB SCOUT UNIFORMS

Local Cub Scouts are in need of uniforms. Persons with uniforms or parts of a uniform are asked to bring them to Dr. Thomas Pugh's office, 1001 Lake Shore Dr.

SMITH IN OKINAWA

Marine Lance Corporal David E. Smith, son of Mrs. Sharon Hammon and whose wife Debra is the daughter of Mr. and Mrs. Oville Shidler, all of Culver, is participating in field exercises with the 1st Battalion, 4th Marine Regiment, 3d Marine Division, in the Northern Training Area on Okinawa.

He is receiving instruction in rough terrain crossing, small unit tactics, survival techniques and the use of ropes to descend towers, cliffs and helicopters.

A 1973 graduate of Culver Community High School, he joined the Marine Corps in June of 1973.



FELKE FLORIST

SINCE 1866
CORSAGES &
FUNERAL DESIGNS
OF ALL KINDS

WE ARE AS CLOSE AS YOUR TELEPHONE
CALL
Plymouth 936-3165
FREE DAILY DELIVERIES TO CULVER

PLYMOUTH
627 S. MICHIGAN

GOOD YEAR

TIRES! TIRES! NOW'S THE TIME TO BUY

2 FOR \$39

Size A78-13 tubeless blackwall plus \$1.78 per tire F.E.T., no trade needed.

SUBURBANITE POLYESTER

- Multi-angle cleats... for real grip-and-go traction
- Deep center, shoulder grooves built to bite deep
- Four bias plies of triple-tempered polyester cord
- Whitewalls slightly higher in most sizes

Blackwall Tubeless Size	Pair Price	Plus F.E.T. per tire no trade needed
6-00-12	2 for \$53	\$1.52
5-20-13	2 for \$48	\$1.40
A78-13	2 for \$39	\$1.78
C78-13	2 for \$54	\$1.99
5-60-14	2 for \$49	\$1.65
B78-14	2 for \$51	\$1.97
C78-14	2 for \$54	\$2.07
D78-14	2 for \$59	\$2.15
E78-14	2 for \$61	\$2.24
F78-14	2 for \$64	\$2.41
G78-14	2 for \$67	\$2.55
H78-14	2 for \$72	\$2.77
5-60-15	2 for \$50	\$1.78
6-00-15L	2 for \$57	\$1.84
C78-15	2 for \$57	\$2.02
F78-15	2 for \$60	\$2.42
G78-15	2 for \$69	\$2.63
H78-15	2 for \$74	\$2.82

through November 23, 1974

Hatten Motor Sales

110 West Lake Shore
842-2727
Culver



Gibson
Model 83-1059

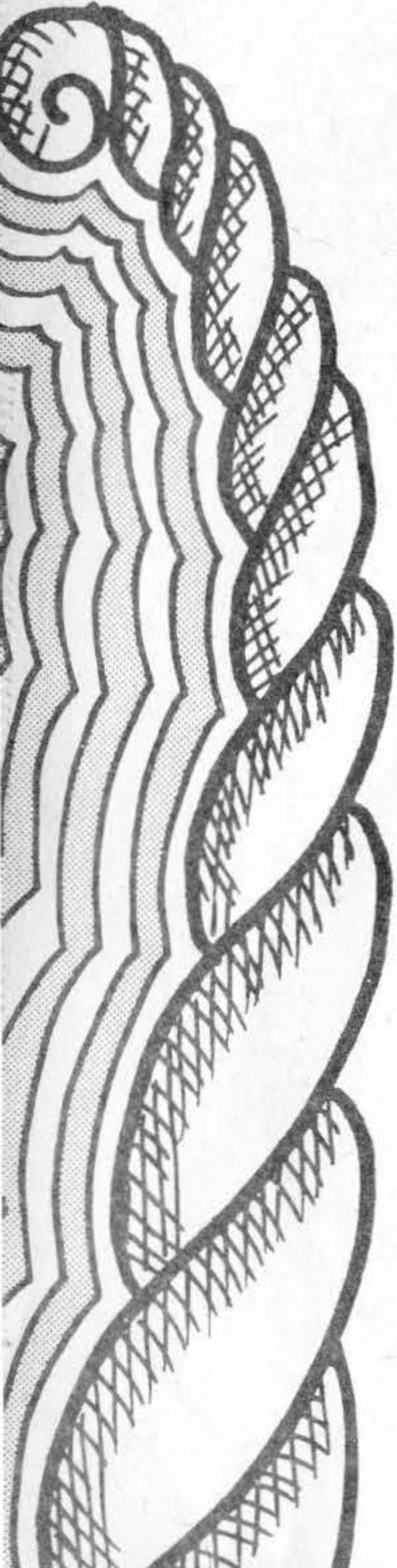
A larger 18.6 cubic foot model with 12.24 cubic feet of fresh food storage, and a 221.0 pound freezer. ABS meat locker, located below ABS crisper, can be kept super cold for safe sever-day meat storage.

Cantilever refrigerator compartment shelves, adjustable rollers and ABS grille base are all standard. Ice Master is optional.

Al's TV & Appliances

115 South Main Street, Culver
Phone 842-2982

"Your Culver Communications Center"



Food: *Without it, people perish*

By THOMAS SCHILTGEN
Nixon Newspapers Writer

"An army travels on its stomach," an old saying goes.

The same is true for the world because without food, people perish.

The problem has become acute enough for world leaders to meet at a United Nations World Food Conference in Rome.

The problem is easy to define: The world is running out of food and an estimated 800 million persons are either starving or malnourished.

Some answers sought at the World Food Conference are:

1. How to increase food production and consumption in the developing countries.
2. How to build a co-ordinated system of emergency food relief aid.
3. How to seek international trade agreements to encourage increased food production in developing nations.

Insight into the growing world food crisis was presented recently at Purdue University when nine faculty members offered their views on increased food production and consumption.

The Purdue professors agreed on several things at their food symposium:

—Food production is increasing to match population growth, but most world farmers do not have sufficient technology to compete in foreign markets and much of the food consumed has minimum nutritional value.

—Most farmers do not have the technology

substantially over the years, he said. In developing nations, the income distribution problems are still there. A small number of people are very well off, but most are impoverished.

T. Kelley White, agricultural economist associate professor, said developing nations in the last 20 years have been able to keep up with growing demand and need for food despite constantly growing populations. In fact, food production has increased at a rate one-half per cent faster than population growth.

Prof. Leonard Breen, sociology and anthropology department head, said longer life spans create larger food demands.

"The world population today is increasing not through the increase in fertility but through the decline in mortality," Breen said.

That higher population produces a major dilemma because more food means better nutrition, higher fertility, greater probability of survival and back to more people demanding more food," he said.

The yearly world population increase is 77 million which equals the combined populations of France, the Netherlands, Sweden and Norway, he said.

Dr. Helen Clark, food and nutrition professor, said the world food supply must increase 30 to 50 per cent during the next decade to feed the growing population. Food quality also must improve because two of every three world children of pre-school age suffer from protein deficiencies. "Will the child reach his potential," she

Liska said losses in some countries from producer to consumer reach 80 per cent due to waste, weather, pests and inadequate transportation.

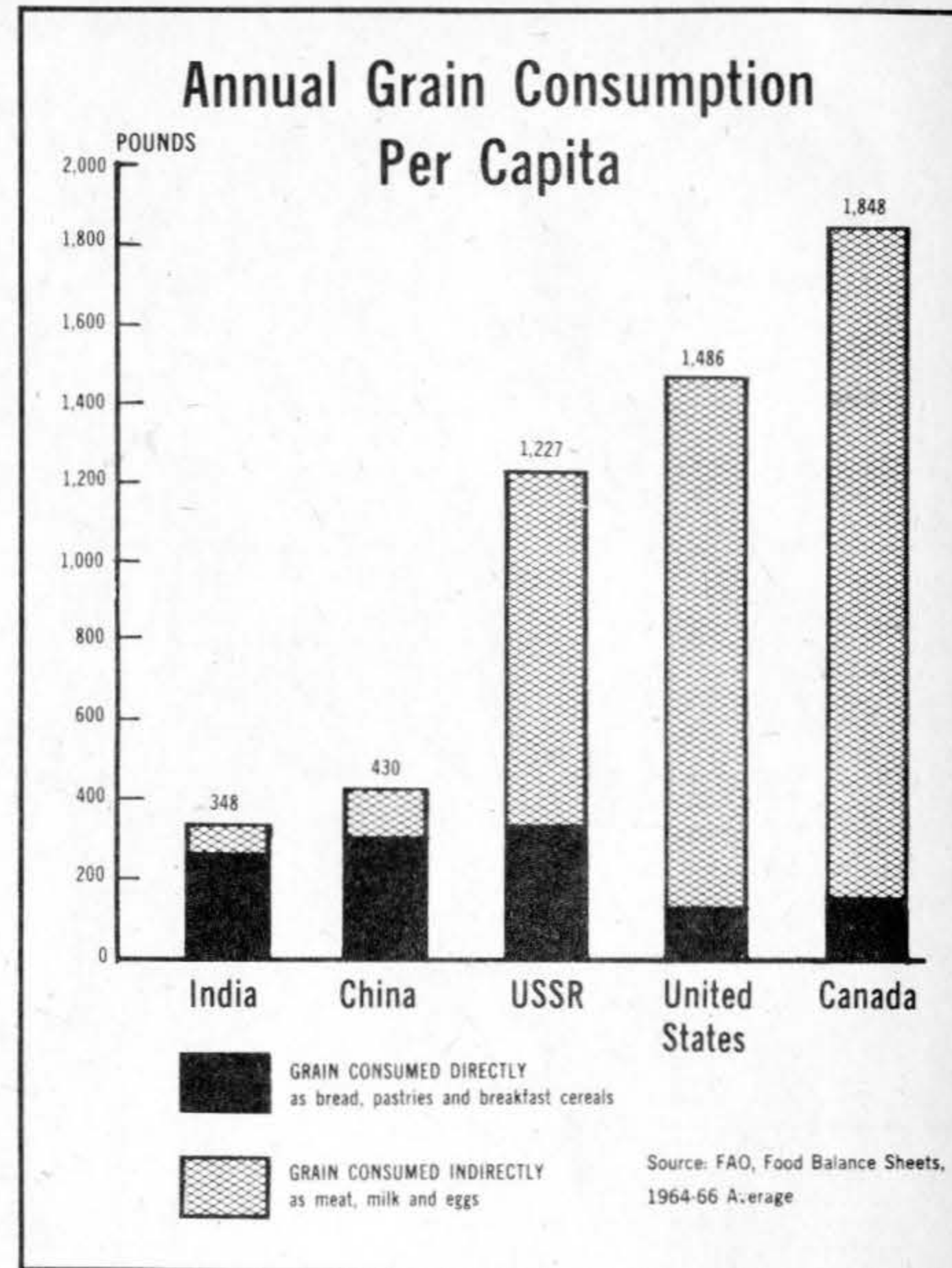
"One of the major problems is to get food in a form consumers will accept. You can develop a new food product, but it will have no effect on the nutritional level of people unless it is in a form they will use," Liska said.

All agreed there are enough world resources to cure the problems. Current technology has provided longer life and more food production. Now steps must be taken to lower the birth rate and to increase food's availability.

"In many countries, the social security system is the oldest child. In these countries, it is commonly believed one must have six or seven children to have an oldest child survive to support the parents in their old ages, Breen said. "You don't need seven anymore. You only need three to have an oldest one survive."

Breen also said contraceptive birth control has not been accepted worldwide. Changing life styles have helped lower birth rates since more women in the labor force — a result of industrialization — mean lower fertility rates.

Axtell said new high-protein grain crop strains can provide minimum human protein requirements with less total crops. Two of those strains — opaque-2 corn and hi-lysine sorghum — were developed by Purdue University researchers. Another strain, kriticale, "may be able to fill very important



"Protein is acute for growth. Worldwide, there is a high mortality rate for pre-school children, the period of the greatest growth," she said. "The smaller the amount of protein foods, the more important are their nutritional quality."

Mrs. Clark said Americans receive 72 per cent of their protein from animal foods, but that amount accounts for just 32 per cent of the energy needed each day. In Mexico, the percentages drop to 25 and 11, and in India to 11 and 6.

Minimum daily requirements for basic protein are commercial rice, 600 grams; hi-protein rice, 480 grams; corn, 300 grams; wheat, 120 grams, and milk, 25 grams.

But while the scientists see population control, expanded food production, education and research primary keys to the world food shortage, they also see obstacles to achieving positive results.

problem is an integral part of the overall economic development program."

— "The world's food needs are largely a function of population. The effective demand for food depends on desires and ability to pay. The demand for food may be quite different than the need."

He added structures should be established outside the agricultural market system to fulfill the need developing countries may have in an emergency.

One structure for just that purpose is a system of grain reserves proposed by the UN Food and Agricultural Organization (FAO).

The purpose of grain reserves is to respond to needs, White said. Reserves must not discourage production in any way.

J. Carroll Bottum, agricultural economics professor emeritus, said the future for farmers in developing countries may depend on the position world leaders take on grain reserves. Any system of grain reserves will be

developing nations meet domestic food demands and compete in world markets. The improved economic condition for such nations then would change sociological values and eventually reduce mushrooming population.

D. Thomas Wood, Purdue's international programs director, said the problem is a matter of "the rate of population growth against the rate of expansion of the world food supply."

But that description, he said, fails to account for questions of sociology, philosophy, economics, religion and politics.

"The food issue is but the tip of the iceberg," he said. "The fundamental issue is human poverty. By the year 2000 or so, the world's population will reach eight billion. One-half to two-thirds of those people will be economic zeroes."

A large number of people still live at sub-standard levels which have not changed

"There's a better food in the world," said Axtell. "The world's population pressures increase, and people, especially in developing countries, will have to rely on cereals as a source of proteins and carbohydrates. As more people rely on poor-quality cereal grains, malnutrition will increase."

Dr. Walter R. Woods, Department of Animal Sciences head, said demand for meats as a protein source increases with economic development.

"As the level of these nations improves, there's a desire for more variety in the diet," he said.

Dr. David A. Landgrebe, electrical engineering professor said American farmers can use satellites and computers to identify land uses, pest and weather dangers and resources beneath the earth.

Dr. Bernard J. Liska, Agricultural Experiment Station associate director and animal science professor, said food supply is affected when the chain between producers, processors, distributors and consumers is disturbed.

foods and 20 per cent each by animal and legume foods, Axtell said. The hi-lysine sorghum strain itself can provide 80 per cent of the protein content of milk and triticale, a wheat-rye hybrid, will grow in countries susceptible to drought or pests.

Continuing agricultural research will help find new high-protein crops and new production methods for each country's situation, he said. The U.S. yearly spends nearly \$93 per farm on agriculture research. Other totals are much less ranging from \$32 in Europe to \$1.50 for South America and 43 cents for parts of South Asia.

American universities can contribute by finding qualified students in developing countries, educating them here and returning them to their countries with knowledge of new technologies and research techniques.

Woods said new animal technology can play a very important role in land utilization. Only 10.6 per cent of world land is usable for crops while 22.4 per cent is used for meadow and pasture.

"Through the animal, large areas of the world not capable of producing a product suitable for man can make a valuable contribution to meeting man's need for food and at the same time provide a high-quality nutritious product," he said.

One development is to recycle waste products through animals, he said, but it is "as yet an unapproved practice" because of harmful bacteria in the process.

Liska said while consumers have not accepted grain-made meat substitutes, grain for meat extenders have found acceptance in "helper-type" dishes.

Mrs. Clark added consumers must be educated on food's nutritional value. Some advertising is not completely true and sometimes is misleading.

The emphasis on protein is the most universal need. Available food amounts are limited with much restricted to poor-quality cereals, she said.

leverage... a food for people...
Nearly all experts say implementation on the grassroots level depends on farm incentives from decision makers. American participation in a world-wide program should be designed not to strip away incentive from farmers nor to leave incentives at the whims of government.

Thomas said American universities cannot be the only source for education in developing nations.

"There's no way these people all can be trained in the American university system. The demand is just too great," he said. "The option is clear. We must help develop in these countries the educational capacity to train people at home. These nations simply must invest to train the people they will need."

Breen said the population dilemma can be solved by a three-pronged attack — contraception, industrial development and economic security.

Some developing nations oppose population-control programs because they feel a decreasing population will mean a political power decline, Breen said. Many nations will not accept population programs because they are proposed by larger, more powerful nations.

White said any world food policy should be determined by five economic realities.

"Price and incentives play an important role in both the production and distribution of food. Farmers all over the world have proven to be rational economic men and respond to incentives. Unless they get the right signals, they don't. Getting the right signals means letting the market be allowed to work."

"The supply of resources available for agricultural production is not restricted at least at any one point in time. It depends very much on what can be paid to bring these resources into production."

"Research is good. It has economic characteristics. Research in agriculture has been proven to have a very high payoff, but due to the nature of research in agriculture, private industry and private capital markets tend to underinvest in agricultural research. Therefore, if necessary, it must be a governmental function."

"We cannot treat the food problems of the world as isolated problems. The food

the second is if it's a substantial amount of food, it lowers the prices of food in that receiving country and discourages production," he said. "So they say, teach a man how to fish instead of giving him the fish and he will have a fish tomorrow. This is the form our aid should take. This is a view very much of the Western countries after long experience. It puts much more emphasis on technical assistance and getting agricultural inputs and getting the pricing system down rather than giving large quantities of food".

Both White and Bottum agreed world nations developing food at a rate to compete with Western nations will have an effect on American farmers. But it will be only on kind, not volume, of exports.

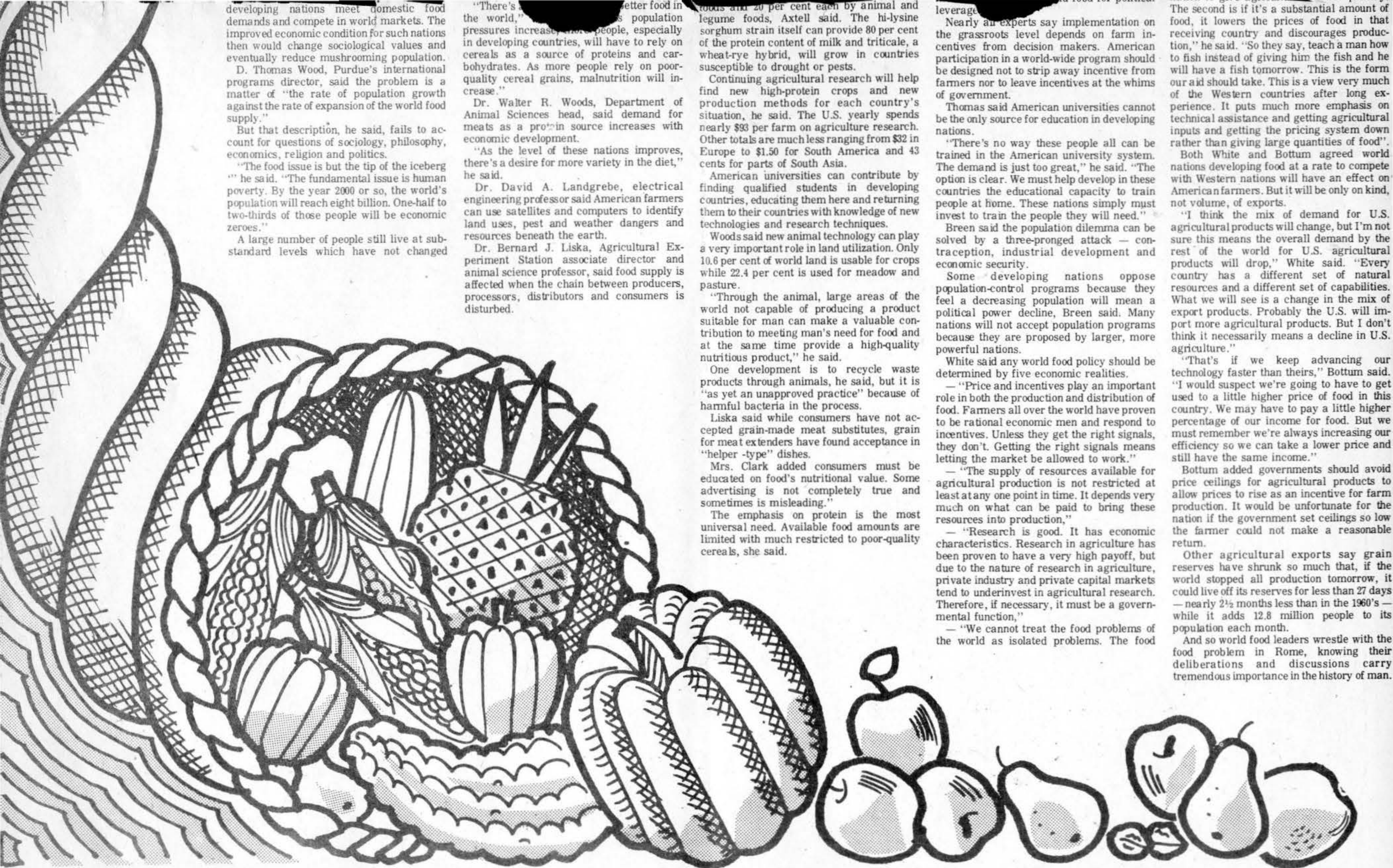
"I think the mix of demand for U.S. agricultural products will change, but I'm not sure this means the overall demand by the rest of the world for U.S. agricultural products will drop," White said. "Every country has a different set of natural resources and a different set of capabilities. What we will see is a change in the mix of export products. Probably the U.S. will import more agricultural products. But I don't think it necessarily means a decline in U.S. agriculture."

"That's if we keep advancing our technology faster than theirs," Bottum said. "I would suspect we're going to have to get used to a little higher price of food in this country. We may have to pay a little higher percentage of our income for food. But we must remember we're always increasing our efficiency so we can take a lower price and still have the same income."

Bottum added governments should avoid price ceilings for agricultural products to allow prices to rise as an incentive for farm production. It would be unfortunate for the nation if the government set ceilings so low the farmer could not make a reasonable return.

Other agricultural experts say grain reserves have shrunk so much that, if the world stopped all production tomorrow, it could live off its reserves for less than 27 days — nearly 2½ months less than in the 1960's — while it adds 12.8 million people to its population each month.

And so world food leaders wrestle with the food problem in Rome, knowing their deliberations and discussions carry tremendous importance in the history of man.



How much longer can world's cornucopia continue to overflow?

HOOK'S SHELVES are packed full of GREAT HOLIDAY VALUES



ARTIS Christmas Cards

A Lovely Way to Wish Happiness. Box of 12 Assorted Cards. Choose from 6 Styles.

49¢



FAMOUS GALLERIES ASSORTMENT

25 Cheerful Cards. Choose from 4 styles. An Enriched Assortment.

159



CARD ASSORTMENT

Choose "Christmas Water Color" or Beautiful "Crystal Parchment" by Hawthorne Summerfield or Artis One Design Cards.

Your Choice **99¢**



FANCY CARDS

20 Grand Award 1-Design Cards or 46 Card Assortment Created by Paramount.

195



BRUT 33

A Great Combo. Splash-on Lotion, 3 1/2-oz. and Deodorant Spray 4-oz.

REG. 2.39 **179**



MEN'S SKIN BRACER

7-oz. Light Bulb Filled with After Shave. A Great Gift Idea for Dad.

REG. 2.19 **159**



JADE EAST

New 4-oz. MUSK OIL Cologne from Jade East.

500



HOLIDAY TREATS GUARANTEED TO PLEASE!

SAVE 20% Choose Milky Way, Snickers or 3 Musketeers, or M&M's Plain, Peanuts, Munch Peanut Brittle or Snick Snack Sticks.

REG. 2 FOR 29¢ **3 FOR 37¢**



NESTLE'S BARS

SAVE 44% Almond, Crunch, Milk Chocolate or Choco'Life in King Size Bars

REG. 79¢ **2 FOR 89¢**



FUN SIZE CANDY BARS

Mars Almond, Snickers Peanut Munch, Milky Way or 3 Musketeers.

10 1/2-oz. Bags. REG. 1.33 **99¢** Your Choice



FACTORY SMOKERS NO. 60

SAVE 70¢ Box of 50 Panetella Cigars.

REG. 2.70 **200**



DESERT FLOWER

Choose New Dusting Powder 5-oz. or Spray Cologne 2-oz.

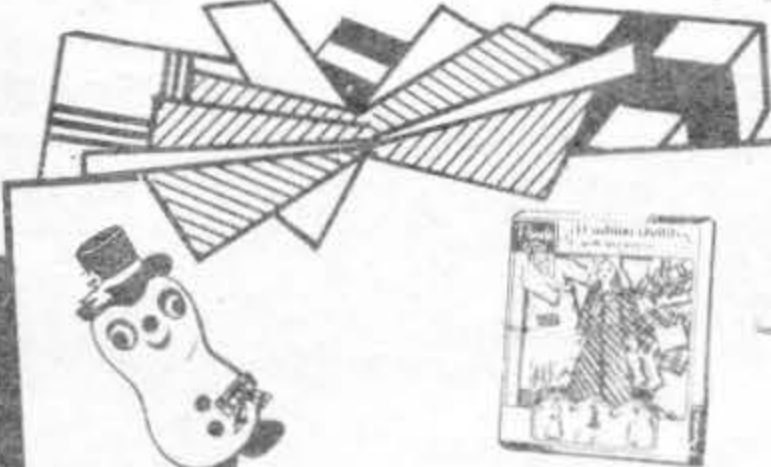
YOUR CHOICE **300**



Maybelline SHADOW TEN EYE SHADOW

6 Fro's and 4 Velvets Small Easy-to-Carry Case.

350



KNIT SANTA OR SNOWMAN

SAVE 34¢ Easily Shaped into Different Poses.

REG. 1.33 **99¢**



PAMELA FASHION DOLL

Complete with Denim Pants, Bridal Gown, 2-Piece Plaid Suit and 40-Pieces of Accessories.

499



KENNER SNOOPY TOOTHBRUSH Or PENCIL SHARPENER

Both Battery Powered! Encourages Early Good Dental Habits or Makes Homework Fun.

YOUR CHOICE **699**



MICKEY MOUSE ELECTRIC TOOTHBRUSH

2 Child-Size Toothbrushes Included. Battery-Powered.

699



Parker Brothers MONOPOLY

World's Most Popular Real Estate Trading Game.

499



PERMOPLAST MODELING CLAY

Complete with Clay and Mold. For Pressing out Three Dimensional Objects.

44¢



CHRISTMAS COOKIE CUTTER

For Fun Cookery! All Metal Molds.

200



SUPER MAX

SAVE 2.00 650 Watts of Power for Quick Drying. Great for Casual Hair Styles. 5 Attachments.

REG. 19.99 **1799**



WATER PIK

SAVE 3.07 Great Way to Deep-Clean Teeth and Gums. Helps Remove Food Build-up.

REG. 19.95 **1688**



SONAC DENTURE CLEANER

SAVE 2.07 The Most Effective Way to Clean Dentures. Energized Bath Unit and Special Solution. Works in 3 Minutes.

REG. 16.95 **1488**



Schick WARM 'N CREAMY

Electric Beauty Dispenser Self-Cleaning. So Easy to Use.

1288



Clairol DRY HAIRSETTER

20 Heat-at-Once Rollers in Two Sizes. A Great Gift for Mom.

1288



Dr. Scholl's FOOT MASSAGER

Provides Choice of Heat or Massage or Both with On-Off Switches.

1698



HY-FRY Automatic COOKER-FRYER

SAVE 1.89 5 1/2-Quart Cooker-Fryer Complete with Fry Basket, Heat-Proof Ovenware Glass Cover.

REG. 11.88 **999**



Oster SUPER PAN

2 1/2-Quart No-stick Serving Pan, Porcelain-clad Surface, Complete with Cook Book. 750 Watts.

2495



Oster AUTOMATIC EGG COOKER

Start Each Day with Perfectly Cooked Eggs. Thermostatically Controlled Heat Makes the Difference.

2295

GIFTS FROM HOOK'S GIVE JOY and GOOD HEALTH, all YEAR LONG!

Hook's

DEPENDABLE DRUG STORES



HURRY CHRISTMAS SPECIALS Good thru November 24, 1974

HOOK'S Is Stocked Full Of Savings On HEALTH and BEAUTY AIDS, too!

Caring for you & your family since 1900.



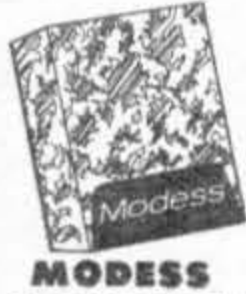
CONTACT COLD CAPSULES
SAVE 40c
Give Your Cold to Contact!
10 Timed-action Capsules.
REG. 1.39 **99¢**



VISINE EYE DROPS
SAVE 50c
Gets the Red Out!
Soothes Irritation, Clear,
Non-Staining. 1.5cc
REG. 1.49 **99¢**



DESITIN SKIN CARE
SAVE 34%
6-oz. Medicated Hand Lotion.
Helps Heal and Protect Dry,
Chapped Skin
REG. 89c **59¢**



MODESS SANITARY NAPKINS
SAVE 25%
Box of 12. Your Choice of
Regular, Super, or
Teenage Sizes
REG. 63c **47¢**



LAVORIS MOUTHWASH AND GARGLE
SAVE 21c
More Dentists Use Refreshing
Lavoris. 14-oz.
REG. 1.10 **89¢**



7-UP CANS
SAVE 26c
Stock-up for the Holidays.
Great Thirst Quencher
REG. 1.45
6-PACK **119**



FINAL NET
SAVE 70c
New Economy 12-oz. Size
Holds 3 Times Longer Than
the Leading Hair Spray
REG. 2.39 **169**

Check HOOK'S
LOW PRICES
Compare And
SAVE!



HOOK'S COUGH SYRUP
6-oz. Extra Strength
Syrup
149

COMPARE and SAVE
VICKS FORMULA 44
6-oz. extra-strength cough
syrup.
169



HOOK'S BABY SHAMPOO
No-Tears Formula, 16-oz.
109

COMPARE and SAVE
JOHNSON BABY SHAMPOO
No-tears
Formula
16-oz.
219



HOOK'S ASPIRIN
100 Pain Relieving Tablets
49¢

COMPARE and SAVE
BAYER ASPIRIN
100 Pain Relieving Tablets
89¢



LIQUIPRIN
Easy, Safe
Liquid Pain Reliever
for Children
Without Aspirin.
119



BEN-GAY
Greaseless—Stainless
Fast Relief From Aches
and Pains. 1 1/4-oz.
109



GELUSIL
100 Antacid Tablets
For Relief of Heart Burn,
Indigestion and Upset
Stomach
179



ASPERGUM
Choose Cherry or Orange
Flavored. For Fast Tempora-
ry Relief of Minor Sore
Throat Pain
55¢



DIUREX PILLS
A Gentle Diuretic. Helps
Reduce Excess Body water.
42 Pills
300



THINZ-SPAN REDUCING PLAN
Helps Curb Appetite With
Timed Action. 14 Tablets
300



PARTY TUMBLERS
In 9-oz. Lowball or
10-oz. Highball 12
Crystal Clear Plastic
Glasses.
Your Choice
69¢

LOOK TO HOOK'S FOR EVERYDAY LOW PRICES



METAMUCIL
14-oz. Powder for
Constipation.
212



MAALOX
Fast relief from
acid stomach. 12-oz.
110



MI-CEBRIN T
Vitamin-
Mineral
supplements.
100 Tablets.
510

LILLY INSULIN
Regular or modified
types only

U40, 10cc 98c
U80, 10cc 1.89
U100, 10cc 2.36

HOOK'S PRESCRIPTION SERVICE
Still Your Biggest Value!

QUALITY PRESCRIPTION
SERVICE IS STILL HOOK'S BIGGEST VALUE

When your family needs special health care, bring your prescription to us. After all, folks in Indiana have been doing just that for generations. Because, at Hook's Dependable Drugstores, we still give the same hometown prescription care that's been our trademark since 1900.

Hook's Special COUPON
LIMIT 1
Offer Expires November 24, 1975

GILLETTE RIGHT GUARD
Choose 5-oz. Regular,
Powder or Natural, For Dry
Comfort Protection
REG. 1.09 **77¢**

Hook's Special COUPON
LIMIT 1
Offer Expires November 24, 1975

BAUER and BLACK ELASTIC PANTY HOSE
Support Legs All Day in
Comfort. Assorted Sizes
REG. 10.95 **895**

Hook's Special COUPON
LIMIT 1
Offer Expires November 24, 1975

GLORY RUG CLEANER
24-oz. Easy-To-Use
Cleaner Gets Out
Ground-in Dirt. Foam Spray
REG. 1.98 **127**



Turkey Roundups Change Holiday Pace



All the holidays fall in a row! For months, emotions are a churn with the excitement of entertaining. Take time out from the bustle for Turkey-Corn Bread Roundups. Set the mood of the wide open western spaces — and use up leftover turkey in the meanwhile. Finely chopped onion and green peas accent the corn bread, speedily made from a mix. Chunks of turkey, swimming in a catsup and barbecue sauce, are spooned atop. Serve Turkey-Corn Bread Roundups. Do yourself and your budget a favor!

TURKEY-CORN BREAD ROUNDUPS

Makes 6 servings

Corn Bread:

- One 12-oz. pkg. (2 cups) Flako Corn Muffin Mix
- $\frac{2}{3}$ cup milk
- 1 egg
- 1 cup canned or cooked frozen green peas, drained
- $\frac{1}{2}$ cup finely-chopped onion

Sauce:

- 1 cup all-purpose barbecue sauce
- 1 cup catsup
- $2\frac{1}{2}$ cups chopped cooked turkey

Heat oven to hot (400°F.). Empty contents of package into bowl. Add milk and egg, stirring only until ingredients are moistened. Stir in peas and onion. Pour into well-greased 9-inch square baking pan. Bake in preheated oven (400°F.) about 20 minutes or until golden brown.

For sauce, combine all ingredients in medium-sized saucepan; heat thoroughly. Cut corn bread into 6 pieces and serve hot with sauce.

QUIK-FIX® DENTURE REPAIR KIT



- Repair broken dentures
- Easy to use — no special tools
- Money back guarantee



GET YOUR \$ WORTH

BY SALLY AND JIM ADAMS

CUT YOUR PHONE BILLS -- II

Long-distance phoning can put a real dent in your budget. Here's what you should know to cut long-distance costs.

Direct distance dialing saves. Dial yourself whenever you can; asking operator assistance costs much more.

Long-distance person-to-person calls cost up to three times more than a self-made call. Avoid making them by advising people via postcard when to expect the call.

Time your long-distance calls or they'll go on and on. Many thrifty people keep an egg timer near the phone.

Keep a record of your long-distance calls — the numbers called, the date, hour and length of each call. Then, if your bill shows an unfamiliar number charged against you, you can alert your phone company service representative and a correction will be made.

You should know the special direct dialing rates for interstate calls; there's a world of difference. Here are the four different rate periods for calls you make within the continental United States (excluding Hawaii and Alaska). The costs are for the New York area; prices in your area may be different, but you can see how much you can save by choosing the right time.

1. The Cheapest — A long-distance call up to a minute in length between 11 p.m. and 8 a.m. This is the standard night rate, and it's a bargain. It's 35 cents (New York area) for that first minute. All following calls are based on a three-minute minimum.

2. Next Cheapest — The weekend call. Between 8 a.m. and 11 p.m. Saturday, and between 8 a.m. and 5 p.m. Sunday. Seventy cents for the first three minutes.

3. Sunday, 5 p.m. to 11 p.m. goes on the cheap evening rate. It's 85 cents for the first three minutes.

4. Most Expensive — The day rate, from 8 a.m. to 5 p.m. weekdays it's \$1.35 for the first three minutes. As you can see, during the day, except weekends, is no time for an extended long-distance conversation.

((c) 1974, McNaught Syndicate, Inc.)

SOUTH BEND ART CENTER

Gary Herbert made an unorthodox entrance into the world of sculpture. It is not often that a Harvard educated attorney with a successful practice rejects material success for a philosophical and naturalistic approach to life.

The theme of Herbert's exhibit is the human spirit and the broad expanse of nature. The Indian solitude and the freedom and ruggedness of the outdoors have filled him of this excitement. His love of western life and lore, his back-packing trips through the Rocky Mountains, Canada and the Yukon are all part of the stories he tells through his art.

The exhibit is open in the local artists gallery at the South Bend Art Center.

NATIONAL BIBLE WEEK

Nov. 24-30

Many cities will be celebrating this week in various ways. Look for the Bible display at the Christian Science Reading Room, 428 S. Michigan St., Plymouth. It is open from 2-5 p.m. on Wednesdays and Saturdays.

The Annual Thanksgiving service will be at 10:30 a.m. on Thanksgiving day at the above address. The meeting will include the President's proclamation that people should assemble for the giving of thanks. All are welcome.

GRAND OPENING

S & S

Florist

November 22 through 30

GRAND OPENING SPECIALS

roses.....7.00 per dozen

mum plants.....5.00 each

Thanksgiving centerpieces and arrangements now specially priced, too

1010 South Main
842-3737



PUBLIC SALE

THE FOLLOWING WILL BE SOLD AT PUBLIC AUCTION
LOCATED AT 303 MADISON STREET, CULVER, INDIANA
SATURDAY, NOV. 20, 1974
12 NOON

HOUSEHOLD:

3 piece sectional sofa, occasional chairs, rocking chairs, 9x12 oval rug, 12x15 braided rug, record cabinet, hassock, step-table, 2 book shelves, dinette table and 4 chairs, wrought iron table and 4 chairs, wrought desk and chair, coffee table, dressing table, lamps, card table, t.v. trays, magazine rack, metal kitchen cart, 3 metal cabinets, 2 metal wardrobes, folding cot, walnut cedar chest, wire basket, humidifier, bulletin board, radio, luggage rack, round mirror, Clairol makeup mirror, sewing board, ironing board, books, ceramic pieces, wood storage box, wood burning stove, 37 wool rug squares, 640 asphalt tiles, stack of walnut boards, sea shell set, glass jars, assortment of glassware and dishes—some old, ladies golf clubs, lawn mower, work bench with shelves, 2 cross cut saws, electrical hedge trimmers, 5 hp outboard motor.

ANTIQUES:

Cherry wash stand, walnut bedside or hall tree, Boston-type rocker, carved base mahogany octagonal table, mahogany 4-poster bed and dresser, old shaving stand with mirror, corner chair, walnut occasional chair, ladies writing table, blanket chest, picture frames, copper box, 3 glass lightening rods, school desk, 2 kindergarten desk tops, box of wooden toy blocks, car coach lamp, aladdin lamp.

TERMS: Cash

Not responsible for accidents

Owners: Jim and Jeanne Piersol

AUCTIONEER: PAUL J. BEAVER

Culver, Indiana
842-2229

Sew up a holiday outfit

choose from shimmering metallic weaves of white, red, or black with silver or gold highlights.....soft, airy fabrics perfect for holiday pyjama pantsuits and glittery trims for tops and skirts

priced from 5.00 yd.

THE Kelly SHOP
Culver

THE CITIZEN BILLBOARD

Classified Advertising Rates Phone 842-2297

Up to 25 words, \$1.00	2 Weeks \$1.80	3 Weeks \$2.40	4 Weeks \$2.80
Up to 50 words, \$2.00	2 Weeks \$3.60	3 Weeks \$4.80	4 Weeks \$5.60

Cash In Advance For Classifieds, Please.

PERSONALS

CARD OF THANKS

I would like to express my sincere thanks to all my friends in Plymouth and Culver, my doctors, all the nurses and aides in both Parkview Hospital and Pilgrim Manor for the many kind things they did for me in my four months stay.

Mrs. Joyce Anderlohr

CARD OF THANKS

We would like to sincerely thank all of our friends and neighbors for the kind expressions of sympathy during our recent loss.

The Thomas K. Walker family

LOST—BOSTON TERRIER, female, answers to "Tiny." Please call 842-2467.

RENT

FOR RENT—Clean, nicely furnished three room apartments. Also sleeping rooms. Phone 842-3442. TFN

UNFURNISHED—2 bedroom modern apartment for rent. Call 842-2700, 8043

SALE

KEYBOARD CLASSES to begin for children 5-7½ years. No piano required. Class prepares child for formal piano lessons. Call 842-3405 to register.

Thomas Real Estate

Gerald Thomas Broker

Virginia Thomas Salesman

Marjorie Schmoll Salesman (842-2132)

Before Deciding, talk with us.
157 North Terrace
Culver 842-2311

FOR SALE: 1968 Chevrolet Impala convertible. Mechanically good, poor body, tires okay, new exhaust and shocks, has trailer hitch, needs battery. Asking \$300. Anthony Bult—842-2425.

RABBITS for sale. Call 842-2933.

SAW SHARPENING—Carbide, circular and hand saws. Router bits. One mile east of Memorial Forest on West 14 Road. Ray Huffer. 8012TFN

If It's
Real Estate
See
C.W. Epley
REALTOR

450 Forest Place, Culver
Phone 842-2061

Sales Appraisals
TFN

HUDON TYPEWRITER SERVICE
103 West LaPorte Street, Plymouth.
Sales—Service—Rentals. Typewriters and Adding Machines. Repairs on all makes. Royal Portable dealer. Phone 936-2728. TFN

ALL ADULTS, young or old, can learn to read and play music. If interested, call Susan Hudson, 842-3405 and register for beginning adult piano classes.

Powers Realty



Follow The Key!

Across from Lake Maxinkuckee—This delightful retreat near the public access, is a 2 or 3 bedroom home with new filter bed, new roof and eaves, new wiring, winterized...and much more. It's yours for only \$12,900.

Gracious classic—Over 2400 square feet on main two floors. L-shaped porch, full basement with 9 foot ceilings, attic, 5 or 6 bedrooms, kitchen, dining room, living room, new wood-look aluminum siding, new roof, completely re-wired, situated on two full acres with fish pond and much more. Just 1½ miles from Lake Maxinkuckee. Better hurry!

Plus many other town, country and lake properties. Serving you full time. Phone 842-2710



WRECKING OLD BUILDINGS—Farm, Home and Commercial. 25 years experience, free estimates, fully insured. Robert Cloud, 832-4675. 19TF

TIMBER WANTED—We buy logs and standing timber. No less than 5 acres. We do not buy fence row trees or yard trees. Precision Pallets and Skids, Inc., Walkerton, Ind. Phone 586-3068; nights 586-3052 or 586-2688. Dc31

**Sell It Fast
With A Citizen
Want Ad**

FOR SALE OR RENT—Mobile Homes 2 & 3 bedrooms furnished ready to move in. Barns New Park. Phone 896-2453. Gayble Mobil Home Sales, 107 East Weniger St., North Judson.

FELKE FLORIST

Plymouth

Call Us For

Flowers For Any Occasion.

Daily Deliveries To Culver

We Are As Close As Your Phone

Call 936-3165 TFN

CONSIDERING a new home?—Think of Aaron Homes—call (219) 946-4064 for appointment to see house plans.

EXPERIENCED house keeper wants live-in house keeping job. Call 842-2389. Can furnish reference.

USE
HOST

Dry Clean Carpet and use instantly

Please
phone for information

Boetsma Home Furnishings, Inc.
Culver 842-2626

RUMMAGE SALE—sponsored by the Ladies Auxillary of the Eagles Lodge. Saturday and Sunday, Nov. 23 and 24, 9 a.m. to 5 p.m. Eagles Lodge, St. Road 17, Culver.

COMPLETE SUPPLIES FOR MODEL AIRPLANES
Rubberband-R/C-Gliders
U/C-Bulk Fuel
GEORGE'S DRYLAND MARINA AND MODEL AIRPLANE SHOP
ALSO COMPLETE TUNE & REPAIRS ON OUTBOARDS-LAWN MOWERS (ANY MAKE)-SMALL ENGINES-CHAIN SAWS-BOATS
BALANCE & SHARPEN BLADES
1 Mile South of Horse Palace on 700E

SPINET CONSOLE PIANO

WANTED: Responsible party to purchase spinet piano on low monthly payments. Can be seen locally. Write Representative: Ken Bayless, P.O. Box 276, Shelbyville, Indiana 46176

Offered By THOMAS REAL ESTATE

Just offered. Three bedroom home on two acres. Some repairs are needed, but the price is right.

Just offered. Lake Maxinkuckee. A home that can be bought on a low-interest-rate land contract.

Just offered. Two bedroom home on more than 1½ acres. Total electric and only 5 years old.

Just offered. Two bedroom home in Culver! Fine location and very good condition. Under \$18,000.

Call us for these and other fine homes for sale in the Culver area.

THOMAS REAL ESTATE
Culver 842-2311

LEGAL NOTICE

NOTICE OF PUBLIC HEARING

Notice is hereby given that the Culver Plan Commission will hold a public hearing at the Town Hall on November 26, 1974, at 7:30 P.M. for the purpose of hearing a proposed plat to be known as Allen's Addition. Land presently owned and developed by Sam H. and Bill Allen.

NOTICE TO TAXPAYERS OF ADDITIONAL APPROPRIATIONS

Notice is hereby given the taxpayers of Union Township, Marshall County, Indiana, that the Advisory Board of said Township at Culver Town Building at 7:30 o'clock P.M., on the 2nd day of December, 1974, will consider the following additional appropriations which said officers consider necessary to meet the extraordinary emergency existing at this time.

POOR RELIEF FUND	
Direct Relief	\$500.00
TOWNSHIP FUND	
Advertising	80.00

Taxpayers appearing at such meeting shall have a right to be heard thereon. The additional appropriations as finally made will be automatically referred to the State Board of Tax Commissioners, which Board will hold a further hearing withing fifteen (15) days at the county auditor's office of Marshall County, Indiana, or at such other place as may be designated. At such hearing taxpayers objecting to any of such additional appropriations may be heard and interested taxpayers may inquire of the county auditor when and where such hearing will be held.

Ronald J. Gleason
Township Trustee

SLAPSTIX

**IT'S NO LONGER
A SIN TO BE
RICH,
IT'S A Miracle**

© 1974 McNaught Syndicate Inc



PROFESSIONAL DIRECTORY

DENTIST

Thomas M. Pugh, R.P.H., D.D.S.
Office Hours by Appointment
1001 Lake Shore Drive
Phone 842-3465

OPTOMETRIST

Dr. F. L. Babcock

Office Hours by Appointment
Tuesday, Thursday, Friday, 9 to 5
Wednesday and Saturday 9 to 12
Closed Monday
Phone 842-3372

**HIGH QUALITY
PRESCRIPTION
DRUGS**
at low prices!
Fast, courteous service

Mr. T's Rexall Drugs
Culver, Indiana
24 Hour Phone 842-2700

YOUR **Rexall** PHARMACY

**CLINICS
CULVER CLINIC**
820 Academy Road
Phone 842-3351

Jack M. Miller, D.O.
John E. Mann, D.O.
G. W. Stevenson, D.O.
General Family Practice
Office Hours By Appointment
Phone 842-3351

PHYSICIAN

Donald J. Faulkner, M.D.
114 Lake Shore Drive
842-3387
Office Hours By Appointment

PHYSICIAN

LAKE SHORE CLINIC
921 Lake Shore Drive
Phone 842-3327

Michael F. Deery, M.D.

PHYSICIAN

General Medicine and Obstetrics
Office Hours by Appointment
M. GEORGE ROSERO M.D.
17 East Main Street, Kewanna
Office Hours by Appointment
Phone: Office 653-2383
If no answer phone 653-2565

GRAFFITI

**YOU CAN
ATTAIN
GREAT
HEIGHTS
BY STAYING
ON THE
LEVEL**

**...It Must Be
THE LAKE
WATER**
By Bob Kyle

LAST WEEK Lake Water received good news. After a five-year bout with pneumonia, blood poisoning, five operations and 30 cobalt treatments, he has emerged as good as new and feels 20 years younger.

To Drs. Bernard I. Levatin and our own Michael Deery go much credit. Also to the staff of St. Joseph's in South Bend and Dr. Lloyd C. France at Parkview Hospital in Plymouth. As Dale Burgess of the Associated Press in Indianapolis described it, I was saved from the Batesville box. With the help of the competent Bonine Ambulance Service and my darling wife, who made more than 100 trips in the worst kind of weather to transport me back and forth, I owe everything. And to Anheuser-Busch to supply the live yeast enzymes that made me well when 11 antibiotics failed.

**CMA fencers
take gold medals
at Bloomington**

Thirty members of the Culver Military Academy fencing squad converged on the Indiana University campus in Bloomington last Saturday and returned with six of the 12 medals awarded.

Capt. Melville K. Short, varsity fencing coach, made the trip with the squad that participated in an Amateur Fencers League of America tournament. Fifteen members of the CMA squad competed.

In foil, CMA took second and third place with John Marks and Stewart Ellenberg behind IU's Schamm. In sabre, John Ballard of CMA was first, followed by Krammer of Indianapolis and David Anderson of CMA.

Ellenberg of Culver defeated Cullen of Bloomington who trained last summer with the US Pentathlon Squad at Ft. Sam Houston, Tex., 5-3 to take the gold medal in epee. John Rodda, of CMA finished third in the competition.

CMA's regular season starts in January with the quadrangular meet with IU, Purdue, Johns Hopkins University in Bloomington.



Rubber plants are not particular about their soil and any common potting mixture is likely to suit them just fine. They do like a good dose of indirect sunlight, however, and a warm temperature, and plenty of moisture in the air. The ficus hates drafts and, if it suddenly loses all its leaves, it could well be that it has been inadvertently chilled. Be sure to keep it warm. Also, rubber plants are rather insecure and don't like to be moved about too often. Find a good place for yours and keep it there.
(c) 1974, McNaught Synd.)

We even had a little reception by the nurses in St. Joseph's when I left there—for the last time. I hope.

A \$100 CONTRIBUTION to charity (Osborn Center) in these most popular weeks of the year never costs you \$100 out-of-pocket because the Internal Revenue Service shares the burden of every contribution.

Even if your 1974 taxable income is only \$6,000, the contribution will cost you, a married couple filing a joint return, only \$81 after taxes. And the out-of-pocket cost goes down until at the \$150 a year level, the after-tax cost of a \$100 contribution is a mere \$34.

The first basic tax strategy is to act now—before the year ends—to make your 1974 contributions cost as little as possible after taxes. Pledge, pay and deduct the contribution from '74's income.

If you do not pay your pledge until Jan. 2, you will not get any benefit from the contribution until you file your 1975 declaration in the spring of 1976.

And don't underestimate the extent to which the federal government helps bear the cost.

This is what attorneys for the Osborn Center are trying to work out. Lake Water, who spent many hours helping work this out in Indianapolis last week, has been assured that this deduction can be worked out and has retained a tax lawyer of the firm of John T. and James E. Rocab and Associates, longtime Lake Maxinkuckee residents, to handle this matter of concern to contributors of Osborn Center. Next week we will give

ARMY COMMENDATION

Maj. T. Joseph Clark III, USA senior Army instructor at Culver Military Academy, was awarded the Army Commendation Medal at a special Culver Garrison Parade this fall. Superintendent Ben A. Barone presented the medal in behalf of the Secretary of the Army.

Clark, who was assigned to Culver in July 1973, is a native of Memphis, Tenn., and a graduate of Spring Hill College in Alabama.

EL DANCHO
Theatre
CULVER

Friday, Saturday and Sunday

Return engagement of
AMERICAN GRAFFITI

7:15 p.m. and 9:05 p.m.
Rated PG

BEAN SUPPER

Maxinkuckee I.O.O.F. 373

Thurs. Nov. 21
6-8 p.m.

FREE

for members
and their guests

at the
Lodge Hall

more information. This material is being supplied by the Research Institute of America.

BETSY HALLIDAY in last Sunday's Indianapolis Star society column said, "The Kyles of Culver have a new 'baby' in the Osborn Center and hotel being converted to an elderly residence.

recreation and meeting place for various clubs. But it also said that Al Jolson stayed there when it was a hotel and his sons were at CMA. It happened to be Will Rogers.

A man asked his wife what she wanted for her birthday and she answered with: "A kiss dear,

that is something I won't have to dust."

How many times do we live our days as we hope, but through Your love, O Lord, we can use disappointments as ways of growing stronger.

**Adorn
your Thanksgiving table
with festive centerpieces**

We have many tastefully beautiful center-pieces ready-to-use, or create your own with our fall-colored candles, woodblock candlebases and lush green foliage.

And our Creative Glassware Collection by Corning is perfect for holiday casseroles, desserts....everything!

The Little Gallery

**Your old pickup:
it's worth more than you
might expect toward**

Ford F-100 Ford F-150 Ford SuperCab

a new Ford pickup!

Trade-in values are way up. Your old pickup, no matter what make or model, is probably worth more in trade today than it was just eight or ten months ago. Which makes the cash difference on a deal a lot less than you might expect.

Only one way to find out: stop in. Look over our new Ford SuperCab, the pickup with room enough for a family of six. See the new F-150—one pickup that runs on any kind of gas, and carries a ton of people and cargo to boot.

Then get the trade-in deal we can offer right now. It's a deal you just won't be able to walk away from.

See the dealer who makes the difference.

VAN HORN FORD-MERCURY
415 Lakeshore Drive Phone 842-2791
CULVER, INDIANA 46511